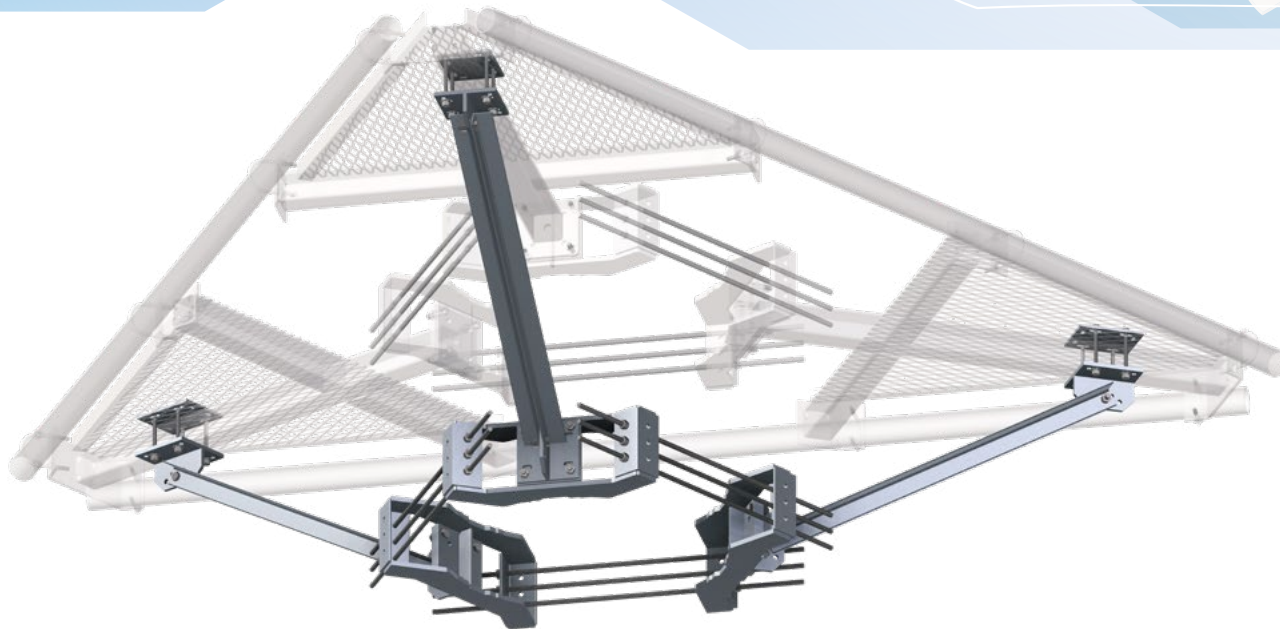


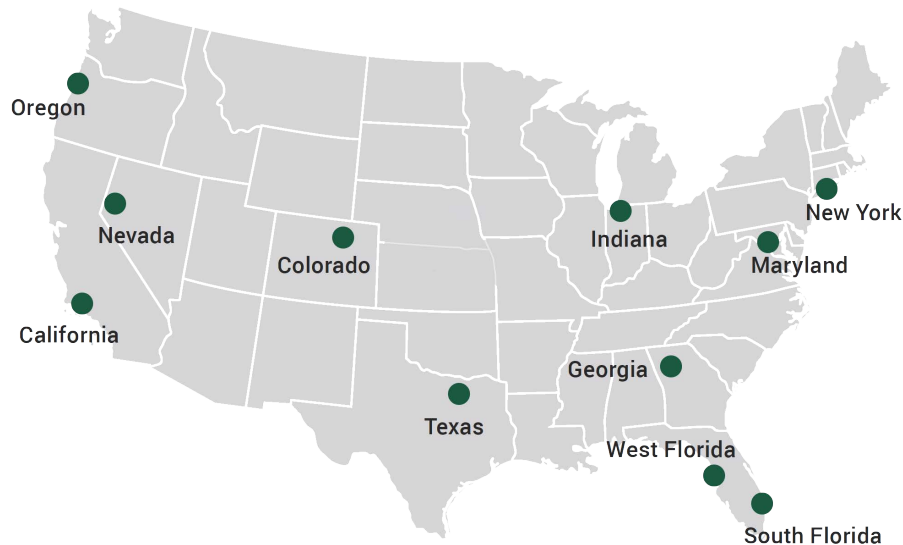
# REINFORCEMENT KITS



[SITEPRO1.COM](http://SITEPRO1.COM)

**SITE  
PRO** **1**

A **valmont**  COMPANY



## NEW YORK

15 Oser Ave  
Hauppauge, NY 11788  
Ph: 1-888-438-7761

## GEORGIA

4100 Westpark Dr SW, Ste C  
Atlanta, GA 30336  
Ph: 1-866-901-0603

## CALIFORNIA

12661 Corral Pl  
Santa Fe Springs, CA 90670  
Ph: 1-888-776-1937

## INDIANA

1545 Pidco Dr  
Plymouth, IN 46563  
Ph: 1-888-753-7446

## WEST FLORIDA

5122 Joanne Kearney Blvd  
Tampa, FL 33619  
Ph: 1-844-278-6371

## MARYLAND

8200 Stayton Drive, Ste 700.  
Jessup, MD 20794  
Ph: 1-888-438-7761

## OREGON

3573 25th St SE  
Salem, OR 97302  
Ph: 1-888-880-9191

## TEXAS

2045 Westgate Dr, Ste 110  
Carrollton, TX 75006  
Ph: 1-888-809-5151

## SOUTH FLORIDA

33 Commerce Way  
Jupiter, FL 33458  
Ph: 1-866-781-1300

## NEVADA

960 E Greg St. Building 6.  
Sparks, NV 89431  
Ph: 1-888-438-7761

## COLORADO

14200 E 35th Pl Ste 105  
Aurora, CO 80011  
Ph: 1-720-823-7661

## The Industry Leader that's here for You

With 11 warehouses around the United States, we are the premiere provider of wireless site components and safety products. We're dedicated to innovation and have served at the forefront of the industry providing our customers with flawlessly engineered, innovative solutions.

We understand the industry and the nature of the work. We provide not only high quality products at exceptionally rapid speeds, but you have in us a partner to grow with. You have our knowledge, our expertise, and the personal touch we provide for every customer and order.

We are here for you.

**Shop at SitePro1.com**

## Valmont Telecom Locations

### INDIANA

Plymouth, IN

### OREGON

Salem, OR

### NEBRASKA

Valley, NE

### TEXAS

Brenham, TX

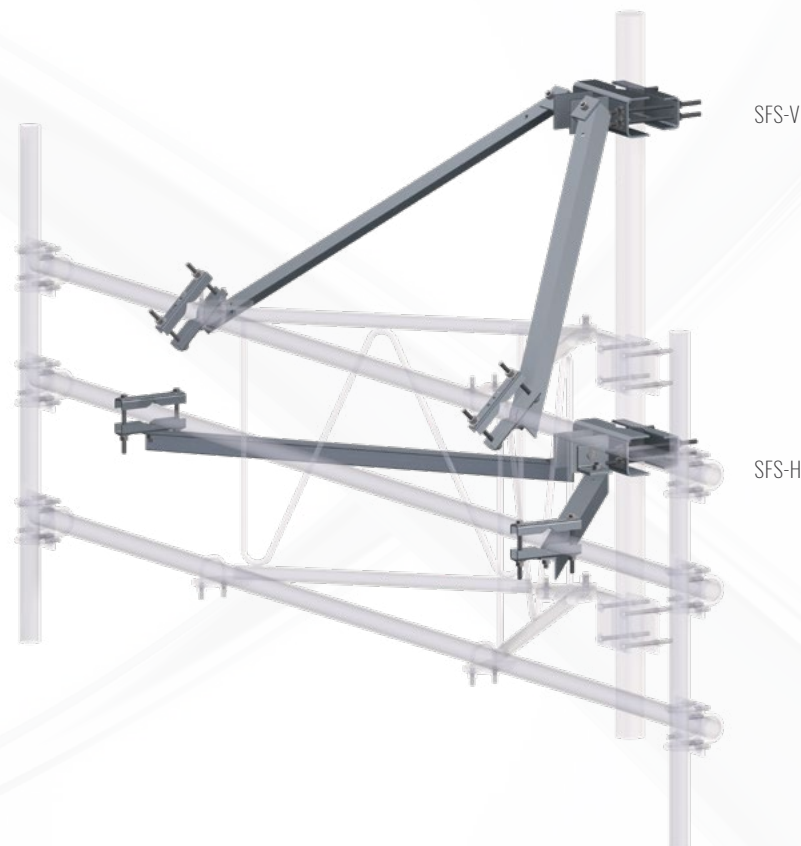
### ARIZONA

Tucson, AZ

# SECTOR FRAME REINFORCEMENT – TOWER

## HORIZONTAL AND VERTICAL REINFORCEMENT KITS

- Universal single-level Reinforcement Kits provide additional horizontal or vertical support to existing Sector Frames
- For SFS-H and SFS-H-L, based on design criteria noted in capacity letter, the maximum additional normal load capacity gained is 1,050 lb, the maximum additional tangential load capacity gained is 300 lb, and the maximum additional dead load capacity is 0 lb
- For SFS-V and SFS-V-L, based on design criteria noted in capacity letter, the maximum additional normal load capacity gained is 0 lb, the maximum additional tangential load capacity gained is 300 lb, and the maximum additional dead load capacity is 1,500 lb
- Universal mounting; round legs from 1" to 8", 60° angle legs from 1-1/2" to 8", and 90° angles 1-1/2" to 6"
- Large Leg Adapter Kit available for round legs up to 12-3/4", 60° angle legs up to 12", and 90° angle legs up to 8-1/2"
- Angle brace size is 2-1/2" x 2-1/2" x 3/16"
- Contact us for detailed load and engineering data



Part#	Stabilizer	Application	Weight
SFS-H	Horizontal	24" to 36" Standoff	66 lb
SFS-H-L	Horizontal (Long)	36" to 48" Standoff	77 lb
SFS-V	Vertical	24" to 36" Standoff	66 lb
SFS-V-L	Vertical (Long)	36" to 48" Standoff	77 lb
SFS-NA	Attachment hardware only, no angles (arms) included		38 lb
TAM-LL	Large Leg Adapter Kit		39 lb

# SECTOR FRAME REINFORCEMENT – TOWER

## DUAL-LEVEL REINFORCEMENT KITS

- Universal design provides extra capacity to existing Sector Frames for mounting RRU's
- Provide both vertical and horizontal reinforcement
- The maximum additional normal load capacity gained is 1,200 lb, the maximum additional tangential load capacity gained is 400 lb, and the maximum additional dead load capacity gained is 1,500 lb
- Universal mounting; round legs from 1" to 8", 60° angle legs from 1-1/2" to 8", and 90° angle legs from 1-1/2" to 6"
- Large-Leg Adapter Kit available for round legs up to 12-3/4", 60° angle legs up to 12", and 90° angles up to 8-1/2"
- Angle brace size is 2-1/2" x 2-1/2" x 3-16"
- Contact us for detailed load and engineering data



SFR-K

Part#	Application	Sector Quantity	Weight
SFR-K	24" to 36" Standoff	1	132 lb
SFR-K-L	36" to 48" Standoff	1	154 lb
SFR-K-3	24" to 36" Standoff	3	396 lb
SFR-K-L-3	36" to 48" Standoff	3	462 lb
TAM-LL	Large Leg Adapter Kit		39 lb

# SECTOR FRAME REINFORCEMENT – TOWER

## SECTOR FRAME STIFF ARM KITS

- STK-U is a 2-3/8" x 12'-6" Stiff Arm
  - Sector Frame attachment hardware fits 2-3/8" Pipe
  - Leg bracket fits round legs from 1-1/2" to 6" OD, 60° angle legs up to 6", and 90° angle legs up to 4"
- SPTB is a 2-3/8" x 10'-6" Stiff Arm
  - Universal Sector Frame attachment hardware fits 1-1/2" to 5" OD
  - Leg bracket fits round legs from 1-1/2" to 8-5/8" OD, 60° angle legs up to 8", and 90° angle legs up to 6"



SPTB



STK-U

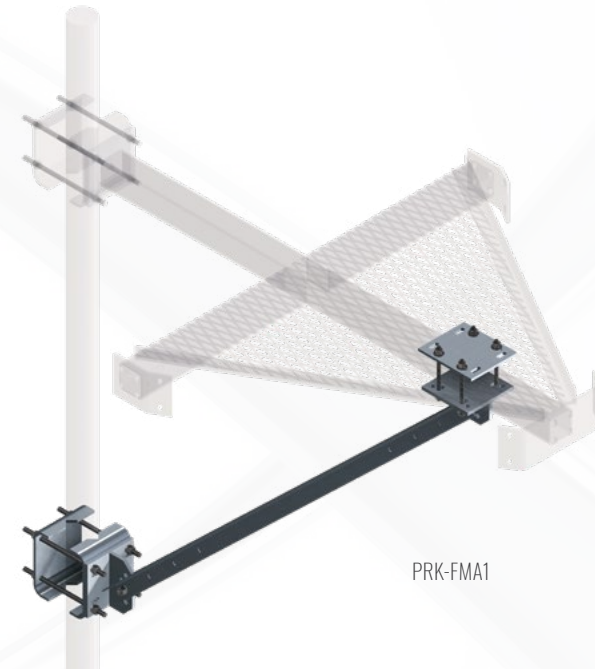
Part#	Description	Pipe size	Length	Weight
STK-U	Sector Frame Stiff Arm Kit	2-3/8" x 12'-6"	150"	64 lb
SPTB	Universal Heavy-Duty Sector Frame Stiff Arm Kit	2-3/8" x 10'-6"	126"	89 lb



# STANDOFF ARM REINFORCEMENT – TOWER

## STANDOFF ARM REINFORCEMENT KITS

- Universal design provides extra capacity to tower platforms or standoff arms
- Provide vertical reinforcement only
- Fit round legs 1-1/2" to 4-1/2" OD, 60° angle legs from 1-1/2" to 4-1/2", and 90° angle legs from 1-1/2" to 3"
- Fit round or square tube standoff arms 1-1/2" to 5"
- Use PRK-FMA for tower platform reinforcement, PRK-FMA1 for standoff arm reinforcement



Part#	Description	Sectors	Horizontal Connection	Angle Size	Weight
PRK-FMA	Tower Platform Reinforcement Kit	3	5" x 5" Max	2L 2-1/2" x 2-1/2" x 3/16" x 84"	330 lb
PRK-FMA1	Single-Arm Standoff Reinforcement Kit	1	5" x 5" Max	2L 2-1/2" x 2-1/2" x 3/16" x 84"	110 lb
PRK-FMA-NA	Attachment hardware only, no angles (arms) included	3	5" x 5" Max	Order Separately	213 lb

# PLATFORM REINFORCEMENT – MONOPOLE

## PLATFORM/ T-ARM REINFORCEMENT KITS

- Simple bolt-on Reinforcement Kits include Ring Mount and Support Arms to reinforce existing platforms or T-arms when increased dead load is required (multiple RRU's)
- Fit round or polygon poles from 12" to 45" diameter, or up to 60" with the addition of the RM-ADK Large Pole Adapter Kit
- The maximum additional vertical load capacity gained is 4,000 lb per sector arm (12,000 lb total)
- PRK-1245, PRK-1245L, and PRK-NA hardware kits fit up to 4" round or square tube standoff arms
- PRK-1245LW hardware kit fits up to 6" round or square tube standoff arms
- PRK-HD hardware kit fits up to 5" round or square tube standoff arms
- Contact us for detailed load and engineering data

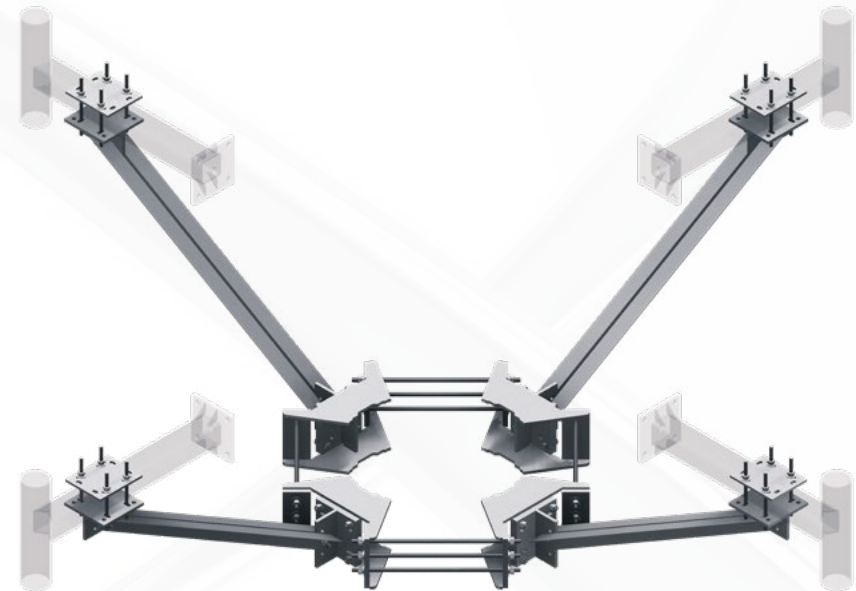


Part#	Description	Pole Diameter	Horizontal Connection	Angle Size	Weight
PRK-1245	Reinforcement Kit	12" to 45"	4" x 4" Max	2L 2-1/2" x 2-1/2" x 3/16" x 52"	467 lb
PRK-1245L	Long Reinforcement Kit	12" to 45"	4" x 4" Max	2L 2-1/2" x 2-1/2" x 3/16" x 84"	518 lb
PRK-NA	Attachment hardware only, no angles (arms) included	12" to 45"	4" x 4" Max	Order Separately	381 lb
PRK-1245LW	Reinforcement Kit, Wide Connection	12" to 45"	6" x 6" Max	2L 2-1/2" x 2-1/2" x 3/16" x 84"	565 lb
PRK-HD	Reinforcement Kit, Heavy-Duty Angle	12" to 45"	5" x 5" Max	2L 3" x 3" x 1/4" x 84"	628 lb
RM-ADK	Large Pole Adapter Kit	45" to 60"	---	---	106 lb

# PLATFORM REINFORCEMENT – MONOPOLE

## PLATFORM/ T-ARM REINFORCEMENT KITS

- Simple bolt-on Reinforcement Kits include Ring Mount and Support Arms to reinforce existing platforms or T-arms when increased dead load is required (multiple RRU's)
- Fit round or polygon poles from 12" to 60" diameter
- Increase platform dead load capacity up to 5,600 lb per sector; contact us for detailed load and engineering data
- The maximum additional vertical load capacity gained is 3,000 lb per sector arm (12,000 lb total)
- Attaching hardware fits up to 4" round or square tube standoff arms
- Attach directly to Fortress™ and SNP series platforms
- Contact us for detailed load and engineering data



PQ-1245

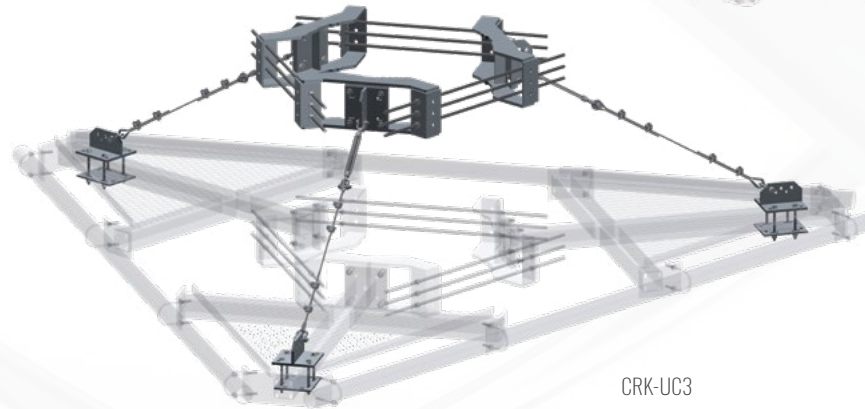
Part#	Description	Pole Diameter	Horizontal Connection	Angle Size	Weight
PQ-1245	Reinforcement Kit	12" to 60"	4" x 4" Max	2L 2-1/2" x 2-1/2" x 3/16" x 52"	605 lb
PQ-1245L	Long Reinforcement Kit	12" to 60"	4" x 4" Max	2L 2-1/2" x 2-1/2" x 3/16" x 84"	677 lb
PQ-NA	Attachment hardware only, no angles (arms) included	12" to 60"	4" x 4" Max	Order Angle Separately	456 lb



# CABLE PLATFORM REINFORCEMENT – MONOPOLE

## CABLE PLATFORM REINFORCEMENT KITS

- Cable Reinforcement Kits provide additional capacity for Fortress™ or other monopole platforms
- Extremely low EPA
- Clamp ring mounts a minimum of 48" above the platform
- 5/16" galvanized aircraft cable
- Universal kit attaching hardware fits up to 4" square tube or round support arms
- Attach to the platform with 5/16" shackles
- CRK-DC3 and CRK-UC3 fit round or polygon poles from 12" to 45" diameter or up to 60" with the addition of the RM-ADK Large Pole Adapter Kit
- CRK-DC4 and CRK-UC4 fit round or polygon poles from 12" to 60" diameter



CRK-DC4

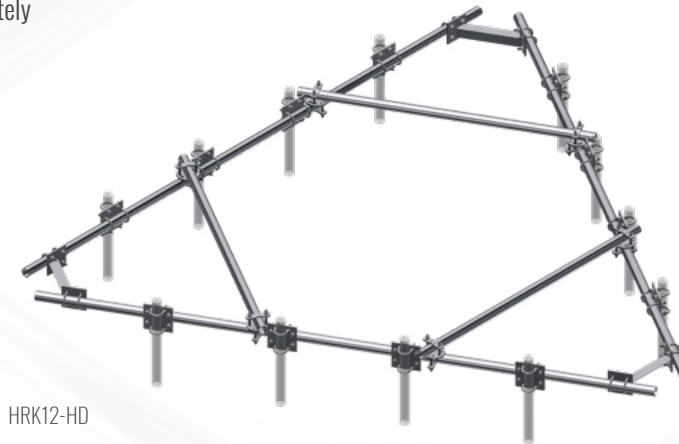
CRK-UC3

Part#	Platform Style	Pole Diameter	Horizontal Connection	Weight
CRK-DC3	Fortress F3P	12" – 45"	4" x 4" Max	349 lb
CRK-DC4	Fortress F4P	12" – 60"	4" x 4" Max	409 lb
CRK-UC3	Universal	12" – 45"	4" x 4" Max	415 lb
CRK-UC4	Universal	12" – 60"	4" x 4" Max	497 lb
RM-ADK	45" to 60" Large Pole Adapter Kit for CRK-DC3 and CRK-UC3		---	106 lb

# HANDRAIL KIT – MONOPOLE

## UNIVERSAL PLATFORM HANDRAIL KITS

- Use to add Handrails and Antenna Pipe support to existing platforms
- Universal design works for a wide variety of platforms
- COMPLETE KITS include:
  - Handrail Pipes
  - (3) Corner Brace Kits
  - (12) Crossover plates and hardware
  - HD kits include 3 additional Cross Brace supports
- Order Antenna Mounting Pipes separately



HRK12-HD



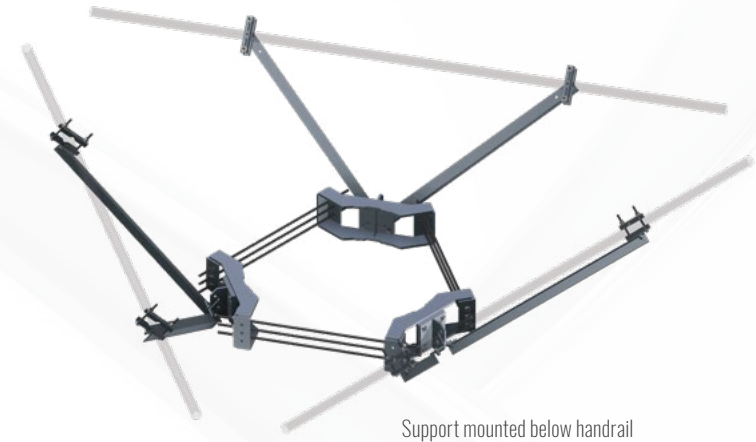
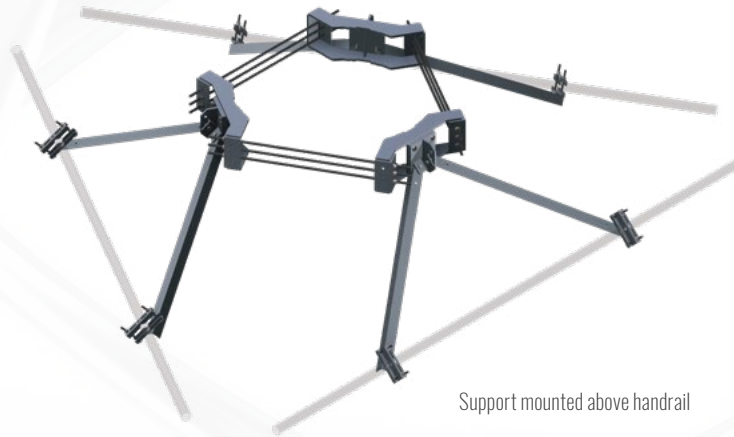
HRK12

Part#	Face Width	Handrail Pipe Size	Antenna Mounting Pipe Size	Weight
HRK12	12'-6"	2-3/8" OD x 150"	2-3/8"	273 lb
HRK14	14'-6"	2-3/8" OD x 174"	2-3/8"	303 lb
HRK12-HD	12'-6"	2-3/8" OD x 150"	2-3/8" or 2-7/8"	407 lb
HRK14-HD	14'-6"	2-3/8" OD x 174"	2-3/8" or 2-7/8"	449 lb
HRK12-3HD	12'-6"	2-7/8" OD x 150"	2-3/8" or 2-7/8"	503 lb
HRK14-3HD	14'-6"	2-7/8" OD x 174"	2-3/8" or 2-7/8"	525 lb

# HANDRAIL REINFORCEMENT – MONOPOLE

## HANDRAIL REINFORCEMENT KITS

- Provide extra rigidity to new or existing platform handrails
- Reinforcement Kits can be installed to support the handrails from above or below
- PRK-SFS and PRK-SFS-L fit round or polygon poles from 12" to 45" diameter, or up to 60" diameter with the addition of the RM-ADK Large Pole Adapter Kit
- PQ-SFS fits round or polygon poles from 12" to 60" diameter
- Handrail connection hardware fits round members 1" to 3-1/2" OD

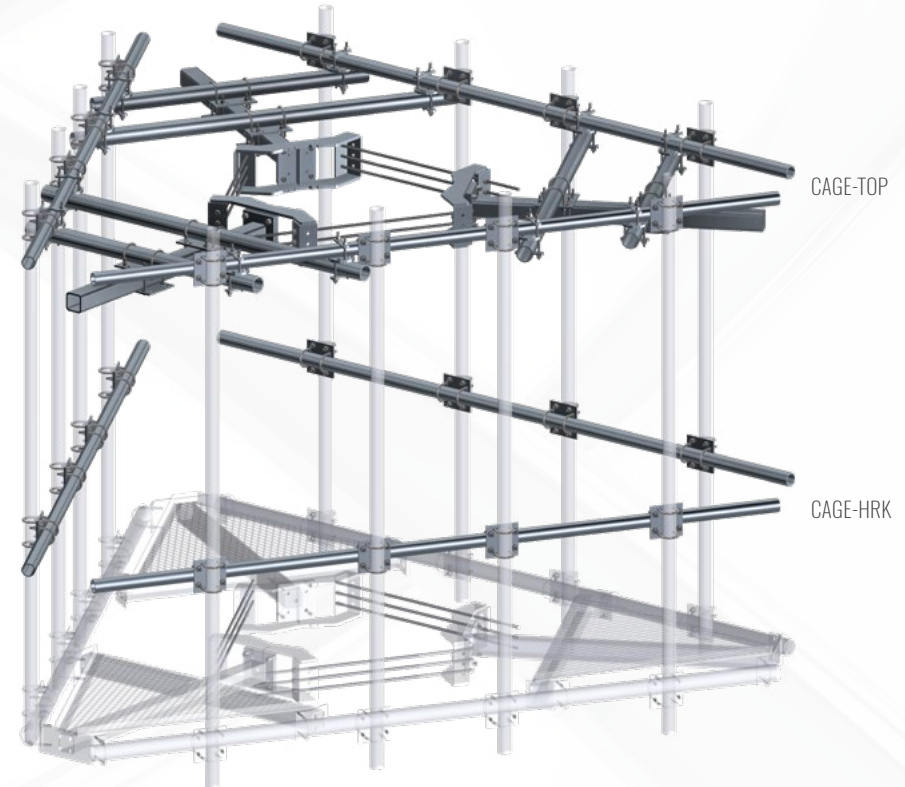


Part#	Description	Angle Size	Weight
PRK-SFS	Handrail Reinforcement Kit	L 2-1/2" x 2-1/2" x 3/16" x 52-1/2"	574 lb
PRK-SFS-L	Long Angle Handrail Reinforcement Kit	L 2-1/2" x 2-1/2" x 3/16" x 72"	643 lb
PQ-SFS	Quad Handrail Reinforcement Kit	L 2-1/2" x 2-1/2" x 1/4" x 120"	758 lb
RM-ADK	Large Pole Adapter Kit for PRK Kits	---	106 lb

# PLATFORM REINFORCEMENT – MONOPOLE

## CAGE TOP™ PLATFORM REINFORCEMENT KIT

- Adds additional capacity to existing 12'-6" platforms
- COMPLETE KIT Includes:
  - Ring Mount
  - (3) Support Arms
  - Platform Cross Arms and bracing
  - Attaching hardware for (12) 2-3/8" or 2-7/8" OD Antenna Mounting Pipes (sold separately)
- Optional Handrail Kit includes 2-3/8" handrails and hardware to attach to 2-3/8" or 2-7/8" Antenna Mounting Pipes
- Contact us for detailed load and engineering data



Part#	Face Width	Pole Diameter	Antenna Pipe (order separately)	Weight
CAGE-TOP	12'-6"	12" to 45"	2-3/8" or 2-7/8"	2,147 lb
CAGE-HRK	12'-6"	---	2-3/8" or 2-7/8"	254 lb
RM-ADK		45" – 60" Large Pole Adapter Kit		106 lb



# HANDRAIL REINFORCEMENT – MONOPOLE

## HANDRAIL REINFORCEMENT KITS

- Provide extra rigidity for existing platform handrails
- Bracing attaches to platform standoff arms
- HSRK-35 hardware fits up to 5" round or square tube standoff arms; HSRK-66 hardware fits up to 6" round or square tube standoff arms
- Handrail attachment hardware fits pipe handrails up to 3-1/2" OD
- Kit installation requires field cutting and drilling



Part#	Angle Size	Weight
HSRK-35	L 3" x 3" x 1/4" x 96"	142 lb
HSRK-66	L 3" x 3" x 1/4" x 96"	143 lb