

SITE
PRO 1

A **valmont**  COMPANY

SMALL CELL SOLUTIONS

SitePro1.com/APT



Adaptive Pole Top (APT) Kits

The APT (Adaptive Pole Top) Kits are universal in nature, enabling you to seamlessly transform any pole into a 5G node. They are designed for ease of installation, maintenance and flexibility with options available for 4G, 5G or combination 4G/5G applications.

A universal solution. Transform any pole into a 5G node.



Transform Existing Poles

Easily transform existing lighting, traffic and utility poles into 4G and/or 5G nodes. They are designed for use with wood, metal, concrete or composite poles.



An Expandable 4G & 5G Solution

Our kits are designed for ease of installation, maintenance and flexibility for 4G, 5G or combination 4G/5G applications. Easily add additional zones by attaching new kits.



A Perfect Match

We can easily match the color of existing infrastructure with over 99.9% accuracy to provide a seamless match of our kits to your color of choice.



Mid Pole Mounting Options

In addition to our pole top kits, we also offer mid pole mounting options to expand small cell coverage.



All the Necessary Accessories

Along with our kits, we provide a full assortment of accessories such as fan solutions, electronics and much more.



New Pole Deployment

For use on new poles, we can easily match existing infrastructure or provide new integrated pole designs.

4G/5G Concealment Pole with XT Top



- 12.75" diameter straight pole shown
- Available in heights up to 40 ft; optional luminaire arm shown
- Offered as a bare pole or with equipment installed
- All equipment doors are key locking, internally hinged, and have wind latches
- Universal antenna mount and shroud included

5G Concealment Pole with Q Top

- 12.75" diameter straight pole shown
- Available in any height; optional luminaire arm shown
- Offered as a bare pole or with equipment installed
- All equipment doors are key locking, internally hinged, and have wind latches
- Universal antenna mount and shroud included



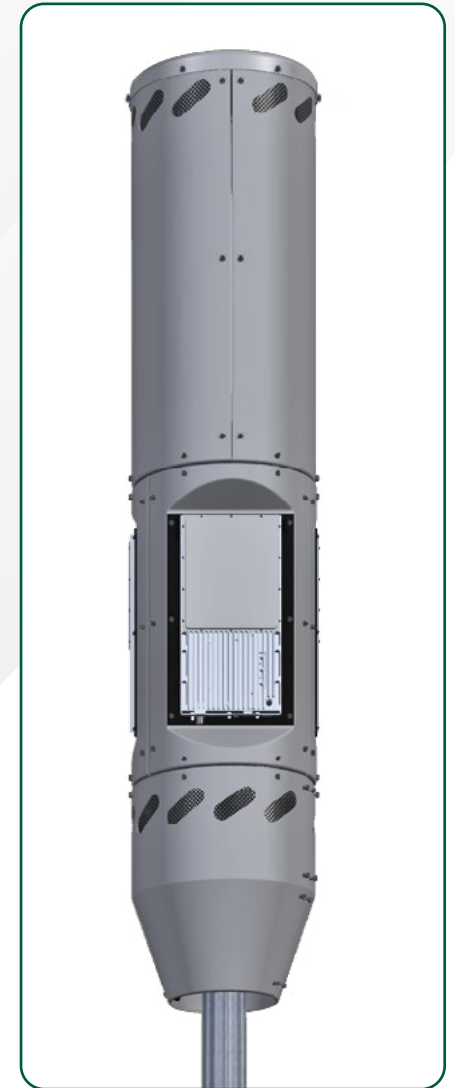
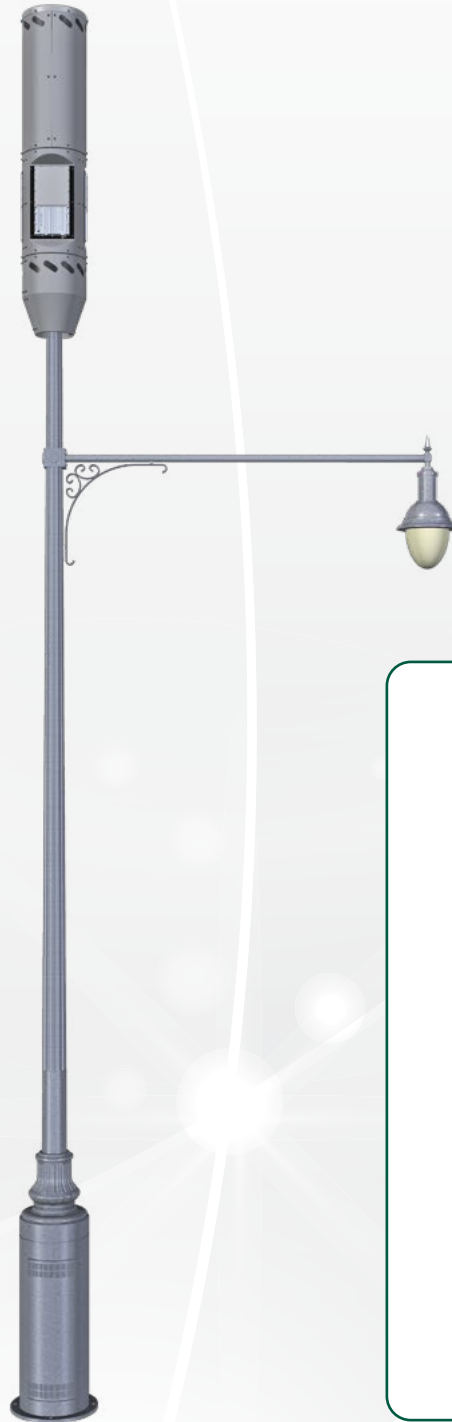
Valmont 4G Pole with Square Structural Concealment Base and Standoff



- Tapered and fluted decorative pole shown
- Pole is designed to match a city's existing light poles
- Structural square equipment base at bottom for integrating equipment

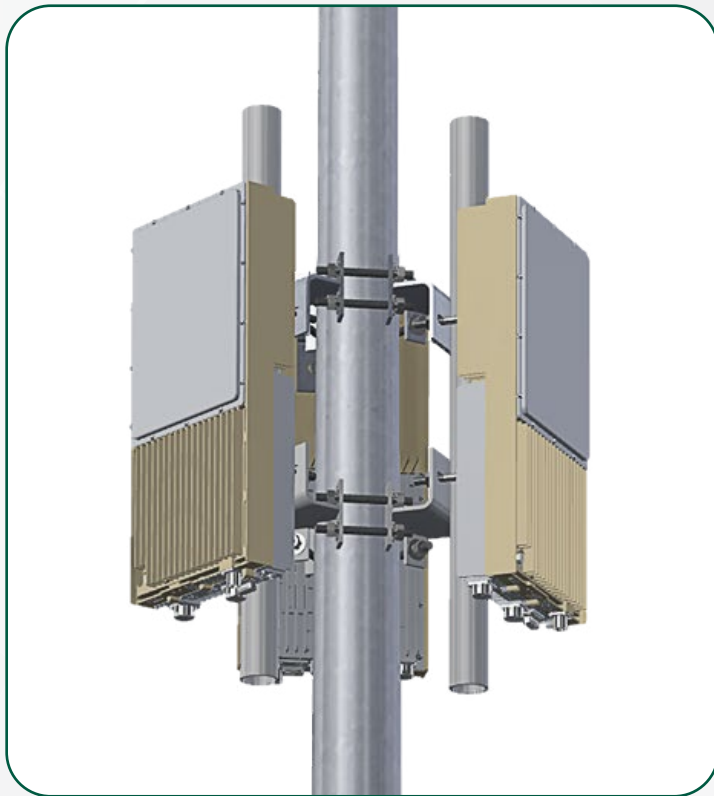
Valmont 4G/5G Pole with Round Structural Concealment Base and XT Top

- Tapered and fluted decorative pole shown
- Pole is designed to match a city's existing light poles
- Structural round equipment base at bottom for integrating equipment



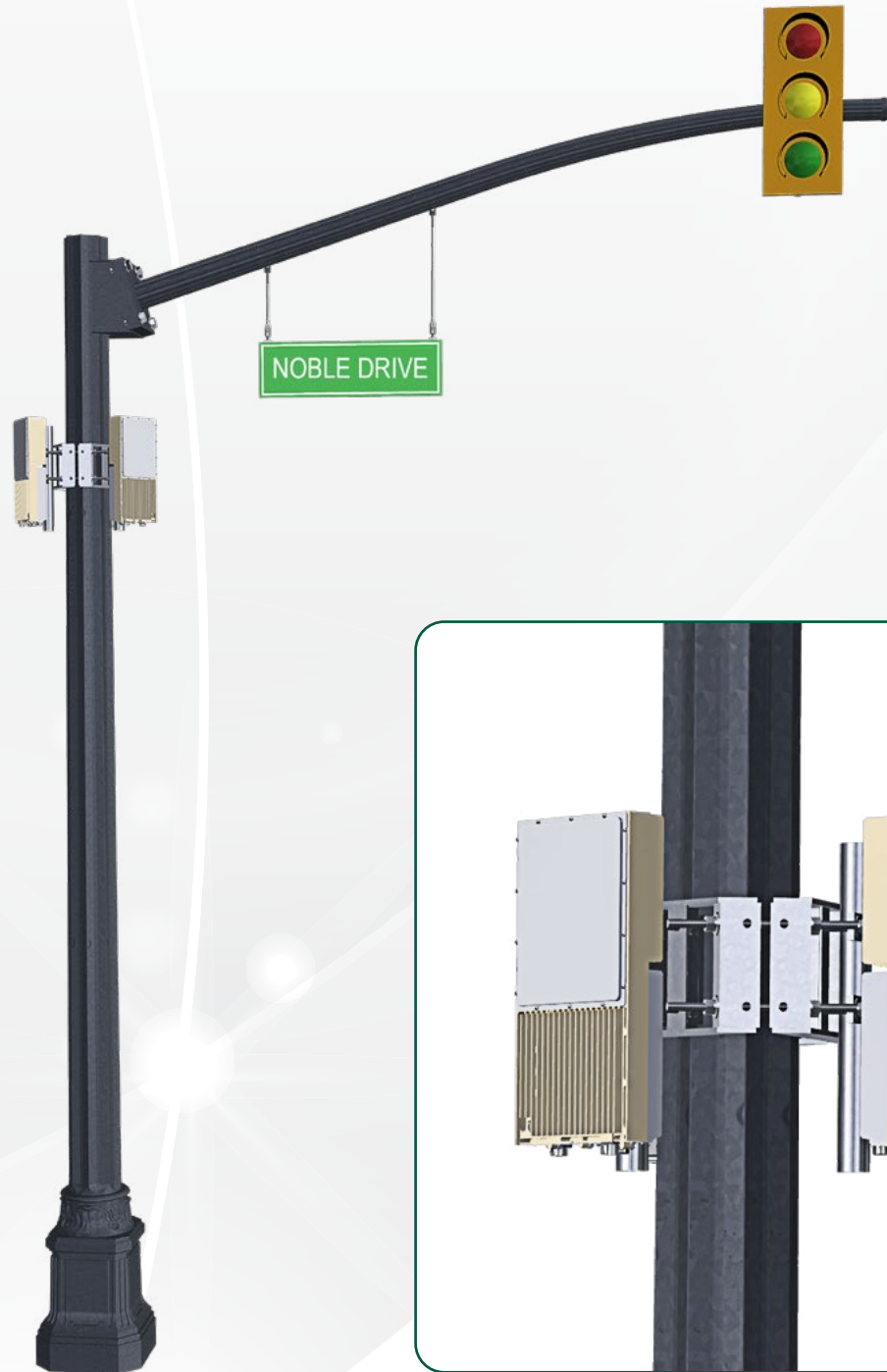
Valmont 5G Dual Use Light Pole

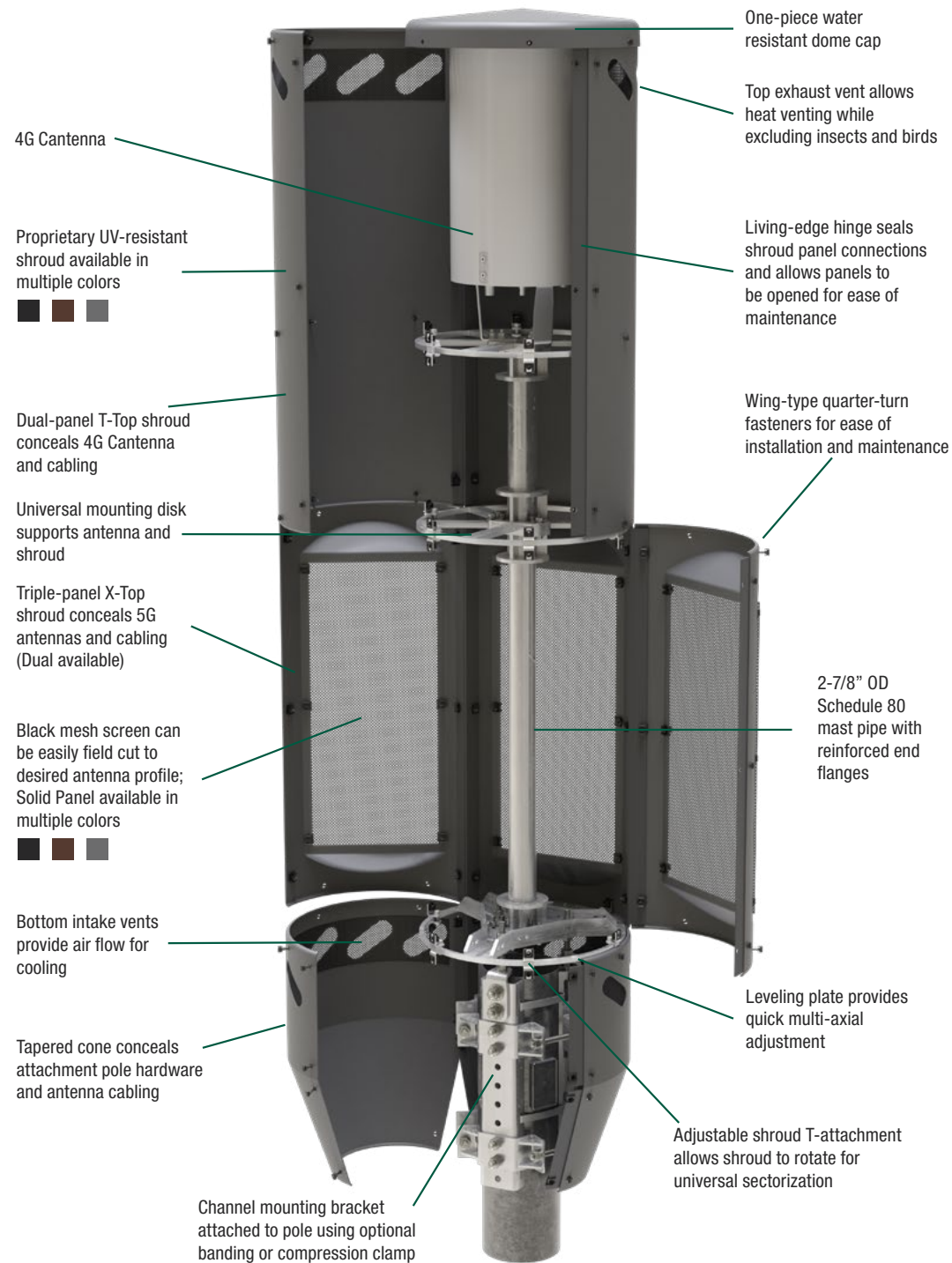
- Tapered aluminum pole shown
- Pole is designed to match a city's existing light poles
- Site Pro 1 unique universal mounting kit holds radios adjacent to the pole



Valmont 5G Dual Use Traffic Pole

- Straight steel pole shown
- Decorative base is designed to match a city's existing structures
- Site Pro 1 unique universal mounting kit holds radios adjacent to the pole





4G/5G 22"

XT-Top

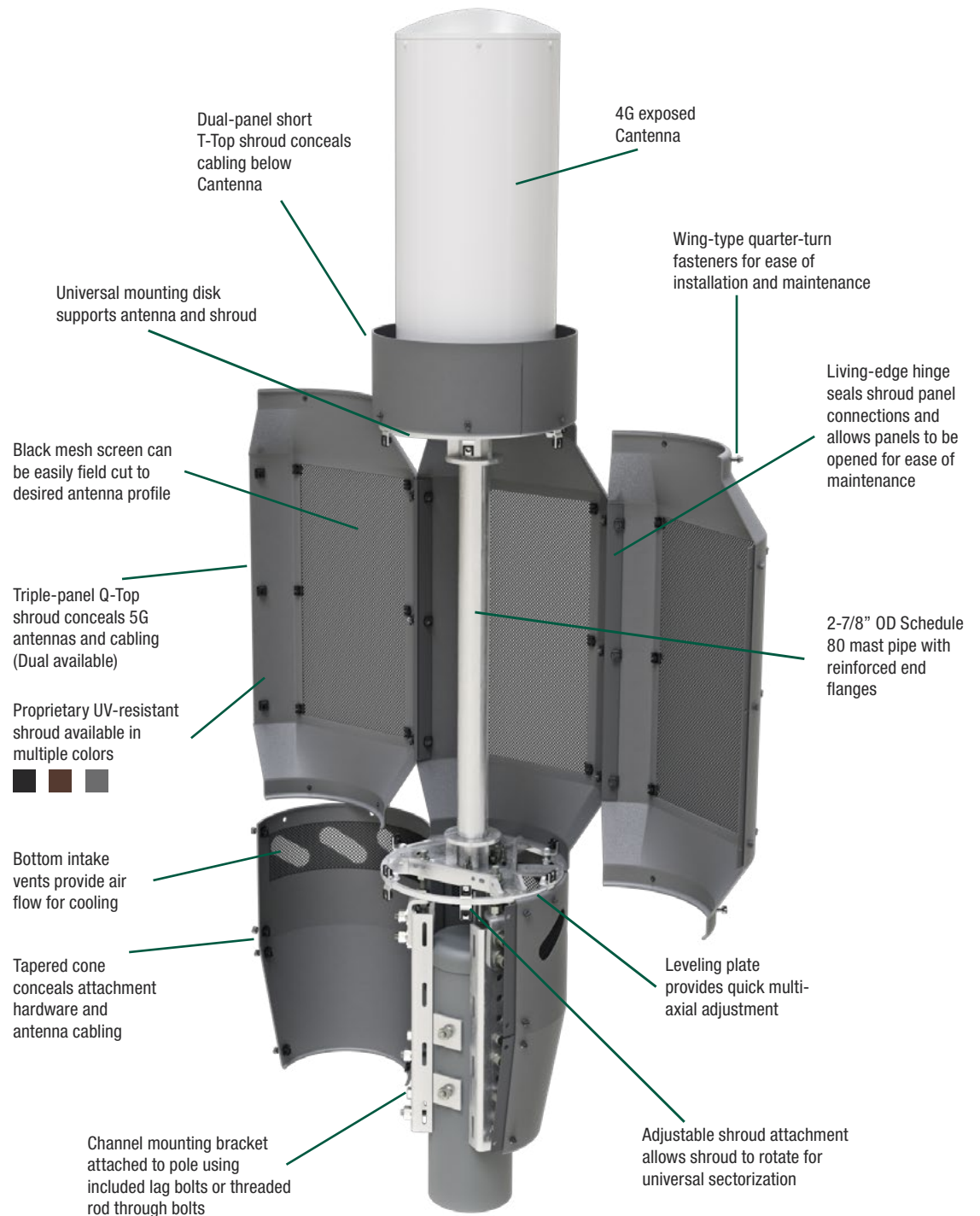
Concealment Shroud

Closed View:



4G/5G 18" QT-Top Open Shroud

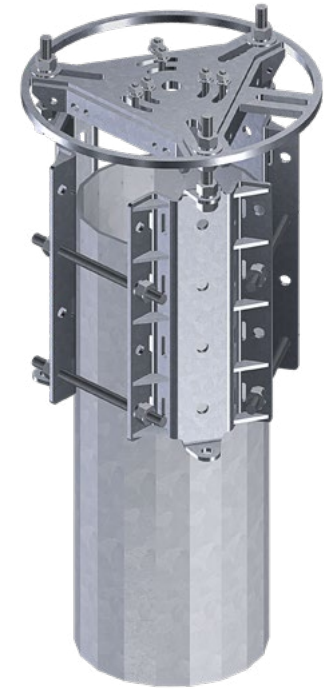
Closed View:



Universal Pole Top Kits

Part #	Disc Diameter	Channel Length	Pole Diameter
APT-3SU14	14"	15"	4-1/2" - 10"
APT-3SU18	18"	15"	4-1/2" - 14"
APT-3SU22	22"	15"	4-1/2" - 18"
APT-3SU26	26"	15"	4-1/2" - 22"
APT-3LU14	14"	21"	4-1/2" - 10"
APT-3LU18	18"	21"	4-1/2" - 14"
APT-3LU22	22"	21"	4-1/2" - 18"
APT-3LU26	26"	21"	4-1/2" - 22"
BA206	Stainless Steel Banding, 3/4" x 100' roll		
BU256-25	Stainless Steel Banding Buckles 25/pk		

- Provide 10° multi-axial adjustment
- Fit standard 4G antennas using 3/8" mounting hardware on 4" and 6" bolt circles or 3/4" to 1" center stud
- Attach to wood, metal, concrete, or composite poles
- Can be mounted as a clamp-on kit requiring no pole modification
- Kits include threaded rod and lag bolts for direct mounting, or can be mounted with banding (purchased separately)





- Provide 10° multi-axial adjustment"
- Fit standard 4G antennas using 3/8" mounting hardware on 4" and 6" bolt circles or 3/4" to 1" center stud
- Attach to wood, metal, concrete, or composite poles
- Kits include threaded rod and lag bolts for direct mounting, or can be mounted with banding (purchased separately)

Standard Pole Top Kits (2 Legs)

Part #	Disc Diameter	Channel Length	Pole Diameter
APT-2S14	14"	15"	4-1/2" - 10"
APT-2S18	18"	15"	4-1/2" - 14"
APT-2S22	22"	15"	4-1/2" - 18"
APT-2S26	26"	15"	4-1/2" - 22"
APT-2L14	14"	21"	4-1/2" - 10"
APT-2L18	18"	21"	4-1/2" - 14"
APT-2L22	22"	21"	4-1/2" - 18"
APT-2L26	26"	21"	4-1/2" - 22"
BA206	Stainless Steel Banding, 3/4" x 100' roll		
BU256-25	Stainless Steel Banding Buckles 25/pk		

Standard Pole Top Kits (3 Legs)

Part #	Disc Diameter	Channel Length	Pole Diameter
APT-3S14	14"	15"	4-1/2" - 10"
APT-3S18	18"	15"	4-1/2" - 14"
APT-3S22	22"	15"	4-1/2" - 18"
APT-3S26	26"	15"	4-1/2" - 22"
APT-3L14	14"	21"	4-1/2" - 10"
APT-3L18	18"	21"	4-1/2" - 14"
APT-3L22	22"	21"	4-1/2" - 18"
APT-3L26	26"	21"	4-1/2" - 22"
APT-CC2	Clamp-on Attachment Kit (2 Level)		
BA206	Stainless Steel Banding, 3/4" x 100' roll		
BU256-25	Stainless Steel Banding Buckles 25/pk		

- Provide 10° multi-axial adjustment
- Fit standard 4G antennas using 3/8" mounting hardware on 4" and 6" bolt circles or 3/4" to 1" center stud
- Attach to wood, metal, concrete, or composite poles
- Kits include threaded rod and lag bolts for direct mounting, or can be mounted with banding (purchased separately)
- Clamp-on attachment kit or banding can be purchased separately



Standard-Duty Pole Top Extension Kits

Part #	Pole Diameter	Disc Diameter	Mast Height
APT-3L1406S	4-1/2" - 10"	14"	6"
APT-3L1430S	4-1/2" - 10"	14"	30"
APT-3L1454S	4-1/2" - 10"	14"	54"
APT-3L1806S	4-1/2" - 14"	18"	6"
APT-3L1830S	4-1/2" - 14"	18"	30"
APT-3L1854S	4-1/2" - 14"	18"	54"
APT-3L2206S	4-1/2" - 18"	22"	6"
APT-3L2230S	4-1/2" - 18"	22"	30"
APT-3L2254S	4-1/2" - 18"	22"	54"
APT-CC2	Clamp-on Attachment Kit (2 Level)		
BA206	Stainless Steel Banding, 3/4" x 100' roll		
BU256-25	Stainless Steel Banding Buckles 25/pk		

- Provide 10° multi-axial adjustment
- 2-3/8" sch 40 diameter mast for 5G and 4G panel antennas
- Attach to wood, metal, concrete, or composite poles
- Kits include threaded rod and lag bolts for direct mounting
- Clamp-on attachment kit or banding can be purchased separately
- Non-extendable

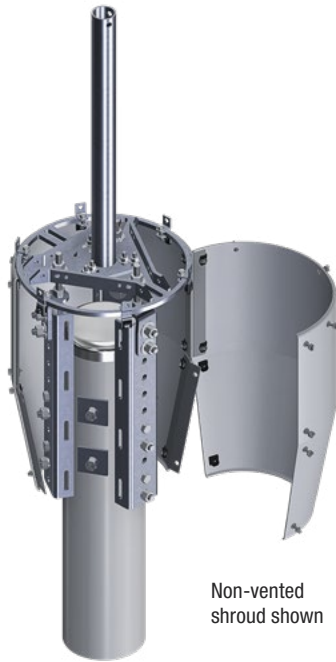


- Provide 10° multi-axial adjustment
- 2-7/8" sch 80 diameter mast for 5G and 4G panel antennas
- Mast includes top flange for cantenna mounting or to support future shrouding
- Attach to wood, metal, concrete, or composite poles
- Kits include threaded rod and lag bolts for direct mounting
- Clamp-on attachment kit or banding can be purchased separately

Heavy-Duty Pole Top Extension Kits

Part #	Pole Diameter	Disc Diameter	Mast Height
APT-3L1418D	4-1/2" - 10"	14"	18"
APT-3L1430D	4-1/2" - 10"	14"	30"
APT-3L1442D	4-1/2" - 10"	14"	42"
APT-3L1818D	4-1/2" - 14"	18"	18"
APT-3L1830D	4-1/2" - 14"	18"	30"
APT-3L1842D	4-1/2" - 14"	18"	42"
APT-3L2218D	4-1/2" - 18"	22"	18"
APT-3L2230D	4-1/2" - 18"	22"	30"
APT-3L2242D	4-1/2" - 18"	22"	42"
APT-CC2	Clamp-on Attachment Kit (2 Level)		
BA206	Stainless Steel Banding, 3/4" x 100' roll		
BU256-25	Stainless Steel Banding Buckles 25/pk		

Standard-Duty Pole Top Extension Kits with Cone



Non-vented
shroud shown

- 2-3/8" sch 40 non-extendable mast for 5G antennas
- Available with vented or non-vented cone
- For standard colors replace the "x" in the part number with color code "K" for black, "B" for brown, or "U" for gray
- Non-standard colors also available with 99% accuracy, please inquire

Part #	Pole Diameter	Disc Diameter	Mast Height
APT-2C1806Nx	4-1/2" - 14"	18"	6"
APT-2C1830Nx	4-1/2" - 14"	18"	30"
APT-2C1854Nx	4-1/2" - 14"	18"	54"
APT-2C2206Nx	4-1/2" - 18"	22"	6"
APT-2C2230Nx	4-1/2" - 18"	22"	30"
APT-2C2254Nx	4-1/2" - 18"	22"	54"
APT-CC2	Clamp-on Attachment Kit (2 Level)		
BA206	Stainless Steel Banding, 3/4" x 100' roll		
BU256-25	Stainless Steel Banding Buckles 25/pk		

Heavy-Duty Pole Top Extension Kits with Cone

Part #	Pole Diameter	Disc Diameter	Mast Height
APT-2C1818Vx	4-1/2" - 14"	18"	18"
APT-2C1830Vx	4-1/2" - 14"	18"	30"
APT-2C1842Vx	4-1/2" - 14"	18"	42"
APT-2C2218Vx	4-1/2" - 18"	22"	18"
APT-2C2230Vx	4-1/2" - 18"	22"	30"
APT-2C2242Vx	4-1/2" - 18"	22"	42"
APT-CC2	Clamp-on Attachment Kit (2 Level)		
BA206	Stainless Steel Banding, 3/4" x 100' roll		
BU256-25	Stainless Steel Banding Buckles 25/pk		

- 2-7/8" sch 80 expandable 5G mast with top flange for 4G cantenna with standard 3/8" hardware
- Available with vented or non-vented cone
- For standard colors replace the "x" in the part number with color code "K" for black, "B" for brown, or "U" for gray
- Non-standard colors also available with 99% accuracy, please inquire

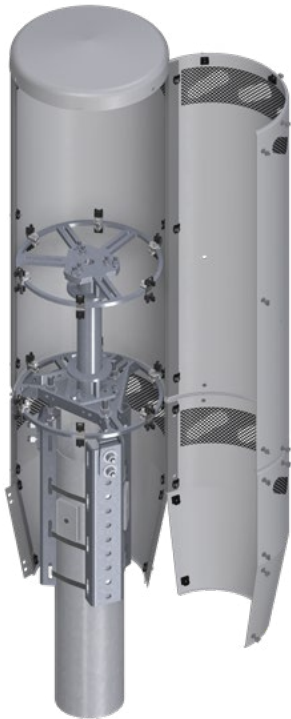


Vented
shroud shown

4G T-Top Open Shrouds with Cone

Part #	Equipment Zone Dia x H	Disc Diameter	Shroud Height
APT-2T1808Ex	18" x 8"	18"	32"
APT-2T1826Ex	18" x 26"	18"	50"
APT-2T2208Ex	22" x 8"	22"	32"
APT-2T2226Ex	22" x 26"	22"	50"
APT-CC2	Clamp-on Attachment Kit (2 Level)		
BA206	Stainless Steel Banding, 3/4" x 100' roll		
BU256-25	Stainless Steel Banding Buckles 25/pk		

- Open shrouds offer an exposed antenna while concealing cables and mounting brackets
- Shroud heights include 24" cone plus shroud extension
- Use 18" disc for poles up to 14" diameter, 22" disc for poles up to 18" diameter
- For standard colors replace the "x" in the part number with color code "K" for black, "B" for brown, or "U" for gray
- Non-standard colors also available with 99% accuracy, please inquire



- Cylindrical shrouds provide full concealment of antenna, cables and equipment
- Shroud heights include 24" cone plus shroud extension
- Two-part shrouds hinge open for easy access
- One-piece weather resistant dome cap
- Use 18" disc for poles up to 14" diameter, 22" disc for poles up to 18" diameter
- For standard colors replace the "x" in the part number with color code "K" for black, "B" for brown, or "U" for gray
- Non-standard colors also available with 99% accuracy, please inquire

4G T-Top Concealment Shrouds with Cone

Part #	Equipment Zone Dia x H	Disc Diameter	Shroud Height
APT-2T1836Vx	18" x 36"	18"	60"
APT-2T1848Vx	18" x 48"	18"	72"
APT-2T2236Vx	22" x 36"	22"	60"
APT-2T2248Vx	22" x 48"	22"	72"
APT-CC2	Clamp-on Attachment Kit (2 Level)		
BA206	Stainless Steel Banding, 3/4" x 100' roll		
BU256-25	Stainless Steel Banding Buckles 25/pk		



Dual T-Top POD Extensions

- Pop-in PODS fit between existing cone or shrouds
- Two-parts doors can be opened on each side
- Cylindrical shrouds provides full concealment of cables and equipment
- PODs can be stacked; see engineering letter for maximum height options based on design wind speed
- For standard colors replace the "x" in the part number with color code "K" for black, "B" for brown, or "U" for gray
- Non-standard colors also available with 99% accuracy, please inquire

Part #	Equipment Zone Dia x H	Pole Size
POD-2T1818Vx	18" x 18"	4-1/2" - 14"
POD-2T1836Vx	18" x 36"	4-1/2" - 14"
POD-2T2218Vx	22" x 18"	4-1/2" - 18"
POD-2T2236Vx	22" x 36"	4-1/2" - 18"

Triple T-Top POD Extensions

Part #	Equipment Zone Dia x H	Pole Size
POD-3T1818Vx	18" x 18"	4-1/2" - 14"
POD-3T1836Vx	18" x 36"	4-1/2" - 14"
POD-3T2218Vx	22" x 18"	4-1/2" - 18"
POD-3T2236Vx	22" x 36"	4-1/2" - 18"

- Pop-in PODS fit between existing cone and shroud
- Three-parts doors can be opened on each side
- Cylindrical shrouds provides full concealment of cables and equipment
- PODs can be stacked; see engineering letter for maximum height options based on design wind speed
- For standard colors replace the "x" in the part number with color code "K" for black, "B" for brown, or "U" for gray
- Non-standard colors also available with 99% accuracy, please inquire



5G Dual Sector Q-Top

Part #	Equipment Zone Dia x H	Window Opening W x H	Shroud Dimensions Dia x H
APT-2Q1842Vx	18" x 42"	13" x 26"	18" x 74"
APT-CC2	Clamp-on Attachment Kit (2 Level)		
BA206	Stainless Steel Banding, 3/4" x 100' roll		
BU256-25	Stainless Steel Banding Buckles 25/pk		

- Fits poles up to 14" diameter
- Shroud height includes 24" cone plus shroud extension
- Two-part doors can be opened on each side
- Outward-formed windows are designed to flush mount all common 5G antennas
- Cylindrical shroud provides full concealment of cables and antennas
- One-piece cap
- For standard colors replace the "x" in the part number with color code "K" for black, "B" for brown, or "U" for gray
- Non-standard colors also available with 99% accuracy, please inquire



- Fits poles up to 18" diameter
- Shroud height includes 24" cone plus shroud extension
- Two-part doors can be opened on each side
- Inward-formed windows are designed to flush mount all common 5G antennas
- Cylindrical shroud provides full concealment of cables and antennas
- One-piece cap
- For standard colors replace the "x" in the part number with color code "K" for black, "B" for brown, or "U" for gray
- Non-standard colors also available with 99% accuracy, please inquire

5G Dual Sector X-Top

Part #	Equipment Zone Dia x H	Window Opening W x H	Shroud Dimensions Dia x H
APT-2X2242Vx	22" x 42"	13" x 30"	22" x 74"
APT-CC2	Clamp-on Attachment Kit (2 Level)		
BA206	Stainless Steel Banding, 3/4" x 100' roll		
BU256-25	Stainless Steel Banding Buckles 25/pk		



5G Dual Sector Q-Top POD Extension

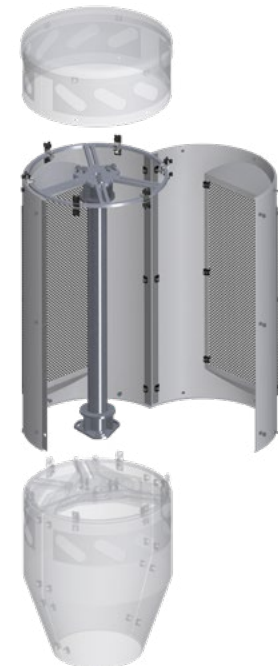
- Pop-in POD fits between existing cone and shroud
- Two-part doors can be opened on each side
- Cylindrical shroud provides full concealment of cables and equipment
- PODs can be stacked; see engineering letter for maximum height options based on design wind speed
- For standard colors replace the “x” in the part number with color code “K” for black, “B” for brown, or “U” for gray
- Non-standard colors also available with 99% accuracy, please inquire

Part #	Equipment Zone Dia x H	Window Opening W x H
POD-2Q1842Vx	18" x 42"	13" x 26"

5G Dual Sector X-Top POD Extension

Part #	Equipment Zone Dia x H	Pole Size
POD-3T1818Vx	18" x 18"	4-1/2" - 14"

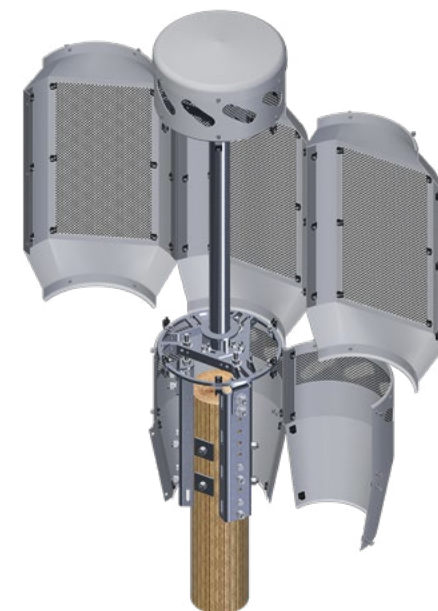
- Pop-in POD fits between existing cone and shroud
- Two-part doors can be opened on each side
- Cylindrical shroud provides full concealment of cables and equipment
- PODs can be stacked; see engineering letter for maximum height options based on design wind speed
- For standard colors replace the “x” in the part number with color code “K” for black, “B” for brown, or “U” for gray
- Non-standard colors also available with 99% accuracy, please inquire



5G Triple Sector Q-Top

Part #	Equipment Zone Dia x H	Window Opening W x H	Shroud Dimensions Dia x H
APT-3Q1842Vx	18" x 42"	13" x 26"	18" x 74"
APT-CC2	Clamp-on Attachment Kit (2 Level)		
BA206	Stainless Steel Banding, 3/4" x 100' roll		
BU256-25	Stainless Steel Banding Buckles 25/pk		

- Fits poles up to 14" diameter
- Shroud height includes 24" cone plus shroud extension
- Three-part doors can be opened on each side
- Outward-formed windows are designed to flush mount all common 5G antennas
- Cylindrical shroud provides full concealment of cables and antennas
- One-piece cap
- For standard colors replace the "x" in the part number with color code "K" for black, "B" for brown, or "U" for gray
- Non-standard colors also available with 99% accuracy, please inquire



- Fits poles up to 18" diameter
- Shroud height includes 24" cone plus shroud extension
- Three-part doors can be opened on each side
- Inward-formed windows are designed to flush mount all common 5G antennas
- Cylindrical shroud provides full concealment of cables and antennas
- One-piece cap
- For standard colors replace the "x" in the part number with color code "K" for black, "B" for brown, or "U" for gray
- Non-standard colors also available with 99% accuracy, please inquire

5G Triple Sector X-Top

Part #	Equipment Zone Dia x H	Window Opening W x H	Shroud Dimensions Dia x H
APT-2X2242Vx	22" x 42"	13" x 30"	22" x 74"
APT-CC2	Clamp-on Attachment Kit (2 Level)		
BA206	Stainless Steel Banding, 3/4" x 100' roll		
BU256-25	Stainless Steel Banding Buckles 25/pk		



- Pop-in POD fits between existing cone and shroud
- Three-part doors can be opened on each side
- Cylindrical shroud provides full concealment of cables and equipment
- PODs can be stacked; see engineering letter for maximum height options based on design wind speed
- For standard colors replace the “x” in the part number with color code “K” for black, “B” for brown, or “U” for gray
- Non-standard colors also available with 99% accuracy, please inquire

5G Dual Sector Q-Top POD Extension

Part #	Equipment Zone Dia x H	Window Opening W x H
POD-3Q1842Vx	18" x 42"	13" x 26"

5G Dual Sector X-Top POD Extension

Part #	Equipment Zone Dia x H	Window Opening W x H
POD-3X2242Vx	22" x 42"	13" x 30"

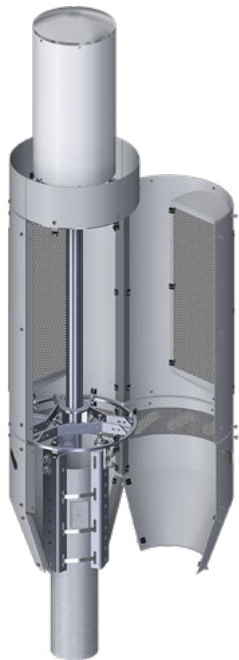
- Pop-in POD fits between existing cone and shroud
- Three-part doors can be opened on each side
- Cylindrical shroud provides full concealment of cables and equipment
- PODs can be stacked; see engineering letter for maximum height options based on design wind speed
- For standard colors replace the “x” in the part number with color code “K” for black, “B” for brown, or “U” for gray
- Non-standard colors also available with 99% accuracy, please inquire



4G/5G Dual QT Open Shroud

Part #	Equipment Zone Dia x H	Window Opening W x H	Shroud Dimensions Dia x H
APT-2Q2T1850Ex	4G: 18" x 8" 5G: 18" x 42"	13" x 26"	18" x 74"
APT-CC2	Clamp-on Attachment Kit (2 Level)		
BA206	Stainless Steel Banding, 3/4" x 100' roll		
BU256-25	Stainless Steel Banding Buckles 25/pk		

- Fits poles up to 14" diameter
- Shroud height includes 24" cone plus shroud extension
- Top open shroud provides concealment of cables for 4G antenna
- Outward-formed windows in lower shroud are designed to flush mount all common 5G antennas
- Two-part doors can be opened on each side
- For standard colors replace the "x" in the part number with color code "K" for black, "B" for brown, or "U" for gray
- Non-standard colors also available with 99% accuracy, please inquire



- Fits poles up to 18" diameter
- Shroud height includes 24" cone plus shroud extension
- Top open shroud provides concealment of cables for 4G antenna
- Inward-formed windows in lower shroud are designed to flush mount all common 5G antennas
- Two-part doors can be opened on each side
- For standard colors replace the "x" in the part number with color code "K" for black, "B" for brown, or "U" for gray
- Non-standard colors also available with 99% accuracy, please inquire

4G/5G Dual XT Open Shroud

Part #	Equipment Zone Dia x H	Window Opening W x H	Shroud Dimensions Dia x H
APT-2X2T2250Ex	4G: 22" x 8" 5G: 22" x 42"	13" x 30"	22" x 74"
APT-CC2	Clamp-on Attachment Kit (2 Level)		
BA206	Stainless Steel Banding, 3/4" x 100' roll		
BU256-25	Stainless Steel Banding Buckles 25/pk		



- Fits poles up to 14" diameter
- Shroud height includes 24" cone plus shroud extension
- Top open shroud provides concealment of cables for 4G antenna
- Outward-formed windows in lower shroud are designed to flush mount all common 5G antennas
- Three-part doors can be opened on each side
- For standard colors replace the "x" in the part number with color code "K" for black, "B" for brown, or "U" for gray
- Non-standard colors also available with 99% accuracy, please inquire

4G/5G Triple QT Open Shroud

Part #	Equipment Zone Dia x H	Window Opening W x H	Shroud Dimensions Dia x H
APT-3Q2T1850Ex	4G: 18" x 8" 5G: 18" x 42"	13" x 26"	18" x 74"
APT-CC2	Clamp-on Attachment Kit (2 Level)		
BA206	Stainless Steel Banding, 3/4" x 100' roll		
BU256-25	Stainless Steel Banding Buckles 25/pk		

4G/5G Triple XT Open Shroud

Part #	Equipment Zone Dia x H	Window Opening W x H	Shroud Dimensions Dia x H
APT-3X2T2250Ex	4G: 22" x 8" 5G: 22" x 42"	13" x 30"	22" x 74"
APT-CC2	Clamp-on Attachment Kit (2 Level)		
BA206	Stainless Steel Banding, 3/4" x 100' roll		
BU256-25	Stainless Steel Banding Buckles 25/pk		

- Fits poles up to 18" diameter
- Shroud height includes 24" cone plus shroud extension
- Top open shroud provides concealment of cables for 4G antenna
- Inward-formed windows in lower shroud are designed to flush mount all common 5G antennas
- Three-part doors can be opened on each side
- For standard colors replace the "x" in the part number with color code "K" for black, "B" for brown, or "U" for gray
- Non-standard colors also available with 99% accuracy, please inquire



4G/5G Dual QT Concealment Shroud

Part #	Equipment Zone Dia x H	Window Opening W x H	Shroud Dimensions Dia x H
APT-2Q2T1890Vx	4G: 18" x 48" 5G: 18" x 42"	13" x 26"	18" x 114"
APT-CC2	Clamp-on Attachment Kit (2 Level)		
BA206	Stainless Steel Banding, 3/4" x 100' roll		
BU256-25	Stainless Steel Banding Buckles 25/pk		

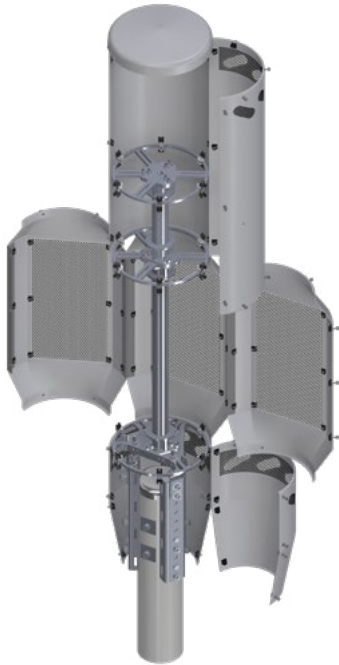
- Fits poles up to 14" diameter
- Shroud height includes 24" cone plus shroud extension
- Cylindrical top shroud provides full concealment of cable and antennas
- Outward-formed windows in lower shroud are designed to flush mount all common 5G antennas
- Two-part doors can be opened on either side
- For standard colors replace the "x" in the part number with color code "K" for black, "B" for brown, or "U" for gray
- Non-standard colors also available with 99% accuracy, please inquire



- Fits poles up to 18" diameter
- Shroud height includes 24" cone plus shroud extension
- Cylindrical top shroud provides full concealment of cable and antennas
- Inward-formed windows in lower shroud are designed to flush mount all common 5G antennas
- Two-part doors can be opened on either side
- For standard colors replace the "x" in the part number with color code "K" for black, "B" for brown, or "U" for gray
- Non-standard colors also available with 99% accuracy, please inquire

4G/5G Dual XT Concealment Shroud

Part #	Equipment Zone Dia x H	Window Opening W x H	Shroud Dimensions Dia x H
APT-2X2T2290Vx	4G: 22" x 48" 5G: 22" x 42"	13" x 30"	22" x 114"
APT-CC2	Clamp-on Attachment Kit (2 Level)		
BA206	Stainless Steel Banding, 3/4" x 100' roll		
BU256-25	Stainless Steel Banding Buckles 25/pk		



- Fits poles up to 14" diameter
- Shroud height includes 24" cone plus shroud extension
- Cylindrical top shroud provides full concealment of cable and antennas
- Outward-formed windows in lower shroud are designed to flush mount all common 5G antennas
- Hinged doors can be opened from each side
- For standard colors replace the "x" in the part number with color code "K" for black, "B" for brown, or "U" for gray
- Non-standard colors also available with 99% accuracy, please inquire

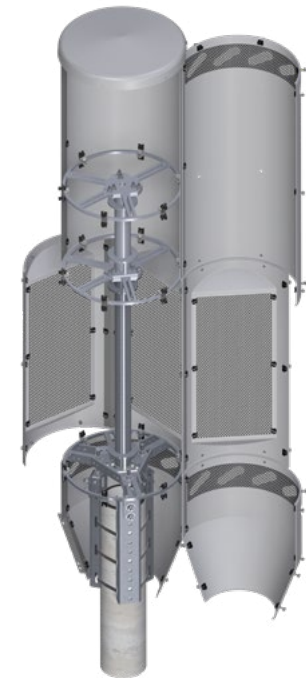
4G/5G Triple QT Concealment Shroud

Part #	Equipment Zone Dia x H	Window Opening W x H	Shroud Dimensions Dia x H
APT-3Q2T1890Vx	4G: 18" x 48" 5G: 18" x 42"	13" x 26"	18" x 114"
APT-CC2	Clamp-on Attachment Kit (2 Level)		
BA206	Stainless Steel Banding, 3/4" x 100' roll		
BU256-25	Stainless Steel Banding Buckles 25/pk		

4G/5G Triple XT Concealment Shroud

Part #	Equipment Zone Dia x H	Window Opening W x H	Shroud Dimensions Dia x H
APT-3X2T2290Vx	4G: 22" x 48" 5G: 22" x 42"	13" x 30"	22" x 114"
APT-CC2	Clamp-on Attachment Kit (2 Level)		
BA206	Stainless Steel Banding, 3/4" x 100' roll		
BU256-25	Stainless Steel Banding Buckles 25/pk		

- Fits poles up to 18" diameter
- Shroud height includes 24" cone plus shroud extension
- Cylindrical top shroud provides full concealment of cable and antennas
- Inward-formed windows in lower shroud are designed to flush mount all common 5G antennas
- Hinged doors can be opened from each side
- For standard colors replace the "x" in the part number with color code "K" for black, "B" for brown, or "U" for gray
- Non-standard colors also available with 99% accuracy, please inquire



Gimbal Pole Top Mounts

Part #	Description	Channel Length	Pole Diameter
APT-GIMBAL15	Short Multi-Axial Adjustment Pole Top Kit	15"	3-1/2" – 9"
APT-GIMBAL21	Long Multi-Axial Adjustment Pole Top Kit	21"	3-1/2" – 9"
BA206	Stainless Steel Banding, 3/4" x 100' roll		
BU256-25	Stainless Steel Banding Buckles, 25/pk		

- Provide 10° multi-axial adjustment
- Fit standard 4G antennas using 3/8" mounting hardware on 4" and 6" bolt circles or 3/4" – 1" center stud
- Accommodate flanged pipe extensions (purchased separately)
- Attach to wood, metal, concrete, or composite poles
- Kits include threaded rods and lag bolts for direct mounting
- Can also be mounted with banding (purchased separately)



Gimbal



- Provides 10° multi-axial adjustment
- Fits standard 4G antennas using 3/8" mounting hardware on 4" and 6" bolt circles (top and bottom) or 3/4" – 1" center stud
- Accommodates flanged pipe extensions (purchased separately)

Part #	Description	Height
APT-GIMBAL	Multi-Axial 4G/5G Adjustment Kit	8"



- Fit 1.9" to 2-7/8" OD masts
- Attach to wood, metal, concrete, or composite poles
- Kits include threaded rods and lag bolts for direct mounting
- Can also be mounted with banding (purchased separately)
- Accommodate flanged pipe extensions (purchased separately)

Lightweight Pole Top Mounts

Part #	Description	Channel Length	Pole Diameter
APT-MAST15	Short Mast Attachment Kit	15"	4" – 12"
APT-MAST21	Long Mast Attachment Kit	21"	4" – 12"
BA206	Stainless Steel Banding, 3/4" x 100' roll		
BU256-25	Stainless Steel Banding Buckles, 25/pk		

Multi-Material Pole Top Mounts

Part #	Description	Channel Length	Pole Diameter
APT-MMA15	Short Mast Attachment Kit	15"	3-1/2" – 9"
APT-MMA21	Long Mast Attachment Kit	21"	3-1/2" – 9"
BA206	Stainless Steel Banding, 3/4" x 100' roll		
BU256-25	Stainless Steel Banding Buckles, 25/pk		

- Provide 10° multi-axial adjustment
- Allow attachment of aftermarket non-conductive uprights 3-1/2" to 4" in width
- Attach to wood, metal, concrete, or composite poles
- Kits include threaded rods and lag bolts for direct mounting
- Can also be mounted with banding (purchased separately)



Concealed Side Arms

Part #	Description	Length
SMA-GIMBAL24	24" Side Mount Arm Gimbal	24"
SMA-GIMBAL36	36" Side Mount Arm Gimbal	36"
BA206	Stainless Steel Banding, 3/4" x 100' roll	
BU256-25	Stainless Steel Banding Buckles, 25/pk	

- Provide 10° multi-axial adjustment
- 24" or 36" versions
- Attach to wood, steel, aluminum, concrete, or composite poles
- Cables can be run inside arm
- Accommodate flanged pipe extensions (purchased separately)
- Fit standard 4G antennas using 3/8" mounting hardware on 4" and 6" bolt circles or 3/4" – 1" center stud
- Kits include threaded rods and lag bolts for direct mounting
- Can also be mounted with banding (purchased separately)



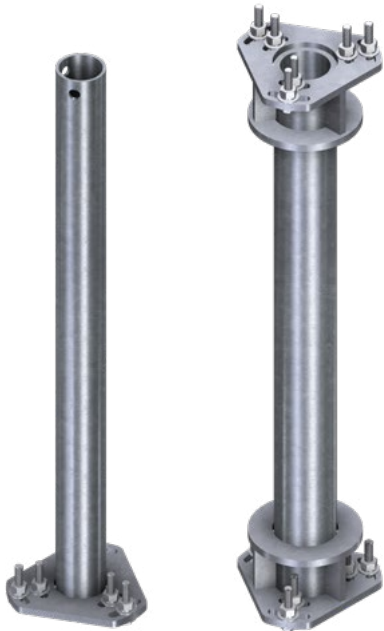
Pipe Side Arms



- 24" or 36" versions
- Attach to wood, steel, aluminum, concrete, or composite poles
- Accommodate flanged pipe extensions (purchased separately)
- Kits include threaded rods and lag bolts for direct mounting
- Can also be mounted with banding (purchased separately)

Part #	Description	Length
SMA-MP24	24" Pipe Side Arm	24"
SMA-MP36	36" Pipe Side Arm	36"
BA206	Stainless Steel Banding, 3/4" x 100' roll	
BU256-25	Stainless Steel Banding Buckles, 25/pk	

Flanged Pipe Extensions



PESF-230

PEDF-3036

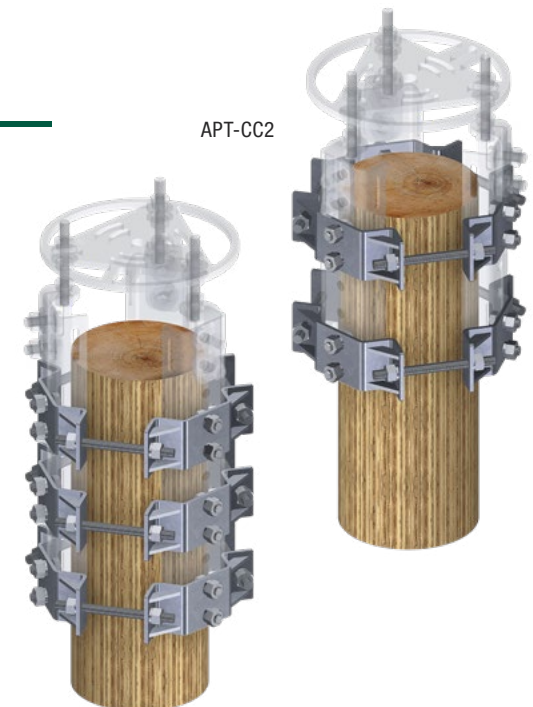
- Use single-flanged extensions with Small Cell Antenna Mount and Basic Mast Attachment Pole Top Mounts
- Use double-flanged extensions with Gimbal Pole Top Mounts
- Single-flanged extensions are 2-3/8" sch 40
- Double-flanged extensions are 2-7/8" sch 80

Part #	Description	Flange
PESF-206	2-3/8" x 6" Pipe Extension	Single
PESF-230	2-3/8" x 30" Pipe Extension	Single
PESF-254	2-3/8" x 54" Pipe Extension	Single
PEDF-3018	2-3/8" x 18" Pipe Extension	Double
PEDF-3030	2-3/8" x 30" Pipe Extension	Double
PEDF-3042	2-3/8" x 42" Pipe Extension	Double

Clamp-On Attachment Kits

Part #	Description	Fits Pole Sizes
APT-CC2	Two-Level Clamp-On Attachment Kit	5" – 15"
APT-CC3	Three-Level Clamp-On Attachment Kit	5" – 15"

- Use to clamp Pole Top Kits to existing poles
- Available in two-level and three-level versions



Banner Camouflage Kits - One-sided

Part #	Description	Banner Size
BPM-18	18" Banner Camouflage Kit	Up to 18"
BPM-24	24" Banner Camouflage Kit	Up to 24"
BPM-30	30" Banner Camouflage Kit	Up to 30"

Part #	Description	Price
DBKSS-4	Decorative Stainless Steel Ball Kit (4 per Kit)	\$176.00
DBKBZ-4	Decorative Bronze Ball Kit (4 per Kit)	\$216.00

- Kits include everything necessary to attach up to three banners on a pole
- Fit poles 3-1/2" to 9-1/2" in diameter
- Equipment mounting solutions purchased separately
- Custom mounting solutions available, please call
- For use with pocket banners (banners purchased separately)
- See website for banner size engineering data



Banners sold separately



Banners sold separately

Banner Camouflage Kits - Two-sided

- Kits include everything necessary to attach up to three banners each on opposite sides of the pole
- Fit poles 3-1/2" to 9-1/2" in diameter
- Equipment mounting solutions purchased separately
- Custom mounting solutions available, please call
- For use with pocket banners (banners purchased separately)
- See website for banner size engineering data

Part #	Description	Banner Size
BPM-D18	18" Dual Banner Camouflage Kit	Up to 18"
BPM-D24	24" Dual Banner Camouflage Kit	Up to 24"
BPM-D30	30" Dual Banner Camouflage Kit	Up to 30"

Part #	Description
DBKSS-8	Decorative Stainless Steel Ball Kit (8 per Kit)
DBKBZ-8	Decorative Bronze Ball Kit (8 per Kit)

THE 2020-2021 WIRELESS SITE COMPONENTS CATALOG

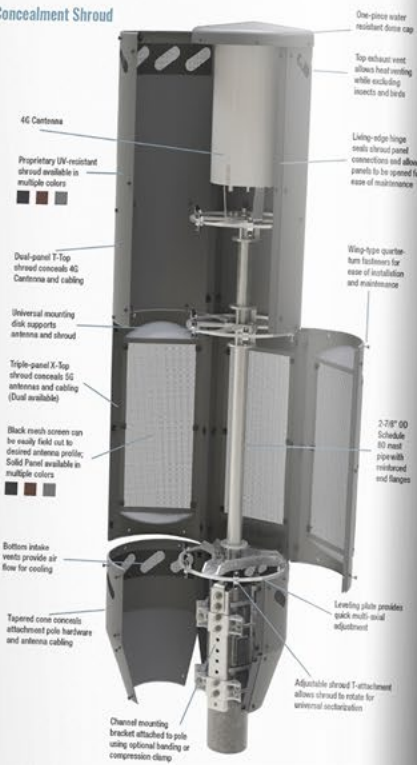
AVAILABLE NOW IN DIGITAL & PRINT FORMATS

This massive new, 340 page catalog is filled with hundreds of new products and is available now. Get your copy today at SitePro1.com/Catalog

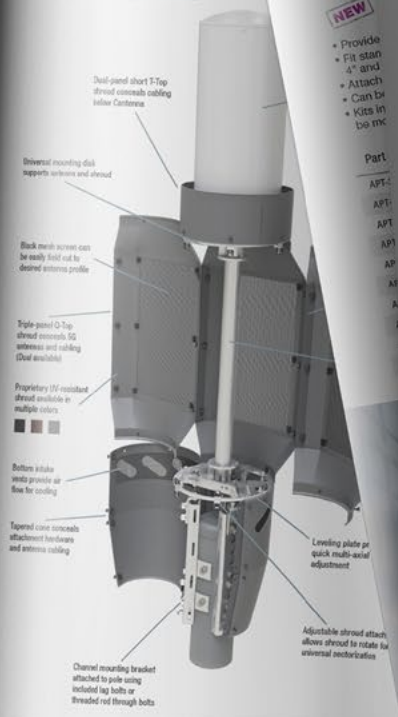


SMALL CELL

4G/5G 22" XT-Top Concealment Shroud



4G/5G 18" QT-Top Open Shroud



SMALL CELL

Pole Side Shrouds

- GR487 certified for:
 - Seismic (Zone 4 environments)
 - High temperature (46° C/ 115° F plus solar loading)
 - Insect intrusion (1/8” or less on all perforations)
- Manufactured from 0.125” aluminum with 12-gauge steel spline
- Robust door hinge with wind latch and hasp for padlock
- Thermally tested to operate in any climate (-40° to +46° C/ -40° to +115° F)
- Fan-less design for minimal maintenance
- Rear cable entry plate and internal ground bar
- Mounts to any type of pole (wood, steel, aluminum, concrete, composite) or wall
- Threaded rod mounting hardware is included; can also be mounted with stainless steel banding (purchased separately)
- For standard Valmont colors replace the “x” in the part number with color code “K” for Black, “B” for Dark Bronze/Brown, or “U” for Utility Gray
- One year warranty

Open View



Closed View



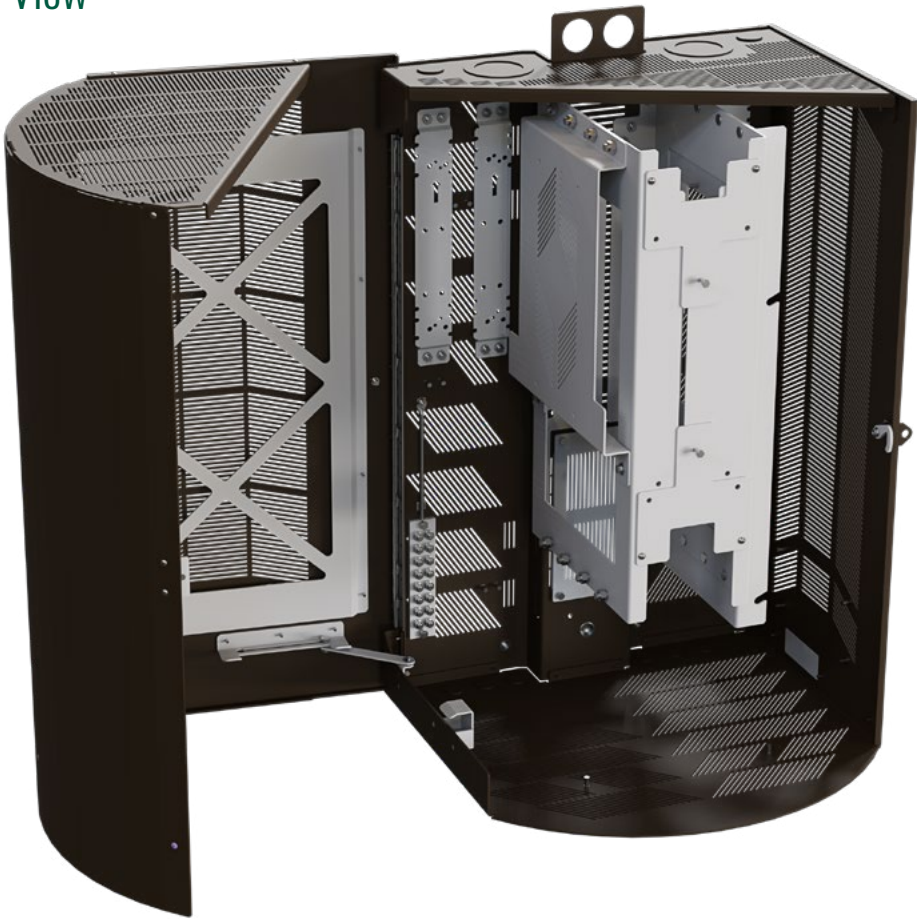
Small Side Shroud (46” x 14” x 14”)

Part #	Description	Weight
S60-461414x	Small Radio Shroud	75 lb
BKT-60461414EW	Ericsson Radio Shroud Bracket Kit	5 lb
BKT-60461414NW	Nokia Radio Shroud Bracket Kit	5 lb
MS60-051107x	7” Pole Mount Standoff Kit	18 lb

Medium Side Shroud (36" x 23" x 22")

Part #	Description	Weight
S60-362322x	Medium Radio Shroud	60 lb
BKT-60362322EW	Ericsson Radio Shroud Bracket Kit	30 lb
BKT-60362322NW	Nokia Radio Shroud Bracket Kit	45 lb
MS60-051107x	7" Pole Mount Standoff Kit	18 lb

Open View

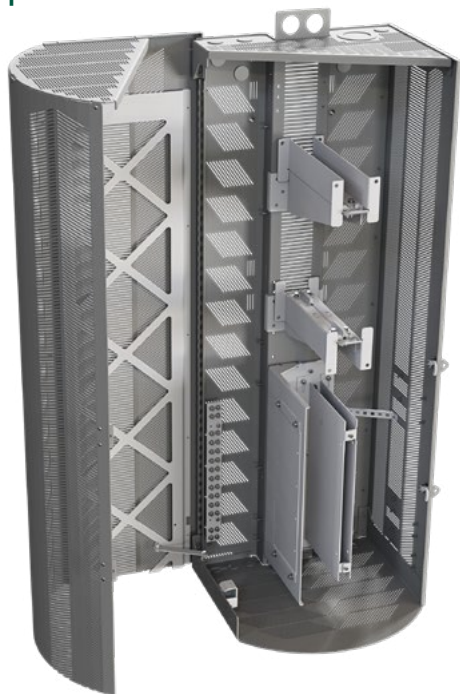


Closed View

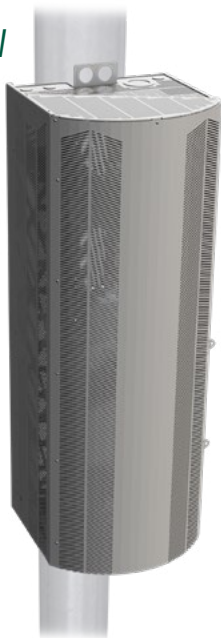
Pole Side Shrouds

- GR487 certified for:
 - Seismic (Zone 4 environments)
 - High temperature (46° C/115° F plus solar loading)
 - Insect intrusion (1/8” or less on all perforations)
- Manufactured from 0.125” aluminum with 12-gauge steel spline
- Robust door hinge with wind latch and hasp for padlock
- Thermally tested to operate in any climate (-40° to +46° C/ -40° to +115° F)
- Fan-less design for minimal maintenance (except XL Ericsson shroud kits)
- XL Ericsson shroud kit includes fan and temperature sensor
- Rear cable entry plate and internal ground bar
- Mounts to any type of pole (wood, steel, aluminum, concrete, composite) or wall
- Threaded rod mounting hardware is included; can also be mounted with stainless steel banding (purchased separately)
- For standard Valmont colors replace the “x” in the part number with color code “K” for Black, “B” for Dark Bronze/Brown, or “U” for Utility Gray
- One year warranty

Open View



Closed View



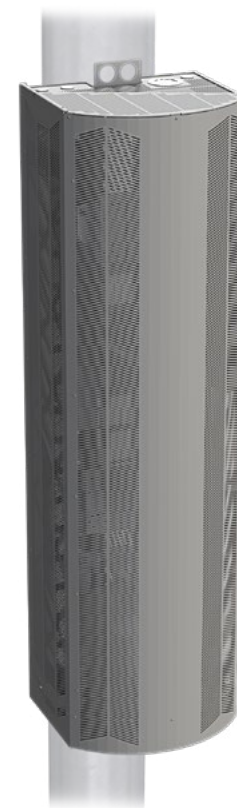
Large Side Shroud (55” x 20” x 19”)

Part #	Description	Weight
S60-552019x	Large Radio Shroud	95 lb
BKT-60552019EW	Ericsson Radio Shroud Bracket Kit	40 lb
BKT-60552019NW	Nokia Radio Shroud Bracket Kit	40 lb
MS60-051107x	7” Pole Mount Standoff Kit	18 lb

X-Large Side Shroud (70" x 20" x 18")

Part #	Description	Weight
S60-702018x	X-Large Radio Shroud	60 lb
BKT-60702018EW	Ericsson Radio Shroud Bracket Kit	50 lb
BKT-60702018NW	Nokia Radio Shroud Bracket Kit	45 lb
MS60-051107x	7" Pole Mount Standoff Kit	18 lb

Open View

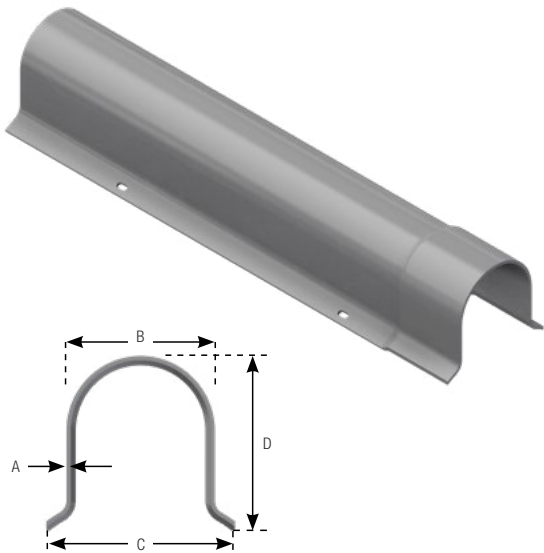


Closed View

U-Riser™ Line Guard

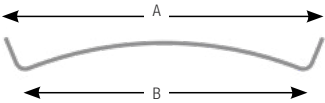
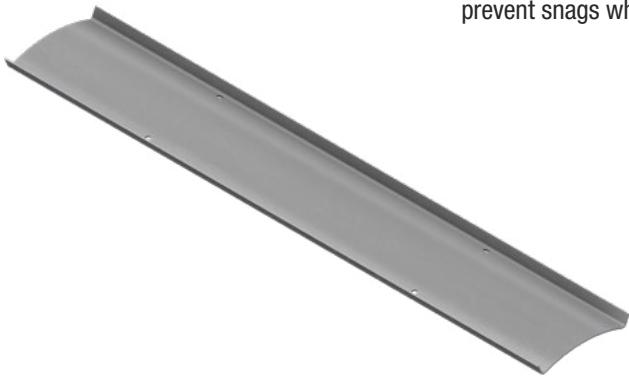
Part #	Description	"A"	"B"	"C"	"D"
12-21010	2" x 10' Riser Line Guard	1/8"	2-3/8"	4-1/2"	2-3/8"
12-31010	3" x 10' Riser Line Guard	1/8"	3-1/2"	6"	3-1/2"
12-41010	4" x 10' Riser Line Guard	1/8"	4-1/2"	6-1/2"	4-1/2"

- Aesthetic way to protect vertical pole cables
- Polyethylene construction is lightweight and impact resistant
- Long service life; resistant to color fading, cracking, and distortion
- Sections have one belled end for easy installation and protection of overlapping end joints
- Pre-drilled lag screw holes



U-Riser™ Back Plates

- Back plates can be used to insulate lines and prevent snags when pulling cables



Part #	Description	"A"	"B"
12-21010BP	2" x 10' Back Plate	2-1/4"	2"
12-31010BP	3" x 10' Back Plate	3-3/8"	3"
12-41010BP	4" x 10' Back Plate	4-3/8"	4"

U-Riser™ Couplers



- Couplers are belled on each end
- Use for repairs or joining custom sections

Part #	Description	"A"	"B"	"C"	"D"
12-2XXCPLR	2" x 12" Line Guard Coupler	1/8"	2-3/8"	4-1/2"	2-3/8"
12-3XXCPLR	3" x 12" Line Guard Coupler	1/8"	3-1/2"	6"	3-1/2"
12-4XXCPLR	4" x 12" Line Guard Coupler	1/8"	4-1/2"	6-1/2"	4-1/2"

U-Riser™ Pole Adapter and Ground Boot

Part #	Description	Length
12-234ADPTR	2"-4" Pole Adapter	9"
12-23456BOOT	2"-6" Ground Boot	18"

- Universal Adapter joins 2" to 4" riser to different size riser
- Boot accepts 2" to 4" riser for transition to buried conduit
- Pole adapter and Ground boot can be cut to size



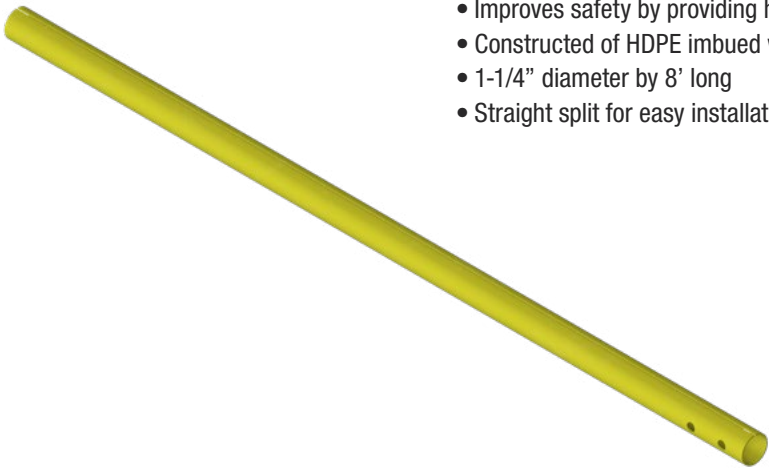
U-Riser™ Fastener Kits

Part #	Description	Finish	UOM
LB14114-20	1/4" x 1-1/4" Lag Bolt	Galvanized	Pkg of 20
LB14212-20	1/4" x 2-1/2" Lag Bolt	Galvanized	Pkg of 20
SSLB14114-20	1/4" x 1-1/4" Lag Bolt	Stainless	Pkg of 20
SSLB14212-20	1/4" x 2-1/2" Lag Bolt	Stainless	Pkg of 20

- Use to attached Riser Line Guards to wood poles
- Available in galvanized or stainless steel
- Packages of 20



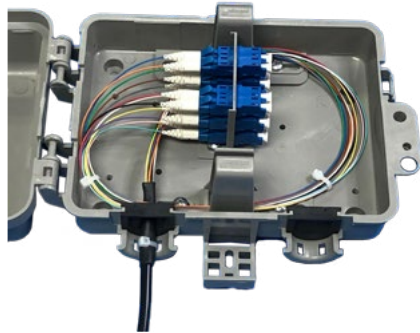
Guy Wire Marker



- Improves safety by providing high visibility
- Constructed of HDPE imbued with UV stabilizers
- 1-1/4" diameter by 8' long
- Straight split for easy installation

Part #	Description	Color
12-08GWMYC	Guy Wire Marker with Zip Ties	OSHA Safety yellow

Outdoor Rated Fiber Demarcation Panels



EN-105SLCUR

- UL listed NEMA 4X gray PVC plastic enclosure rated -40° to 70°C (-40° to 158° F)
- 3 sizes (small, medium, large)
- Hinged door w/pad lockable hasp
- LC-LC APC & LC-LC UPC fiber terminations (others available upon request)
- Large panels with and without service dividers
- 31' standard cable length



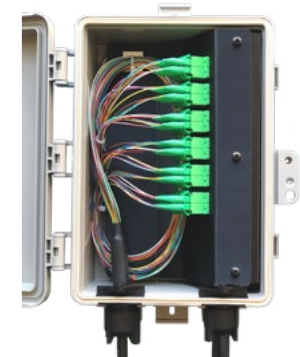
EN-10LD24LCA



EN-10LD48LCA

Outdoor Rated Fiber Demarcation Panels (No Service Divider)

Part #	Description	Fiber Port Count	Fiber Connector Type
EN-10SLCAR	Small 6.7"x7.9"x2.9" 12 Port (LC-APC-LC APC) Fiber Panel - Rubber Cable Grommet	12	LC-LC APC
EN-10SLCUR	Small 6.7"x7.9"x2.9" 12 Port (LC-UPC-LC UPC) Fiber Panel - Rubber Cable Grommet	12	LC-LC UPC
EN-10MLCAR	Medium 10"x8"x3.9" 24 Port (LC-APC-LC APC) Fiber Panel - Rubber Cable Grommet	24	LC-LC APC
EN-10MLCUR	Medium 10"x8"x3.9" 24 Port (LC-UPC-LC UPC) Fiber Panel - Rubber Cable Grommet	24	LC-LC UPC
EN-10LLCAR	Large 12.2"x8.6"x3.9" 48 Port (LC-APC-LC APC) Fiber Panel - Rubber Cable Grommet	48	LC-LC APC
EN-10LLCUR	Large 12.2"x8.6"x3.9" 48 Port (LC-UPC-LC UPC) Fiber Panel - Rubber Cable Grommet	48	LC-LC UPC



Outdoor Rated Fiber Demarcation Panels (With Service Divider)

Part #	Description	Fiber Port Count	Fiber Connector Type
EN-10LD24LCA	Large 12.2"x8.6"x3.9" 24 Port (LC-APC-LC APC) Fiber Panel - Rubber Cable Grommet & Service Divider	24	LC-LC APC
EN-10LD48LCA	Large 12.2"x8.6"x3.9" 48 Port (LC-APC-LC APC) Fiber Panel - Rubber Cable Grommet & Service Divider	48	LC-LC APC
EN-10LD24LCU	Large 12.2"x8.6"x3.9" 24 Port (LC-UPC-LC UPC) Fiber Panel - Rubber Cable Grommet & Service Divider	24	LC-LC UPC
EN-10LD48LCU	Large 12.2"x8.6"x3.9" 48 Port (LC-UPC-LC UPC) Fiber Panel - Rubber Cable Grommet & Service Divider	48	LC-LC UPC



EN-10MLCUR

Outdoor Rated IP68 Fiber Distribution Panels with Pre Terminated Fiber Cable



- UL listed NEMA 4X gray PVC plastic enclosure rated -40° to 70°C (-40° to 158° F)
- 2 sizes (small 4 Port, large 5 Port)
- LC-LC UPC/ACP fiber terminations (others available upon request)
- Senko IP-LC IP68 fiber bulk head connectors (mating male connector IP-LC-CSM)
- Corning Freedom One fiber cable - 31' standard cable length w/ 1' breakout cable (others available upon request)
- Factory terminated and tested connectors
- Small 4 port enclosure (3.15" x 7.09" x 3.35")
- Large 5 port enclosure (5.91" x 5.91" x 3.94")

Part #	Description	Fiber Port Count	Fiber Connector Type (Enclosure Side)	Fiber Connector Type (Cable End)
EN-20SLCUA372	Small 4 port fiber enclosure w/ 31' pre-terminated 5 pair cable (LC-UPC to LC-ACP)	10	LC-UPC	LC-APC
EN-20SLCUU372	Small 4 port fiber enclosure w/ 31' pre-terminated 5 pair cable (LC-UPC to LC-UPC)	10	LC-UPC	LC-UPC
EN-20SLCAA372	Small 4 port fiber enclosure w/ 31' pre-terminated 5 pair cable (LC-APC to LC-APC)	10	LC-APC	LC-APC
EN-20LLCUA372	Large 5 port fiber enclosure w/ 31' pre-terminated 6 pair cable (LC-UPC to LC-APC)	12	LC-UPC	LC-APC
EN-20LLCUU372	Large 5 port fiber enclosure w/ 31' pre-terminated 6 pair cable (LC-UPC to LC-UPC)	12	LC-UPC	LC-UPC
EN-20LLCAA372	Large 5 port fiber enclosure w/ 31' pre-terminated 6 pair cable (LC-APC to LC-APC)	12	LC-APC	LC-APC

Raycap Outdoor Rated Load Centers



EP-RSCAC-7239

- UL 67 service entrance rated
- NEMA 4/4X steel or polycarbonate enclosure with hinged door
- -40° to 80° C (-40° to 176° F)
- 30A to 100A, 120V or 120v/240V with main disconnect breaker
- Built in Class 1 60kA Strikesorb surge protection
- Universal mounting bracket included
- Additional circuit breakers available (see below)



EP-RSCAC-7239

Part #	Description	Dimensions	Voltage	Main Disconnect
EP-RSCAC-7239	Raycap RSCAC-7239-P-240 steel load center (One 15A Breaker Included), EKM Smart Meter, 15A GFCI Courtesy Outlet	17.2" x 9.6" x 5.5"	100A 120/240V	100A
EP-RSCAC-1333	Raycap RSCAC-1333-P-240 Polycarbonate load center (Order Breaker separately)	10.4" x 9.4" x 5"	100A 120/240V	60A
EP-RSCAC-9457	Raycap RSCAC-9457-HP-120-D (Two 16A & two 10A Breakers Included) Polycarbonate load center	10.4" x 9.4" x 5"	60A 120V	60A
EP-RSCAC-6533	Raycap RSCAC-6533-P-120-D (Four 7A Breakers Included)	10.4" x 9.4" x 5"	30A 120V	30 A
EP-RSCAC-9556	Raycap RSCAC-9556-P-240 (Order Breakers Separately) Polycarbonate load center	12.4" x 9.4" x 5.7"	100A 120/240V	100A

Circuit Breakers

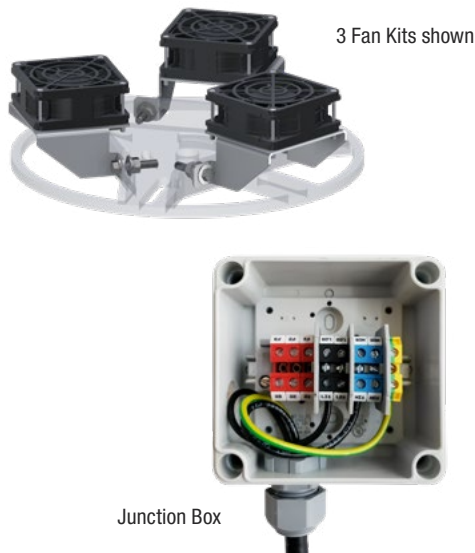
Part #	Description
EP-CBDIN-7A	120V 7A Single Pole 18mm DIN Rail Breaker (6533 & 9457 Panels)
EP-CBDIN-10A	120V 10A Single Pole 18mm DIN Rail Breaker (6533 & 9457 Panels)
EP-CBDIN-16A	120V 16A Single Pole 18mm DIN Rail Breaker (6533 & 9457 Panels)
EP-CBSQD-T15A	120V 15A/15A Tandem Circuit Breaker (1333, 7239, 9556 Panels)
EP-CBSQD-T50A	120V 20A/20A Tandem Circuit Breaker (1333, 7239, 9556 Panels)



Top Shroud AC Fan Kits

Part #	Description	Temperature (On/Off)
FAN-AC100	Low Temp. AC Fan Kit (Fan 1)	100° F/ 85° F
FAN-AC110	Medium Temp. AC Fan Kit (Fan 2)	110° F/ 95° F
FAN-AC120	High Temp. AC Fan Kit (Fan 3)	120° F/ 105° F
AC-FAN-JBOX	Junction Box (3.70" x 3.70" x 2.24")	

- Attach to APT Leveling Plate (18" or 22" Shroud)
- Fans start/stop at listed temperatures
- Fan Kits include 1 Fan Unit, 1 Temperature Sensor, and Mounting Hardware (recommended use: one of each fan kit in a 3-fan system)
- Junction Box includes IP 66 enclosure, cable glands, DIN rail connector assembly, and mounting hardware



Junction Box

NG2 48V DC Fan Controller



NG2 Controller

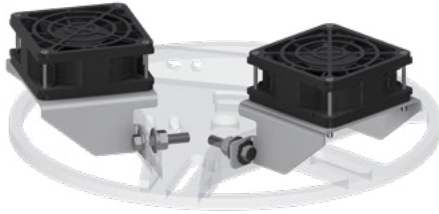
- Control up to 5 individual cooling zones (total 11 fans)
- Fan speed control based on temperature with fan redundancy and emergency fan modes
- 48V DC powered (requires separate power supply or input)
- -40° to 65° C (-40° to 149° F); IP68, UL Listed
- Support for 4 external environmental alarms
- Hot or cold and wet or dry environments

Part #	Description
151082	NG2 DC Powered Fan Controller (8.5" x 7.28" x 5.19")



NG2 Controller - open

Top Shroud DC Fan Kit



- Attach to APT Leveling Plate (18" or 22" Shroud)
- Requires DC Fan Controller
- Fan Kits include 1 Fan Unit and Mounting Hardware
- Wiring harness includes pre-terminated connectors and temp. sensors



Part #	Description
FAN-DC	DC Fan Kit
C4600-020-995	20ft dual fan wiring harness
C4600-035-995	35ft dual fan wiring harness
C4601-020-995	20ft triple fan wiring harness
C4601-035-995	35ft triple fan wiring harness

Pipe-to-Pipe Clamp Sets

Part #	Pipe Size	Clamp Thickness	Threaded Rod	Kit Quantity
ACP10K	1-1/2" - 3-1/2"	1/4"	1/2" x 10"	Kit of 2
SCP10K	1-1/2" - 3-1/2"	1/2"	1/2" x 10"	Kit of 2
DCP12K	1-1/2" - 5"	1/2"	5/8" x 12"	Kit of 2
DCP18K	1-1/2" - 5"	1/2"	5/8" x 18"	Kit of 2

- Used for attaching pipes in parallel orientation
- All hardware included
- Hot-dip galvanized



Kit includes 2 of the clamp set shown



Kit includes 2 of the clamp set shown

- Used for attaching pipes in parallel orientation
- All hardware included
- Hot-dip galvanized

Welded Pipe-to-Pipe Clamp Set

Part #	Pipe Size	Clamp Thickness	Threaded Rod	Kit Quantity
SCP10W	1-1/2" - 3-1/2"	1/2"	1/2" x 10"	Kit of 2

Universal Pipe-to-Pipe Clamp Sets

Part #	Pipe Sizes	Angle Sizes	Threaded Rods	Kit Quantity
UPC1	1-1/4" - 4-1/2"	1-1/2" - 3"	(4) 1/2" x 20"	Kit of 2

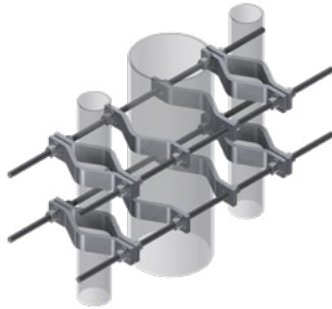
Universal Adapter Clamp Sets

Part #	Smaller Pipe Smaller Angle	Larger Pipe Larger Angle	Threaded Rods	Kit Quantity
UPC2	1-1/4" - 4-1/2" 1-1/2" - 3"	1-1/4" - 10" 3" - 7"	(8) 1/2" x 15"	Kit of 2

- Universal design allows attachment of pipes to pipes or angles
- Wide operating range insures that you will always have the right clamp set
- Taper adjustable
- Kits include upper and lower clamp sets



Three-Way Pipe-to-Pipe Clamp Sets



3WPP-MCP

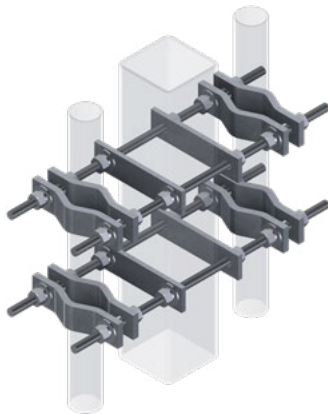
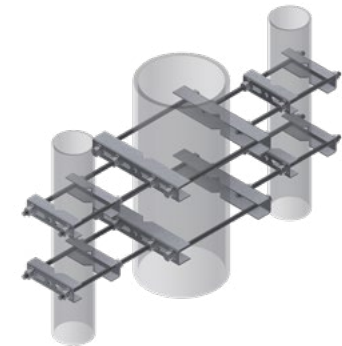
- Used for attaching pipes in parallel fashion
- All hardware included
- Hot-dip galvanized

Part #	Pipe Size	Clamp Thickness	Threaded Rod	Kit Quantity
3WPP-DCP	1-1/2" - 5"	1/2"	5/8" x 24"	Kit of 2
3WPP-MCP	1-1/2" - 8-5/8"	1/2"	5/8" x 36"	Kit of 2

Three-Way Universal Pipe-to-Pipe Clamp Set

Part #	Side Pipes OD	Center Pipe OD	Threaded Rod	Kit Quantity
3WPP-UPC	1-1/4" - 4-1/2"	1-1/4" - 10" Pipe	1/2" x 15"	Kit of 2

- Used for attaching pipes in parallel fashion
- Accommodates pipe or square tube in center
- All hardware included
- Hot-dip galvanized



- Used for attaching pipes to square tube in parallel fashion
- All hardware included
- Hot-dip galvanized

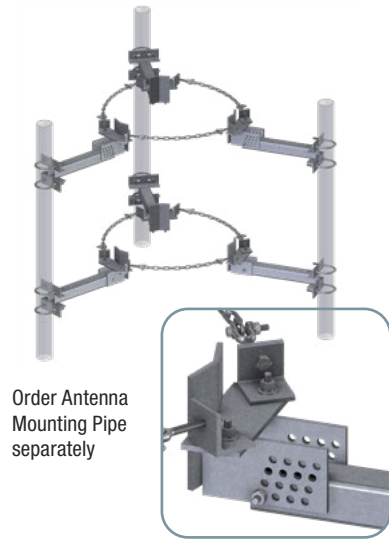
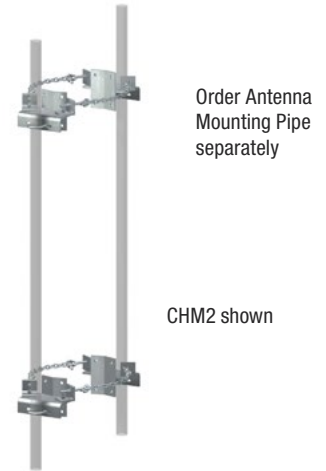
Three-Way Pipe-to-Square Clamp Set

Part #	Side Pipes OD	Square Tube Size	Clamp Thickness	Threaded Rod	Kit Quantity
3WPP2	1-1/2" - 5"	1-1/2" - 5"	1/2"	5/8" x 24"	Kit of 2

Chain Mounts

Part #	Description	Range	Weight
CHM1	Single Sector	5" - 36"	52 lb
CHM2	Double Sector	5" - 36"	93 lb
CHM3	Triple Sector	6-1/2" - 36"	145 lb

- Fit polygon or round poles
- Includes U-Bolts for mounting 2-3/8" or 4-1/2" OD Pipes
- Hot-dip galvanized
- Purchase U-Bolts separately if mounting 2-7/8" or 3-1/2" Pipes
- Order Antenna Mounting Pipes separately (sold separately)



- Fit polygon or round poles
- Simple taper adjustment allows for up to 6° of taper in 3/4° increments
- Includes U-Bolts for mounting 2-3/8" or 4-1/2" OD Pipes
- Hot-dip galvanized
- Purchase U-Bolts separately if mounting 2-7/8" or 3-1/2" Pipes
- Order Antenna Mounting Pipes separately

Taper Adjustable Chain Mounts

Part #	Description	Standoff	Range	Weight
TCHM1	Single Sector	1'	5" - 36"	80 lb
TCHM1-L	Single Sector	2'	5" - 36"	96 lb
TCHM2	Double Sector	1'	5" - 36"	150 lb
TCHM2-L	Double Sector	2'	5" - 36"	180 lb
TCHM3	Triple Sector	1'	6-1/2" - 36"	225 lb
TCHM3-L	Triple Sector	2'	6-1/2" - 36"	270 lb

Chain Mount for GPS Antenna

Part #	Description	Weight
CHGPS	GPS Mount	23 lb

- Fits polygon or round poles 6-1/2" - 36"
- 2-3/8" x 9" mounting area for supporting GPS or other small antennas
- Stands 2' off pole





Universal Tri-Sector Mount Kits

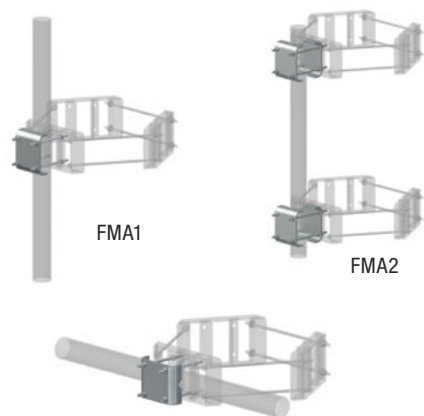
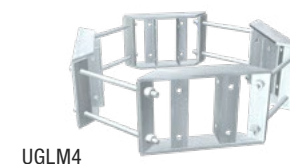
- Allow attachment of three panel antennas to a single pipe mast
- Kits includes two brackets with hardware for attaching 2-3/8", 2-7/8", and 3-1/2" OD Antenna Mounting Pipes (sold separately)

Part #	Description	Weight
UTSM	Universal Tri-Sector Mount Kit, 2-7/8" to 6-5/8" OD	36 lb
UTSM-L	Universal Tri-Sector Mount Kit, 6" to 10" OD	51 lb NEW

Lightweight Ring Mounts

Part #	Type	Pole Sizes	Weight
UGLM	Lightweight Tri-Bracket	10-1/2" - 28"	89 lb
LP-42	Large-Pole Adapter Kit	28" - 42"	71 lb
LP-6	Small-Pole Adapter Kit	6-5/8" - 10-1/2"	33 lb
UGLM4	Lightweight Quad Bracket	10-1/2" - 42"	111 lb
QP-6	Small-Pole Adapter Kit	6-5/8" - 10-1/2"	46 lb

- Easy to use Lightweight Ring Mounts
- Perfect for applications using two antennas per sector
- 6" x 6" bolt pattern
- Large and Small Pole Adapter Kits also available
- Contact us for load and engineering data



FMA1 on our UGLM with horizontal pipe

- Allows attachment of vertical Pipe to Ring Mounts
- Fit our standard or lightweight Ring Mounts
- FMA1 can be used to mount a Pipe horizontally or vertically on our UGLM Lightweight Ring Mount
- Kits include plates and all hardware
- Order Antenna Mounting Pipes separately

Flush Mount Adapter Kits

Part #	Description	Pipe Size Range	Weight
FMA1	1 Plate and Hardware	1-1/2" - 4-1/2"	14 lb
FMA2	4 Plates and Hardware	1-1/2" - 4-1/2"	26 lb
FMA1-2	2 Plates and Hardware	1-1/2" - 4-1/2"	57 lb

GRCS Pole Mounted Capstan Kit

Part #	Description	Weight
GR1000U	GRCS Pole Mounted Capstan Kit	80 lb
GR1014PWD	Replacement Winch Driver Bit	0.1 lb



- Two-speed self-tailing capstan winch; 4:1 and 10:1 gear ratios
- Winch straps onto base of pole
- Use for raising or lowering equipment on sites with limited access
- Can be operated manually or with a 1/2" drill
- Complete kit includes pole mount, winch, winch handle, drill adapter, and tensioning bar
- 2,000 lb working load limit



GRCS Truck Mount Adapter Assembly



- Allows the GRCS Capstan Kit to be mounted to a truck hitch
- Complete kit includes tube assembly and winch receiver plate

Part #	Description	Weight
GR1101TA	GRCS Truck Mount Adapter Kit	40 lb

THE COUNTDOWN BEGINS

Our new Safety Catalog is just a few months away.
A massive inventory of equipment, new additions, surprises and more.



EARLY 2020

FEARLESS™

GEAR FOR THE EXPERT CLIMBER



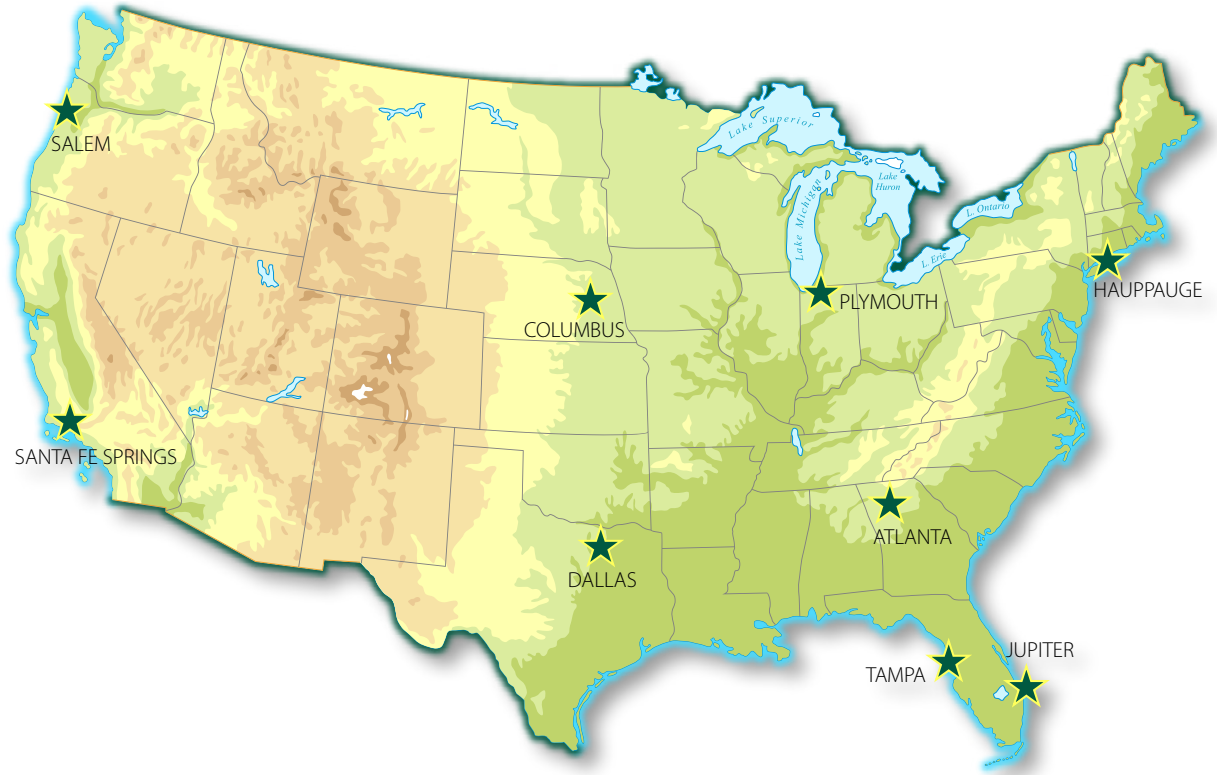
- Harnesses
- Helmets
- Lanyards
- Rigging
- Rope
- Apparel

...and much more

NOW AVAILABLE AT WWW.FEARLESS.ONE



A **valmont**  COMPANY



Nine Convenient Locations

NEW YORK

Valmont Site Pro 1, Inc.
15 Oser Ave
Hauppauge, NY 11788
Ph: 1-888-438-7761
Ph: 1-631-231-7660

GEORGIA

Valmont Site Pro 1, Inc.
4100 Westpark Dr. SW, Suite C
Atlanta, GA 30336
Ph: 1-866-901-0603
Ph: 1-404-494-9000

CALIFORNIA

Valmont Site Pro 1, Inc.
12661 Corral Place
Santa Fe Springs, CA 90670
Ph: 1-888-776-1937
Ph: 1-562-906-0000

TEXAS

Valmont Site Pro 1, Inc.
2045 Westgate Dr, Suite 110
Carrollton, TX 75006
Ph: 1-888-809-5151
Ph: 1-972-242-0852

NEBRASKA

Valmont Site Pro 1, Inc.
1600 E 29th Ave,
Columbus, NE 68601
Ph: 1-402-562-1750

INDIANA

Valmont Site Pro 1, Inc.
1545 Pidco Dr
Plymouth, IN 46563
Ph: 1-888-753-7446
Ph: 1-574-936-4221

OREGON

Valmont Site Pro 1, Inc.
3573 25th Street SE
Salem, OR 97302
Ph: 1-888-880-9191
Ph: 1-503-316-2057

WEST FLORIDA

Valmont Site Pro 1, Inc.
5122 Joanne Kearney Blvd.
Tampa, OR 33619
Ph: 1-844-278-6371
Ph: 1-813-622-8620

SOUTH FLORIDA

Connect-It Wireless
33 Commerce Way
Jupiter, FL 33458
Ph: 1-866-781-1300
Ph: 1-561-743-8141

Valmont Site Pro 1
15 Oser Avenue
Hauppauge, NY 11788

New York
888-438-7761

Atlanta
866-901-0603

California
888-776-1937

Oregon
888-880-9191

Texas
888-809-5151

Indiana
888-753-7446

Nebraska
402-562-1750

West Florida
844-278-6371

South Florida
866-781-1300



A **valmont**  COMPANY

Visit SitePro1.com to shop instantly.