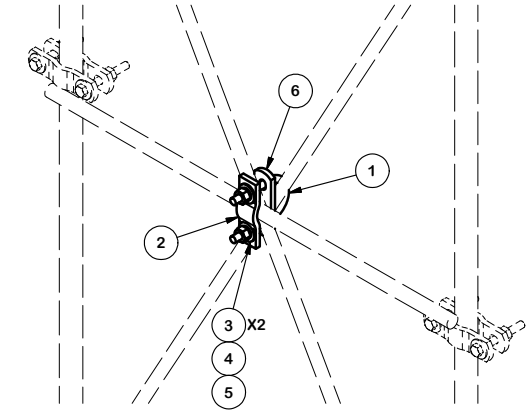
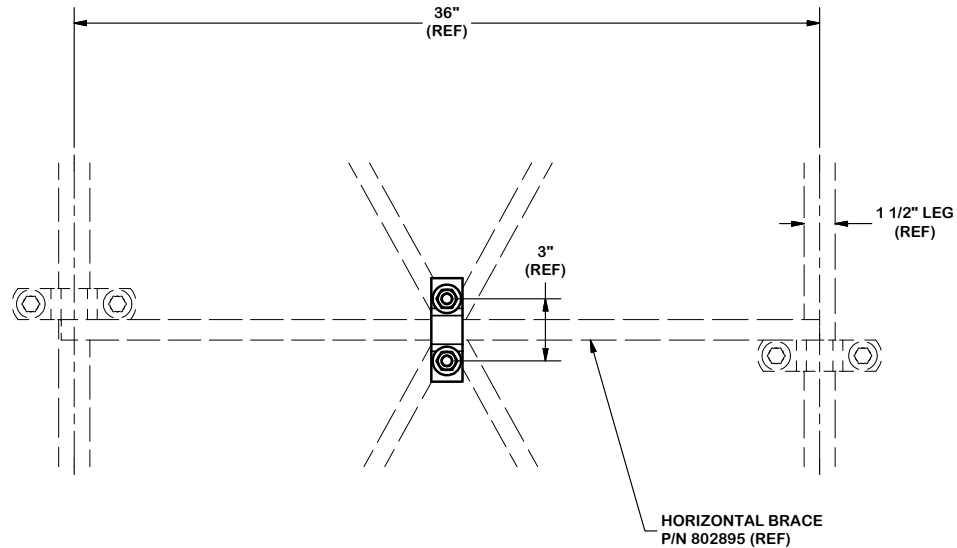
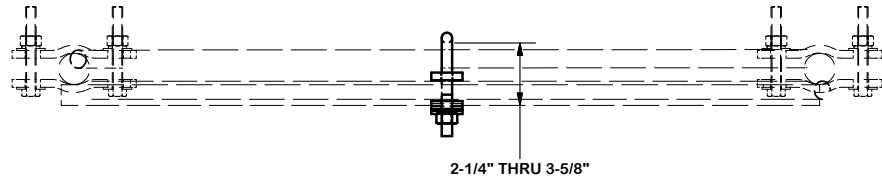


PARTS LIST						
ITEM	QTY	PART NO.	PART DESCRIPTION	LENGTH	UNIT WT.	NET WT
1	1	X-UB1212	1/2" X 2-1/2" X 4-1/2" X 2" U-BOLT (HDG.)		0.81	0.81
2	1	X-116165	3" V-CLAMP 3/8" THICK		1.03	2.06
3	4	G12FW	1/2" HDG USS FLATWASHER		0.03	0.09
4	2	G12LW	1/2" HDG LOCKWASHER		0.01	0.02
5	2	G12NUT	1/2" HDG HEAVY 2H HEX NUT		0.07	0.14
6	1	116139	CLAMP (3" FLAT CLAMP)		0.69	0.69
					TOTAL WT. #	3.81



REV	DESCRIPTION OF REVISIONS	CPD	BY	DATE
B	REPLACED SECOND V-CLAMP WITH FLAT CLAMP		CEK	8/5/2013
A	ADDED SECOND V-CLAMP	5386	KC8	1/15/2013
REVISION HISTORY				

TOLERANCE NOTES

TOLERANCES ON DIMENSIONS, UNLESS OTHERWISE NOTED ARE:
 SAWED, SHEARED AND GAS CUT EDGES ($\pm 0.030"$)
 DRILLED AND GAS CUT HOLES ($\pm 0.030"$) - NO CONING OF HOLES
 LASER CUT EDGES AND HOLES ($\pm 0.010"$) - NO CONING OF HOLES
 BENDS ARE $\pm 1/2$ DEGREE
 ALL OTHER MACHINING ($\pm 0.030"$)
 ALL OTHER ASSEMBLY ($\pm 0.060"$)

PROPRIETARY NOTE:
 THE DATA AND TECHNIQUES CONTAINED IN THIS DRAWING ARE PROPRIETARY INFORMATION OF VALMONT INDUSTRIES AND CONSIDERED A TRADE SECRET. ANY USE OR DISCLOSURE WITHOUT THE CONSENT OF VALMONT INDUSTRIES IS STRICTLY PROHIBITED.

DESCRIPTION	
CENTER CONNECTION U-BOLT WITH V-CLAMP CONNECTION ASSY	
CPD NO. 5386	DRAWN BY KC8 10/25/2012
CLASS 81	SUB 02
DRAWING USAGE SHOP	ENG. APPROVAL 3RD PARTY CHECKED BY BMC 1/15/2013

 A valmont COMPANY	Locations: New York, NY Atlanta, GA Los Angeles, CA Plymouth, IN Salem, OR Dallas, TX
	Engineering Support Team: 1-888-753-7446
PART NO.	245978
DWG. NO.	245978