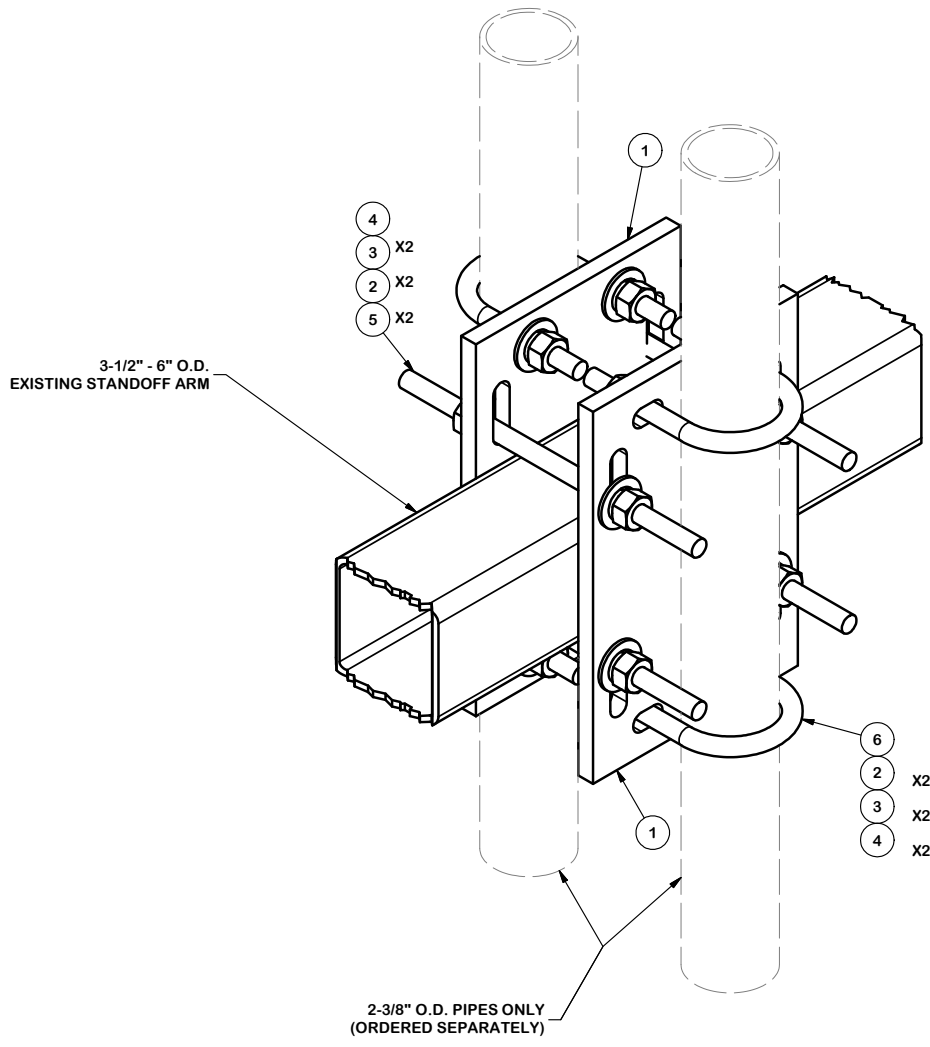


PARTS LIST						
ITEM	QTY	PART NO.	PART DESCRIPTION	LENGTH	UNIT WT.	NET WT.
1	2	SCX6	CROSSOVER PLATE	11 in	10.62	21.23
2	16	G12FW	1/2" HDG USS FLATWASHER		0.03	0.54
3	16	G12LW	1/2" HDG LOCKWASHER		0.01	0.22
4	16	G12NUT	1/2" HDG HEAVY 2H HEX NUT		0.07	1.14
5	4	G12R-10	1/2" x 10" THREADED ROD (HDG.)		3.23	12.91
6	4	X-UB1212	1/2" X 2-1/2" X 4-1/2" X 2" U-BOLT (HDG.)		0.66	2.63
					TOTAL WT. #	38.67



**TOLERANCE NOTES**  
**TOLERANCES ON DIMENSIONS, UNLESS OTHERWISE NOTED ARE:**  
**SAWED, SHEARED AND GAS CUT EDGES ( $\pm 0.030$ " )**  
**DRILLED AND GAS CUT HOLES ( $\pm 0.030$ " ) - NO CONING OF HOLES**  
**LASER CUT EDGES AND HOLES ( $\pm 0.010$ " ) - NO CONING OF HOLES**  
**BENDS ARE  $\pm 1/2$  DEGREE**  
**ALL OTHER MACHINING ( $\pm 0.030$ " )**  
**ALL OTHER ASSEMBLY ( $\pm 0.060$ " )**

PROPRIETARY NOTE:  
 THE DATA AND TECHNIQUES CONTAINED IN THIS DRAWING ARE PROPRIETARY INFORMATION OF VALMONT INDUSTRIES AND CONSIDERED A TRADE SECRET. ANY USE OR DISCLOSURE WITHOUT THE CONSENT OF VALMONT INDUSTRIES IS STRICTLY PROHIBITED.

DESCRIPTION		BACK TO BACK PIPE MOUNT 2-3/8" PIPES	
CPD NO.	DRAWN BY	ENG. APPROVAL	
	CEK 4/26/2013		
CLASS	SUB	DRAWING USAGE	CHECKED BY
81	03	CUSTOMER	BMC 4/26/2013

 A valmont COMPANY	Locations: New York, NY Atlanta, GA Los Angeles, CA Plymouth, IN Salem, OR Dallas, TX
	Engineering Support Team: 1-888-753-7446
PART NO.	BBPM-K3
DWG. NO.	BBPM-K3