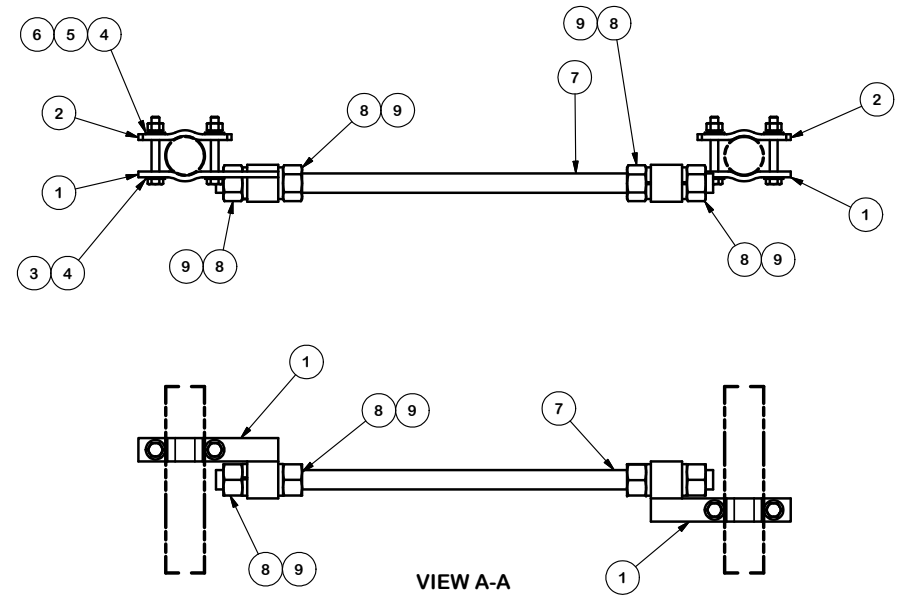


PARTS LIST						
ITEM	QTY	PART NO.	PART DESCRIPTION	LENGTH	UNIT WT.	NET WT.
1	6	X-BOB114	1-1/4" BRACKET WELDMENT		1.57	9.42
2	6	X-100064	CLAMP (S) (4" V-CLAMP) GALVANIZED		0.91	5.48
3	12	G1204	1/2" UNC HEX BOLT (GRADE 5)	4	0.29	3.45
4	24	G12FW	1/2" FLAT WASHER		0.03	0.69
5	12	G12LW	1/2" LOCK WASHER		0.01	0.16
6	12	G12NUT	1/2" UNC HEX NUT (A563)		0.07	0.86
7	3	G114R-60-B7	1-1/4" THREADED ROD (HDG.) X 60"	FIELD CUT	20.92	62.76
8	12	G114NUT	1 1/4" UNC HEX NUT (A563)		0.87	10.39
9	12	G114LW	1 1/4" LOCK WASHER		0.17	2.10
					TOTAL WT. #	95.31

NOTE: FLAT WASHERS ARE REQUIRED AT EVERY SLOTTED HOLE.
(UNDER BOLT HEAD AND UNDER LOCK WASHER)



TOLERANCE NOTES

TOLERANCES ON DIMENSIONS, UNLESS OTHERWISE NOTED ARE:
 SAWED, SHEARED AND GAS CUT EDGES ($\pm 0.030"$)
 DRILLED AND GAS CUT HOLES ($\pm 0.030"$) - NO CONING OF HOLES
 LASER CUT EDGES AND HOLES ($\pm 0.010"$) - NO CONING OF HOLES
 BENDS ARE $\pm 1/2$ DEGREE
 ALL OTHER MACHINING ($\pm 0.030"$)
 ALL OTHER ASSEMBLY ($\pm 0.060"$)

PROPRIETARY NOTE:
 THE DATA AND TECHNIQUES CONTAINED IN THIS DRAWING ARE PROPRIETARY INFORMATION OF VALMONT INDUSTRIES AND CONSIDERED A TRADE SECRET. ANY USE OR DISCLOSURE WITHOUT THE CONSENT OF VALMONT INDUSTRIES IS STRICTLY PROHIBITED.

DESCRIPTION
 ADJ BOLT-ON-BRACE ASSEMBLY
 1-1/4" THRD ROD

CPD NO.	DRAWN BY	ENG. APPROVAL
CLASS	DRAWING USAGE	CHECKED BY
81	02	CUSTOMER
		BMC 12/1/2015

SITE PRO 1
 Engineering Support Team:
 1-888-753-7446
 Locations:
 New York, NY
 Atlanta, GA
 Los Angeles, CA
 Plymouth, IN
 Salem, OR
 Dallas, TX

PART NO.	BOB114
DWG. NO.	BOB114