

LOADING CONSIDERED:

DEAD LOADS: SELF-WEIGHT.

LIVE LOADS: AS PER IBC 2006 / ASCE 7-05 CODE REQUIREMENTS-

200 Psf UNIFORM / 490 #/ft ACROSS BARS IN BAR GRATING.

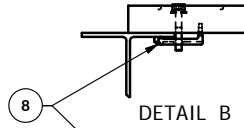
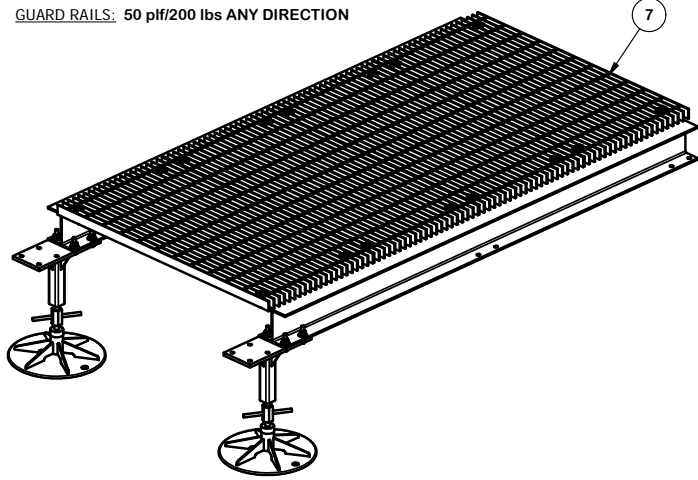
WIND LOADS: AS PER IBC 2006 / ASCE 7-05 / TIA-222-G STANDARD CODE REQUIREMENTS-

40 Psf (FROM 120 Mph PER IBC2006 / ASCE 7-05 METHOD).

(4) MAX. EXPOSED CABINETS WITH DIMENSION OF UP TO 60" WIDE X 80" TALL.

SNOW LOAD: 90 psf UNIFORM

GUARD RAILS: 50 plf/200 lbs ANY DIRECTION

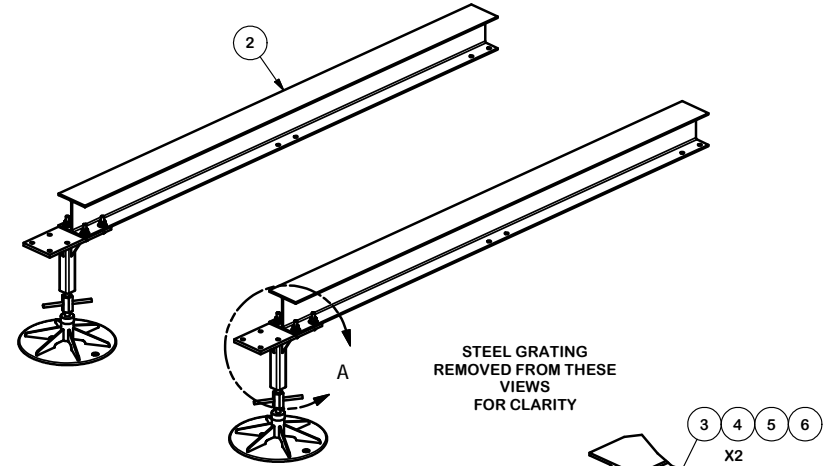


DETAIL B



DETAIL C

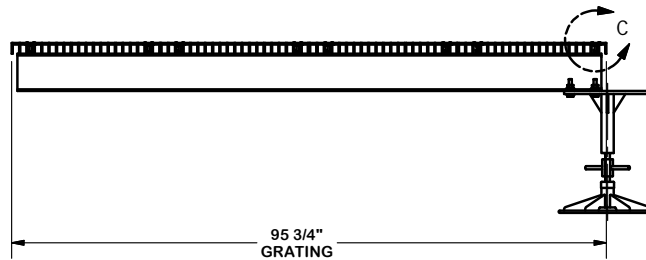
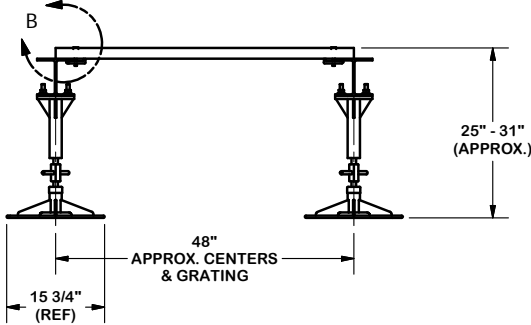
PARTS LIST						
ITEM	QTY	PART NO.	PART DESCRIPTION	LENGTH	UNIT WT.	NET WT.
1	2	PAD-S	ADJUSTABLE STEEL PAD FOR BTS PLATFORMS		50.00	100.00
2	2	X-151588	W6 X 15# WIDE FLANGE (Fy=35 Ksi Min)		123.90	247.80
3	8	G12212	1/2" x 2-1/2" HDG HEX BOLT GR5		0.20	1.63
4	16	G12FW	1/2" HDG USS FLATWASHER		0.03	0.54
5	8	G12LW	1/2" HDG LOCKWASHER		0.01	0.11
6	8	G12NUT	1/2" HDG HEAVY 2H HEX NUT		0.07	0.57
7	4	X-151787	STEEL GRATING - 24"W X 48"L - BEARING BAR 1 3/4" X 3/16"		97.27	389.06
8	16	X-151174	BAR GRATING CONNECTION (LGF037)		0.36	5.68
					TOTAL WT. #	745.40



STEEL GRATING
REMOVED FROM THESE
VIEWS
FOR CLARITY

X2

DETAIL A



TOLERANCE NOTES

TOLERANCES ON DIMENSIONS, UNLESS OTHERWISE NOTED ARE:
 SAWED, SHEARED AND GAS CUT EDGES ($\pm 0.030"$)
 DRILLED AND GAS CUT HOLES ($\pm 0.030"$) - NO CONING OF HOLES
 LASER CUT EDGES AND HOLES ($\pm 0.010"$) - NO CONING OF HOLES
 BENDS ARE $\pm 1/2$ DEGREE
 ALL OTHER MACHINING ($\pm 0.030"$)
 ALL OTHER ASSEMBLY ($\pm 0.060"$)

PROPRIETARY NOTE:
 THE DATA AND TECHNIQUES CONTAINED IN THIS DRAWING ARE PROPRIETARY INFORMATION OF VALMONT INDUSTRIES AND CONSIDERED A TRADE SECRET. ANY USE OR DISCLOSURE WITHOUT THE CONSENT OF VALMONT INDUSTRIES IS STRICTLY PROHIBITED.

DESCRIPTION
 4' X 8' EQUIPMENT PLATFORM
 (PARALLEL) EXTENSION SECTION
 W/ (2) STEEL PADS

CPD NO. 3718	DRAWN BY KC8 9/24/2012	ENG. APPROVAL
CLASS 81	SUB 01	DRAWING USAGE CUSTOMER
CHECKED BY CEK 2/18/2013		



Engineering Support Team:
 1-888-753-7446

Locations:
 New York, NY
 Atlanta, GA
 Los Angeles, CA
 Plymouth, IN
 Salem, OR
 Dallas, TX

PART NO. BTS-P8	PAGE 1 OF 1
DWG. NO. BTS-P8	