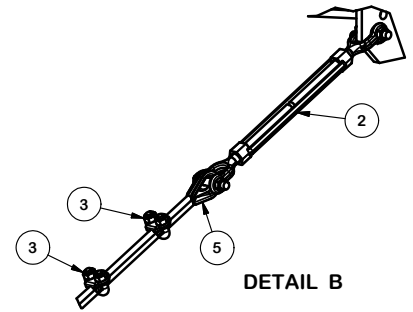
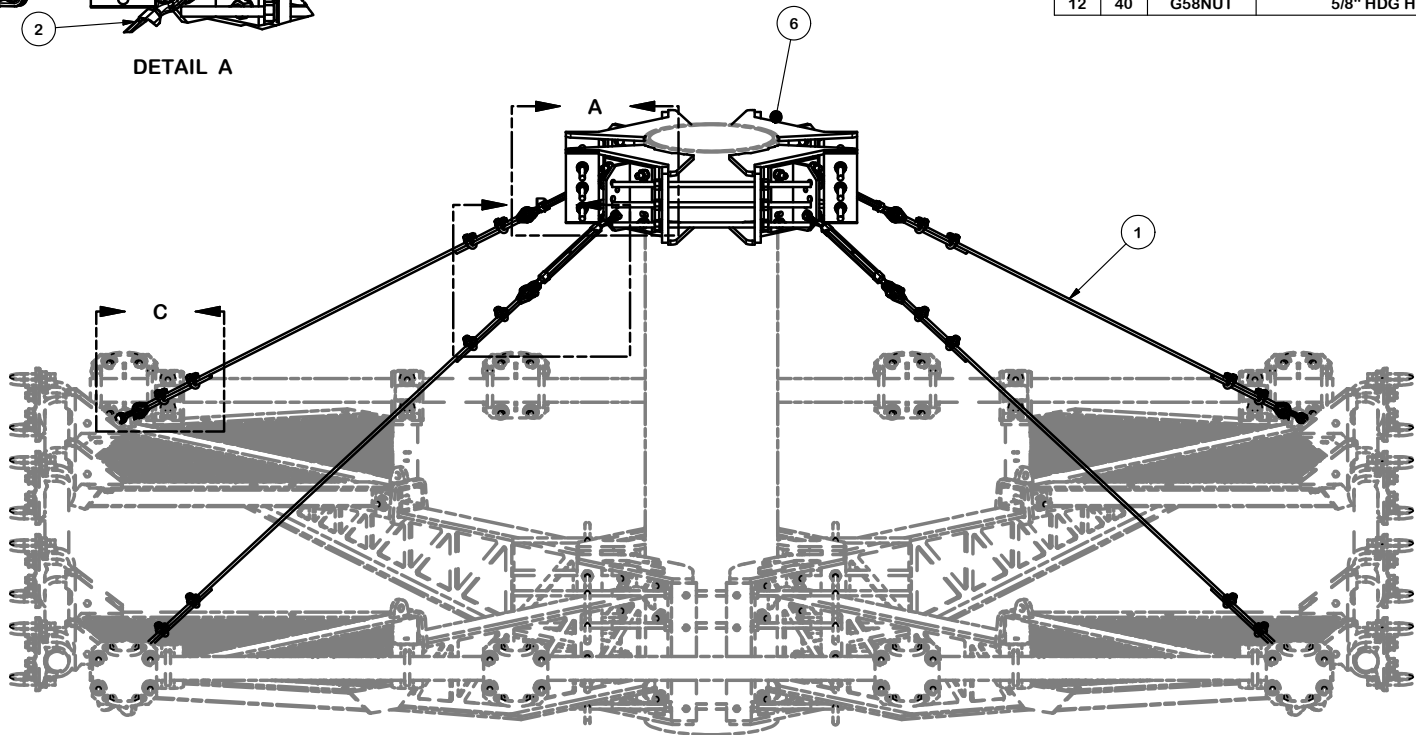
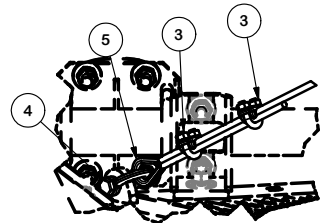


DETAIL A



DETAIL B



DETAIL C

PARTS LIST						
ITEM	QTY	PART NO.	PART DESCRIPTION	LENGTH	UNIT WT.	NET WT.
1	4	320103	3/8" EHS GUY STRAND		3.33	13.30
2	4	320601-I	5/8" TURNBUCKLE		2.63	10.53
3	16	320152-I	5/16" CABLE CLAMP		1.32	21.04
4	4	320751-I	5/16" CHAIN SHACKLE		0.76	3.05
5	8	320777 - I	5/16" THIMBLE		0.06	0.48
6	4	X-162290	QUAD BRACKET		54.48	217.94
7	4	X-TBW	T-BRACKET WELDMENT		13.60	54.40
8	12	G58R-24	5/8" X 24" THREADED ROD (HDG.)		2.22	26.60
8	12	G58R-48	5/8" X 48" THREADED ROD (HDG.)		4.43	53.19
9	16	G58234	5/8" UNC HEX BOLT (A325)	2 3/4 in	0.36	5.69
10	24	A58FW	5/8" HDG A325 FLATWASHER		0.03	0.82
11	40	G58LW	5/8" HDG LOCKWASHER		0.03	1.04
12	40	G58NUT	5/8" HDG HEAVY 2H HEX NUT		0.13	5.20

TOLERANCE NOTES

TOLERANCES ON DIMENSIONS, UNLESS OTHERWISE NOTED ARE:
 SAWED, SHEARED AND GAS CUT EDGES ($\pm 0.030"$)
 DRILLED AND GAS CUT HOLES ($\pm 0.030"$) - NO CONING OF HOLES
 LASER CUT EDGES AND HOLES ($\pm 0.010"$) - NO CONING OF HOLES
 BENDS ARE $\pm 1/2$ DEGREE
 ALL OTHER MACHINING ($\pm 0.030"$)
 ALL OTHER ASSEMBLY ($\pm 0.060"$)

PROPRIETARY NOTE:
 THE DATA AND TECHNIQUES CONTAINED IN THIS DRAWING ARE PROPRIETARY INFORMATION OF VALMONT INDUSTRIES AND CONSIDERED A TRADE SECRET. ANY USE OR DISCLOSURE WITHOUT THE CONSENT OF VALMONT INDUSTRIES IS STRICTLY PROHIBITED.

DESCRIPTION	
CRK-DC4	

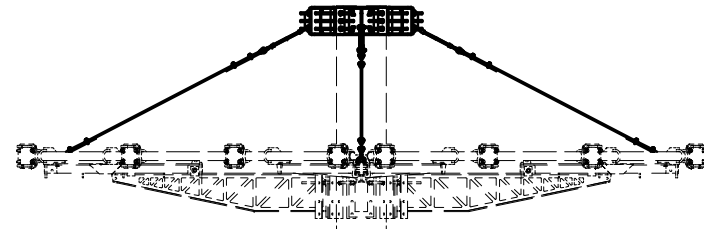
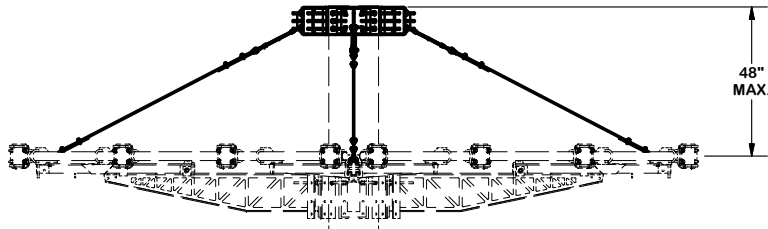
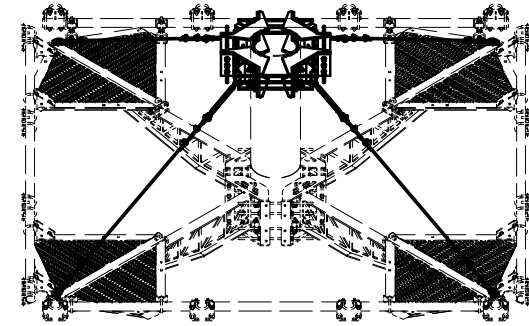
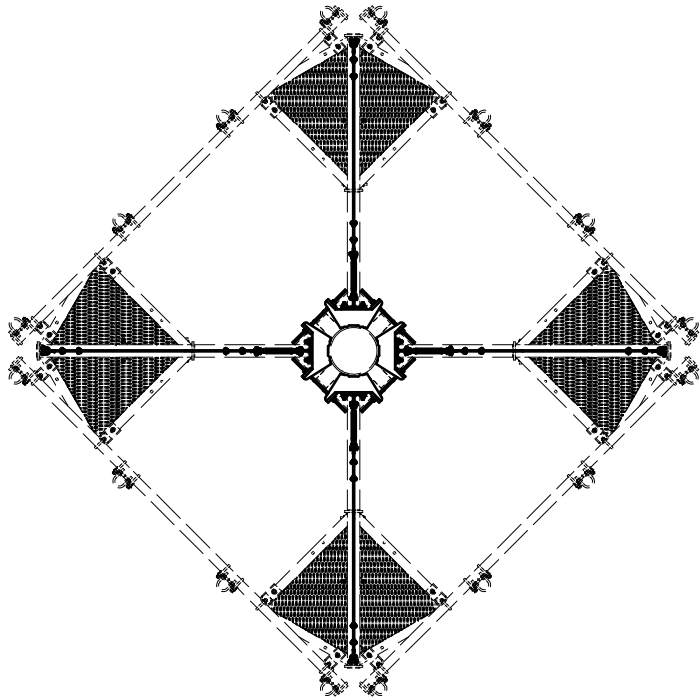
CPD NO.	DRAWN BY	ENG. APPROVAL
	CEK 10/30/2017	
CLASS	SUB	DRAWING USAGE
01	01	CUSTOMER
		CHECKED BY
		BMC 11/2/2017

SITE PRO 1
 Engineering Support Team:
 1-888-753-7446

Locations:
 New York, NY
 Atlanta, GA
 Los Angeles, CA
 Plymouth, IN
 Salem, OR
 Dallas, TX

A valmont COMPANY

PART NO.	CRK-DC4	PAGE
DWG. NO.	CRK-DC4	1 OF 2



TOLERANCE NOTES

TOLERANCES ON DIMENSIONS, UNLESS OTHERWISE NOTED ARE:
 SAWED, SHEARED AND GAS CUT EDGES ($\pm 0.030"$)
 DRILLED AND GAS CUT HOLES ($\pm 0.030"$) - NO CONING OF HOLES
 LASER CUT EDGES AND HOLES ($\pm 0.010"$) - NO CONING OF HOLES
 BENDS ARE $\pm 1/2$ DEGREE
 ALL OTHER MACHINING ($\pm 0.030"$)
 ALL OTHER ASSEMBLY ($\pm 0.060"$)

PROPRIETARY NOTE:
 THE DATA AND TECHNIQUES CONTAINED IN THIS DRAWING ARE PROPRIETARY INFORMATION OF VALMONT INDUSTRIES AND CONSIDERED A TRADE SECRET. ANY USE OR DISCLOSURE WITHOUT THE CONSENT OF VALMONT INDUSTRIES IS STRICTLY PROHIBITED.

DESCRIPTION
 CRK-DC4

CPD NO.	DRAWN BY	ENG. APPROVAL
CLASS	SUB	DRAWING USAGE
01	01	CUSTOMER
		CHECKED BY
		BMC 11/2/2017

SITE PRO 1
 A valmont COMPANY

Engineering Support Team:
 1-888-753-7446

Locations:
 New York, NY
 Atlanta, GA
 Los Angeles, CA
 Plymouth, IN
 Salem, OR
 Dallas, TX

PART NO.	CRK-DC4
DWG. NO.	CRK-DC4