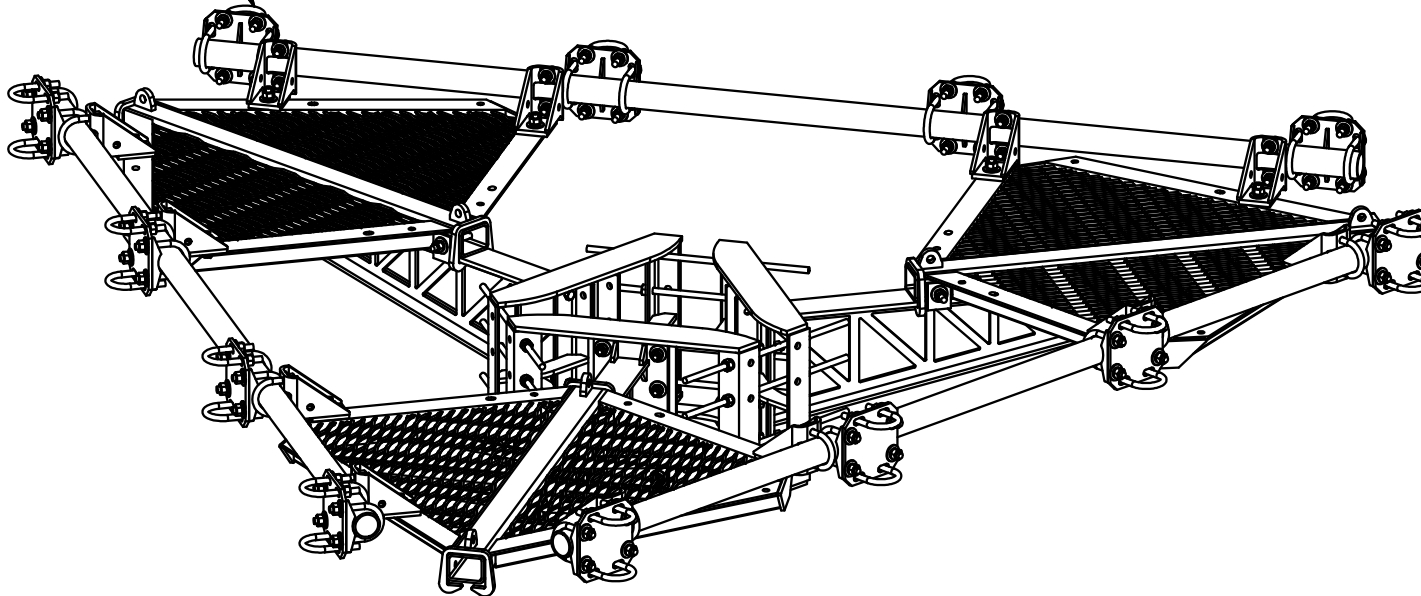


2-3/8" TO 2-7/8"  
ANTENNA MOUNTING PIPES  
(ORDERED SEPARATELY)



PARTS LIST						
ITEM	QTY	PART NO.	PART DESCRIPTION	LENGTH	UNIT WT.	NET WT.
1	3	X-LPP-CW	LOW PROFILE PLATFORM CORNER WELDMENT		198.75	596.26
2	3	X-LPP-SA10	TRUSS ARM WELDMENT FOR 8' AND 10' LOW PROFILE PLATFORMS		99.32	297.97
3	3	X-RM3HD	WELDMENT FOR 3-SIDED HEAVY DUTY RING MOUNT		84.42	253.25
4	12	X-LPP-PC	FACE PIPE CONNECTION BRACKET FORTRESS PLATFORM		7.01	84.11
5	12	X-SCX3-FR	FORTRESS CROSSOVER PLATE		6.61	79.37
6	12	X-LPP-A7	CORNER WELDMENT ATTACHMENT ANGLE	2 1/2 in	1.27	15.25
7	3	P30126	2-7/8" O.D. X 126" SCH. 40 PIPE	126 in	64.63	193.88
8	12	G58R-48	5/8" x 48" THREADED ROD (HDG.)	48 in	0.40	4.79
8	12	G58R-24	5/8" x 24" THREADED ROD (HDG.)	24 in	0.40	4.79
9	6	G58R-8	5/8" x 8" THREADED ROD (HDG.)		0.70	4.18
10	48	X-UB5300	5/8" X 3" X 5-1/4" X 2-1/2" U-BOLT (HDG.)		1.15	55.17
11	24	X-UB5258	5/8" X 2-5/8" X 4-1/2" X 2" U-BOLT (HDG.)		1.00	24.00
12	12	X-UB5304	5/8" X 3" X 4-1/4" X 2-1/2" U-BOLT (HDG.)		0.98	11.70
13	36	G58214	5/8" x 2-1/4" HDG HEX BOLT GR5		0.29	10.49
14	168	G58FW	5/8" HDG USS FLATWASHER	1/8 in	0.07	11.84
15	192	G58LW	5/8" HDG LOCKWASHER		0.03	5.01
16	192	G58NUT	5/8" HDG HEAVY 2H HEX NUT		0.13	24.94
					TOTAL WT. #	1742.69

**TOLERANCE NOTES**

TOLERANCES ON DIMENSIONS, UNLESS OTHERWISE NOTED ARE:  
 SAWED, SHEARED AND GAS CUT EDGES ( $\pm 0.030"$ )  
 DRILLED AND GAS CUT HOLES ( $\pm 0.030"$ ) - NO CONING OF HOLES  
 LASER CUT EDGES AND HOLES ( $\pm 0.010"$ ) - NO CONING OF HOLES  
 BENDS ARE  $\pm 1/2$  DEGREE  
 ALL OTHER MACHINING ( $\pm 0.030"$ )  
 ALL OTHER ASSEMBLY ( $\pm 0.060"$ )

PROPRIETARY NOTE:  
 THE DATA AND TECHNIQUES CONTAINED IN THIS DRAWING ARE PROPRIETARY INFORMATION OF VALMONT INDUSTRIES AND CONSIDERED A TRADE SECRET. ANY USE OR DISCLOSURE WITHOUT THE CONSENT OF VALMONT INDUSTRIES IS STRICTLY PROHIBITED.

DESCRIPTION  
 10' FORTRESS™  
 TRI-PLATFORM MOUNT

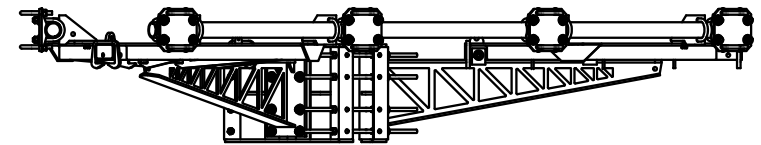
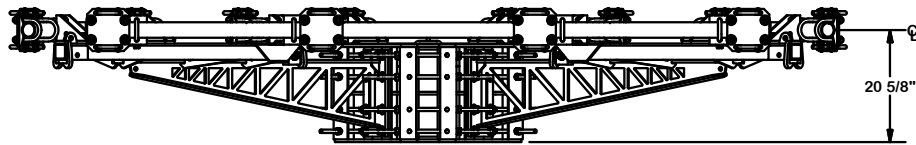
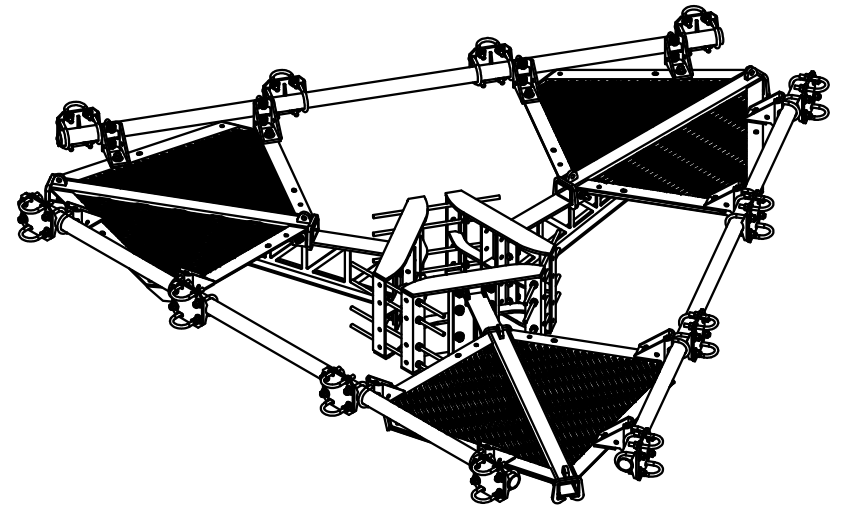
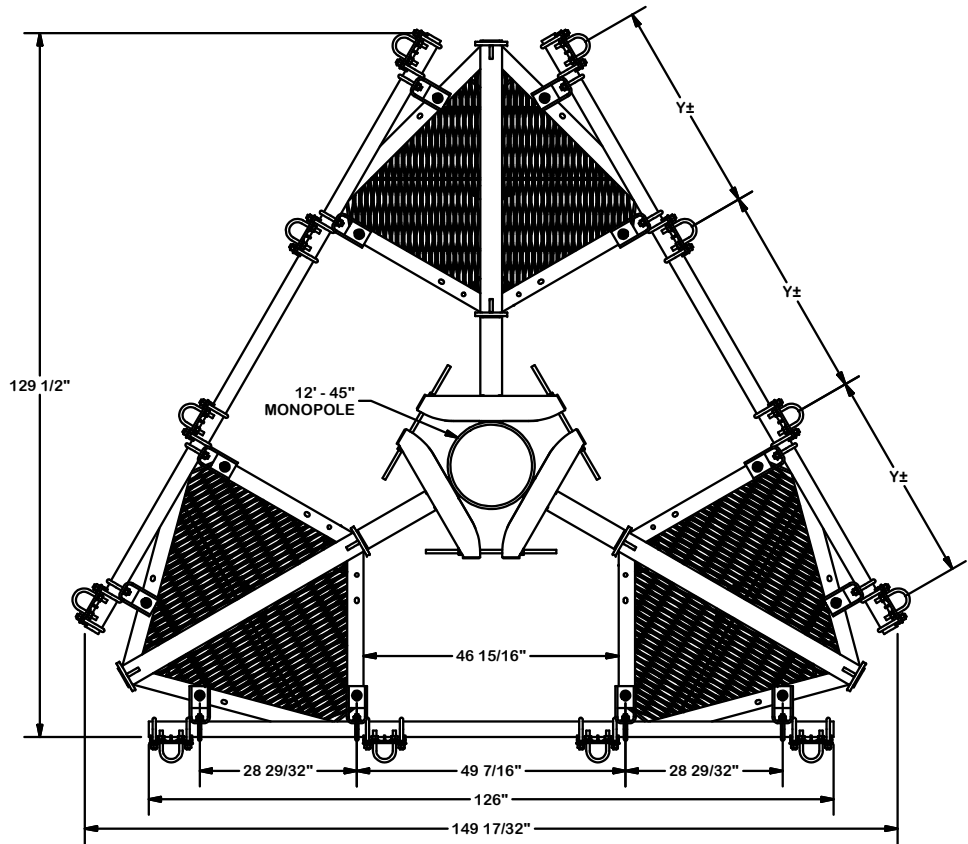
CPD NO.	DRAWN BY	ENG. APPROVAL
	CEK 8/9/2017	
CLASS	SUB	DRAWING USAGE
81	02	CUSTOMER
		CHECKED BY
		BMC 8/30/2017

**SITE PRO 1**  
 A valmont COMPANY

Engineering Support Team:  
 1-888-753-7446

Locations:  
 New York, NY  
 Atlanta, GA  
 Los Angeles, CA  
 Plymouth, IN  
 Salem, OR  
 Dallas, TX

PART NO.	F3P-10	PAGE
DWG. NO.	F3P-10	1 OF 4



**TOLERANCE NOTES**

TOLERANCES ON DIMENSIONS, UNLESS OTHERWISE NOTED ARE:  
 SAWED, SHEARED AND GAS CUT EDGES ( $\pm 0.030"$ )  
 DRILLED AND GAS CUT HOLES ( $\pm 0.030"$ ) - NO CONING OF HOLES  
 LASER CUT EDGES AND HOLES ( $\pm 0.010"$ ) - NO CONING OF HOLES  
 BENDS ARE  $\pm 1/2$  DEGREE  
 ALL OTHER MACHINING ( $\pm 0.030"$ )  
 ALL OTHER ASSEMBLY ( $\pm 0.060"$ )

PROPRIETARY NOTE:  
 THE DATA AND TECHNIQUES CONTAINED IN THIS DRAWING ARE PROPRIETARY INFORMATION OF VALMONT INDUSTRIES AND CONSIDERED A TRADE SECRET. ANY USE OR DISCLOSURE WITHOUT THE CONSENT OF VALMONT INDUSTRIES IS STRICTLY PROHIBITED.

DESCRIPTION  
**10' FORTRESS™  
 TRI-PLATFORM MOUNT**

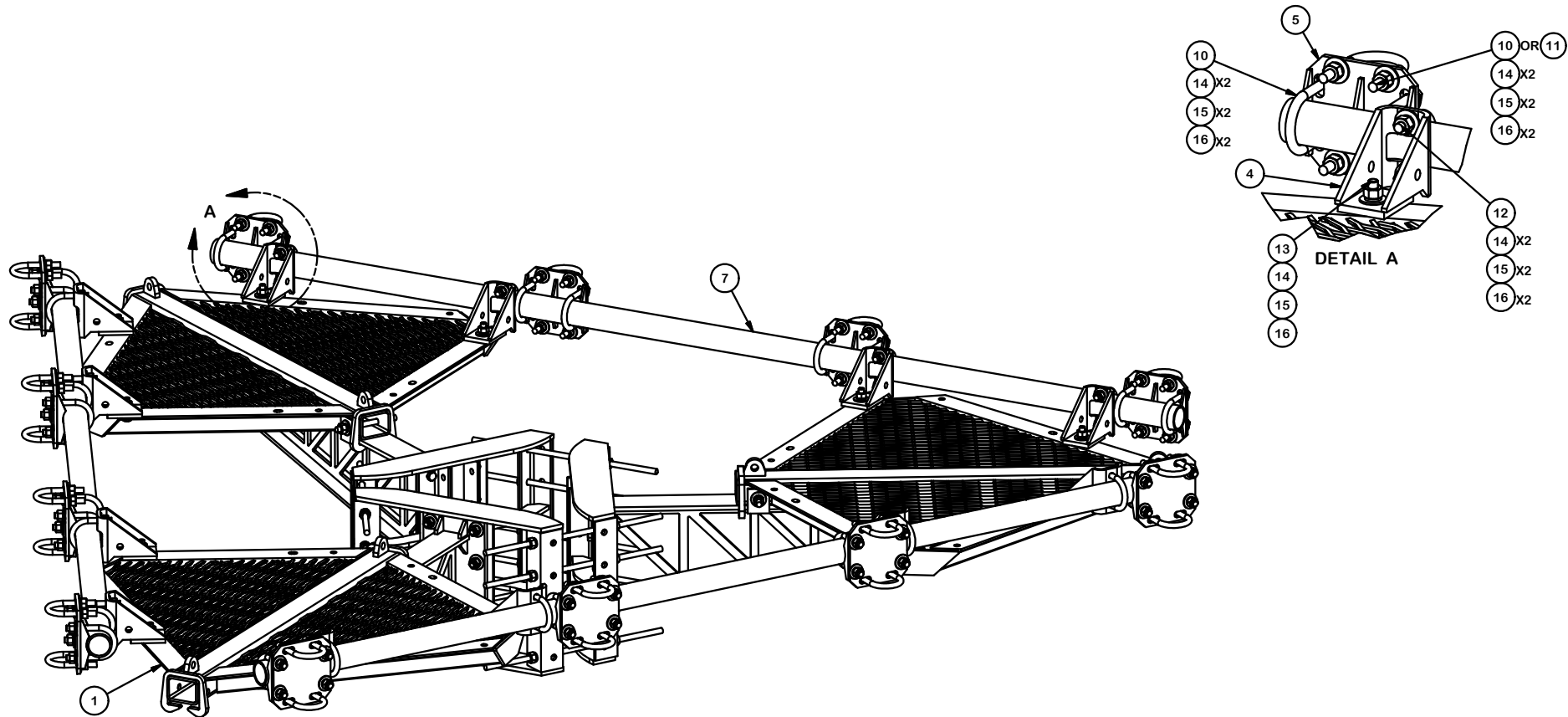
CPD NO.	DRAWN BY CEK	8/9/2017	ENG. APPROVAL
CLASS 81	SUB 02	DRAWING USAGE CUSTOMER	CHECKED BY BMC 8/30/2017

**SITE PRO 1**  
 A valmont COMPANY

Engineering Support Team:  
 1-888-753-7446

Locations:  
 New York, NY  
 Atlanta, GA  
 Los Angeles, CA  
 Plymouth, IN  
 Salem, OR  
 Dallas, TX

PART NO.	<b>F3P-10</b>	PAGE 2 OF 4
DWG. NO.	<b>F3P-10</b>	



**TOLERANCE NOTES**

TOLERANCES ON DIMENSIONS, UNLESS OTHERWISE NOTED ARE:  
 SAWED, SHEARED AND GAS CUT EDGES ( $\pm 0.030"$ )  
 DRILLED AND GAS CUT HOLES ( $\pm 0.030"$ ) - NO CONING OF HOLES  
 LASER CUT EDGES AND HOLES ( $\pm 0.010"$ ) - NO CONING OF HOLES  
 BENDS ARE  $\pm 1/2$  DEGREE  
 ALL OTHER MACHINING ( $\pm 0.030"$ )  
 ALL OTHER ASSEMBLY ( $\pm 0.060"$ )

PROPRIETARY NOTE:  
 THE DATA AND TECHNIQUES CONTAINED IN THIS DRAWING ARE PROPRIETARY INFORMATION OF VALMONT INDUSTRIES AND CONSIDERED A TRADE SECRET. ANY USE OR DISCLOSURE WITHOUT THE CONSENT OF VALMONT INDUSTRIES IS STRICTLY PROHIBITED.

DESCRIPTION  
 10' FORTRESS™  
 TRI-PLATFORM MOUNT

CPD NO.	DRAWN BY CEK 8/9/2017	ENG. APPROVAL
CLASS 81	SUB 02	DRAWING USAGE CUSTOMER
	CHECKED BY BMC 8/30/2017	

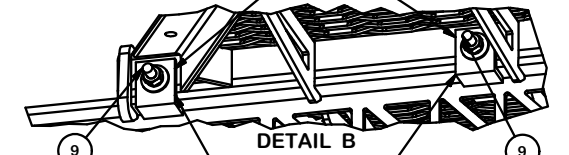
**SITE PRO 1**  
 A valmont COMPANY

Engineering Support Team:  
 1-888-753-7446

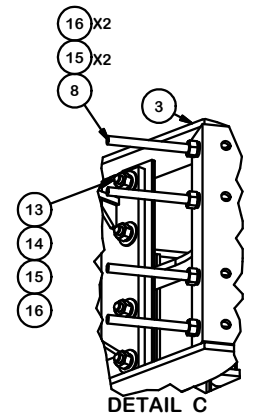
Locations:  
 New York, NY  
 Atlanta, GA  
 Los Angeles, CA  
 Plymouth, IN  
 Salem, OR  
 Dallas, TX

PART NO.	F3P-10	PAGE
DWG. NO.	F3P-10	3 OF 4

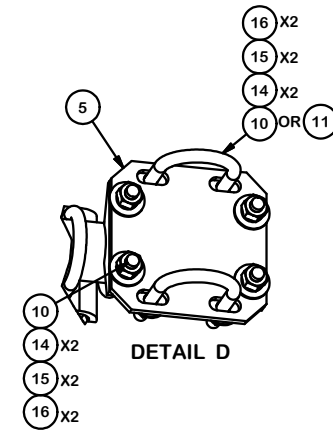
BOTH ANGLE CLAMPS  
MUST ENGAGE THE RAIL  
ON THE TRUSS ARM.  
(BOTH SIDES)



- 9
- 14 X2
- 15 X2
- 16 X2



- 16 X2
- 15 X2
- 8
- 13
- 14
- 15
- 16



- 16 X2
- 15 X2
- 14 X2
- 10 OR 11
- 10
- 14 X2
- 15 X2
- 16 X2

DETAIL D

DETAIL C



Locations:  
New York, NY  
Atlanta, GA  
Los Angeles, CA  
Plymouth, IN  
Salem, OR  
Dallas, TX

Engineering  
Support Team:  
1-888-753-7446

PART NO. **F3P-10**

DWG. NO. **F3P-10**

DESCRIPTION  
**10' FORTRESS™  
TRI-PLATFORM MOUNT**

CPD NO. DRAWN BY **CEK 8/9/2017** ENG. APPROVAL

CLASS SUB DRAWING USAGE CHECKED BY  
**81 02 CUSTOMER BMC 8/30/2017**

**TOLERANCE NOTES**

TOLERANCES ON DIMENSIONS, UNLESS OTHERWISE NOTED ARE:  
SAWED, SHEARED AND GAS CUT EDGES ( $\pm 0.030"$ )  
DRILLED AND GAS CUT HOLES ( $\pm 0.030"$ ) - NO CONING OF HOLES  
LASER CUT EDGES AND HOLES ( $\pm 0.010"$ ) - NO CONING OF HOLES  
BENDS ARE  $\pm 1/2$  DEGREE  
ALL OTHER MACHINING ( $\pm 0.030"$ )  
ALL OTHER ASSEMBLY ( $\pm 0.060"$ )

PROPRIETARY NOTE:  
THE DATA AND TECHNIQUES CONTAINED IN THIS DRAWING ARE PROPRIETARY INFORMATION OF VALMONT INDUSTRIES AND CONSIDERED A TRADE SECRET. ANY USE OR DISCLOSURE WITHOUT THE CONSENT OF VALMONT INDUSTRIES IS STRICTLY PROHIBITED.