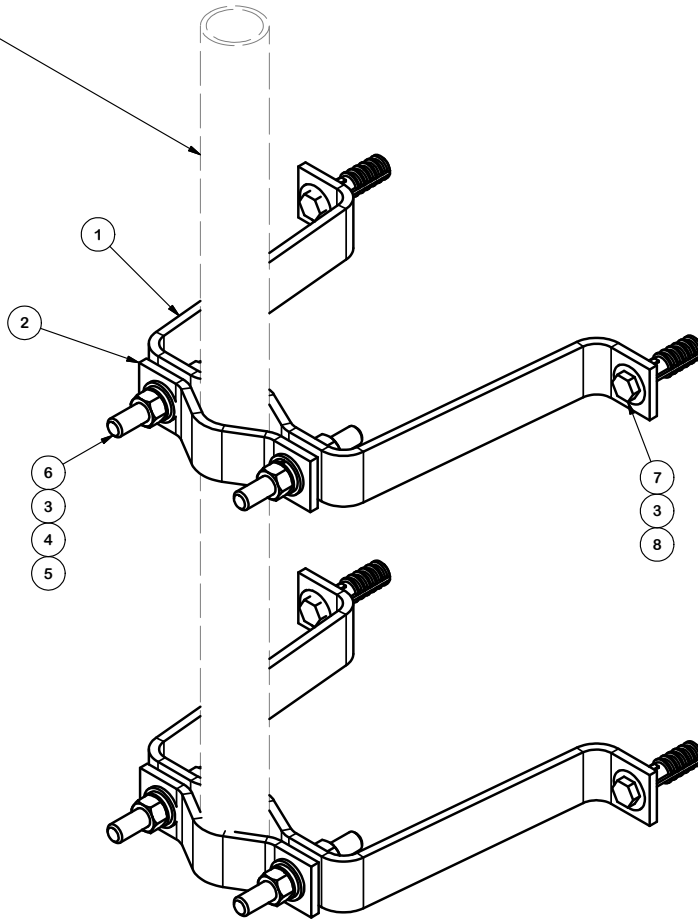


1.05" - 2.875" O.D.
PIPE SOLD SEPARATELY



PARTS LIST						
ITEM	QTY	PART NO.	PART DESCRIPTION	LENGTH	UNIT WT.	NET WT.
1	2	HDWM08.01	HEAVY DUTY WALL MOUNT BRACKET, 8" OFFSET		2.67	5.34
2	2	ACP10	1.5" - 3.5" O.D. CLAMP HALF		0.61	1.22
3	12	GWF-04	1/2" GALV FLAT WASHER		0.02	0.23
4	8	GWL04	1/2" GALV LOCK WASHER		0.01	0.11
5	8	GN-04	1/2"-13 UNC GALV HEX NUT		0.04	0.35
6	4	MT-379-4	1/2"-13 UNC X 4" GALV THREADED ROD		0.22	0.89
7	4	GLS0424	1/2" X 2-1/2" GALV LAG SCREW		0.07	0.27
8	4	LSG04S	1/2" SHORT GALV LAG SHIELD		0.07	0.26
					TOTAL WT. #	8.52

TOLERANCE NOTES

TOLERANCES ON DIMENSIONS, UNLESS OTHERWISE NOTED ARE:
 SAWED, SHEARED AND GAS CUT EDGES ($\pm 0.030"$)
 DRILLED AND GAS CUT HOLES ($\pm 0.030"$) - NO CONING OF HOLES
 LASER CUT EDGES AND HOLES ($\pm 0.010"$) - NO CONING OF HOLES
 BENDS ARE $\pm 1/2$ DEGREE
 ALL OTHER MACHINING ($\pm 0.030"$)
 ALL OTHER ASSEMBLY ($\pm 0.060"$)

PROPRIETARY NOTE:
 THE DATA AND TECHNIQUES CONTAINED IN THIS DRAWING ARE PROPRIETARY INFORMATION OF VALMONT INDUSTRIES AND CONSIDERED A TRADE SECRET. ANY USE OR DISCLOSURE WITHOUT THE CONSENT OF VALMONT INDUSTRIES IS STRICTLY PROHIBITED.

DESCRIPTION
**HEAVY DUTY
 WALL MOUNT
 8" OFFSET**



Engineering
 Support Team:
 1-888-753-7446

Locations:
 New York, NY
 Atlanta, GA
 Los Angeles, CA
 Plymouth, IN
 Salem, OR
 Dallas, TX

CPD NO.	DRAWN BY	ENG. APPROVAL
CLASS	SUB	DRAWING USAGE
81	01	CUSTOMER
	CHECKED BY	
	BMC	2/3/2015

PART NO.	HDWM08
DWG. NO.	HDWM08