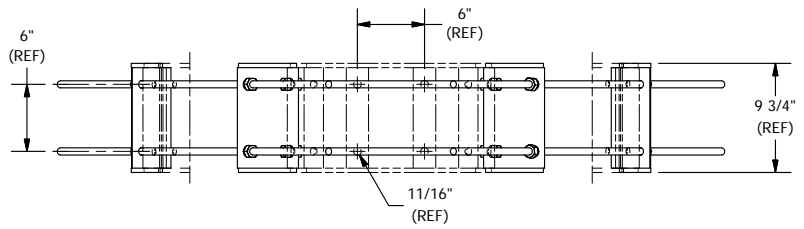
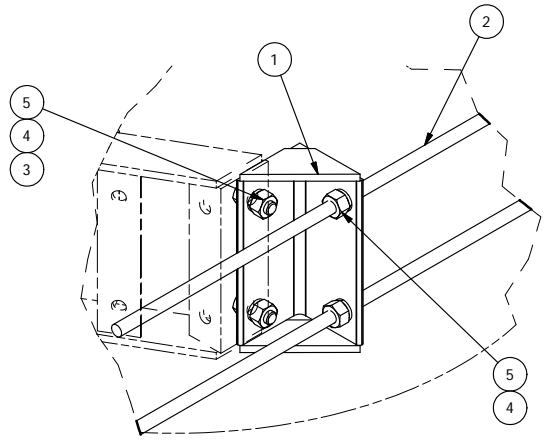
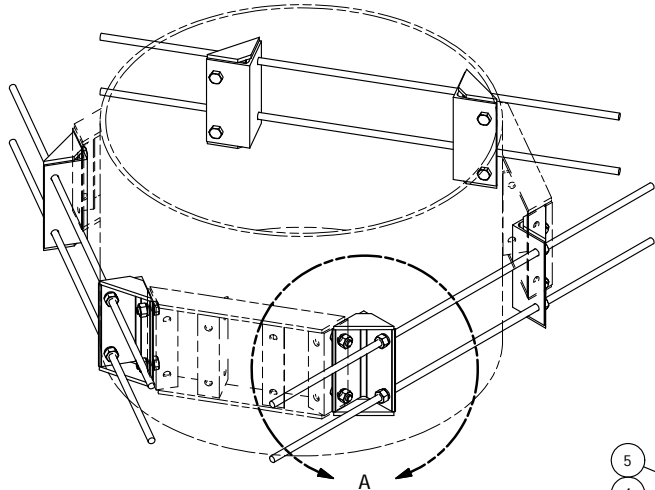
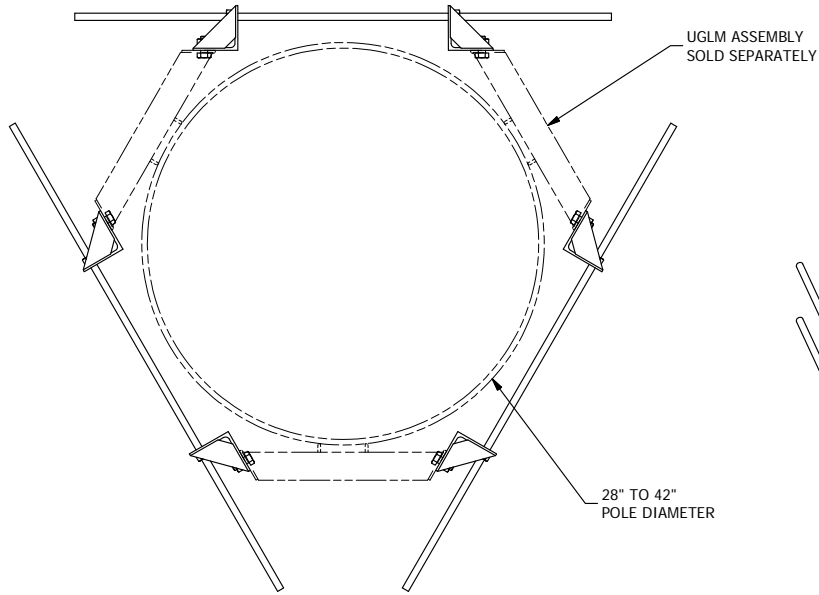


PARTS LIST						
ITEM	QTY	PART NO.	PART DESCRIPTION	LENGTH	UNIT WT.	NET WT.
1	6	X--LP42	ANGLE ADAPTER		6.64	39.86
2	6	G58R-48	5/8" x 48" THREADED ROD (HDG.)	48 in	4.18	25.09
3	12	G58112	5/8" x 1-1/2" HDG BOLT	1 1/2 in	0.25	2.97
4	24	G58LW	5/8" HDG LOCKWASHER		0.03	0.63
5	24	G58NUT	5/8" HDG HEAVY 2H HEX NUT		0.13	3.12
TOTAL WT. #						71.66



TOLERANCE NOTES

**TOLERANCES ON DIMENSIONS, UNLESS OTHERWISE NOTED ARE:
 SAWED, SHEARED AND GAS CUT EDGES ($\pm 0.030"$)
 DRILLED AND GAS CUT HOLES ($\pm 0.030"$) - NO CONING OF HOLES
 LASER CUT EDGES AND HOLES ($\pm 0.010"$) - NO CONING OF HOLES
 BENDS ARE $\pm 1/2$ DEGREE
 ALL OTHER MACHINING ($\pm 0.030"$)
 ALL OTHER ASSEMBLY ($\pm 0.060"$)**

**PROPRIETARY NOTE:
 THE DATA AND TECHNIQUES CONTAINED IN THIS DRAWING ARE PROPRIETARY INFORMATION OF VALMONT
 INDUSTRIES AND CONSIDERED A TRADE SECRET. ANY USE OR DISCLOSURE WITHOUT THE CONSENT OF
 VALMONT INDUSTRIES IS STRICTLY PROHIBITED.**

DESCRIPTION
**LARGE POLE ADAPTER
 MINI RING MOUNT
 (28" TO 42" DIA)**

SITE PRO 1
 Engineering Support Team:
 1-888-753-7446
 Locations:
 New York, NY
 Atlanta, GA
 Los Angeles, CA
 Plymouth, IN
 Salem, OR
 Dallas, TX

CPD NO. N/A	DRAWN BY BMC 12/20/2010	ENG. APPROVAL
CLASS 81	SUB 01	DRAWING USAGE CUSTOMER
CHECKED BY RCH		DATE 2/4/2011

PART NO. LP-42	PAGE 1 OF 1
DWG. NO. LP-42	

A	LP-42 PUT ON NEW TITLE BLOCK	KC	4/27/2012
REV	DESCRIPTION OF REVISIONS	CPD	BY
REVISION HISTORY			