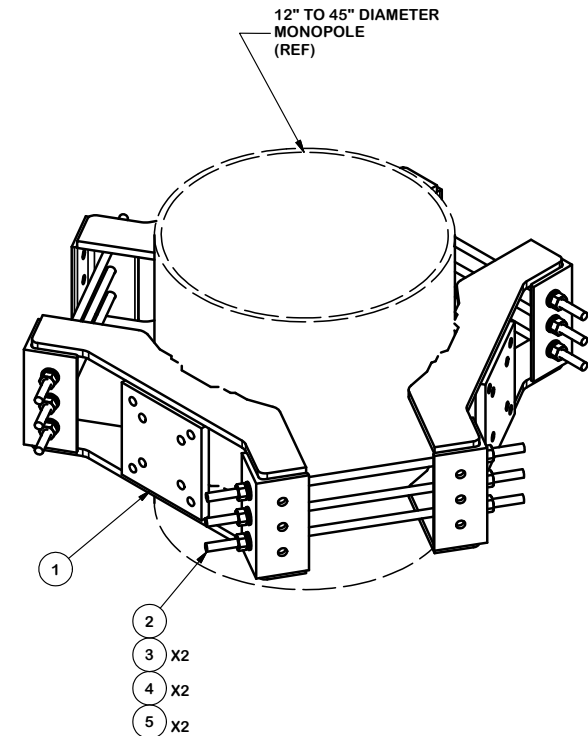


PARTS LIST						
ITEM	QTY	PART NO.	PART DESCRIPTION	LENGTH	UNIT WT.	NET WT.
1	3	X-LWRM	RING MOUNT WELDMENT		68.16	204.48
2	9	G58R-48	5/8" x 48" THREADED ROD (HDG.)		0.55	4.94
2	9	G58R-24	5/8" x 24" THREADED ROD (HDG.)		0.55	4.94
3	18	A58FW	5/8" HDG A325 FLATWASHER		0.03	0.61
4	18	G58LW	5/8" HDG LOCKWASHER		0.03	0.47
5	18	A58NUT	5/8" HDG A325 HEX NUT		0.13	2.34
					TOTAL WT. #	264.35



TOLERANCE NOTES

TOLERANCES ON DIMENSIONS, UNLESS OTHERWISE NOTED ARE:
 SAWED, SHEARED AND GAS CUT EDGES ($\pm 0.030"$)
 DRILLED AND GAS CUT HOLES ($\pm 0.030"$) - NO CONING OF HOLES
 LASER CUT EDGES AND HOLES ($\pm 0.010"$) - NO CONING OF HOLES
 BENDS ARE $\pm 1/2$ DEGREE
 ALL OTHER MACHINING ($\pm 0.030"$)
 ALL OTHER ASSEMBLY ($\pm 0.060"$)

PROPRIETARY NOTE:
 THE DATA AND TECHNIQUES CONTAINED IN THIS DRAWING ARE PROPRIETARY INFORMATION OF VALMONT INDUSTRIES AND CONSIDERED A TRADE SECRET. ANY USE OR DISCLOSURE WITHOUT THE CONSENT OF VALMONT INDUSTRIES IS STRICTLY PROHIBITED.

DESCRIPTION
RING MOUNT ASSEMBLY
 12" TO 45" DIAMETER POLE

SITE PRO 1
 A valmont COMPANY

Engineering Support Team:
 1-888-753-7446

Locations:
 New York, NY
 Atlanta, GA
 Los Angeles, CA
 Plymouth, IN
 Salem, OR
 Dallas, TX

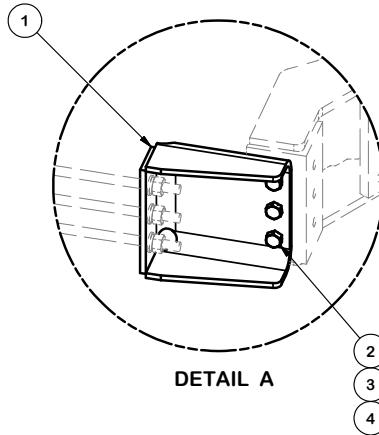
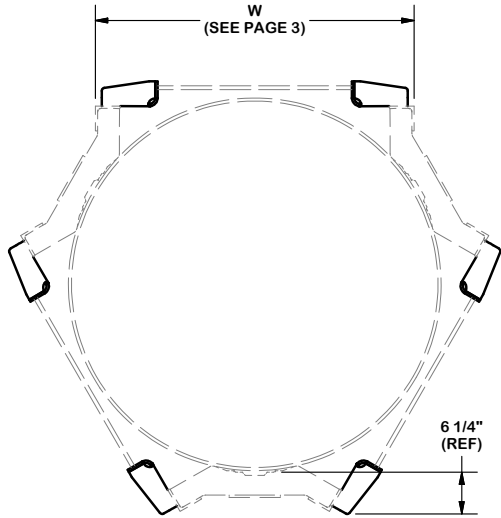
REV	DESCRIPTION OF REVISIONS	CPD	BY	DATE
A	REDRAWN IN INV. UPDATED TABLES & VIEWS		KC8	7/25/2012

CPD NO. 4433	DRAWN BY BMC 3/17/2009	ENG. APPROVAL
CLASS 81	SUB 01	DRAWING USAGE CUSTOMER
CHECKED BY CEK 8/24/2012		

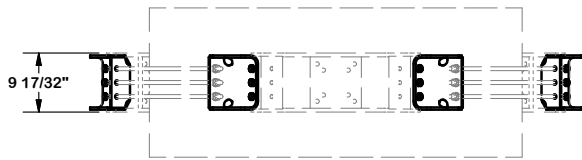
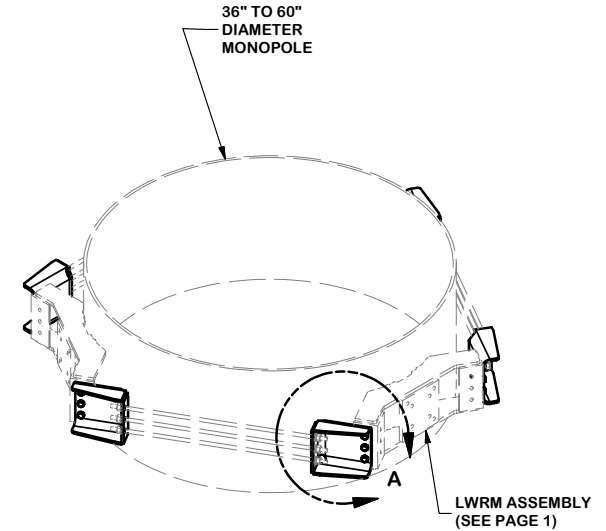
PART NO. LWRM	
DWG. NO. LWRM	

PARTS LIST						
ITEM	QTY	PART NO.	PART DESCRIPTION	LENGTH	UNIT WT.	NET WT.
1	6	X-178627	BENT EXTENSION BRACKET		15.80	94.79
2	18	A5802	5/8" x 2" HDG A325 HEX BOLT		0.27	4.89
3	18	G58LW	5/8" HDG LOCKWASHER		0.03	0.47
4	18	A58NUT	5/8" HDG A325 HEX NUT		0.13	2.34

TOTAL WEIGHT: 105.90#



P/N RM-ADK
 OPTIONAL LARGE DIAMETER ADAPTER ASSEMBLY
 FOR USE WITH LWRM (SOLD SEPARATELY)
 ON 36" TO 60" DIAMETER MONOPOLES



TOLERANCE NOTES

TOLERANCES ON DIMENSIONS, UNLESS OTHERWISE NOTED ARE:
 SAWED, SHEARED AND GAS CUT EDGES ($\pm 0.030"$)
 DRILLED AND GAS CUT HOLES ($\pm 0.030"$) - NO CONING OF HOLES
 LASER CUT EDGES AND HOLES ($\pm 0.010"$) - NO CONING OF HOLES
 BENDS ARE $\pm 1/2$ DEGREE
 ALL OTHER MACHINING ($\pm 0.030"$)
 ALL OTHER ASSEMBLY ($\pm 0.060"$)

PROPRIETARY NOTE:
 THE DATA AND TECHNIQUES CONTAINED IN THIS DRAWING ARE PROPRIETARY INFORMATION OF VALMONT
 INDUSTRIES AND CONSIDERED A TRADE SECRET. ANY USE OR DISCLOSURE WITHOUT THE CONSENT OF
 VALMONT INDUSTRIES IS STRICTLY PROHIBITED.

DESCRIPTION
**RING MOUNT
 ASSEMBLY**
 12" TO 45" DIAMETER POLE



Engineering
 Support Team:
 1-888-753-7446

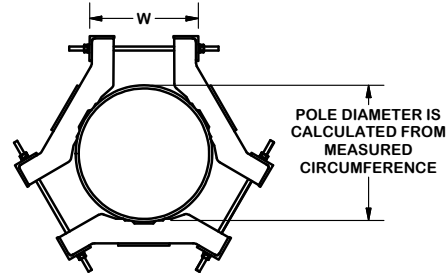
Locations:
 New York, NY
 Atlanta, GA
 Los Angeles, CA
 Plymouth, IN
 Salem, OR
 Dallas, TX

CPD NO. 4433	DRAWN BY BMC 3/17/2009	ENG. APPROVAL
CLASS 81	SUB 01	DRAWING USAGE CUSTOMER
CHECKED BY CEK 8/24/2012		

PART NO. RM-ADK	PAGE 2 OF 3
DWG. NO. LWRM	

A	REDRAWN IN INV. UPDATED TABLES & VIEWS	KC8	7/25/2012
REV	DESCRIPTION OF REVISIONS	CPD	BY DATE
REVISION HISTORY			

VALMONT IS SUPPLYING THE VALUE OF THE "W" DIMENSIONS TO ASSIST THE ERECTOR IN PRE-ASSEMBLING THE CLAMPS & TIE RODS.



THE CIRCUMFERENCE IS THE DISTANCE MEASURED AROUND THE OUTSIDE OF THE POLE AT THE LOCATION OF THE CLAMP.

CIRCUMF	DIA (REF)	W	CIRCUMF	DIA (REF)	W	CIRCUMF	DIA (REF)	W	CIRCUMF	DIA (REF)	W	CIRCUMF	DIA (REF)	W	CIRCUMF	DIA (REF)	W
38"	12-1/8"	9-3/16"	63"	20-1/16"	16-3/16"	88"	28"	23-3/16"	113"	36"	30-3/16"	138"	43-15/16"	37-1/4"	163"	51-7/8"	44-5/16"
39"	12-7/16"	9-7/16"	64"	20-3/8"	16-7/16"	89"	28-5/16"	23-1/2"	114"	36-5/16"	30-1/2"	139"	44-1/4"	37-1/2"	164"	52-3/16"	44-9/16"
40"	12-3/4"	9-3/4"	65"	20-11/16"	16-3/4"	90"	28-5/8"	23-3/4"	115"	36-5/8"	30-3/4"	140"	44-9/16"	37-13/16"	165"	52-1/2"	44-7/8"
41"	13-1/16"	10"	66"	21"	17"	91"	28-15/16"	24-1/16"	116"	36-15/16"	31-1/16"	141"	44-7/8"	38-1/16"	166"	52-13/16"	45-3/16"
42"	13-3/8"	10-5/16"	67"	21-5/16"	17-5/16"	92"	29-5/16"	24-5/16"	117"	37-1/4"	31-5/16"	142"	45-3/16"	38-3/8"	167"	53-3/16"	45-7/16"
43"	13-11/16"	10-9/16"	68"	21-5/8"	17-9/16"	93"	29-5/8"	24-5/8"	118"	37-9/16"	31-5/8"	143"	45-1/2"	38-9/16"	168"	53-1/2"	45-3/4"
44"	14"	10-7/8"	69"	21-15/16"	17-7/8"	94"	29-15/16"	24-7/8"	119"	37-7/8"	31-7/8"	144"	45-13/16"	38-7/8"	169"	53-13/16"	46"
45"	14-5/16"	11-2/16"	70"	22-5/16"	18-1/8"	95"	30-1/4"	25-1/8"	120"	38-3/16"	32-3/16"	145"	46-1/8"	39-1/8"	170"	54-1/8"	46-5/16"
46"	14-5/8"	11-3/8"	71"	22-5/8"	18-7/16"	96"	30-9/16"	25-7/16"	121"	38-1/2"	32-7/16"	146"	46-1/2"	39-7/16"	171"	54-7/16"	46-9/16"
47"	14-15/16"	11-11/16"	72"	22-15/16"	18-11/16"	97"	30-7/8"	25-11/16"	122"	38-13/16"	32-3/4"	147"	46-13/16"	39-3/4"	172"	54-3/4"	46-7/8"
48"	15-1/4"	11-15/16"	73"	23-1/4"	19"	98"	31-3/16"	26"	123"	39-1/8"	33"	148"	47-1/8"	40"	173"	55-1/16"	47-1/8"
49"	15-5/8"	12-1/4"	74"	23-9/16"	19-1/4"	99"	31-1/2"	26-1/4"	124"	39-1/2"	33-5/16"	149"	47-7/16"	40-5/16"	174"	55-3/8"	47-7/16"
50"	15-15/16"	12-1/2"	75"	23-7/8"	19-9/16"	100"	31-13/16"	26-9/16"	125"	39-13/16"	33-9/16"	150"	47-3/4"	40-9/16"	175"	55-11/16"	47-11/16"
51"	16-1/4"	12-13/16"	76"	24-1/4"	19-13/16"	101"	32-1/8"	26-13/16"	126"	40-1/8"	33-7/8"	151"	48-1/16"	40-7/8"	176"	56"	48"
52"	16-9/16"	13-1/16"	77"	24-1/2"	20-1/8"	102"	32-7/16"	27"	127"	40-7/16"	34-1/8"	152"	48-3/8"	41-3/16"	177"	56-5/16"	48-1/4"
53"	16-7/8"	13-3/8"	78"	24-13/16"	20-3/8"	103"	32-13/16"	27-3/8"	128"	40-3/4"	34-7/16"	153"	48-11/16"	41-7/16"	178"	56-11/16"	48-9/16"
54"	17-3/16"	13-5/8"	79"	25-1/8"	20-11/16"	104"	33-1/8"	27-11/16"	129"	41-1/16"	31-11/16"	154"	49"	41-3/4"	179"	57"	48-7/8"
55"	17-1/2"	13-15/16"	80"	25-7/16"	20-15/16"	105"	33-7/16"	27-15/16"	130"	41-3/8"	35"	155"	49-5/16"	42"	180"	57-5/16"	49-1/8"
56"	17-13/16"	14-3/16"	81"	25-13/16"	21-1/4"	106"	33-3/4"	28-1/4"	131"	41-11/16"	35-1/4"	156"	49-11/16"	42-5/16"	181"	57-5/8"	49-7/16"
57"	18-1/8"	14-1/2"	82"	26-1/8"	21-1/2"	107"	34-1/16"	28-1/2"	132"	42"	35-9/16"	157"	50"	42-5/8"	182"	57-15/16"	49-11/16"
58"	18-7/16"	14-3/4"	83"	26-7/16"	21-13/16"	108"	34-3/8"	28-13/16"	133"	42-5/16"	35-13/16"	158"	50-5/16"	42-7/8"	183"	58-1/4"	50"
59"	18-3/4"	15-1/16"	84"	26-3/4"	22-1/16"	109"	34-11/16"	29-1/16"	134"	42-5/8"	36-1/8"	159"	50-5/8"	43-3/16"	184"	58-9/16"	50-1/4"
60"	19-1/8"	15-5/16"	85"	27-1/16"	22-3/8"	110"	35"	29-3/8"	135"	43"	36-3/8"	160"	50-15/16"	43-7/16"	185"	58-7/8"	50-9/16"
61"	19-7/16"	15-5/8"	86"	27-3/8"	22-5/8"	111"	35-5/16"	29-5/8"	136"	43-5/16"	36-11/16"	161"	51-1/4"	43-3/4"	186"	59-3/16"	50-13/16"
62"	19-3/4"	15-7/8"	87"	27-11/16"	22-15/16"	112"	35-5/8"	29-15/16"	137"	43-5/8"	36-15/16"	162"	51-9/16"	44"	187"	59-1/2"	51"
															188"	59-13/16"	51-3/8"
															189"	60-3/16"	51-11/16"

TOLERANCE NOTES

TOLERANCES ON DIMENSIONS, UNLESS OTHERWISE NOTED ARE:
 SAWED, SHEARED AND GAS CUT EDGES ($\pm 0.030"$)
 DRILLED AND GAS CUT HOLES ($\pm 0.030"$) - NO CONING OF HOLES
 LASER CUT EDGES AND HOLES ($\pm 0.010"$) - NO CONING OF HOLES
 BENDS ARE $\pm 1/2$ DEGREE
 ALL OTHER MACHINING ($\pm 0.030"$)
 ALL OTHER ASSEMBLY ($\pm 0.060"$)

PROPRIETARY NOTE:
 THE DATA AND TECHNIQUES CONTAINED IN THIS DRAWING ARE PROPRIETARY INFORMATION OF VALMONT INDUSTRIES AND CONSIDERED A TRADE SECRET. ANY USE OR DISCLOSURE WITHOUT THE CONSENT OF VALMONT INDUSTRIES IS STRICTLY PROHIBITED.

DESCRIPTION
RING MOUNT ASSEMBLY
 12" TO 45" DIAMETER POLE

CPD NO. 4433	DRAWN BY BMC 3/17/2009	ENG. APPROVAL
CLASS 81	SUB 01	DRAWING USAGE CUSTOMER
CHECKED BY CEK 8/24/2012		



Locations:
 New York, NY
 Atlanta, GA
 Los Angeles, CA
 Plymouth, IN
 Salem, OR
 Dallas, TX

Engineering Support Team:
 1-888-753-7446

PART NO. LWRM	PAGE 3 OF 3
DWG. NO. LWRM	

A	REDRAWN IN INV. UPDATED TABLES & VIEWS	KC8	7/25/12
REV	DESCRIPTION OF REVISIONS	CPD	BY DATE
REVISION HISTORY			