

PARTS LIST						
ITEM	QTY	PART NO.	PART DESCRIPTION	LENGTH	UNIT WT.	NET WT.
1	1	X-MEP44	4' X 4' MODULAR EQUIPMENT PLATFORM BASE		201.72	201.72
2	2	X-MRAIL4	4' HANDRAIL WELDMENT FOR MODULAR EQUIPMENT PLATFORM		60.49	120.97
3	2	X-MAW	MODULAR EQUIPMENT PLATFORM ACCESS WELDMENT		53.54	107.07
4	2	X-MSWS	WELDED STEP FOR 1 LEVEL MODULAR STEP		52.77	105.53
5	2	X-MSTEP	STAIR WELDMENT FOR MODULAR EQUIPMENT PLATFORM		37.92	75.85
6	4	X-MSH2	MODULAR HANRAIL FOR TWO STAIRS		10.53	42.11
7	4	X-MSTEP2MR	MID RAIL FOR MSTEP2	35 1/4 in	10.14	40.58
8	4	X-MSHUP	HANDRAIL WELDMENT		12.25	48.98
9	8	X-MSHSP	HANDRAIL SPACER PIPE	1 in	0.10	0.80
10	8	X-MS2A	SIDE ANGLE FOR TWO STAIR ASSEMBLY	15 1/4 in	3.20	25.60
11	8	X-MTRC	MODULAR TOP RAIL CORNER SPLICE		1.25	10.03
12	8	X-MKPC	MODULAR KICKER PLATE CORNER SPLICE	4 in	1.66	13.25
13	4	X-MJCP	MJACK CONNECTION PLATE	5 3/8 in	5.49	21.98
14	4	X-JACK	5,000 LB. SIDE CRANK JACK		13.37	53.46
15	4	X-MJFP	MODULAR JACK FOOTPAD		14.35	57.38
16	4	G103	1" X 3" HEX BOLT (HDG.)	3 in	1.07	4.29
17	8	G1LW	1" LOCK WASHER		0.09	0.76
18	4	G1NUT	1" HDG HEAVY HEX NUT		0.47	1.88
19	8	A58234	5/8" x 2-3/4" HDG A325 HEX BOLT	2 3/4 in	0.36	2.85
20	56	G58134	5/8" x 1-3/4" HDG BOLT	1 3/4 in	0.27	15.06
21	32	G58FW	5/8" HDG USS FLATWASHER	1/8 in	0.07	2.25
22	64	G58LW	5/8" HDG LOCKWASHER		0.03	1.67
23	64	G58NUT	5/8" HDG HEAVY 2H HEX NUT		0.13	8.31
24	4	G3803	3/8" x 3" HDG HEX BOLT GR5		0.12	0.48
25	12	G38112	3/8" x 1-1/2" HDG HEX BOLT GR5		0.07	0.85
26	24	G38FW	3/8" HDG USS FLATWASHER		0.01	0.28
27	16	G38LW	3/8" HDG LOCKWASHER		0.01	0.11
28	16	G38NUT	3/8" HDG HEAVY 2H HEX NUT		0.03	0.54
<b>TOTAL WT. #</b>					<b>964.67</b>	

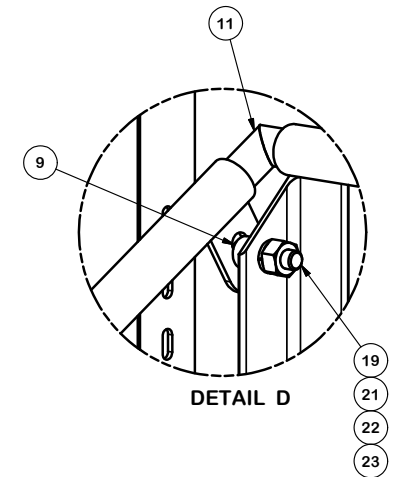
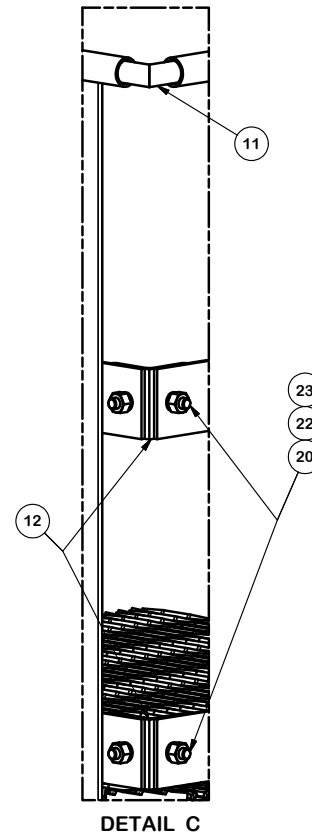
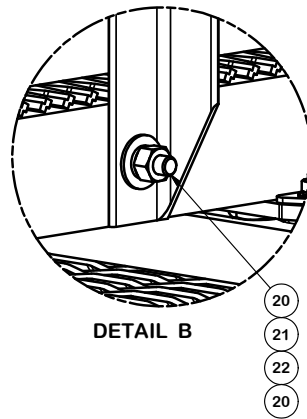
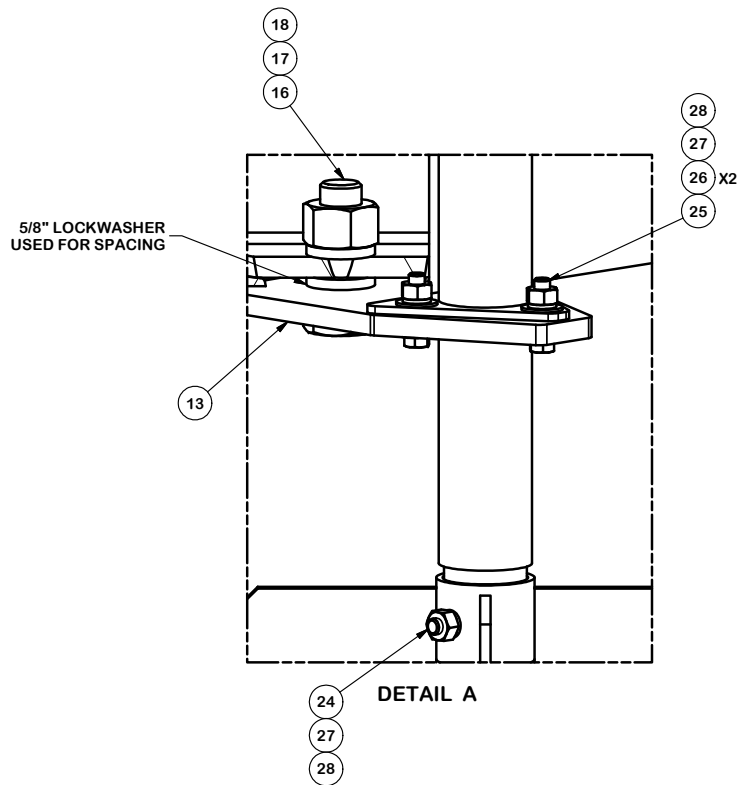
\*\* FOR DETAILS, SEE PAGE 2 \*\*

**TOLERANCE NOTES**  
 TOLERANCES ON DIMENSIONS, UNLESS OTHERWISE NOTED ARE:  
 SAWED, SHEARED AND GAS CUT EDGES ( $\pm 0.030"$ )  
 DRILLED AND GAS CUT HOLES ( $\pm 0.030"$ ) - NO CONING OF HOLES  
 LASER CUT EDGES AND HOLES ( $\pm 0.010"$ ) - NO CONING OF HOLES  
 BENDS ARE  $\pm 1/2$  DEGREE  
 ALL OTHER MACHINING ( $\pm 0.030"$ )  
 ALL OTHER ASSEMBLY ( $\pm 0.060"$ )

PROPRIETARY NOTE:  
 THE DATA AND TECHNIQUES CONTAINED IN THIS DRAWING ARE PROPRIETARY INFORMATION OF VALMONT INDUSTRIES AND CONSIDERED A TRADE SECRET. ANY USE OR DISCLOSURE WITHOUT THE CONSENT OF VALMONT INDUSTRIES IS STRICTLY PROHIBITED.

DESCRIPTION		4' X 4' MODULAR STEP OVER WITH JACK LEGS, HANDRAIL AND 2 STEPS	
CPD NO.	DRAWN BY	ENG. APPROVAL	
	CEK 8/1/2016		
CLASS	SUB	DRAWING USAGE	CHECKED BY
81	02	CUSTOMER	BMC 8/2/2016

<p>Engineering Support Team: 1-888-753-7446</p> <p>A valmont COMPANY</p>	Locations: New York, NY Atlanta, GA Los Angeles, CA Plymouth, IN Salem, OR Dallas, TX
	<p>PART NO. <b>MSO44-4JH16S2</b></p> <p>DWG. NO. <b>MSO44-4JH10S2</b></p>



**TOLERANCE NOTES**

**TOLERANCES ON DIMENSIONS, UNLESS OTHERWISE NOTED ARE:  
SAWED, SHEARED AND GAS CUT EDGES ( $\pm 0.030"$ )  
DRILLED AND GAS CUT HOLES ( $\pm 0.030"$ ) - NO CONING OF HOLES  
LASER CUT EDGES AND HOLES ( $\pm 0.010"$ ) - NO CONING OF HOLES  
BENDS ARE  $\pm 1/2$  DEGREE  
ALL OTHER MACHINING ( $\pm 0.030"$ )  
ALL OTHER ASSEMBLY ( $\pm 0.060"$ )**

**PROPRIETARY NOTE:  
THE DATA AND TECHNIQUES CONTAINED IN THIS DRAWING ARE PROPRIETARY INFORMATION OF VALMONT INDUSTRIES AND CONSIDERED A TRADE SECRET. ANY USE OR DISCLOSURE WITHOUT THE CONSENT OF VALMONT INDUSTRIES IS STRICTLY PROHIBITED.**

**DESCRIPTION**

**4' X 4' MODULAR STEP OVER  
WITH JACK LEGS, HANDRAIL AND 2 STEPS**

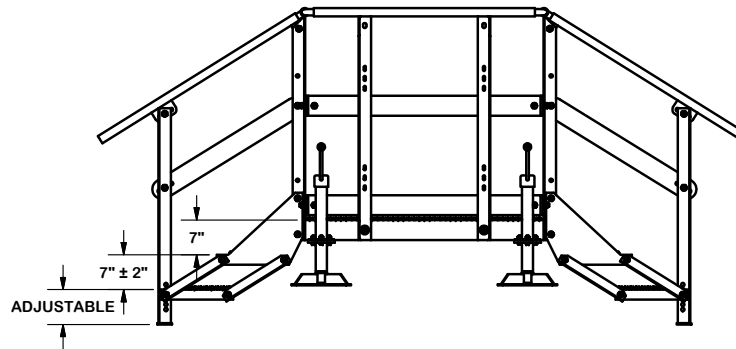
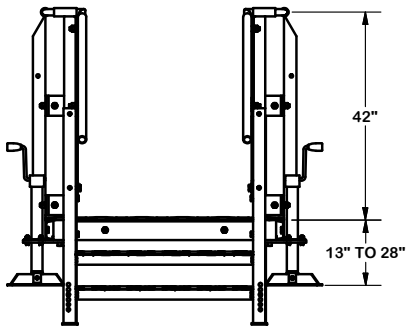
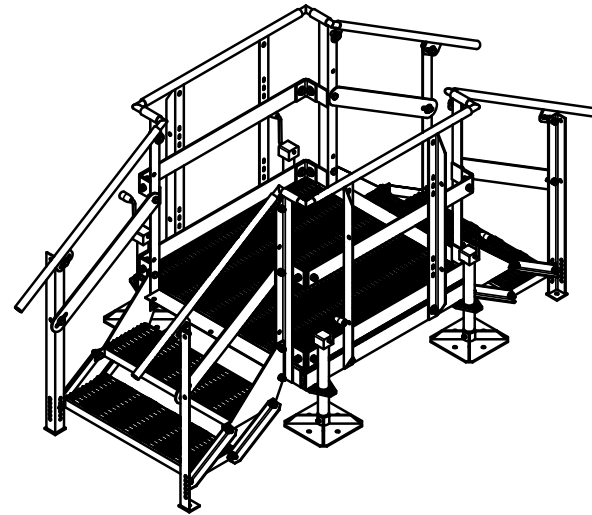
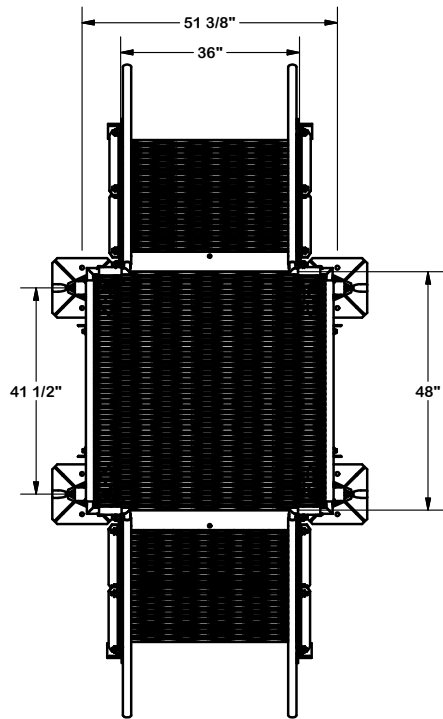
CPD NO.	DRAWN BY CEK	8/1/2016	ENG. APPROVAL
CLASS 81	SUB 02	DRAWING USAGE CUSTOMER	CHECKED BY BMC
			8/2/2016



Engineering  
Support Team:  
1-888-753-7446

Locations:  
New York, NY  
Atlanta, GA  
Los Angeles, CA  
Plymouth, IN  
Salem, OR  
Dallas, TX

PART NO.	<b>MSO44-4JH16S2</b>
DWG. NO.	<b>MSO44-4JH10S2</b>



**TOLERANCE NOTES**

**TOLERANCES ON DIMENSIONS, UNLESS OTHERWISE NOTED ARE:  
 SAWED, SHEARED AND GAS CUT EDGES ( $\pm 0.030$ " )  
 DRILLED AND GAS CUT HOLES ( $\pm 0.030$ " ) - NO CONING OF HOLES  
 LASER CUT EDGES AND HOLES ( $\pm 0.010$ " ) - NO CONING OF HOLES  
 BENDS ARE  $\pm 1/2$  DEGREE  
 ALL OTHER MACHINING ( $\pm 0.030$ " )  
 ALL OTHER ASSEMBLY ( $\pm 0.060$ " )**

**PROPRIETARY NOTE:  
 THE DATA AND TECHNIQUES CONTAINED IN THIS DRAWING ARE PROPRIETARY INFORMATION OF VALMONT  
 INDUSTRIES AND CONSIDERED A TRADE SECRET. ANY USE OR DISCLOSURE WITHOUT THE CONSENT OF  
 VALMONT INDUSTRIES IS STRICTLY PROHIBITED.**

DESCRIPTION  
**4' X 4' MODULAR STEP OVER  
 WITH JACK LEGS, HANDRAIL AND 2 STEPS**

**SITE PRO 1**  
 A valmont COMPANY  
 Engineering Support Team:  
 1-888-753-7446  
 Locations:  
 New York, NY  
 Atlanta, GA  
 Los Angeles, CA  
 Plymouth, IN  
 Salem, OR  
 Dallas, TX

CPD NO.	DRAWN BY CEK	8/1/2016	ENG. APPROVAL
CLASS 81	SUB 02	DRAWING USAGE CUSTOMER	CHECKED BY BMC
			8/2/2016

PART NO.	<b>MSO44-4JH16S2</b>	PAGE 3 OF 3
DWG. NO.	<b>MSO44-4JH10S2</b>	