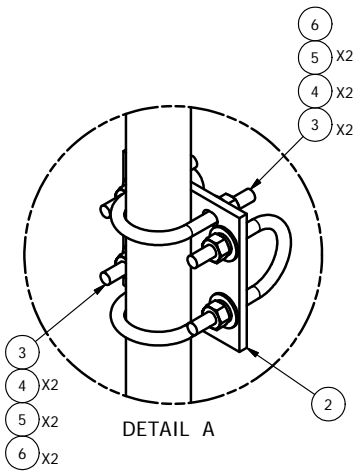
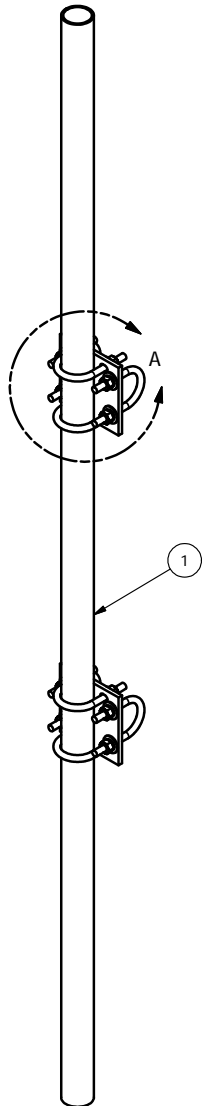


| PARTS LIST | | | | | | |
|------------|-----|----------|---|--------|-------------|---------|
| ITEM | QTY | PART NO. | PART DESCRIPTION | LENGTH | UNIT WT. | NET WT. |
| 1 | 1 | P296 | 2-3/8" X 96" SCH. 40 GALVANIZED PIPE | 96 in | 30.76 | 30.76 |
| 2 | 2 | SCX1 | CROSSOVER PLATE 2-3/8" X 2-3/8" | | 3.71 | 7.42 |
| 3 | 8 | X-UB1212 | 1/2" X 2-1/2" X 4-1/2" X 2" U-BOLT (HDG.) | | 0.63 | 5.00 |
| 4 | 16 | G12FW | 1/2" HDG USS FLATWASHER | | 0.03 | 0.55 |
| 5 | 16 | G12LW | 1/2" HDG LOCKWASHER | | 0.01 | 0.22 |
| 6 | 16 | G12NUT | 1/2" HDG HEAVY 2H HEX NUT | | 0.07 | 1.15 |
| | | | | | TOTAL WT. # | 45.09 |



TOLERANCE NOTE
TOLERANCES ON DIMENSIONS, UNLESS OTHERWISE NOTED ARE:
SAWED, SHEARED AND GAS CUT EDGES (± 0.030 ")
DRILLED AND GAS CUT HOLES (± 0.030 ") - NO CONING OF HOLES
LASER CUT EDGES AND HOLES (± 0.010 ") - NO CONING OF HOLES
BENDS ARE $\pm 1/2$ DEGREE - ALL OTHER MACHINING (± 0.030 ")
ALL OTHER ASSEMBLY (± 0.060 ")

PROPRIETARY NOTE
 THE DATA AND TECHNIQUES CONTAINED IN THIS DRAWING ARE PROPRIETARY INFORMATION OF VALMONT INDUSTRIES AND CONSIDERED A TRADE SECRET. ANY USE OR DISCLOSURE WITHOUT THE CONSENT OF VALMONT INDUSTRIES IS STRICTLY PROHIBITED.

| | | | |
|---------------|------------|----------------|----------|
| DESCRIPTION | | PIPE MOUNT KIT | |
| | | 96" | |
| DRAWN BY | CPD NO. | DRAWING USAGE | PART NO. |
| CEK | 2/2/2012 | CUSTOMER | P296-K |
| ENG. APPROVAL | CHECKED BY | DWG. NO. | P296-K |
| | BMC | 2/2/2012 | |

| | |
|-------------------|---|
| | Locations: New York, NY Atlanta, GA Los Angeles, CA Plymouth, IN Salem, OR Dallas, TX |
| | Engineering Support Team: 1-888-753-7446 |
| A valmont COMPANY | |