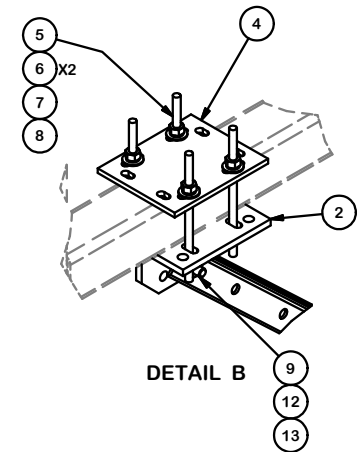
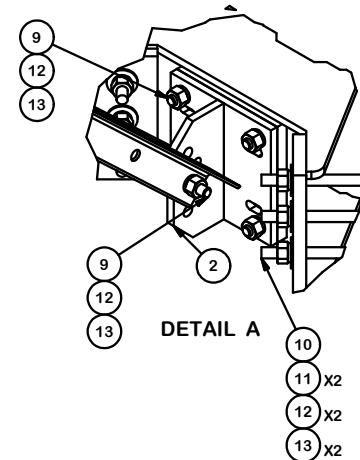


PARTS LIST						
ITEM	QTY	PART NO.	PART DESCRIPTION	LENGTH	UNIT WT.	NET WT.
1	4	X-162290	QUAD BRACKET		54.48	217.94
2	8	X-TBW	T-BRACKET WELDMENT		13.60	108.80
3	8	X-254923	PLATFORM REINFORCEMENT KIT ANGLE	84 in	22.83	182.66
4	4	SCX4	CROSSOVER PLATE	8 1/2 in	6.02	24.09
5	16	G12R-10	1/2" x 10" GALV. THREADED ROD		0.59	9.37
6	32	G12FW	1/2" HDG USS FLATWASHER	3/32 in	0.03	1.09
7	32	G12LW	1/2" HDG LOCKWASHER	1/8 in	0.01	0.44
8	32	G12NUT	1/2" HDG HEAVY 2H HEX NUT		0.07	2.29
9	24	A582114	5/8" x 2-1/4" HDG A325 HEX BOLT	2 1/4 in	0.31	7.50
10	12	G58R-24	5/8" x 24" THREADED ROD (HDG.)		2.09	25.09
10	12	G58R-48	5/8" x 48" THREADED ROD (HDG.)		4.18	50.18
11	24	G58FW	5/8" HDG USS FLATWASHER	1/8 in	0.07	1.69
12	48	G58LW	5/8" HDG LOCKWASHER		0.03	1.25
13	48	G58NUT	5/8" HDG HEAVY 2H HEX NUT		0.13	6.23
					TOTAL WT. #	676.48



REV	DESCRIPTION OF REVISIONS	CPD	BY	DATE
C	CHANGED X-253992 TO X-TBW		CEK	9/19/2018
B	CHANGED B12065 TO G12R-10 AND UPDATED HARDWARE		MS	12/18/2015
A	CHANGED ALL 5/8" BOLTS TO A582114		CEK	10/1/2015
REVISION HISTORY				

**TOLERANCE NOTES**  
 TOLERANCES ON DIMENSIONS, UNLESS OTHERWISE NOTED ARE:  
 SAWED, SHEARED AND GAS CUT EDGES ( $\pm 0.030"$ )  
 DRILLED AND GAS CUT HOLES ( $\pm 0.030"$ ) - NO CONING OF HOLES  
 LASER CUT EDGES AND HOLES ( $\pm 0.010"$ ) - NO CONING OF HOLES  
 BENDS ARE  $\pm 1/2$  DEGREE  
 ALL OTHER MACHINING ( $\pm 0.030"$ )  
 ALL OTHER ASSEMBLY ( $\pm 0.060"$ )

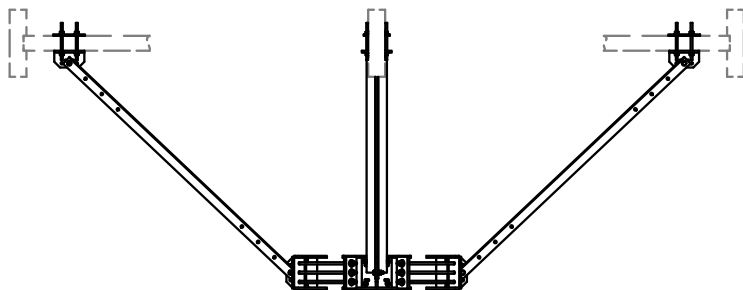
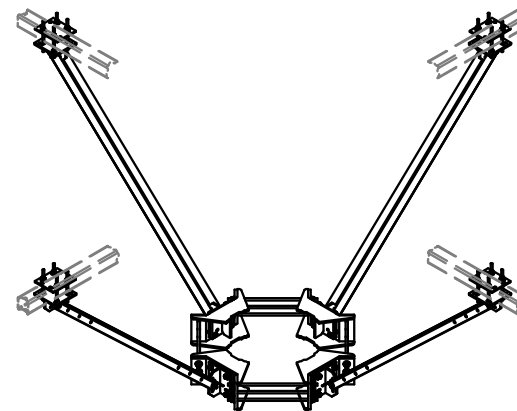
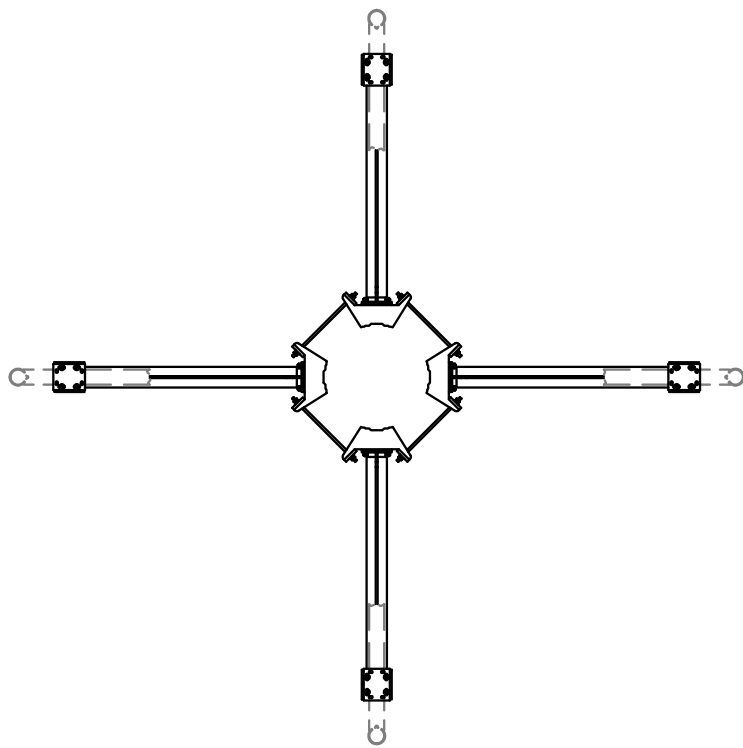
PROPRIETARY NOTE:  
 THE DATA AND TECHNIQUES CONTAINED IN THIS DRAWING ARE PROPRIETARY INFORMATION OF VALMONT INDUSTRIES AND CONSIDERED A TRADE SECRET. ANY USE OR DISCLOSURE WITHOUT THE CONSENT OF VALMONT INDUSTRIES IS STRICTLY PROHIBITED.

DESCRIPTION			
PLATFORM REINFORCEMENT KIT ON A 12" TO 60" POLE 7° ANGLE			
CPD NO.	DRAWN BY	ENG. APPROVAL	
	CEK 1/22/2015		
CLASS	SUB	DRAWING USAGE	CHECKED BY
81	01	CUSTOMER	BMC 1/6/2016

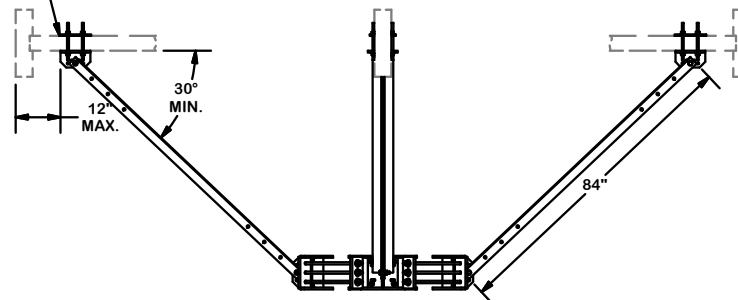
Engineering Support Team:  
1-888-753-7446

Locations:  
New York, NY  
Atlanta, GA  
Los Angeles, CA  
Plymouth, IN  
Salem, OR  
Dallas, TX

PART NO.	PQ-1245L	1 OF 2
DWG. NO.	PQ-1245L	



FITS UP TO 4" ROUND OR SQUARE TUBES



REV	DESCRIPTION OF REVISIONS	CPD	BY	DATE
C	CHANGED X-253992 TO X-TBW		CEK	9/19/2018
B	CHANGED B12065 TO G12R-10 AND UPDATED HARDWARE		MS	12/18/2015
A	CHANGED ALL 5/8" BOLTS TO A582114		CEK	10/1/2015
REVISION HISTORY				

**TOLERANCE NOTES**  
 TOLERANCES ON DIMENSIONS, UNLESS OTHERWISE NOTED ARE:  
 SAWED, SHEARED AND GAS CUT EDGES ( $\pm 0.030"$ )  
 DRILLED AND GAS CUT HOLES ( $\pm 0.030"$ ) - NO CONING OF HOLES  
 LASER CUT EDGES AND HOLES ( $\pm 0.010"$ ) - NO CONING OF HOLES  
 BENDS ARE  $\pm 1/2$  DEGREE  
 ALL OTHER MACHINING ( $\pm 0.030"$ )  
 ALL OTHER ASSEMBLY ( $\pm 0.060"$ )

PROPRIETARY NOTE:  
 THE DATA AND TECHNIQUES CONTAINED IN THIS DRAWING ARE PROPRIETARY INFORMATION OF VALMONT INDUSTRIES AND CONSIDERED A TRADE SECRET. ANY USE OR DISCLOSURE WITHOUT THE CONSENT OF VALMONT INDUSTRIES IS STRICTLY PROHIBITED.

DESCRIPTION		DRAWING USAGE	
PLATFORM REINFORCEMENT KIT ON A 12" TO 60" POLE 7" ANGLE		CLASS	SUB
CPD NO.	DRAWN BY	81	01
	CEK 1/22/2015	DRAWING USAGE	CUSTOMER
ENG. APPROVAL	CHECKED BY	BMC	1/6/2016

 A valmont COMPANY	Locations: New York, NY Atlanta, GA Los Angeles, CA Plymouth, IN Salem, OR Dallas, TX	Engineering Support Team: 1-888-753-7446
	PART NO. PQ-1245L	
DWG. NO. PQ-1245L		PAGE 2 OF 2