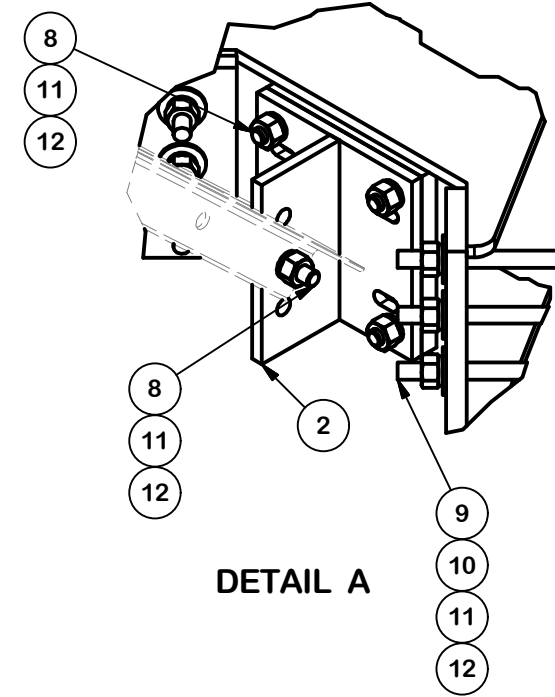
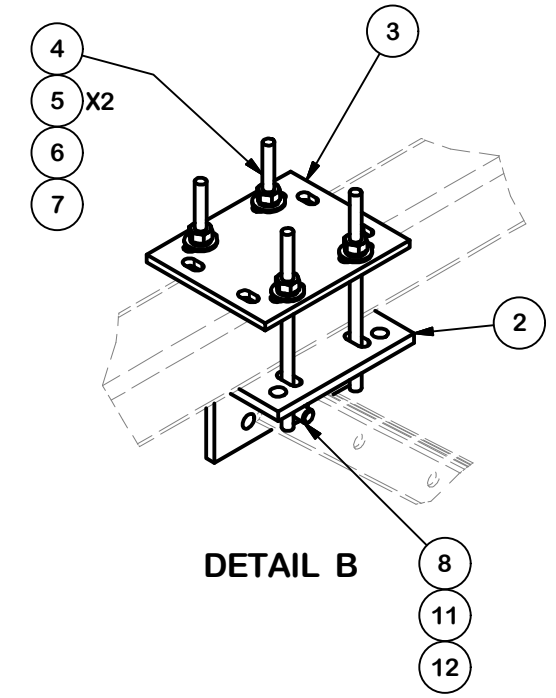


PARTS LIST						
ITEM	QTY	PART NO.	PART DESCRIPTION	LENGTH	UNIT WT.	NET WT.
1	4	X-162290	QUAD BRACKET		54.48	217.94
2	8	X-253992	T-BRACKET FOR REINFORCEMENT KIT		13.55	108.36
3	4	SCX4	CROSSOVER PLATE	8 1/2 in	6.02	24.09
4	16	G12R-10	1/2" x 10" GALV. THREADED ROD		0.59	9.37
5	32	G12FW	1/2" HDG USS FLATWASHER	3/32 in	0.03	1.09
6	32	G12LW	1/2" HDG LOCKWASHER	1/8 in	0.01	0.44
7	32	G12NUT	1/2" HDG HEAVY 2H HEX NUT		0.07	2.29
8	24	A582114	5/8" x 2-1/4" HDG A325 HEX BOLT	2 1/4 in	0.31	7.50
9	12	G58R-48	5/8" x 48" THREADED ROD (HDG.)	48 in	0.40	4.79
9	12	G58R-24	5/8" x 24" THREADED ROD (HDG.)	24 in	0.40	4.79
10	24	G58FW	5/8" HDG USS FLATWASHER	1/8 in	0.07	1.69
11	48	G58LW	5/8" HDG LOCKWASHER		0.03	1.25
12	48	G58NUT	5/8" HDG HEAVY 2H HEX NUT		0.13	6.23
					TOTAL WT. #	455.53



X2
X2
X2



TOLERANCE NOTES
 TOLERANCES ON DIMENSIONS, UNLESS OTHERWISE NOTED ARE:
 SAWED, SHEARED AND GAS CUT EDGES (± 0.030")
 DRILLED AND GAS CUT HOLES (± 0.030") - NO CONING OF HOLES
 LASER CUT EDGES AND HOLES (± 0.010") - NO CONING OF HOLES
 BENDS ARE ± 1/2 DEGREE
 ALL OTHER MACHINING (± 0.030")
 ALL OTHER ASSEMBLY (± 0.060")

PROPRIETARY NOTE:
 THE DATA AND TECHNIQUES CONTAINED IN THIS DRAWING ARE PROPRIETARY INFORMATION OF VALMONT INDUSTRIES AND CONSIDERED A TRADE SECRET. ANY USE OR DISCLOSURE WITHOUT THE CONSENT OF VALMONT INDUSTRIES IS STRICTLY PROHIBITED.

DESCRIPTION
**PLATFORM REINFORCEMENT KIT
 ON A 12" TO 60" POLE
 (NO ANGLE)**

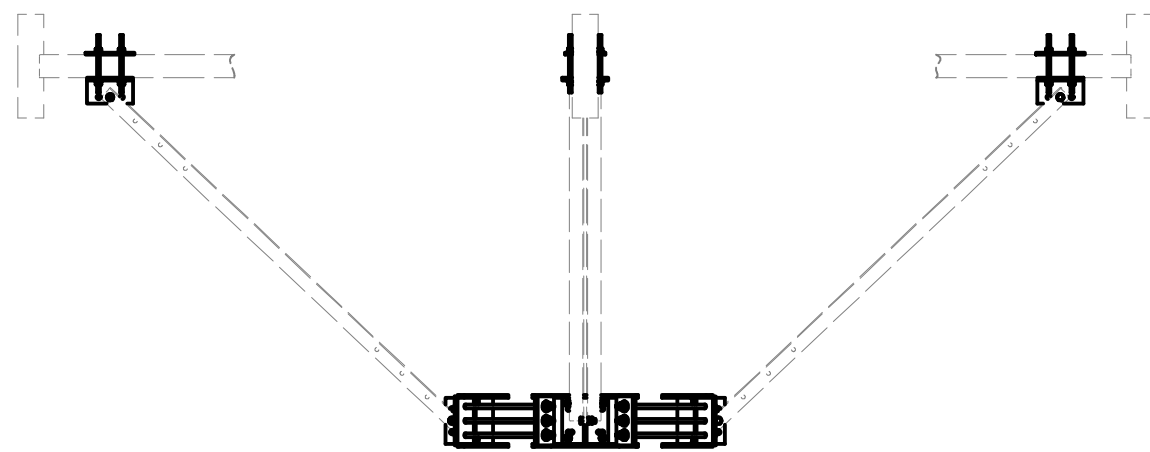
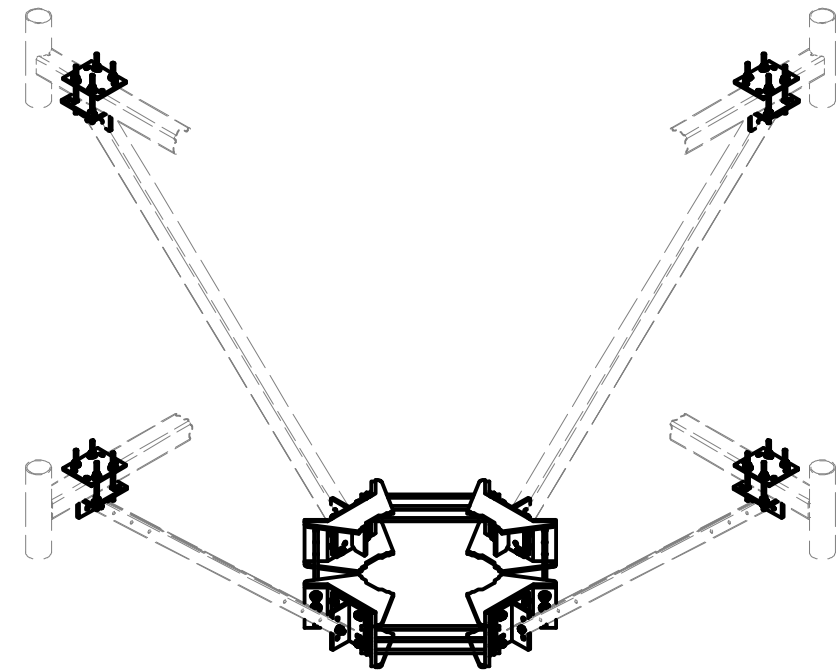
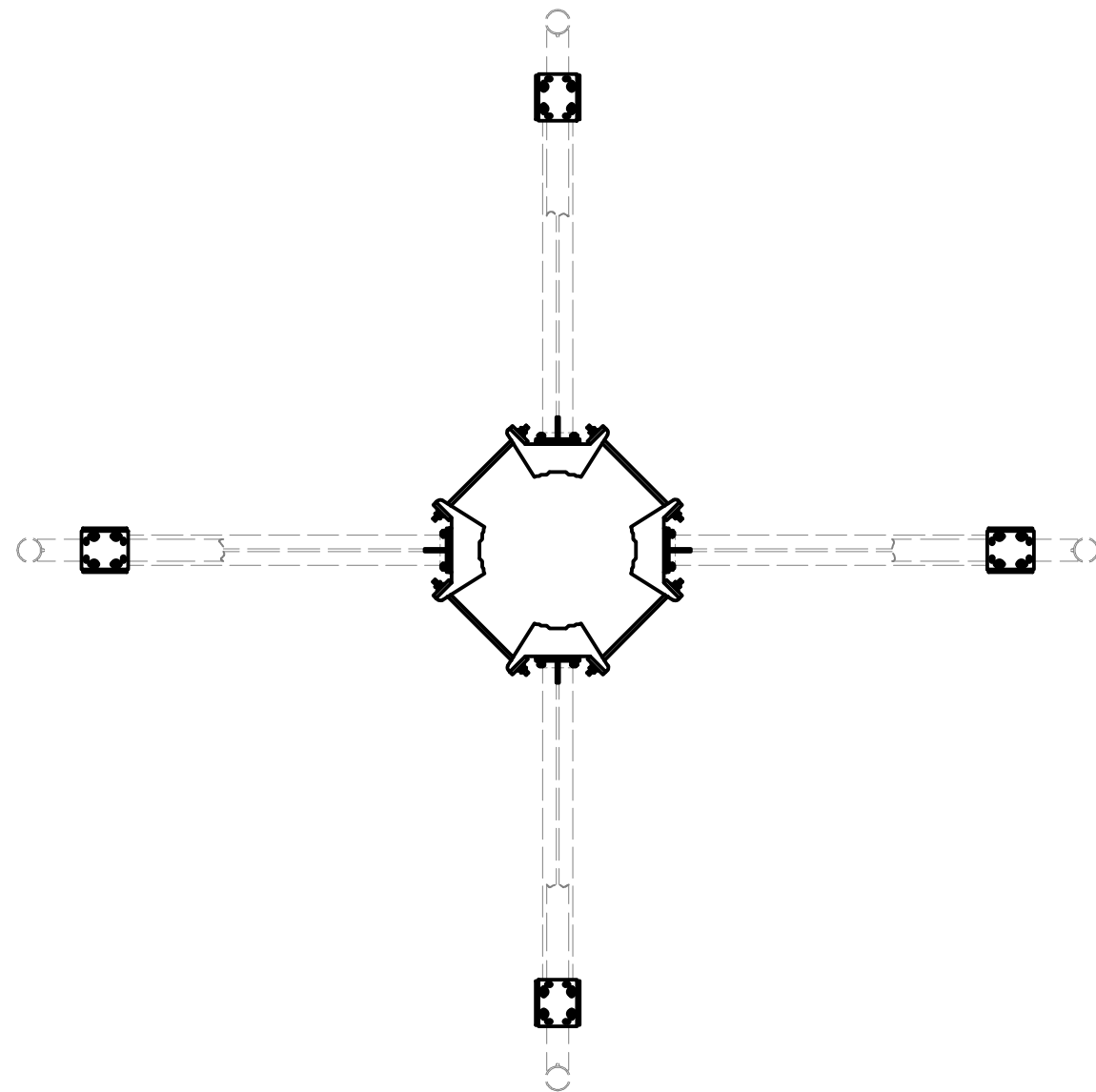
CPD NO. SP1	DRAWN BY CSL 1/26/2018	ENG. APPROVAL 3RD PARTY
CLASS 87	SUB 02	DRAWING USAGE CUSTOMER
		CHECKED BY BMC 1/29/2018

SITE PRO 1
 A valmont COMPANY

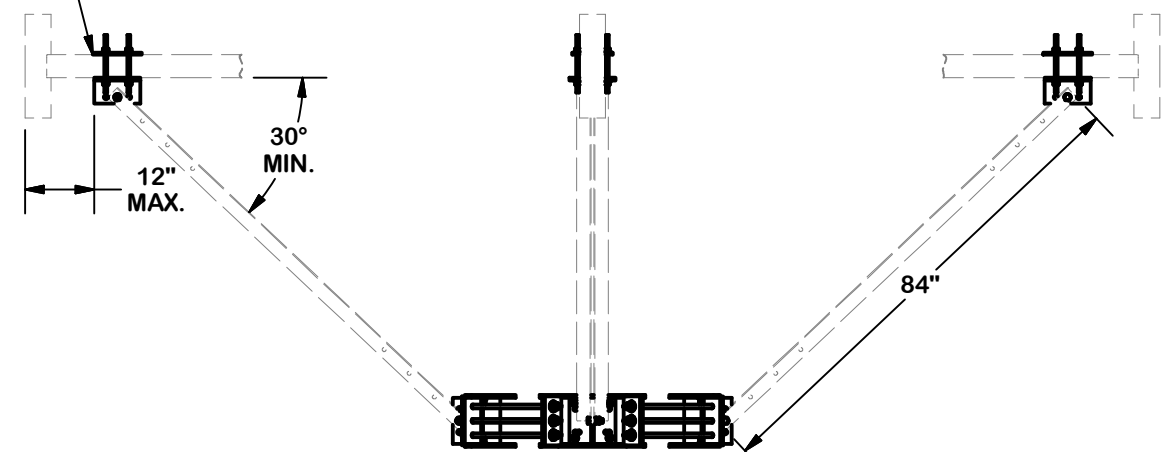
Engineering Support Team:
 1-888-753-7446

Locations:
 New York, NY
 Atlanta, GA
 Los Angeles, CA
 Plymouth, IN
 Salem, OR
 Dallas, TX

PART NO. PQ-NA	PAGE 1 OF 2
DWG. NO. PQ-NA	



FITS UP TO 4" ROUND OR SQUARE TUBES



TOLERANCE NOTES

TOLERANCES ON DIMENSIONS, UNLESS OTHERWISE NOTED ARE:
 SAWED, SHEARED AND GAS CUT EDGES ($\pm 0.030''$)
 DRILLED AND GAS CUT HOLES ($\pm 0.030''$) - NO CONING OF HOLES
 LASER CUT EDGES AND HOLES ($\pm 0.010''$) - NO CONING OF HOLES
 BENDS ARE $\pm 1/2$ DEGREE
 ALL OTHER MACHINING ($\pm 0.030''$)
 ALL OTHER ASSEMBLY ($\pm 0.060''$)

PROPRIETARY NOTE:
 THE DATA AND TECHNIQUES CONTAINED IN THIS DRAWING ARE PROPRIETARY INFORMATION OF VALMONT INDUSTRIES AND CONSIDERED A TRADE SECRET. ANY USE OR DISCLOSURE WITHOUT THE CONSENT OF VALMONT INDUSTRIES IS STRICTLY PROHIBITED.

DESCRIPTION
**PLATFORM REINFORCEMENT KIT
 ON A 12" TO 60" POLE
 (NO ANGLE)**

CPD NO. SP1	DRAWN BY CSL 1/26/2018	ENG. APPROVAL 3RD PARTY
CLASS 87	SUB 02	DRAWING USAGE CUSTOMER
		CHECKED BY BMC 1/29/2018



Locations:
 New York, NY
 Atlanta, GA
 Los Angeles, CA
 Plymouth, IN
 Salem, OR
 Dallas, TX

Engineering Support Team:
 1-888-753-7446

PART NO. PQ-NA
DWG. NO. PQ-NA