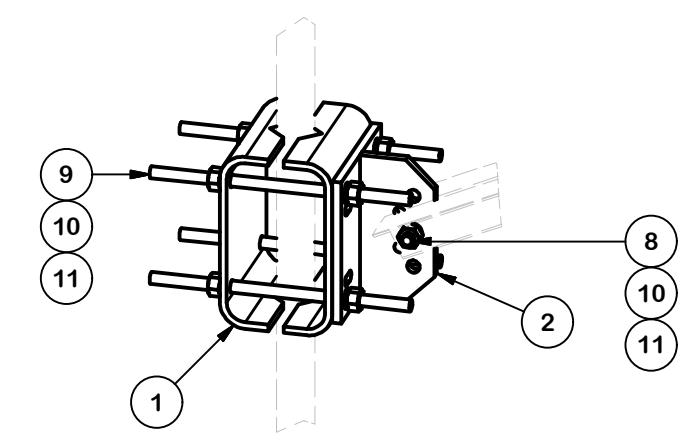
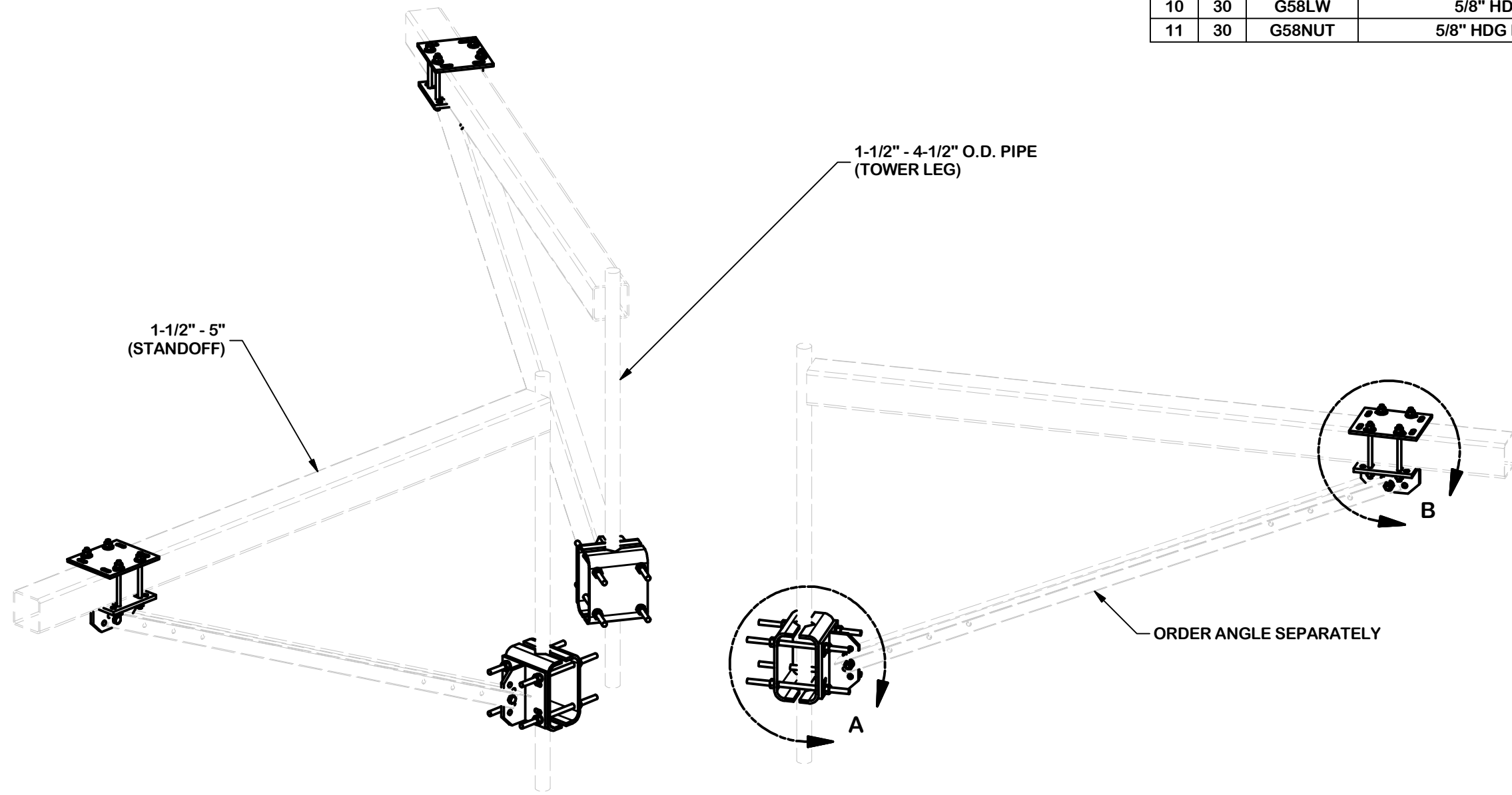
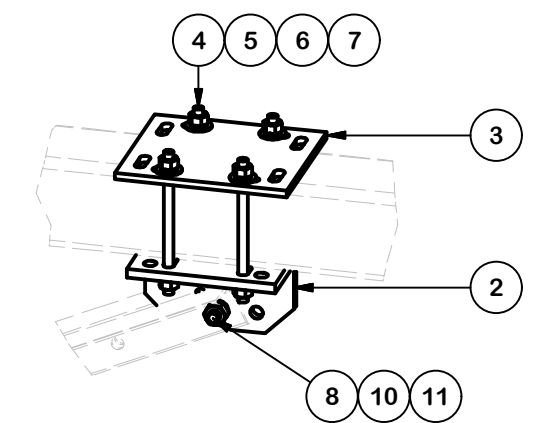


PARTS LIST						
ITEM	QTY	PART NO.	PART DESCRIPTION	LENGTH	UNIT WT.	NET WT.
1	6	X-214130	BENT PLATE V-CLAMP	12 5/8 in	11.43	68.58
2	6	X-TBW	T-BRACKET WELDMENT		13.60	81.60
3	3	SCX3	CROSSOVER PLATE	9 1/4 in	7.19	21.57
4	12	G12R-8	1/2" x 8" THREADED ROD (HDG.)	8 in	0.40	4.79
5	24	G12FW	1/2" HDG USS FLATWASHER	3/32 in	0.03	0.82
6	24	G12LW	1/2" HDG LOCKWASHER	1/8 in	0.01	0.33
7	24	G12NUT	1/2" HDG HEAVY 2H HEX NUT		0.07	1.72
8	6	A5802	5/8" x 2" HDG A325 HEX BOLT	2 in	0.27	1.63
9	12	G58R-14	5/8" x 14" THREADED ROD (HDG.)	14 in	0.40	4.79
10	30	G58LW	5/8" HDG LOCKWASHER		0.03	0.78
11	30	G58NUT	5/8" HDG HEAVY 2H HEX NUT		0.13	3.90
TOTAL WT. #						212.97



DETAIL A



DETAIL B

**TOLERANCE NOTES**  
 TOLERANCES ON DIMENSIONS, UNLESS OTHERWISE NOTED ARE:  
 SAWED, SHEARED AND GAS CUT EDGES ( $\pm 0.030''$ )  
 DRILLED AND GAS CUT HOLES ( $\pm 0.030''$ ) - NO CONING OF HOLES  
 LASER CUT EDGES AND HOLES ( $\pm 0.010''$ ) - NO CONING OF HOLES  
 BENDS ARE  $\pm 1/2$  DEGREE  
 ALL OTHER MACHINING ( $\pm 0.030''$ )  
 ALL OTHER ASSEMBLY ( $\pm 0.060''$ )

PROPRIETARY NOTE:  
 THE DATA AND TECHNIQUES CONTAINED IN THIS DRAWING ARE PROPRIETARY INFORMATION OF VALMONT INDUSTRIES AND CONSIDERED A TRADE SECRET. ANY USE OR DISCLOSURE WITHOUT THE CONSENT OF VALMONT INDUSTRIES IS STRICTLY PROHIBITED.

DESCRIPTION  
**SINGLE ARM STANDOFF  
 REINFORCEMENT KIT  
 (NO ANGLE)**

CPD NO.	DRAWN BY CSL3 5/12/2017	ENG. APPROVAL
CLASS 81	SUB 02	DRAWING USAGE SHOP
CHECKED BY		

**SITE PRO 1**  
 A valmont COMPANY

Engineering Support Team:  
 1-888-753-7446

Locations:  
 New York, NY  
 Atlanta, GA  
 Los Angeles, CA  
 Plymouth, IN  
 Salem, OR  
 Dallas, TX

PART NO. <b>PRK-FMA-NA</b>	PAGE 1 OF 1
DWG. NO. <b>PRK-FMA-NA</b>	