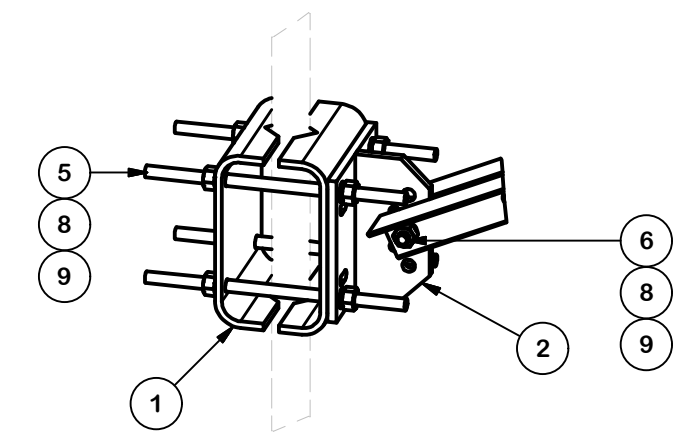
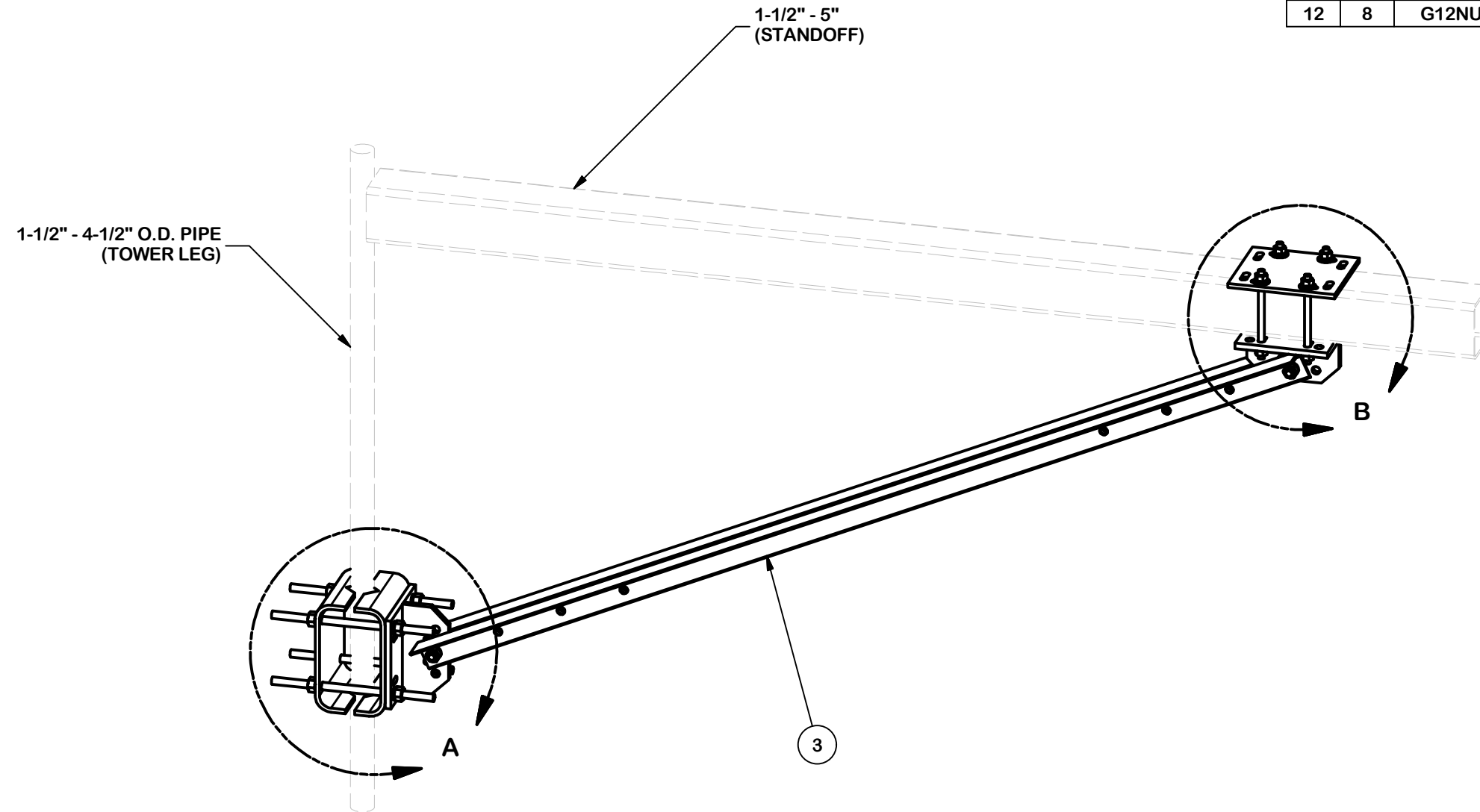
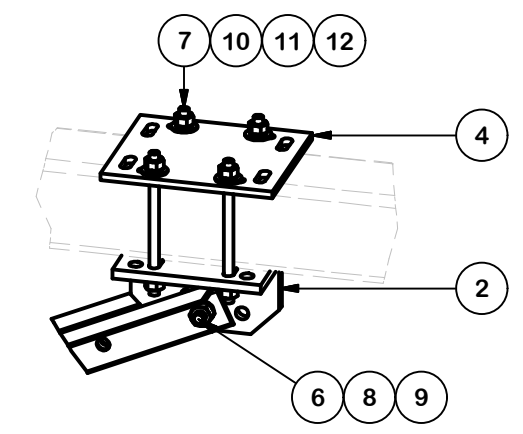


PARTS LIST						
ITEM	QTY	PART NO.	PART DESCRIPTION	LENGTH	UNIT WT.	NET WT.
1	2	X-214130	BENT PLATE V-CLAMP	12 5/8 in	11.43	22.86
2	2	X-TBW	T-BRACKET WELDMENT		13.60	27.20
3	2	X-254923	PLATFORM REINFORCEMENT KIT ANGLE	84 in	22.83	45.67
4	1	SCX3	CROSSOVER PLATE	9 1/4 in	7.19	7.19
5	4	G58R-14	5/8" x 14" THREADED ROD (HDG.)	14 in	0.40	1.60
6	2	A5802	5/8" x 2" HDG A325 HEX BOLT	2 in	0.27	0.54
7	4	G12R-8	1/2" x 8" THREADED ROD (HDG.)	8 in	0.40	1.60
8	10	G58LW	5/8" HDG LOCKWASHER		0.03	0.26
9	10	G58NUT	5/8" HDG HEAVY 2H HEX NUT		0.13	1.30
10	8	G12FW	1/2" HDG USS FLATWASHER	3/32 in	0.03	0.27
11	8	G12LW	1/2" HDG LOCKWASHER	1/8 in	0.01	0.11
12	8	G12NUT	1/2" HDG HEAVY 2H HEX NUT		0.07	0.57
					TOTAL WT. #	119.39



DETAIL A



DETAIL B

TOLERANCE NOTES

TOLERANCES ON DIMENSIONS, UNLESS OTHERWISE NOTED ARE:
 SAWED, SHEARED AND GAS CUT EDGES (± 0.030 "")
 DRILLED AND GAS CUT HOLES (± 0.030 "") - NO CONING OF HOLES
 LASER CUT EDGES AND HOLES (± 0.010 "") - NO CONING OF HOLES
 BENDS ARE $\pm 1/2$ DEGREE
 ALL OTHER MACHINING (± 0.030 "")
 ALL OTHER ASSEMBLY (± 0.060 "")

PROPRIETARY NOTE:
 THE DATA AND TECHNIQUES CONTAINED IN THIS DRAWING ARE PROPRIETARY INFORMATION OF VALMONT INDUSTRIES AND CONSIDERED A TRADE SECRET. ANY USE OR DISCLOSURE WITHOUT THE CONSENT OF VALMONT INDUSTRIES IS STRICTLY PROHIBITED.

DESCRIPTION

SINGLE-ARM STANDOFF REINFORCEMENT KIT

SITE PRO 1

Engineering Support Team:
 1-888-753-7446

Locations:
 New York, NY
 Atlanta, GA
 Los Angeles, CA
 Plymouth, IN
 Salem, OR
 Dallas, TX

A valmont COMPANY

CPD NO. DRAWN BY: CSL3 5/12/2017 ENG. APPROVAL

PART NO. **PRK-FMA1**

CLASS 81 SUB 02 DRAWING USAGE: SHOP CHECKED BY

DWG. NO. **PRK-FMA1**