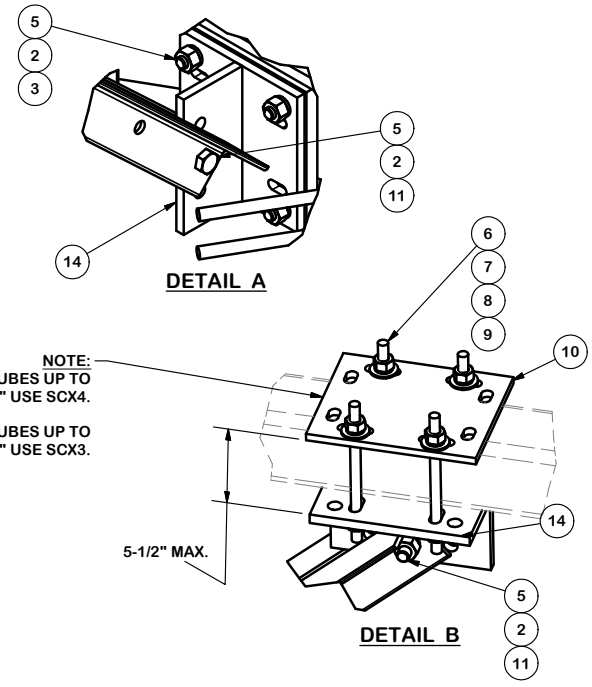


PARTS LIST						
ITEM	QTY	PART NO.	PART DESCRIPTION	LENGTH	UNIT WT.	NET WT.
1	3	X-LWRM	RING MOUNT WELDMNT		68.81	206.42
2	42	G58LW	5/8" HDG LOCKWASHER		0.03	1.10
3	30	A58NUT	5/8" HDG A325 HEX NUT		0.13	3.90
4	9	G58R-24	5/8" x 24" THREADED ROD (HDG.)	24 in	0.40	3.59
4	9	G58R-48	5/8" x 48" THREADED ROD (HDG.)	48 in	0.40	3.59
5	24	A582114	5/8" x 2-1/4" HDG A325 HEX BOLT	2 1/4 in	0.31	7.50
6	12	HS12R-8	1/2" X 8" THREADED ROD (HS)		0.47	5.67
7	24	G12FW	1/2" HDG USS FLATWASHER	3/32 in	0.03	0.82
8	24	G12LW	1/2" HDG LOCKWASHER	1/8 in	0.01	0.33
9	24	G12NUT	1/2" HDG HEAVY 2H HEX NUT		0.07	1.72
10	3	SCX3	CROSSOVER PLATE	9 1/4 in	7.19	21.57
10	3	SCX4	CROSSOVER PLATE	8 1/2 in	6.02	18.06
11	12	G58NUT	5/8" HDG HEAVY 2H HEX NUT		0.13	1.56
12	6	X-104245	1/2" THICK, 11/16" HOLE, ANGLE SPACER		0.52	3.09
13	6	X-260859	KICKER ANGLE FOR PRK-HD	84 in	36.40	218.40
14	6	X-253992	T-BRACKET FOR REINFORCEMENT KIT		13.55	81.27
					TOTAL WT. #	627.86



REV	DESCRIPTION OF REVISIONS	CPD	CEK	DATE
A	ADDED SCX3 PLATE TO KIT	4488	CEK	12/15/2016
REVISION HISTORY				

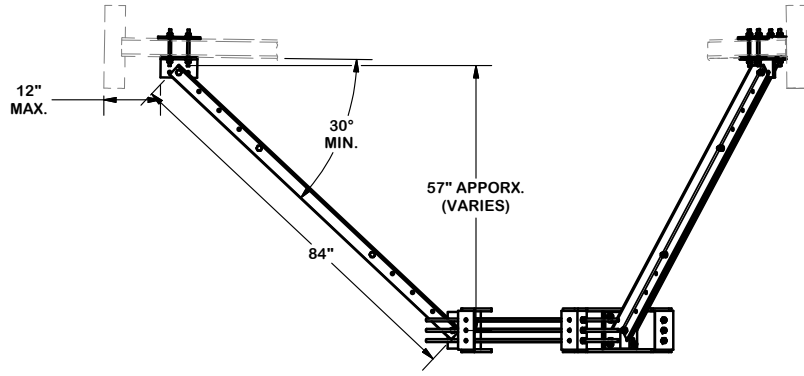
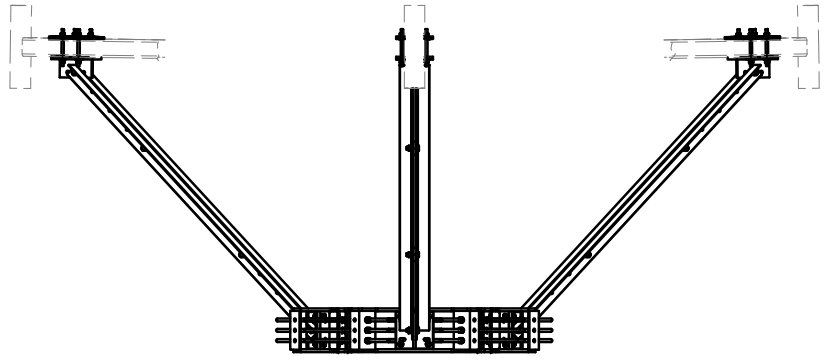
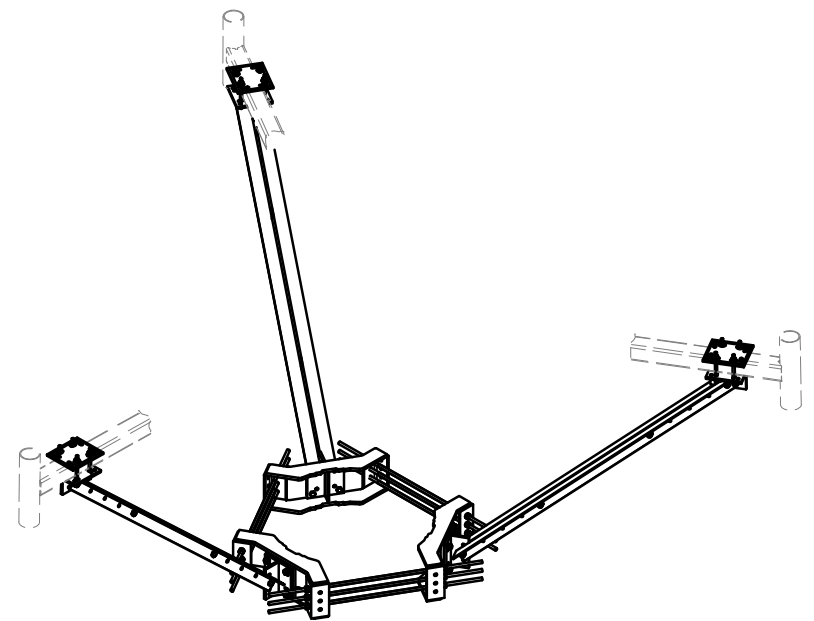
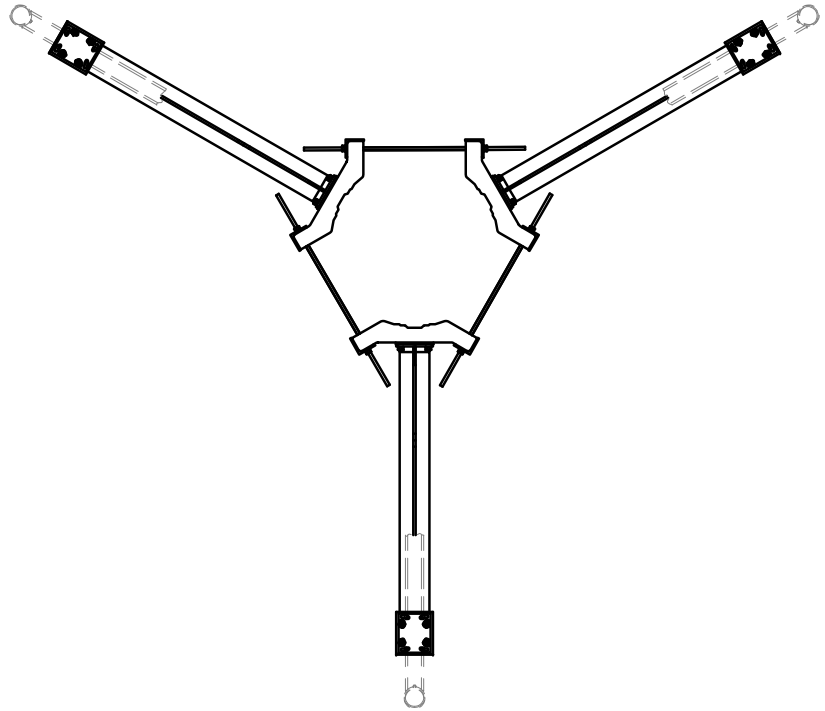
TOLERANCE NOTES

TOLERANCES ON DIMENSIONS, UNLESS OTHERWISE NOTED ARE:
 SAWED, SHEARED AND GAS CUT EDGES ($\pm 0.030"$)
 DRILLED AND GAS CUT HOLES ($\pm 0.030"$) - NO CONING OF HOLES
 LASER CUT EDGES AND HOLES ($\pm 0.010"$) - NO CONING OF HOLES
 BENDS ARE $\pm 1/2$ DEGREE
 ALL OTHER MACHINING ($\pm 0.030"$)
 ALL OTHER ASSEMBLY ($\pm 0.060"$)

PROPRIETARY NOTE:
 THE DATA AND TECHNIQUES CONTAINED IN THIS DRAWING ARE PROPRIETARY INFORMATION OF VALMONT INDUSTRIES AND CONSIDERED A TRADE SECRET. ANY USE OR DISCLOSURE WITHOUT THE CONSENT OF VALMONT INDUSTRIES IS STRICTLY PROHIBITED.

DESCRIPTION		HEAVY DUTY PLATFORM REINFORCEMENT KIT	
CPD NO.	DRAWN BY	ENG. APPROVAL	
4488	CEK 9/16/2015		
CLASS	DRAWING USAGE	CHECKED BY	
81	CUSTOMER	BMC 12/15/2016	

 A valmont COMPANY	Locations: New York, NY Atlanta, GA Los Angeles, CA Plymouth, IN Salem, OR Dallas, TX
	Engineering Support Team: 1-888-753-7446
PART NO.	PRK-HD
DWG. NO.	PRK-HD



REV	DESCRIPTION OF REVISIONS	CPD	BY	DATE
A	ADDED SCX3 PLATE TO KIT	4488	CEK	12/15/2016
REVISION HISTORY				

TOLERANCE NOTES
 TOLERANCES ON DIMENSIONS, UNLESS OTHERWISE NOTED ARE:
 SAWED, SHEARED AND GAS CUT EDGES ($\pm 0.030"$)
 DRILLED AND GAS CUT HOLES ($\pm 0.030"$) - NO CONING OF HOLES
 LASER CUT EDGES AND HOLES ($\pm 0.010"$) - NO CONING OF HOLES
 BENDS ARE $\pm 1/2$ DEGREE
 ALL OTHER MACHINING ($\pm 0.030"$)
 ALL OTHER ASSEMBLY ($\pm 0.060"$)

PROPRIETARY NOTE:
 THE DATA AND TECHNIQUES CONTAINED IN THIS DRAWING ARE PROPRIETARY INFORMATION OF VALMONT INDUSTRIES AND CONSIDERED A TRADE SECRET. ANY USE OR DISCLOSURE WITHOUT THE CONSENT OF VALMONT INDUSTRIES IS STRICTLY PROHIBITED.

DESCRIPTION		DRAWN BY		ENG. APPROVAL
HEAVY DUTY PLATFORM REINFORCEMENT KIT		CEK 9/16/2015		
CPD NO.	4488	DRAWING USAGE	CUSTOMER	CHECKED BY BMC 12/15/2016
CLASS	81	SUB	01	

 A valmont COMPANY	Engineering Support Team: 1-888-753-7446	Locations: New York, NY Atlanta, GA Los Angeles, CA Plymouth, IN Salem, OR Dallas, TX
	PART NO. PRK-HD	DWG. NO. PRK-HD