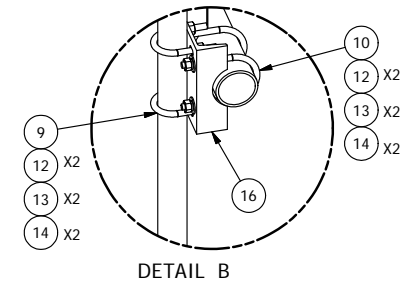
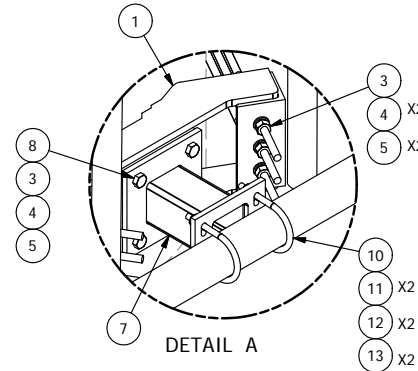


PARTS LIST						
ITEM	QTY	PART NO.	PART DESCRIPTION	LENGTH	UNIT WT.	NET WT.
1	3	X-LWRM	RING MOUNT WELDMENT		68.81	206.42
2	9	G58R-48	5/8" x 48" THREADED ROD (HDG.)		0.40	3.59
2	9	G58R-24	5/8" x 24" THREADED ROD (HDG.)		0.40	3.59
3	30	A58FW	5/8" HDG A325 FLATWASHER		0.03	1.02
4	30	G58LW	5/8" HDG LOCKWASHER		0.03	0.78
5	30	A58NUT	5/8" HDG A325 HEX NUT		0.13	3.90
6	3	P348	3-1/2" X 48" SCH 40 GALVANIZED PIPE	48	31.89	95.68
7	3	X-WWM01	8" STAND-OFF ARM / WALL MOUNT		18.12	54.37
8	12	A582112	5/8" x 2-1/2" HDG A325 HEX BOLT	2.5	0.33	4.01
9	12	X-UB1212	1/2" X 2-1/2" X 4-1/2" X 2" GALV. U-BOLT		0.66	7.88
10	12	X-UB1306	1/2" X 3-5/8" X 6" X 3" GALV U-BOLT		0.83	9.94
11	6	X-UB1358	1/2" X 3-5/8" X 5-1/2" X 3" GALV U-BOLT		0.77	4.63
12	60	G12FW	1/2" HDG USS FLATWASHER		0.03	2.04
13	60	G12LW	1/2" HDG LOCKWASHER		0.01	0.83
14	60	G12NUT	1/2" HDG HEAVY 2H HEX NUT		0.07	4.30
15	6	B	C	D	E	F
16	6	X-SP219	SMALL SUPPORT CROSS PLATE	8.250 in	8.61	51.66

2-3/8" MOUNTING PIPES						
ASSEMBLY "A"	PART NO "B"	PART DESCRIPTION "C"	LENGTH "D"	UNIT WEIGHT "	NET WEIGHT "F"	TOTAL WEIGHT
RDS-263	P263	2 3/8" O.D. VERTICAL MOUNTING PIPE	63"	19.22	115.32	578.11
RDS-272	P272	2 3/8" O.D. VERTICAL MOUNTING PIPE	72"	21.97	131.82	594.61
RDS-284	P284	2 3/8" O.D. VERTICAL MOUNTING PIPE	84"	25.63	153.78	616.57
RDS-296	P296	2 3/8" O.D. VERTICAL MOUNTING PIPE	96"	29.29	175.74	638.53
RDS-2126	P2126	2 3/8" O.D. VERTICAL MOUNTING PIPE	126"	40.75	122.25	585.04



REV	DESCRIPTION OF REVISIONS	CPD	BY	DATE
B	ADDED 126" 2-3/8" ANTENNA MOUNTING PIPES	CEK		6/29/2015
A	REDRAWN IN MDT	KC8		5/22/2012
REV	DESCRIPTION OF REVISIONS	CPD	BY	DATE
REVISION HISTORY				

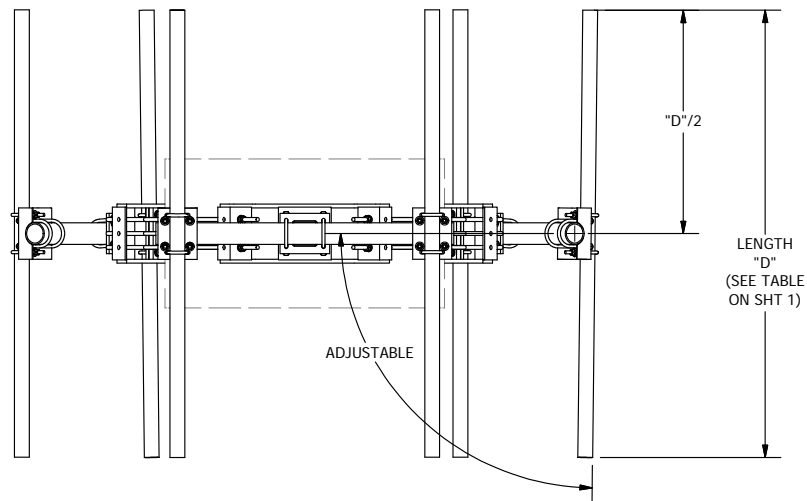
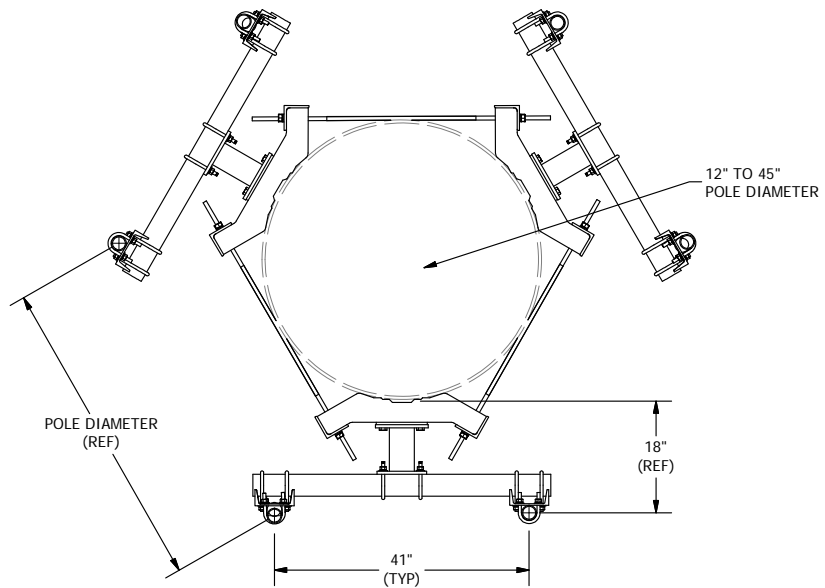
**TOLERANCE NOTES**

**TOLERANCES ON DIMENSIONS, UNLESS OTHERWISE NOTED ARE:  
SAWED, SHEARED AND GAS CUT EDGES ( $\pm 0.030"$ )  
DRILLED AND GAS CUT HOLES ( $\pm 0.030"$ ) - NO CONING OF HOLES  
LASER CUT EDGES AND HOLES ( $\pm 0.010"$ ) - NO CONING OF HOLES  
BENDS ARE  $\pm 1/2$  DEGREE  
ALL OTHER MACHINING ( $\pm 0.030"$ )  
ALL OTHER ASSEMBLY ( $\pm 0.060"$ )**

PROPRIETARY NOTE:  
THE DATA AND TECHNIQUES CONTAINED IN THIS DRAWING ARE PROPRIETARY INFORMATION OF VALMONT INDUSTRIES AND CONSIDERED A TRADE SECRET. ANY USE OR DISCLOSURE WITHOUT THE CONSENT OF VALMONT INDUSTRIES IS STRICTLY PROHIBITED.

DESCRIPTION			
<b>MONOPOLE DOUBLE SUPPORT ARM KIT</b>			
CPD NO.	DRAWN BY	ENG. APPROVAL	
4546	CEK	7/13/2009	
CLASS	SUB	DRAWING USAGE	CHECKED BY
81	01	CUSTOMER	CEK 8/20/2012

SITE PRO 1		Locations:
A valmont COMPANY		New York, NY Atlanta, GA Los Angeles, CA Plymouth, IN Salem, OR Dallas, TX
Engineering Support Team: 1-888-753-7446		
PART NO.	SEE ASSEMBLY "A"	
DWG. NO.	RDS-2XX	



**TOLERANCE NOTES**

**TOLERANCES ON DIMENSIONS, UNLESS OTHERWISE NOTED ARE:  
 SAWED, SHEARED AND GAS CUT EDGES ( $\pm 0.030$ )  
 DRILLED AND GAS CUT HOLES ( $\pm 0.030$ ) - NO CONING OF HOLES  
 LASER CUT EDGES AND HOLES ( $\pm 0.010$ ) - NO CONING OF HOLES  
 BENDS ARE  $\pm 1/2$  DEGREE  
 ALL OTHER MACHINING ( $\pm 0.030$ )  
 ALL OTHER ASSEMBLY ( $\pm 0.060$ )**

**PROPRIETARY NOTE:  
 THE DATA AND TECHNIQUES CONTAINED IN THIS DRAWING ARE PROPRIETARY INFORMATION OF VALMONT  
 INDUSTRIES AND CONSIDERED A TRADE SECRET. ANY USE OR DISCLOSURE WITHOUT THE CONSENT OF  
 VALMONT INDUSTRIES IS STRICTLY PROHIBITED.**

DESCRIPTION  
**MONOPOLE  
 DOUBLE SUPPORT  
 ARM KIT**

CPD NO. <b>4546</b>	DRAWN BY <b>CEK 7/13/2009</b>	ENG. APPROVAL
CLASS <b>81</b>	SUB <b>01</b>	DRAWING USAGE <b>CUSTOMER</b>
CHECKED BY <b>CEK 8/20/2012</b>		



Locations:  
 New York, NY  
 Atlanta, GA  
 Los Angeles, CA  
 Plymouth, IN  
 Salem, OR  
 Dallas, TX

Engineering  
 Support Team:  
 1-888-753-7446

PART NO. <b>SEE ASSEMBLY "A"</b>	PAGE <b>2 OF 2</b>
DWG. NO. <b>RDS-2XX</b>	

<b>A</b>	<b>REDRAWN IN INV</b>		<b>KC8</b>	<b>5/22/2012</b>
REV	DESCRIPTION OF REVISIONS	CPD	BY	DATE
REVISION HISTORY				