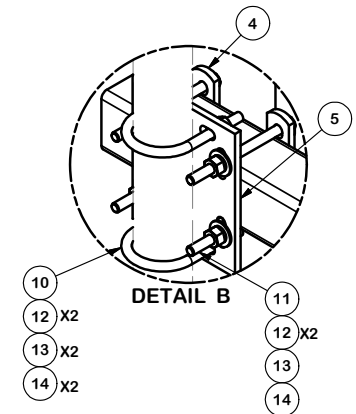
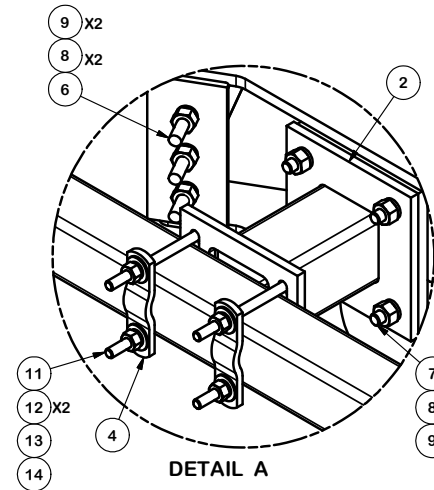


PARTS LIST						
ITEM	QTY	PART NO.	PART DESCRIPTION	LENGTH	UNIT WT.	NET WT.
1	3	X-LWRM	RING MOUNT WELDMENT		68.81	206.42
2	3	X-WWM01	8" STAND-OFF ARM / WALL MOUNT		18.12	54.37
3	3	SQ360	3 1/2" X 60" SQUARE TUBE	60 in	43.23	129.70
4	18	X-100064	CLAMP (4" V-CLAMP) GALVANIZED		0.91	16.43
5	6	SCX4	CROSSOVER PLATE	8 1/2 in	6.02	36.13
6	9	G58R-14	5/8" x 14" THREADED ROD (HDG.)		0.40	3.59
6	9	G58R-24	5/8" x 24" THREADED ROD (HDG.)	24 in	0.40	3.59
7	12	A582112	5/8" x 2-1/2" HDG A325 HEX BOLT	2 1/2 in	0.33	4.01
8	30	G58LW	5/8" HDG LOCKWASHER		0.03	0.78
9	30	A58NUT	5/8" HDG A325 HEX NUT		0.13	3.90
10	12	X-UB1300	1/2" X 3" X 5" X 2" U-BOLT (HDG.)		0.70	8.36
10	12	X-UB1212	1/2" X 2-1/2" X 4-1/2" X 2" U-BOLT (HDG.)		0.63	7.50
11	36	G12065	1/2" x 6-1/2" HDG HEX BOLT GR5 FULL THREAD	6 1/2 in	0.41	14.74
12	96	G12FW	1/2" HDG USS FLATWASHER	3/32 in	0.03	3.27
13	60	G12LW	1/2" HDG LOCKWASHER	1/8 in	0.01	0.83
14	60	G12NUT	1/2" HDG HEAVY 2H HEX NUT		0.07	4.30
					TOTAL WT. #	520.55



TOLERANCE NOTES

TOLERANCES ON DIMENSIONS, UNLESS OTHERWISE NOTED ARE:
 SAWED, SHEARED AND GAS CUT EDGES ($\pm 0.030"$)
 DRILLED AND GAS CUT HOLES ($\pm 0.030"$) - NO CONING OF HOLES
 LASER CUT EDGES AND HOLES ($\pm 0.010"$) - NO CONING OF HOLES
 BENDS ARE $\pm 1/2$ DEGREE
 ALL OTHER MACHINING ($\pm 0.030"$)
 ALL OTHER ASSEMBLY ($\pm 0.060"$)

PROPRIETARY NOTE:
 THE DATA AND TECHNIQUES CONTAINED IN THIS DRAWING ARE PROPRIETARY INFORMATION OF VALMONT INDUSTRIES AND CONSIDERED A TRADE SECRET. ANY USE OR DISCLOSURE WITHOUT THE CONSENT OF VALMONT INDUSTRIES IS STRICTLY PROHIBITED.

DESCRIPTION
**MONOPOLE
 DOUBLE SUPPORT
 ARM KIT**

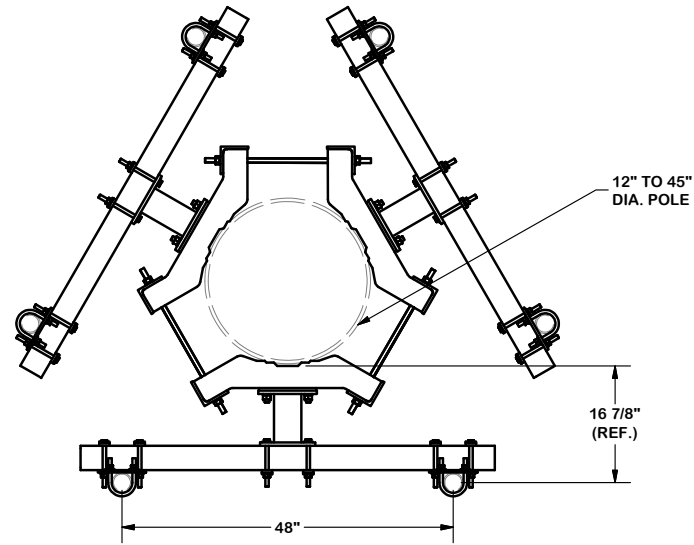
CPD NO.	DRAWN BY CEK 4/28/2017	ENG. APPROVAL
CLASS 81	SUB 01	DRAWING USAGE CUSTOMER
	CHECKED BY BMC 5/12/2017	



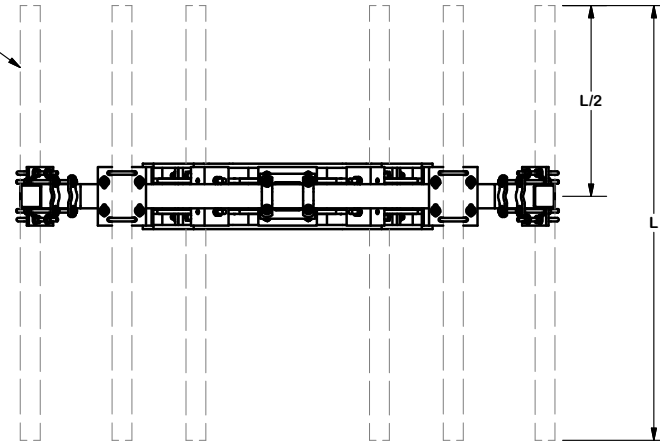
Engineering Support Team:
 1-888-753-7446

Locations:
 New York, NY
 Atlanta, GA
 Los Angeles, CA
 Plymouth, IN
 Salem, OR
 Dallas, TX

PART NO.	RDS-SQNP	PAGE 1 OF 2
DWG. NO.	RDS-SQNP	



2-3/8" TO 2-7/8" O.D.
ANTENNA PIPE
(ORDER SEPARATELY)



TOLERANCE NOTES

**TOLERANCES ON DIMENSIONS, UNLESS OTHERWISE NOTED ARE:
SAWED, SHEARED AND GAS CUT EDGES ($\pm 0.030"$)
DRILLED AND GAS CUT HOLES ($\pm 0.030"$) - NO CONING OF HOLES
LASER CUT EDGES AND HOLES ($\pm 0.010"$) - NO CONING OF HOLES
BENDS ARE $\pm 1/2$ DEGREE
ALL OTHER MACHINING ($\pm 0.030"$)
ALL OTHER ASSEMBLY ($\pm 0.060"$)**

**PROPRIETARY NOTE:
THE DATA AND TECHNIQUES CONTAINED IN THIS DRAWING ARE PROPRIETARY INFORMATION OF VALMONT
INDUSTRIES AND CONSIDERED A TRADE SECRET. ANY USE OR DISCLOSURE WITHOUT THE CONSENT OF
VALMONT INDUSTRIES IS STRICTLY PROHIBITED.**

DESCRIPTION
**MONOPOLE
DOUBLE SUPPORT
ARM KIT**

CPD NO.	DRAWN BY CEK 4/28/2017	ENG. APPROVAL
CLASS 81	SUB 01	DRAWING USAGE CUSTOMER
	CHECKED BY BMC 5/12/2017	

SITE PRO 1
A valmont COMPANY

Engineering Support Team:
1-888-753-7446

Locations:
New York, NY
Atlanta, GA
Los Angeles, CA
Plymouth, IN
Salem, OR
Dallas, TX

PART NO.	RDS-SQNP	PAGE 2 OF 2
DWG. NO.	RDS-SQNP	