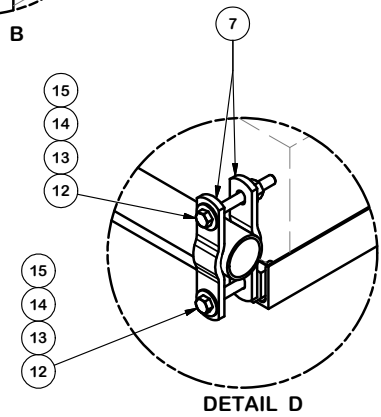
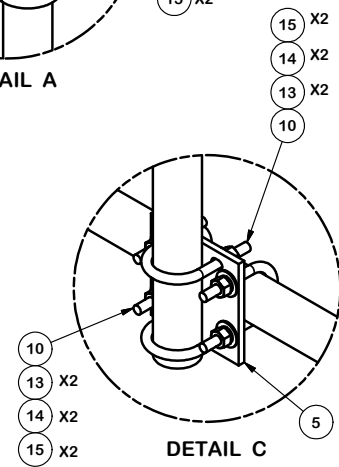
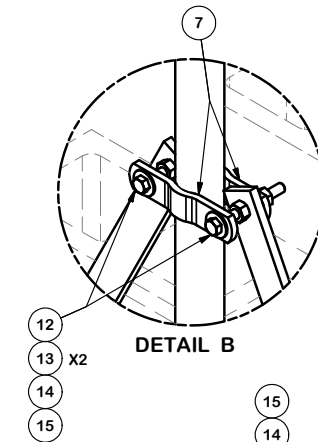
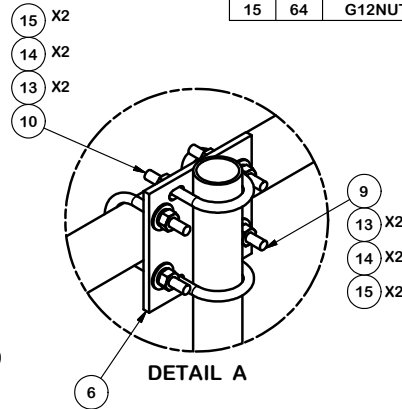


PARTS LIST						
ITEM	QTY	PART NO.	PART DESCRIPTION	LENGTH	UNIT WT.	NET WT.
1	2	X-251012	BALLAST TRAY WELDMENT - SITE PRO 1		36.46	72.92
2	1	P3084	2 1/2" SCH. 40 PIPE (2.875" O.D. x 0.203" WALL) A500	84 in	40.65	40.65
3	4	P263	2-3/8" X 63" SCH 40 GALVANIZED PIPE	63 in	20.18	80.74
4	4	X-232698	TRPD-HD SUPPORT PLATE - SITE PRO 1		8.72	34.89
5	2	SCX1	CROSSOVER PLATE 2-3/8" X 2-3/8"		3.71	7.42
6	3	SCX2	CROSSOVER PLATE	7 in	4.80	14.39
7	20	X-115765	5" V-CLAMP		1.03	20.51
8	4	X-124312	1/2" X 2" X 2" ANGLE SPACER; WITH 9/16" HOLE		0.53	2.13
9	6	X-UB1300	1/2" X 3" X 5" X 2" U-BOLT (HDG.)		0.26	1.54
10	14	X-UB1212	1/2" X 2-1/2" X 4-1/2" X 2" U-BOLT (HDG.)		0.26	3.60
11	4	G1205	1/2" x 5" HDG HEX BOLT GR5 FULL THREAD	5 in	0.33	1.30
12	16	G12045	1/2" x 4.5" HDG HEX BOLT GR5 FULL THREAD	4 1/2 in	0.30	4.77
13	68	G12FW	1/2" HDG USS FLATWASHER		0.03	2.32
14	60	G12LW	1/2" HDG LOCKWASHER		0.01	0.83
15	64	G12NUT	1/2" HDG HEAVY 2H HEX NUT		0.07	4.58
					TOTAL WT. #	300.37



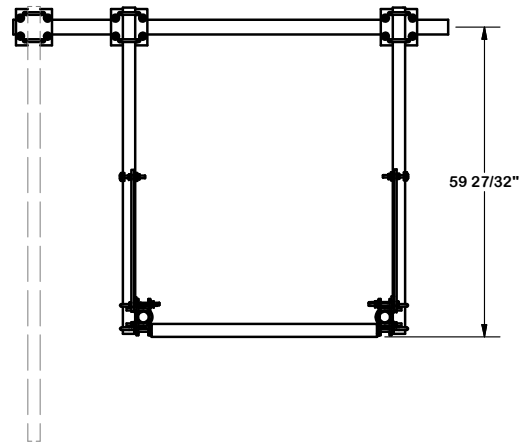
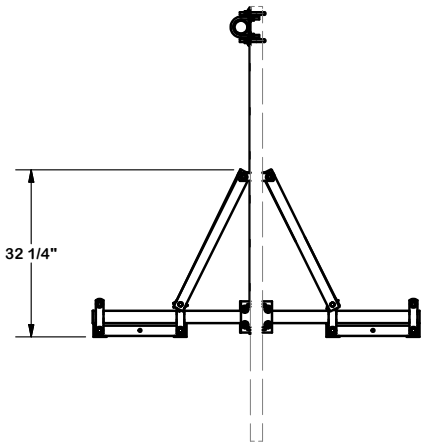
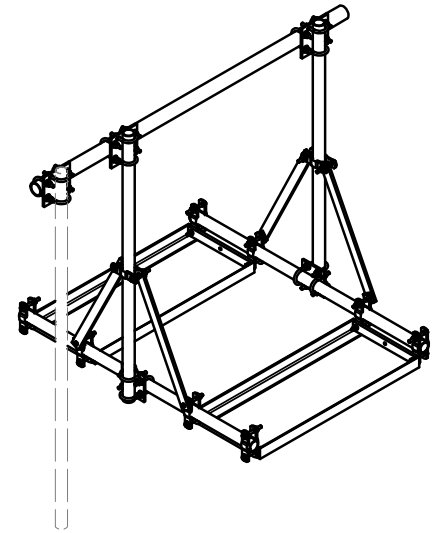
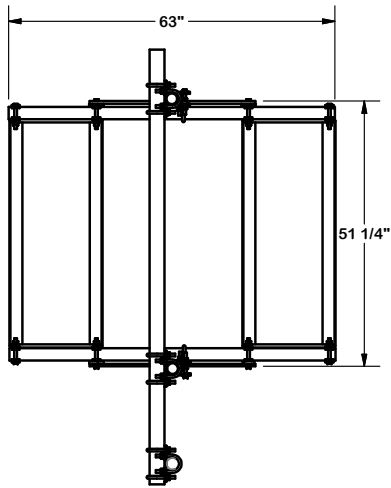
**TOLERANCE NOTES**

TOLERANCES ON DIMENSIONS, UNLESS OTHERWISE NOTED ARE:  
 SAWED, SHEARED AND GAS CUT EDGES ( $\pm 0.030"$ )  
 DRILLED AND GAS CUT HOLES ( $\pm 0.030"$ ) - NO CONING OF HOLES  
 LASER CUT EDGES AND HOLES ( $\pm 0.010"$ ) - NO CONING OF HOLES  
 BENDS ARE  $\pm 1/2$  DEGREE  
 ALL OTHER MACHINING ( $\pm 0.030"$ )  
 ALL OTHER ASSEMBLY ( $\pm 0.060"$ )

PROPRIETARY NOTE:  
 THE DATA AND TECHNIQUES CONTAINED IN THIS DRAWING ARE PROPRIETARY INFORMATION OF VALMONT INDUSTRIES AND CONSIDERED A TRADE SECRET. ANY USE OR DISCLOSURE WITHOUT THE CONSENT OF VALMONT INDUSTRIES IS STRICTLY PROHIBITED.

DESCRIPTION	
ROOFTOP PARAPET OVERHANG SMALL TRAY	
CPD NO.	DRAWN BY
	CEK 1/12/2015
CLASS	ENG. APPROVAL
81	BMC 1/15/2015
SUB	CHECKED BY
02	CUSTOMER
	DRAWING USAGE
	CUSTOMER

<p>Engineering Support Team: 1-888-753-7446</p> <p>A valmont COMPANY</p>	Locations: New York, NY Atlanta, GA Los Angeles, CA Plymouth, IN Salem, OR Dallas, TX
	<p>PART NO. RPO-S</p> <p>DWG. NO. RPO-S</p>



**TOLERANCE NOTES**

TOLERANCES ON DIMENSIONS, UNLESS OTHERWISE NOTED ARE:  
 SAWED, SHEARED AND GAS CUT EDGES ( $\pm 0.030"$ )  
 DRILLED AND GAS CUT HOLES ( $\pm 0.030"$ ) - NO CONING OF HOLES  
 LASER CUT EDGES AND HOLES ( $\pm 0.010"$ ) - NO CONING OF HOLES  
 BENDS ARE  $\pm 1/2$  DEGREE  
 ALL OTHER MACHINING ( $\pm 0.030"$ )  
 ALL OTHER ASSEMBLY ( $\pm 0.060"$ )

PROPRIETARY NOTE:  
 THE DATA AND TECHNIQUES CONTAINED IN THIS DRAWING ARE PROPRIETARY INFORMATION OF VALMONT INDUSTRIES AND CONSIDERED A TRADE SECRET. ANY USE OR DISCLOSURE WITHOUT THE CONSENT OF VALMONT INDUSTRIES IS STRICTLY PROHIBITED.

DESCRIPTION  
**ROOFTOP PARAPET  
 OVERHANG SMALL TRAY**

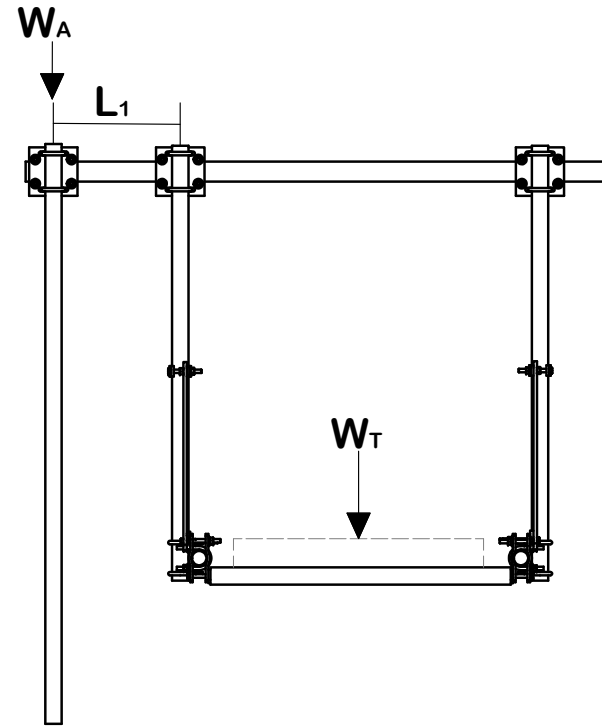
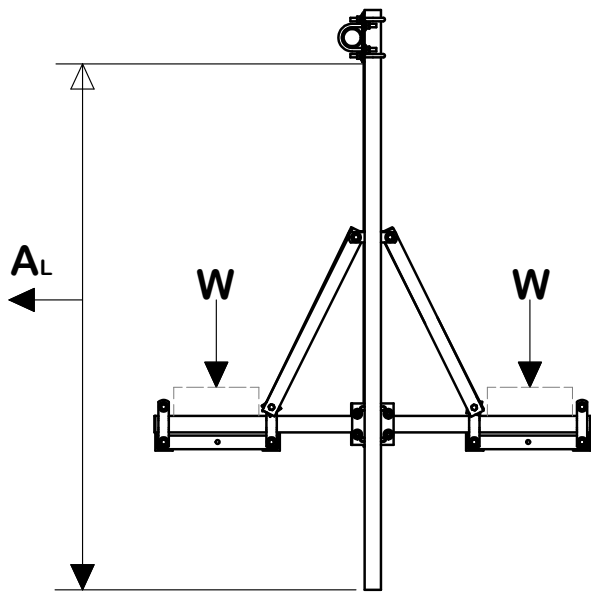
CPD NO.	DRAWN BY	ENG. APPROVAL
CLASS	SUB	DRAWING USAGE
81	02	CUSTOMER
		CHECKED BY
		BMC 1/15/2015

**SITE PRO 1**  
 A valmont COMPANY

Engineering Support Team:  
 1-888-753-7446

Locations:  
 New York, NY  
 Atlanta, GA  
 Los Angeles, CA  
 Plymouth, IN  
 Salem, OR  
 Dallas, TX

PART NO.	RPO-S	PAGE
DWG. NO.	RPO-S	2 OF 3



$$W = \frac{AL(11.4) + AL(L_1) - W_A(L_1)}{1.875}$$

$$W_T = W * 2$$

- AL = ANTENNA LOAD
- WA = ANTENNA WEIGHT
- L1 = STANDOFF DISTANCE
- W = WEIGHT PER TRAY
- WT = WEIGHT TOTAL

**TOLERANCE NOTES**

TOLERANCES ON DIMENSIONS, UNLESS OTHERWISE NOTED ARE:  
 SAWED, SHEARED AND GAS CUT EDGES ( $\pm 0.030"$ )  
 DRILLED AND GAS CUT HOLES ( $\pm 0.030"$ ) - NO CONING OF HOLES  
 LASER CUT EDGES AND HOLES ( $\pm 0.010"$ ) - NO CONING OF HOLES  
 BENDS ARE  $\pm 1/2$  DEGREE  
 ALL OTHER MACHINING ( $\pm 0.030"$ )  
 ALL OTHER ASSEMBLY ( $\pm 0.060"$ )

PROPRIETARY NOTE:  
 THE DATA AND TECHNIQUES CONTAINED IN THIS DRAWING ARE PROPRIETARY INFORMATION OF VALMONT INDUSTRIES AND CONSIDERED A TRADE SECRET. ANY USE OR DISCLOSURE WITHOUT THE CONSENT OF VALMONT INDUSTRIES IS STRICTLY PROHIBITED.

DESCRIPTION  
**ROOFTOP PARAPET  
 OVERHANG SMALL TRAY**

**SITE PRO 1**  
 Engineering Support Team:  
 1-888-753-7446  
 Locations:  
 New York, NY  
 Atlanta, GA  
 Los Angeles, CA  
 Plymouth, IN  
 Salem, OR  
 Dallas, TX

CPD NO.	DRAWN BY CEK 1/12/2015	ENG. APPROVAL
CLASS 81	SUB 02	DRAWING USAGE CUSTOMER
	CHECKED BY BMC 1/15/2015	

PART NO. <b>RPO-S</b>	PAGE 3 OF 3
DWG. NO. <b>RPO-S</b>	