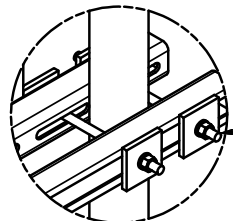
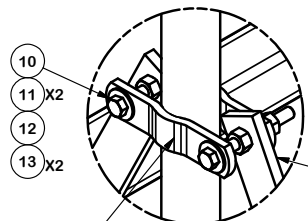


PARTS LIST						
ITEM	QTY	PART NO.	PART DESCRIPTION	LENGTH	UNIT WT.	NET WT.
1	2	X-251012	BALLAST TRAY WELDMENT - SITE PRO 1		36.46	72.92
2	4	P263	2-3/8" X 63" SCH 40 GALVANIZED PIPE	63 in	20.18	80.74
3	4	X-232698	TRPD-HD SUPPORT PLATE - SITE PRO 1		8.72	34.89
4	2	SCX1	CROSSOVER PLATE 2-3/8" X 2-3/8"		3.71	7.42
5	20	X-115765	5" V-CLAMP		1.03	20.51
6	4	UNT5	UNISTRUT		10.19	40.76
7	4	X-124312	1/2" X 2" X 2" ANGLE SPACER; WITH 9/16" HOLE		0.53	2.13
8	8	X-UB1212	1/2" X 2-1/2" X 4-1/2" X 2" U-BOLT (HDG.)		0.73	5.85
9	4	G1205	1/2" x 5" HDG HEX BOLT GR5 FULL THREAD	5 in	0.33	1.30
10	16	G12045	1/2" x 4.5" HDG HEX BOLT GR5 FULL THREAD	4 1/2 in	0.30	4.77
11	44	G12FW	1/2" HDG USS FLATWASHER		0.03	1.50
12	36	G12LW	1/2" HDG LOCKWASHER		0.01	0.50
13	40	G12NUT	1/2" HDG HEAVY 2H HEX NUT		0.07	2.87
14	8	SS38R-8	3/8" X 8" THREADED ROD (STAINLESS STEEL)		0.25	2.01
15	16	SQW38	3/8" SQUARE WASHER (GALV.)	2 in	0.27	4.37
16	16	SS38LW	3/8" SS LOCKWASHER		0.01	0.11
17	16	SS38NUT	3/8" SS HEX NUT		0.02	0.29
TOTAL WT. #						282.07



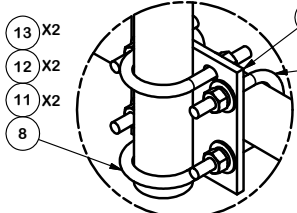
DETAIL A

- 14
- 15 X2
- 16 X2
- 17 X2



DETAIL B

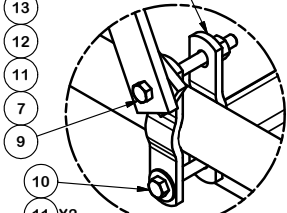
- 10
- 11 X2
- 12
- 13 X2



DETAIL C

- 13 X2
- 12 X2
- 11 X2
- 8

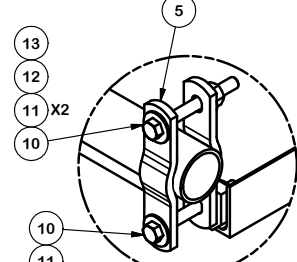
- 4
- 8
- 11 X2
- 12 X2
- 13 X2



DETAIL D

- 13
- 12
- 11
- 7
- 9

- 10
- 11 X2
- 12
- 13



DETAIL E

- 13
- 12
- 11 X2
- 10

- 10
- 11
- 12
- 13

TOLERANCE NOTES

TOLERANCES ON DIMENSIONS, UNLESS OTHERWISE NOTED ARE:
 SAWED, SHEARED AND GAS CUT EDGES ($\pm 0.030"$)
 DRILLED AND GAS CUT HOLES ($\pm 0.030"$) - NO CONING OF HOLES
 LASER CUT EDGES AND HOLES ($\pm 0.010"$) - NO CONING OF HOLES
 BENDS ARE $\pm 1/2$ DEGREE
 ALL OTHER MACHINING ($\pm 0.030"$)
 ALL OTHER ASSEMBLY ($\pm 0.060"$)

PROPRIETARY NOTE:
 THE DATA AND TECHNIQUES CONTAINED IN THIS DRAWING ARE PROPRIETARY INFORMATION OF VALMONT INDUSTRIES AND CONSIDERED A TRADE SECRET. ANY USE OR DISCLOSURE WITHOUT THE CONSENT OF VALMONT INDUSTRIES IS STRICTLY PROHIBITED.

DESCRIPTION
5' HEAVY DUTY ROOFTOP FOR REMOTE RADIO UNITS

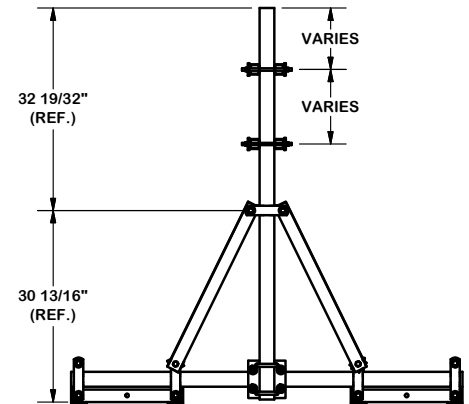
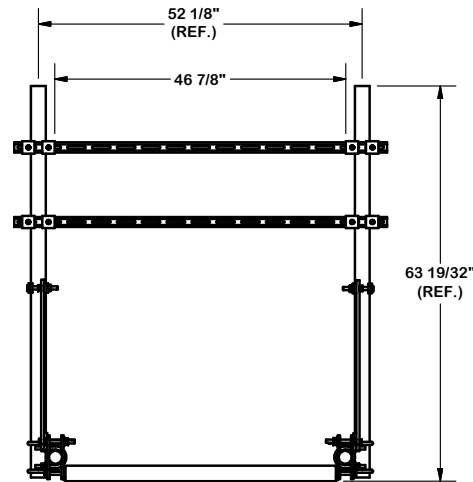
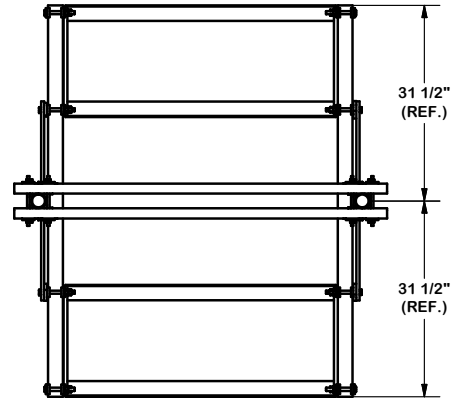
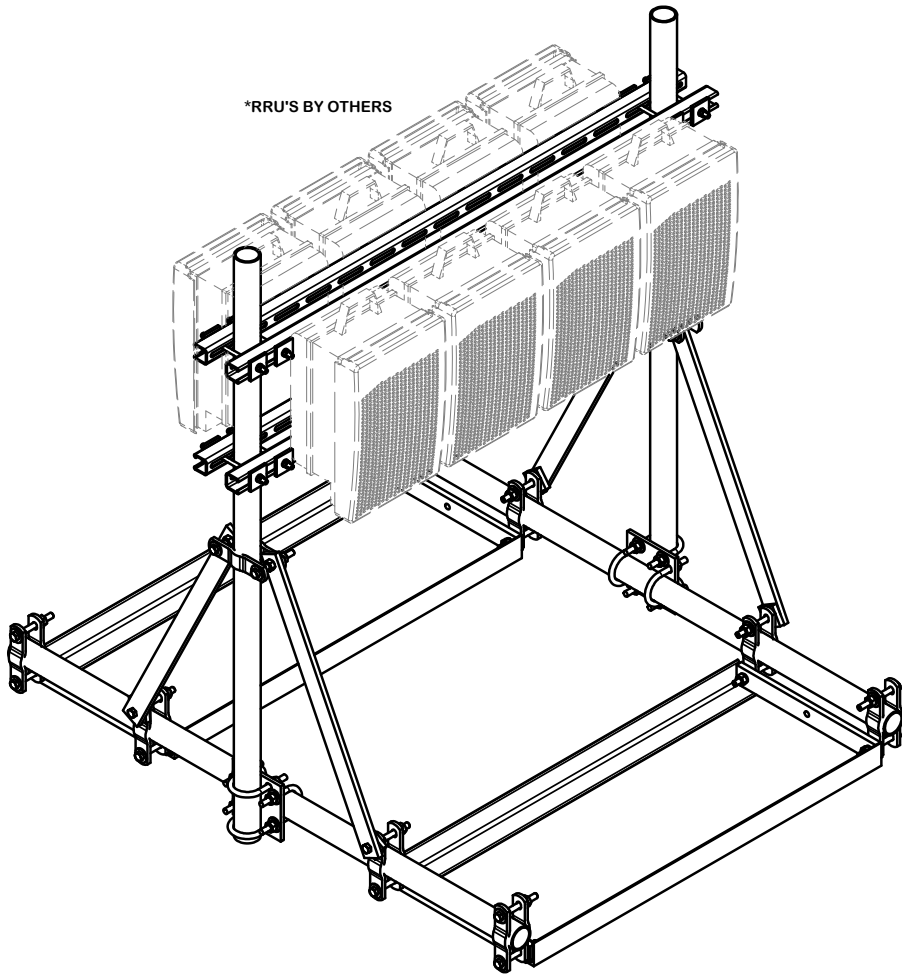
CPD NO.	DRAWN BY	ENG. APPROVAL
	CEK 3/16/2015	
CLASS	DRAWING USAGE	CHECKED BY
81	CUSTOMER	BMC 3/16/2015

A valmont COMPANY

Locations:
 New York, NY
 Atlanta, GA
 Los Angeles, CA
 Plymouth, IN
 Salem, OR
 Dallas, TX

Engineering Support Team:
 1-888-753-7446

PART NO.	RT-RRU5HD	PAGE
DWG. NO.	RT-RRU5HD	1 OF 3



TOLERANCE NOTES

TOLERANCES ON DIMENSIONS, UNLESS OTHERWISE NOTED ARE:
 SAWED, SHEARED AND GAS CUT EDGES (± 0.030 "")
 DRILLED AND GAS CUT HOLES (± 0.030 "") - NO CONING OF HOLES
 LASER CUT EDGES AND HOLES (± 0.010 "") - NO CONING OF HOLES
 BENDS ARE $\pm 1/2$ DEGREE
 ALL OTHER MACHINING (± 0.030 "")
 ALL OTHER ASSEMBLY (± 0.060 "")

PROPRIETARY NOTE:
 THE DATA AND TECHNIQUES CONTAINED IN THIS DRAWING ARE PROPRIETARY INFORMATION OF VALMONT INDUSTRIES AND CONSIDERED A TRADE SECRET. ANY USE OR DISCLOSURE WITHOUT THE CONSENT OF VALMONT INDUSTRIES IS STRICTLY PROHIBITED.

DESCRIPTION

5' HEAVY DUTY ROOFTOP
 FOR REMOTE RADIO UNITS

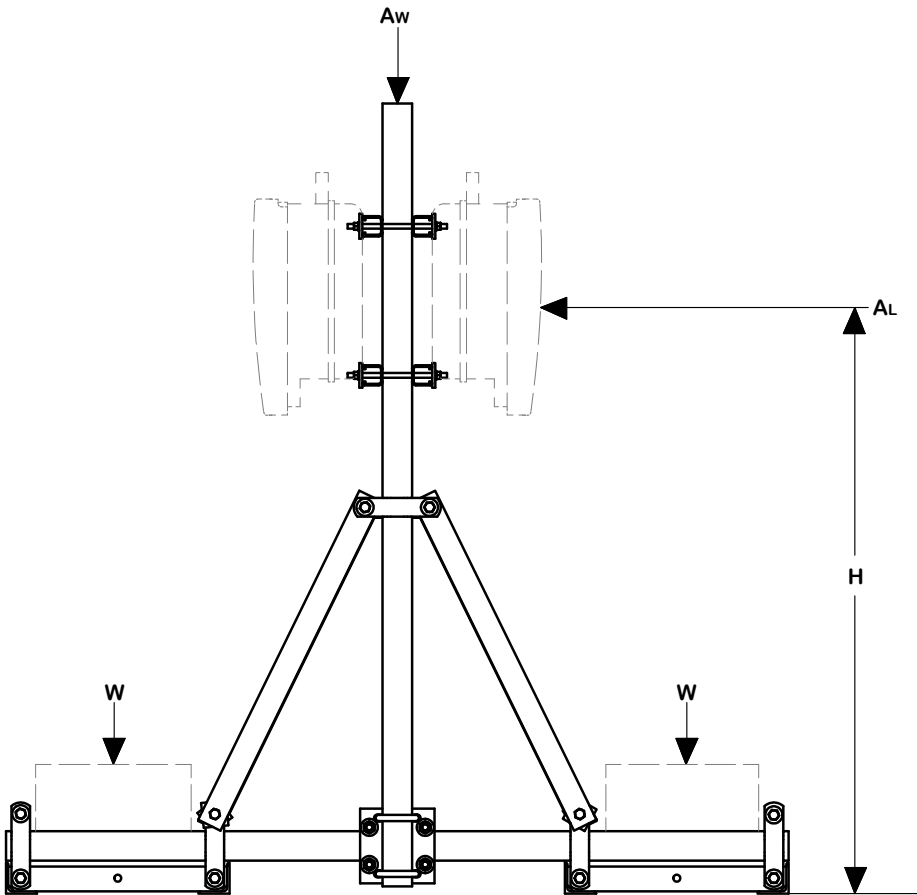
CPD NO.	DRAWN BY	ENG. APPROVAL
CLASS	DRAWING USAGE	CHECKED BY
81	02	CUSTOMER
		BMC 3/16/2015



Engineering
 Support Team:
 1-888-753-7446

Locations:
 New York, NY
 Atlanta, GA
 Los Angeles, CA
 Plymouth, IN
 Salem, OR
 Dallas, TX

PART NO.	RT-RRU5HD
DWG. NO.	RT-RRU5HD



BALLAST EQUATION WITH 1.5 SAFETY FACTOR:

$$W = \frac{(A_L * H * 1.5) - (A_w * 2.625)}{4.5}$$

$$W_T = W * 2$$

BALLAST EQUATION WITH REV. G LOADING:

$$W = \frac{(A_L * H * 1.6) - (A_w * 2.625)}{4.5 (0.9)}$$

$$W_T = W * 2$$

- A_L = TOTAL ANTENNA / EQUIPMENT WIND LOAD (NON-FACTORED) lbs
- A_w = TOTAL ANTENNA / EQUIPMENT WEIGHT (NON-FACTORED) lbs
- H = HEIGHT FROM ROOFTOP ft
- W_T = TOTAL BALLAST WEIGHT lbs
- W = BALLAST WEIGHT PER TRAY lbs

TOLERANCE NOTES

**TOLERANCES ON DIMENSIONS, UNLESS OTHERWISE NOTED ARE:
 SAWED, SHEARED AND GAS CUT EDGES (± 0.030")
 DRILLED AND GAS CUT HOLES (± 0.030") - NO CONING OF HOLES
 LASER CUT EDGES AND HOLES (± 0.010") - NO CONING OF HOLES
 BENDS ARE ± 1/2 DEGREE
 ALL OTHER MACHINING (± 0.030")
 ALL OTHER ASSEMBLY (± 0.060")**

PROPRIETARY NOTE:
 THE DATA AND TECHNIQUES CONTAINED IN THIS DRAWING ARE PROPRIETARY INFORMATION OF VALMONT INDUSTRIES AND CONSIDERED A TRADE SECRET. ANY USE OR DISCLOSURE WITHOUT THE CONSENT OF VALMONT INDUSTRIES IS STRICTLY PROHIBITED.

DESCRIPTION
**5' HEAVY DUTY ROOFTOP
 FOR REMOTE RADIO UNITS**



Locations:
 New York, NY
 Atlanta, GA
 Los Angeles, CA
 Plymouth, IN
 Salem, OR
 Dallas, TX
 Engineering Support Team:
 1-888-753-7446

CPD NO.	DRAWN BY CEK 3/16/2015	ENG. APPROVAL
CLASS 81	SUB 02	DRAWING USAGE CUSTOMER
CHECKED BY BMC 3/16/2015		

PART NO. RT-RRU5HD	PAGE 3 OF 3
DWG. NO. RT-RRU5HD	