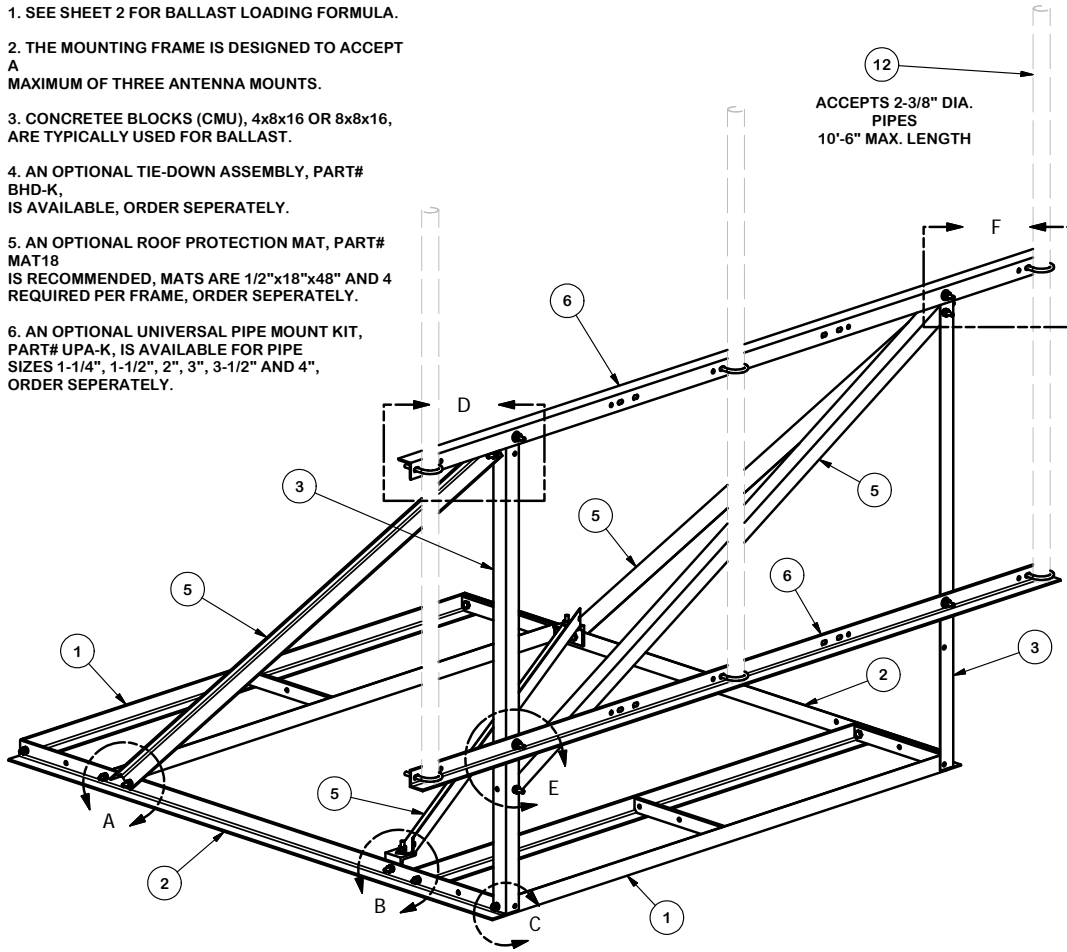
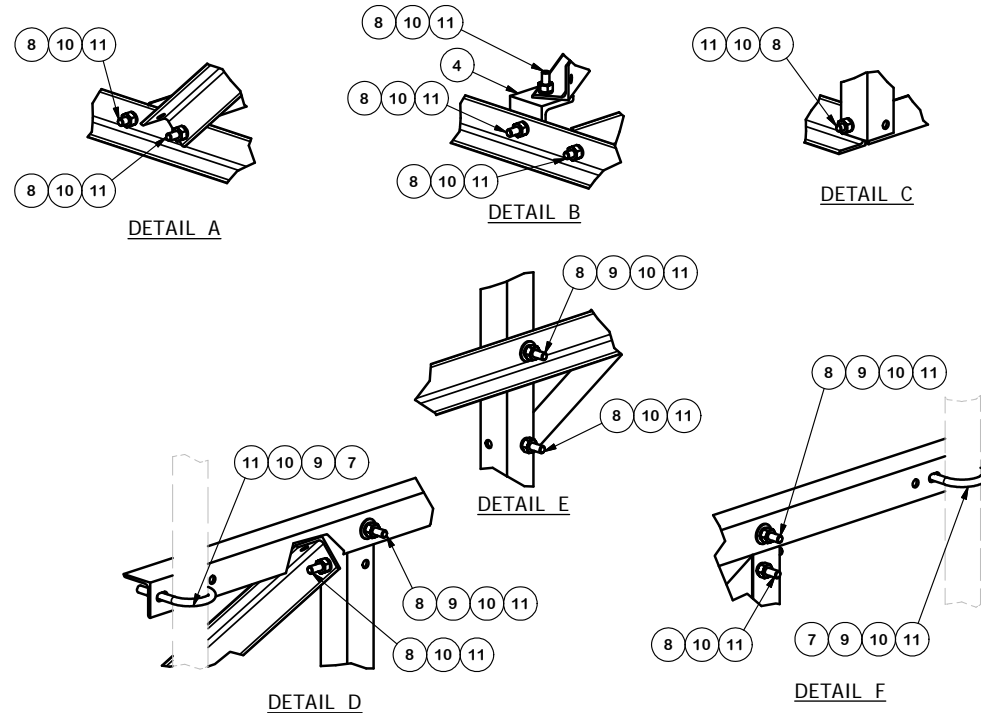


NOTES:

- SEE SHEET 2 FOR BALLAST LOADING FORMULA.
- THE MOUNTING FRAME IS DESIGNED TO ACCEPT A MAXIMUM OF THREE ANTENNA MOUNTS.
- CONCRETE BLOCKS (CMU), 4x8x16 OR 8x8x16, ARE TYPICALLY USED FOR BALLAST.
- AN OPTIONAL TIE-DOWN ASSEMBLY, PART# BHD-K, IS AVAILABLE, ORDER SEPERATELY.
- AN OPTIONAL ROOF PROTECTION MAT, PART# MAT18 IS RECOMMENDED, MATS ARE 1/2"x18"x48" AND 4 REQUIRED PER FRAME, ORDER SEPERATELY.
- AN OPTIONAL UNIVERSAL PIPE MOUNT KIT, PART# UPA-K, IS AVAILABLE FOR PIPE SIZES 1-1/4", 1-1/2", 2", 3", 3-1/2" AND 4", ORDER SEPERATELY.



PARTS LIST						
ITEM	QTY	PART NO.	PART DESCRIPTION	LENGTH	UNIT WT.	NET WT.
1	2	X-232696	BALLAST TRAY WELDMENT - SITE PRO 1		66.53	133.06
2	2	X-232699	SIDE BASE ANGLE 95" LENGTH - SITE PRO 1		25.76	51.52
3	2	X-232700	VERTICAL ANGLE 70-9/16" LENGTH - SITE PRO 1		19.08	38.15
4	2	SHCM-T	CHAIN MOUNT TIGHTENER BRACKET		1.84	3.68
5	4	X-232702	SUPPORT ANGLE 99-1/8" LENGTH - SITE PRO 1		26.94	107.75
6	2	X-233156	HORIZONTAL FACE ANGLE 125-1/4" LENGTH - SITE PRO 1		33.71	67.41
7	6	X-UB1212	1/2" X 2-1/2" X 4-1/2" X 2" GALV. U-BOLT		0.66	3.94
8	21	G1202	1/2" X 2" HDG HEX BOLT GR5		0.18	3.69
9	16	G12FW	1/2" HDG USS FLATWASHER		0.03	0.54
10	33	G12LW	1/2" HDG LOCKWASHER		0.01	0.46
11	33	G12NUT	1/2" HDG HEAVY 2H HEX NUT		0.07	2.36
12	B	C	2-3/8" VERTICAL MOUNTING PIPE	D	E	F



TABLE

ASSEMBLY "A"	QTY "B"	PART "C"	LENGTH "D"	UNIT WT. "E"	NET WT. "F"	TOTAL WEIGHT
RTW-10	0	---	---	---	---	412.21
RTW-10-3-96	3	P296	96"	30.76	92.28	504.49
RTW-10-3-126	3	P2126	126"	41.37	124.11	536.32

TOLERANCE NOTES

TOLERANCES ON DIMENSIONS, UNLESS OTHERWISE NOTED ARE:  
 SAWED, SHEARED AND GAS CUT EDGES ( $\pm 0.030"$ )  
 DRILLED AND GAS CUT HOLES ( $\pm 0.030"$ ) - NO CONING OF HOLES  
 LASER CUT EDGES AND HOLES ( $\pm 0.010"$ ) - NO CONING OF HOLES  
 BENDS ARE  $\pm 1/2$  DEGREE  
 ALL OTHER MACHINING ( $\pm 0.030"$ )  
 ALL OTHER ASSEMBLY ( $\pm 0.060"$ )

PROPRIETARY NOTE:  
 THE DATA AND TECHNIQUES CONTAINED IN THIS DRAWING ARE PROPRIETARY INFORMATION OF VALMONT INDUSTRIES AND CONSIDERED A TRADE SECRET. ANY USE OR DISCLOSURE WITHOUT THE CONSENT OF VALMONT INDUSTRIES IS STRICTLY PROHIBITED.

DESCRIPTION  
 10' NON-PENETRATING  
 ROOF MOUNT  
 SITE PRO 1

**SITE PRO 1**  
 Engineering Support Team:  
 1-888-753-7446

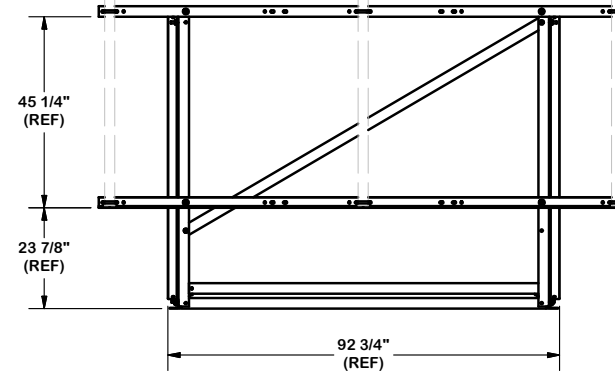
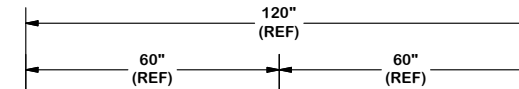
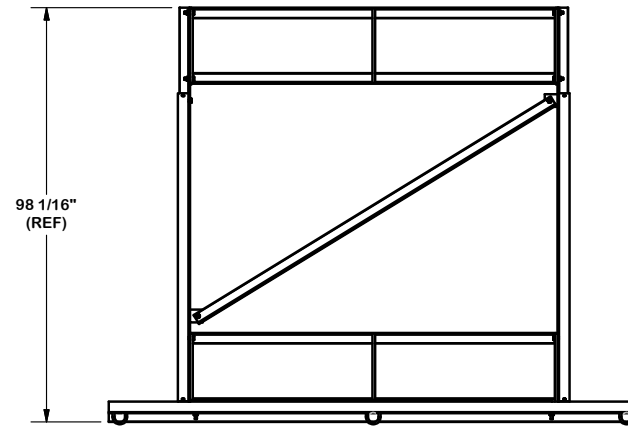
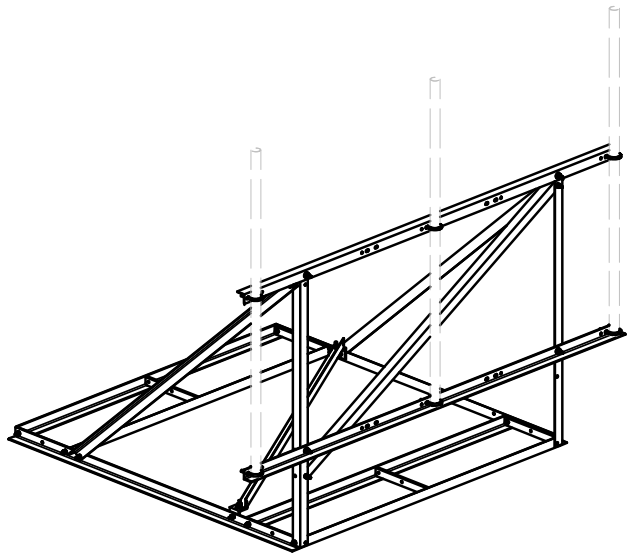
Locations:  
 New York, NY  
 Atlanta, GA  
 Los Angeles, CA  
 Plymouth, IN  
 Salem, OR  
 Dallas, TX

A valmont COMPANY

REV	DESCRIPTION OF REVISIONS	CPD	BY	DATE
B	ADDED VARIABLE TABLE		KC8	06/06/2012
A	UPDATE BALLAST EQUATION	4893	BMC	5/17/2011

CPD NO.	DRAWN BY	ENG. APPROVAL
4893	RH18 12/14/2010	
CLASS	SUB	DRAWING USAGE
81	01	CUSTOMER
CHECKED BY	DATE	
CEK	7/10/2012	

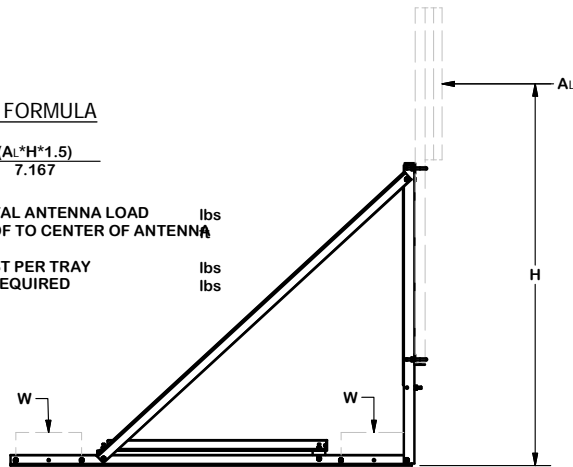
PART NO.	DWG. NO.
SEE ASSEMBLY "A"	RTW-10



**BALLAST FORMULA**

$$W = \frac{(AL \cdot H \cdot 1.5)}{7.167}$$

- AL = TOTAL HORIZONTAL ANTENNA LOAD lbs
- H = HEIGHT FROM ROOF TO CENTER OF ANTENNA lbs
- W = REQUIRED BALLAST PER TRAY lbs
- W (2) = TOTAL BALLAST REQUIRED lbs



**TOLERANCE NOTES**

TOLERANCES ON DIMENSIONS, UNLESS OTHERWISE NOTED ARE:  
 SAWED, SHEARED AND GAS CUT EDGES ( $\pm 0.030"$ )  
 DRILLED AND GAS CUT HOLES ( $\pm 0.030"$ ) - NO CONING OF HOLES  
 LASER CUT EDGES AND HOLES ( $\pm 0.010"$ ) - NO CONING OF HOLES  
 BENDS ARE  $\pm 1/2$  DEGREE  
 ALL OTHER MACHINING ( $\pm 0.030"$ )  
 ALL OTHER ASSEMBLY ( $\pm 0.060"$ )

PROPRIETARY NOTE:  
 THE DATA AND TECHNIQUES CONTAINED IN THIS DRAWING ARE PROPRIETARY INFORMATION OF VALMONT INDUSTRIES AND CONSIDERED A TRADE SECRET. ANY USE OR DISCLOSURE WITHOUT THE CONSENT OF VALMONT INDUSTRIES IS STRICTLY PROHIBITED.

DESCRIPTION  
 10' NON-PENETRATING  
 ROOF MOUNT  
 SITE PRO 1

**SITE PRO 1**  
 Engineering Support Team: 1-888-753-7446  
 Locations:  
 New York, NY  
 Atlanta, GA  
 Los Angeles, CA  
 Plymouth, IN  
 Salem, OR  
 Dallas, TX

REV	DESCRIPTION OF REVISIONS	CPD	BY	DATE
B	ADDED VARIABLE TABLE		KC8	06/06/2012
A	UPDATE BALLAST EQUATION	4893	BMC	5/17/2011

CPD NO. 4893	DRAWN BY RH18 12/14/2010	ENG. APPROVAL
CLASS 81	SUB 01	DRAWING USAGE CUSTOMER
CHECKED BY CEK 7/10/2012		

PART NO. <b>SEE ASSEMBLY "A"</b>	PAGE 2 OF 2
DWG. NO. RTW-10	