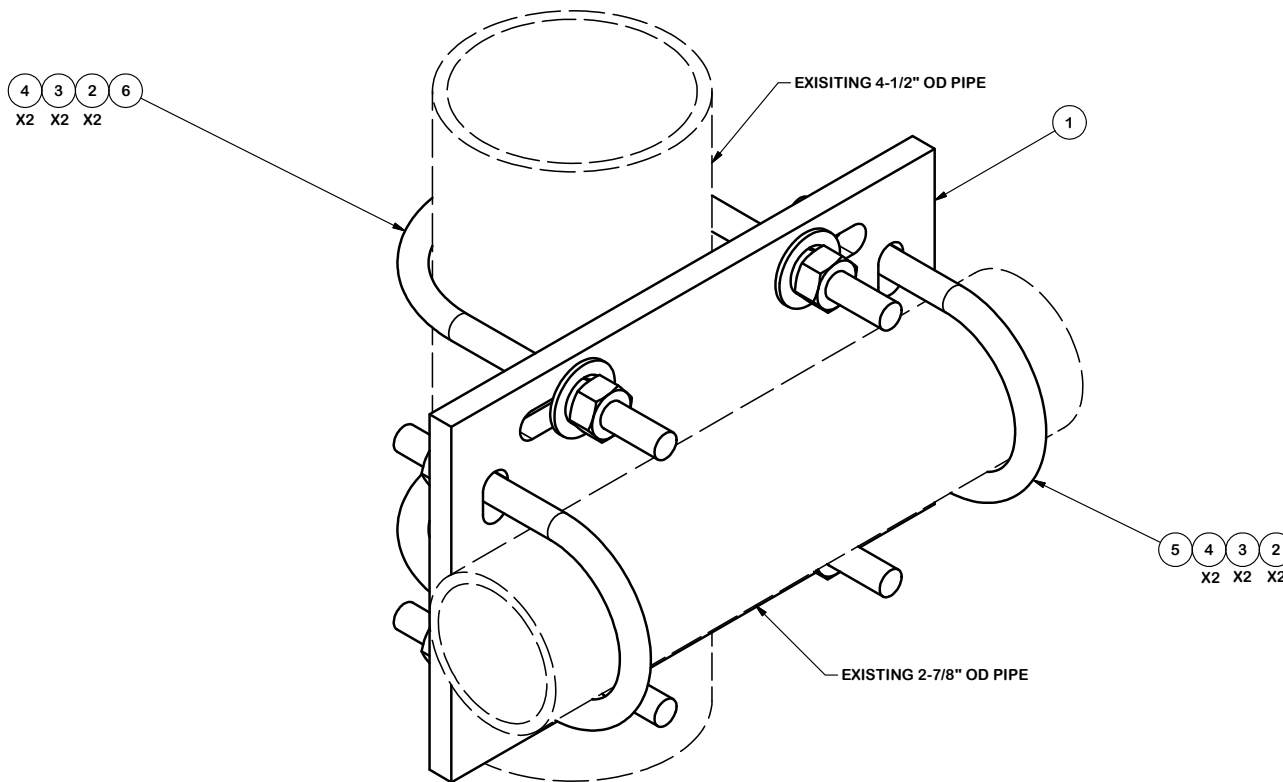


PARTS LIST						
ITEM	QTY	PART NO.	PART DESCRIPTION	LENGTH	UNIT WT.	NET WT.
1	1	SCX6	CROSSOVER PLATE	11 in	10.62	10.62
2	8	G12FW	1/2" HDG USS FLATWASHER		0.03	0.27
3	8	G12LW	1/2" HDG LOCKWASHER		0.01	0.11
4	8	G12NUT	1/2" HDG HEAVY 2H HEX NUT		0.07	0.57
5	2	X-UB1300	1/2" X 3" X 5" X 2" U-BOLT (HDG.)		0.89	1.77
6	2	X-UB1458	1/2" X 4-5/8" X 7" X 3" U-BOLT (HDG.)		0.89	1.77
					TOTAL WT. #	14.39



TOLERANCE NOTES

TOLERANCES ON DIMENSIONS, UNLESS OTHERWISE NOTED ARE:
 SAWED, SHEARED AND GAS CUT EDGES ($\pm 0.030"$)
 DRILLED AND GAS CUT HOLES ($\pm 0.030"$) - NO CONING OF HOLES
 LASER CUT EDGES AND HOLES ($\pm 0.010"$) - NO CONING OF HOLES
 BENDS ARE $\pm 1/2$ DEGREE
 ALL OTHER MACHINING ($\pm 0.030"$)
 ALL OTHER ASSEMBLY ($\pm 0.060"$)

PROPRIETARY NOTE:
 THE DATA AND TECHNIQUES CONTAINED IN THIS DRAWING ARE PROPRIETARY INFORMATION OF VALMONT INDUSTRIES AND CONSIDERED A TRADE SECRET. ANY USE OR DISCLOSURE WITHOUT THE CONSENT OF VALMONT INDUSTRIES IS STRICTLY PROHIBITED.

DESCRIPTION
 CROSSOVER PLATE KIT
 2-7/8" O.D. TO 4-1/2" O.D.

CPD NO.	DRAWN BY	ENG. APPROVAL
81	KC8 7/30/2012	BMC 7/30/2012
CLASS	SUB	DRAWING USAGE
81	01	CUSTOMER

SITE PRO 1
 A valmont COMPANY

Engineering Support Team:
 1-888-753-7446

Locations:
 New York, NY
 Atlanta, GA
 Los Angeles, CA
 Plymouth, IN
 Salem, OR
 Dallas, TX

PART NO.	SCX6-K	PAGE
DWG. NO.	SCX6-K	1 OF 1