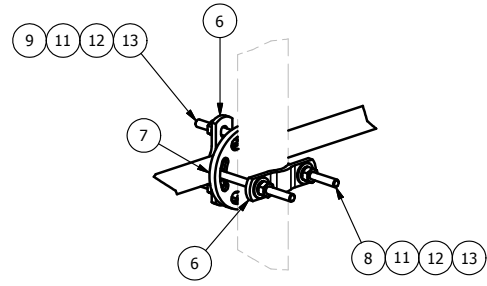
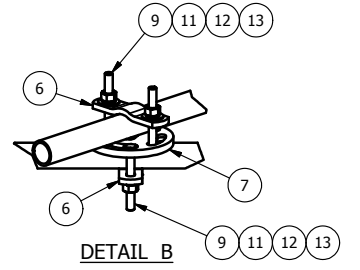


2-3/8" O.D. ANTENNA MOUNTING PIPE MUST BE CENTERED VERTICALLY ON THE FACE. PIPES MUST BE EQUALLY DISTRIBUTED ACROSS THE FACE. (SEE PAGE 2). ORDERED SEPERATELY.

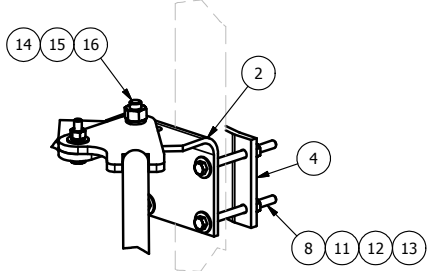
| PARTS LIST |     |          |   |        |             |         |
|------------|-----|----------|---|--------|-------------|---------|
| ITEM       | QTY | PART NO. | PART DESCRIPTION                              | LENGTH | UNIT WT.    | NET WT. |
| 1          | 1   | X-197771 | BC-FRAME FOLDING ASSEMBLY KIT                 |        | 192.67      | 192.67  |
| 2          | 1   | X-192043 | UPPER MOUNTING BRACKET FOR V-FRAME            |        | 8.31        | 8.31    |
| 3          | 1   | X-192044 | LOWER MOUNTING BRACKET FOR V-FRAME            |        | 8.31        | 8.31    |
| 4          | 2   | X-159999 | BACKING PLATE FOR R5 UNIVERSAL PIPE MOUNT     |        | 5.46        | 10.92   |
| 5          | 8   | SCX1     | CROSSOVER PLATE 2-3/8" X 2-3/8"               |        | 1.85        | 14.83   |
| 6          | 6   | X-100064 | CLAMP (S) (4" V-CLAMP) GALVANIZED             |        | 0.91        | 5.48    |
| 7          | 2   | X-127594 | FLAT DISK CLAMP PLATE 4" CENTERS (GALVANIZED) |        | 2.48        | 4.97    |
| 8          | 10  | G12065   | 1/2" x 6.5" HDG HEX BOLT GR5 FULL THREAD      |        | 0.41        | 4.09    |
| 9          | 14  | G1204    | 1/2" x 4" HDG HEX BOLT GR5 FULL THREAD        |        | 0.27        | 3.78    |
| 10         | 32  | X-UB1212 | 1/2" X 2-1/2" X 4-1/2" X 2" GALV. U-BOLT      |        | 0.63        | 20.00   |
| 11         | 84  | G12FW    | 1/2" HDG USS FLATWASHER                       |        | 0.03        | 2.86    |
| 12         | 88  | G12LW    | 1/2" HDG LOCKWASHER                           |        | 0.01        | 1.22    |
| 13         | 88  | G12NUT   | 1/2" HDG HEAVY 2H HEX NUT                     |        | 0.07        | 6.30    |
| 14         | 2   | A34234   | 3/4"-10 X 2-3/4" A325 BOLT WITH 1-3/8" THREAD |        | 0.54        | 1.07    |
| 15         | 2   | G34LW    | 3/4" HDG LOCKWASHER                           |        | 0.04        | 0.09    |
| 16         | 2   | G34NUT   | 3/4" HDG HEAVY 2H HEX NUT                     |        | 0.21        | 0.43    |
| 17         | 1   | P1126    | 1 1/4" X 126" SCH 40 PIPE (STIFF ARM)         | 126"   | 25.12       | 25.12   |
|            |     |          |   |        | TOTAL WT. # | 310.46  |



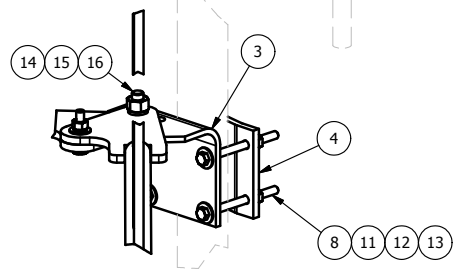
DETAIL A



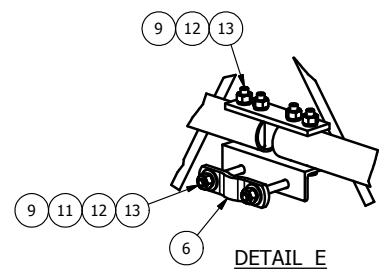
DETAIL B



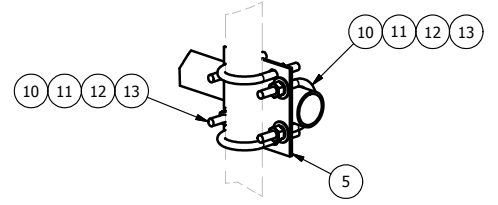
DETAIL C



DETAIL D



DETAIL E




DETAIL F

PATENT#  
7,466,286

**PROPRIETARY NOTE:**  
THE DATA AND TECHNIQUES CONTAINED IN THIS DRAWING ARE PROPRIETARY INFORMATION OF VALMONT INDUSTRIES AND CONSIDERED A TRADE SECRET. ANY USE OR DISCLOSURE WITHOUT THE CONSENT OF VALMONT INDUSTRIES IS STRICTLY PROHIBITED.

**TOLERANCE NOTE:**  
TOLERANCES ON DIMENSIONS UNLESS OTHERWISE NOTED ARE (PLUS OR MINUS) MACHINING 0.030" AND STRUCTURAL 0.060". BENDS ARE (+ OR -) 1/2 DEGREE.

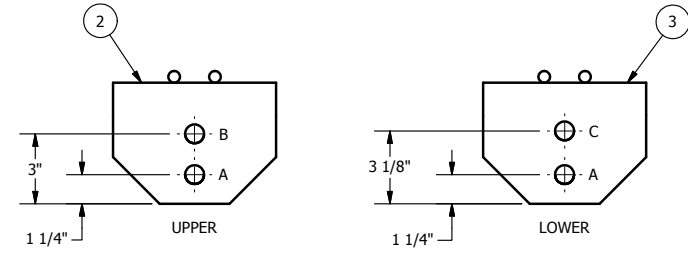
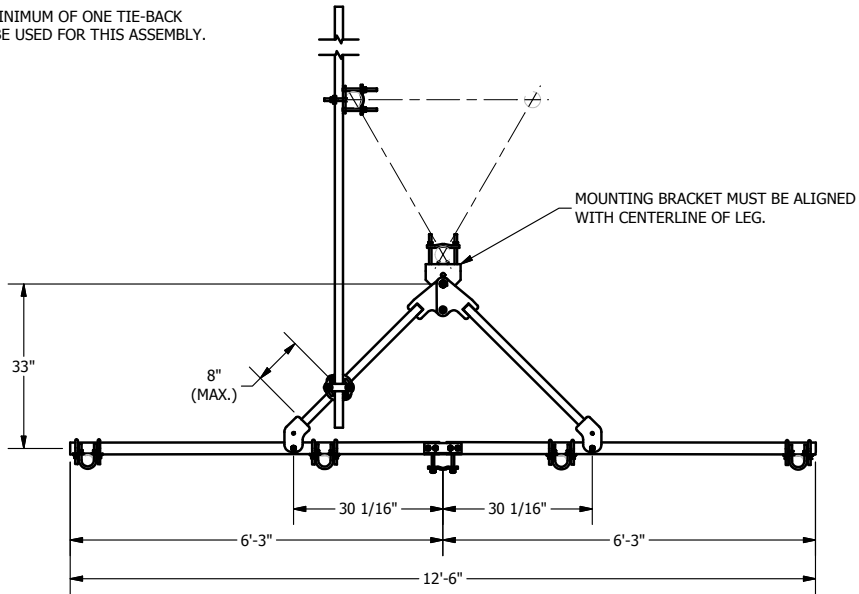
|  |               |               |
|--|---------------|---------------|
| DESCRIPTION                                  |               |               |
| 12'-6"<br>SWIFT DEPLOY FRAME<br>W/ STIFF ARM |               |               |
| DRAWN BY                                     | CPD NO.       | DRAWING USAGE |
| RH18 9/14/2010                               | 4752          | CUSTOMER      |
| ENG. APPROVAL                                | CHECKED BY    |               |
|  | BMC 9/17/2010 |               |

**valmont**   
STRUCTURES

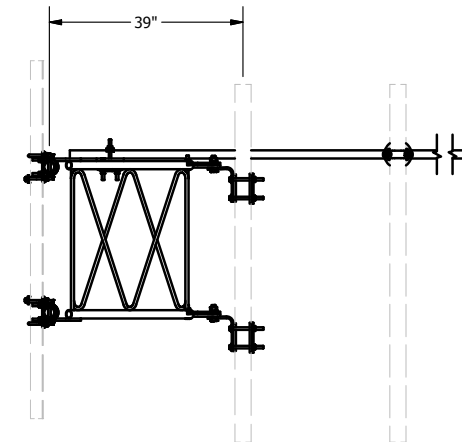
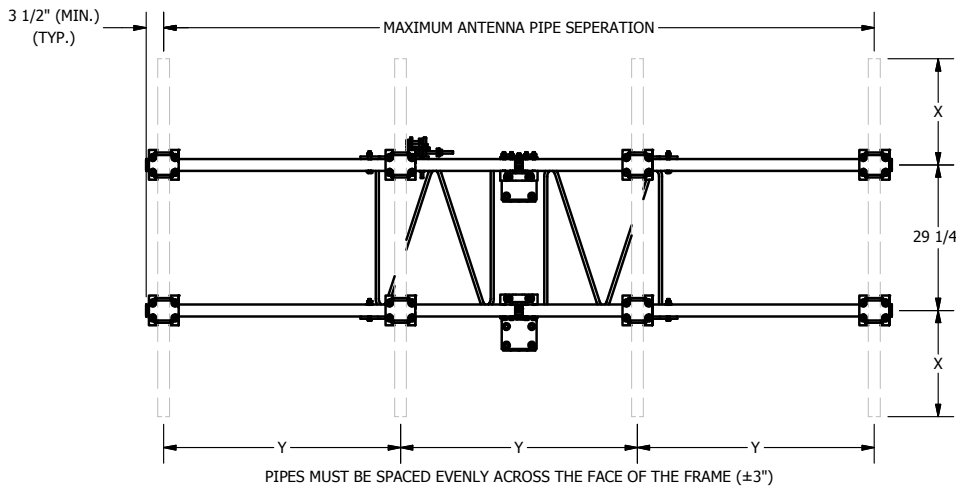
1-877-467-4763 Plymouth, IN  
1-888-880-9191 Salem, OR

|          |         |
|----------|---------|
| PART NO. | SDF12-U |
| DWG. NO. | SDF12-U |

A MINIMUM OF ONE TIE-BACK MUST BE USED FOR THIS ASSEMBLY.



- NOTES:
1. USE HOLE "A" IN UPPER AND LOWER BRACKETS FOR STRAIGHT LEGS.
  2. USE HOLE "A" IN UPPER BRACKET AND HOLE "C" IN LOWER BRACKET FOR 2' IN 20' TAPER LEGS. (3.309°)
  3. USE HOLE "B" IN UPPER BRACKET AND HOLE "C" IN LOWER BRACKET FOR 6" IN 20' TAPER LEGS. (0.827°)




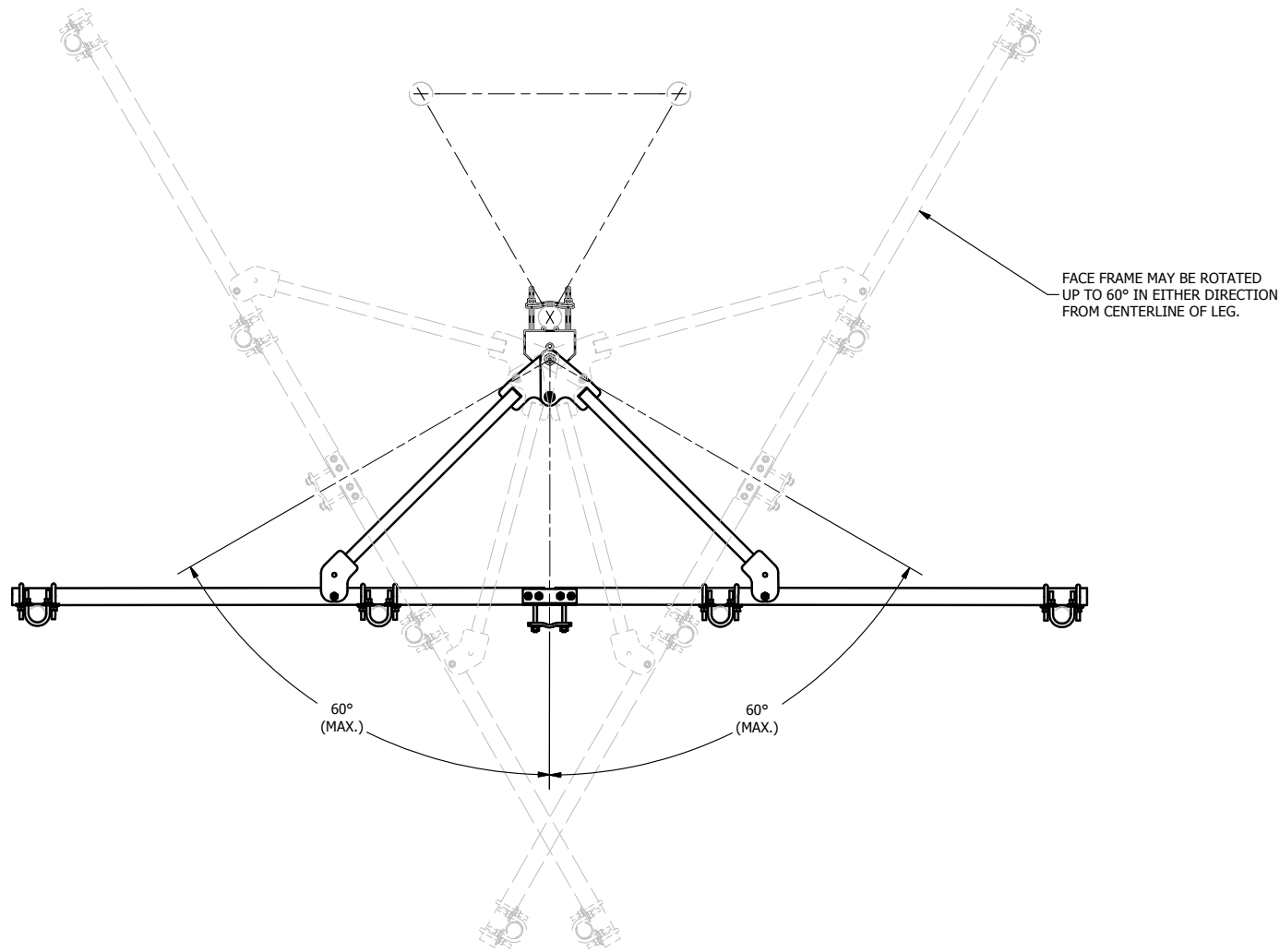
PATENT#  
7,466,286

**PROPRIETARY NOTE:**  
THE DATA AND TECHNIQUES CONTAINED IN THIS DRAWING ARE PROPRIETARY INFORMATION OF VALMONT INDUSTRIES AND CONSIDERED A TRADE SECRET. ANY USE OR DISCLOSURE WITHOUT THE CONSENT OF VALMONT INDUSTRIES IS STRICTLY PROHIBITED.

**TOLERANCE NOTE:**  
TOLERANCES ON DIMENSIONS UNLESS OTHERWISE NOTED ARE (PLUS OR MINUS) MACHINING 0.030" AND STRUCTURAL 0.060". BENDS ARE (+ OR -) 1/2 DEGREE.

|  |               |               |
|--|---------------|---------------|
| DESCRIPTION                                  |               |               |
| 12'-6"<br>SWIFT DEPLOY FRAME<br>W/ STIFF ARM |               |               |
| DRAWN BY                                     | CPD NO.       | DRAWING USAGE |
| RH18 9/14/2010                               | 4752          | CUSTOMER      |
| ENG. APPROVAL                                | CHECKED BY    |               |
|  | BMC 9/17/2010 |               |

|  |         |
|--|---------|
| <b>valmont</b>  |         |
| 1-877-467-4763 Plymouth, IN<br>1-888-880-9191 Salem, OR  |         |
| <b>STRUCTURES</b>  |         |
| PART NO.   | SDF12-U |
| DWG. NO.   | SDF12-U |



PATENT #  
7,466,286

**PROPRIETARY NOTE:**  
THE DATA AND TECHNIQUES CONTAINED IN THIS DRAWING ARE PROPRIETARY INFORMATION OF VALMONT INDUSTRIES AND CONSIDERED A TRADE SECRET. ANY USE OR DISCLOSURE WITHOUT THE CONSENT OF VALMONT INDUSTRIES IS STRICTLY PROHIBITED.

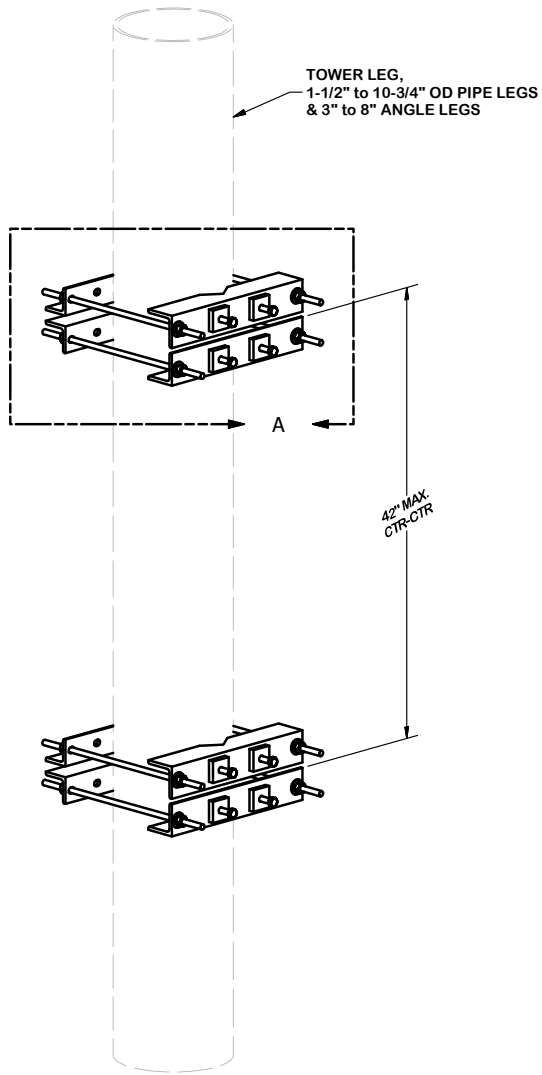
**TOLERANCE NOTE:**  
TOLERANCES ON DIMENSIONS UNLESS OTHERWISE NOTED ARE (PLUS OR MINUS) MACHINING 0.030" AND STRUCTURAL 0.060". BENDS ARE (+ OR -) 1/2 DEGREE.

DESCRIPTION  
12'-6"  
SWIFT DEPLOY FRAME  
W/ STIFF ARM

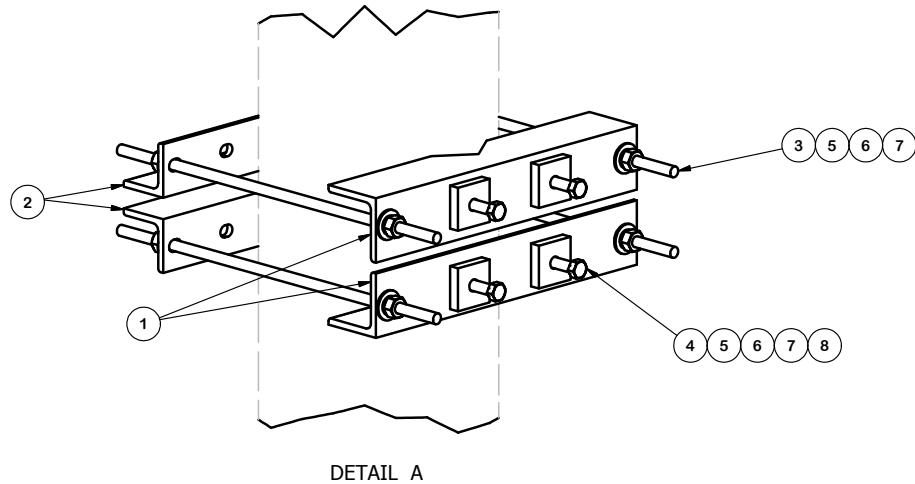
**valmont**   
STRUCTURES  
1-877-467-4763 Plymouth, IN  
1-888-880-9191 Salem, OR

|                  |           |                             |                           |
|------------------|-----------|-----------------------------|---------------------------|
| DRAWN BY<br>RH18 | 9/14/2010 | CPD NO.<br>4752             | DRAWING USAGE<br>CUSTOMER |
| ENG. APPROVAL    |           | CHECKED BY<br>BMC 9/17/2010 |                           |

|                     |                |
|---------------------|----------------|
| PART NO.<br>SDF12-U | 3 OF 3<br>PAGE |
| DWG. NO.<br>SDF12-U |                |



| PARTS LIST |     |          |  |           |             |         |
|------------|-----|----------|--|-----------|-------------|---------|
| ITEM       | QTY | PART NO. | PART DESCRIPTION                             | LENGTH    | UNIT WT.    | NET WT. |
| 1          | 4   | X-158320 | ANGLE CLAMP                                  | 16 1/2 in | 8.51        | 34.03   |
| 2          | 4   | X-126501 | BRACKET ANGLE LEG MOUNTING                   | 16 1/2 in | 7.13        | 28.51   |
| 3          | 8   | G12R-20  | 1/2" x 20" GALV. THREADED ROD                |           | 1.12        | 8.92    |
| 4          | 8   | G1203    | 1/2" x 3" HDG HEX BOLT GR5 FULL THREAD       | 3 in      | 0.22        | 1.74    |
| 5          | 24  | G12FW    | 1/2" HDG USS FLATWASHER                      |           | 0.03        | 0.82    |
| 6          | 24  | G12LW    | 1/2" HDG LOCKWASHER                          |           | 0.01        | 0.33    |
| 7          | 24  | G12NUT   | 1/2" HDG HEAVY 2H HEX NUT                    |           | 0.07        | 1.72    |
| 8          | 8   | X-124312 | 1/2" X 2" X 2" ANGLE SPACER; WITH 9/16" HOLE |           | 0.53        | 4.26    |
|            |     |          |  |           | TOTAL WT. # | 77.61   |



**TOLERANCE NOTES**

**TOLERANCES ON DIMENSIONS, UNLESS OTHERWISE NOTED ARE:  
SAWED, SHEARED AND GAS CUT EDGES ( $\pm 0.030"$ )  
DRILLED AND GAS CUT HOLES ( $\pm 0.030"$ ) - NO CONING OF HOLES  
LASER CUT EDGES AND HOLES ( $\pm 0.010"$ ) - NO CONING OF HOLES  
BENDS ARE  $\pm 1/2$  DEGREE  
ALL OTHER MACHINING ( $\pm 0.030"$ )  
ALL OTHER ASSEMBLY ( $\pm 0.060"$ )**

**PROPRIETARY NOTE:  
THE DATA AND TECHNIQUES CONTAINED IN THIS DRAWING ARE PROPRIETARY INFORMATION OF VALMONT INDUSTRIES AND CONSIDERED A TRADE SECRET. ANY USE OR DISCLOSURE WITHOUT THE CONSENT OF VALMONT INDUSTRIES IS STRICTLY PROHIBITED.**

DESCRIPTION

LARGE LEG  
ADAPTER KIT  
SITE PRO 1

|                 |                            |                             |
|-----------------|----------------------------|-----------------------------|
| CPD NO.<br>4718 | DRAWN BY<br>RH18 3/30/2010 | ENG. APPROVAL               |
| CLASS<br>81     | SUB<br>01                  | DRAWING USAGE<br>CUSTOMER   |
|                 |                            | CHECKED BY<br>BMC 9/16/2010 |



Locations:  
New York, NY  
Atlanta, GA  
Los Angeles, CA  
Plymouth, IN  
Salem, OR  
Dallas, TX

Engineering  
Support Team:  
1-888-753-7446

|                    |                |
|--------------------|----------------|
| PART NO.<br>LLEG-K | PAGE<br>1 OF 1 |
| DWG. NO.<br>LLEG-K |                |