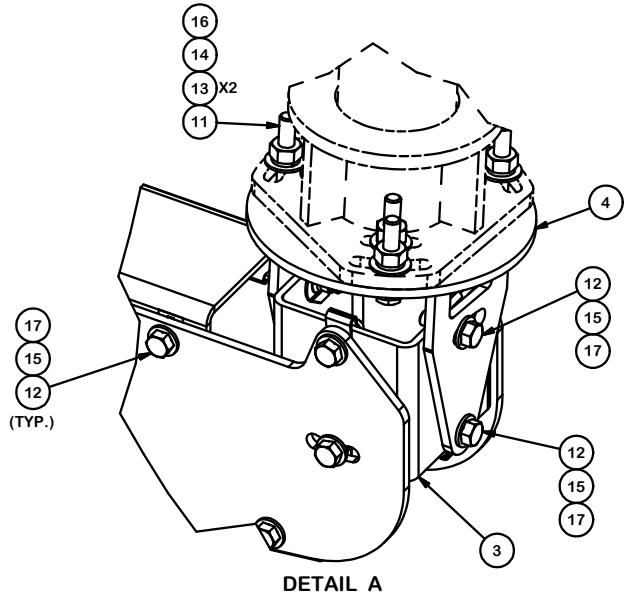
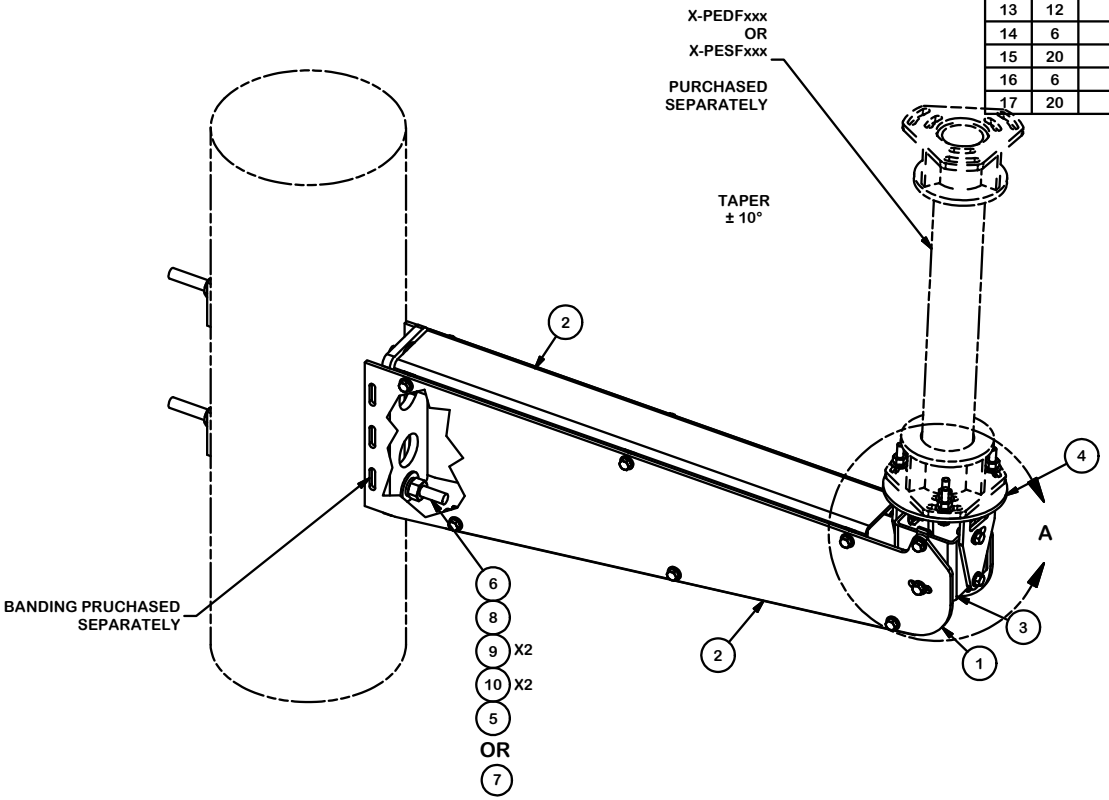


| PARTS LIST | | | | | | |
|------------|-----|-------------|---|----------|-------------|---------|
| ITEM | QTY | PART NO. | PART DESCRIPTION | LENGTH | UNIT WT. | NET WT. |
| 1 | 1 | X-GCSA-36 | WELDMNT FOR 36" CONCEALED SIDE ARM | | 50.47 | 50.47 |
| 2 | 2 | X-GCSA-36BP | TOP / BOTTOM PLATE FOR 36" CONCEALED SIDE ARM WELDMNT | 6 1/4 in | 10.89 | 21.78 |
| 3 | 1 | X-TMHUB | GUMBLE HUB | 4 in | 3.20 | 3.20 |
| 4 | 1 | X-GTP | GIMBLE TOP PLATE WELDMNT | | 4.21 | 4.21 |
| 5 | 2 | BP3-58 | BACKING PLATE FOR 5/8" HARDWARE | 3 in | 0.65 | 1.30 |
| 6 | 2 | G58R-10 | 5/8" x 10" THREADED ROD (HDG.) | | 0.87 | 1.74 |
| 6 | 2 | G58R-18 | 5/8" x 18" THREADED ROD (HDG.) | | 1.57 | 3.14 |
| 7 | 2 | LB5805 | 5/8" DIA. x 5" HEX HEAD LAG BOLT (HDG.) | | 0.38 | 0.77 |
| 8 | 2 | G58FW | 5/8" HDG USS FLATWASHER | 1/8 in | 0.07 | 0.14 |
| 9 | 4 | G58LW | 5/8" HDG LOCKWASHER | | 0.03 | 0.10 |
| 10 | 4 | G58NUT | 5/8" HDG HEAVY 2H HEX NUT | | 0.13 | 0.52 |
| 11 | 6 | G3802 | 3/8" x 2" HDG HEX BOLT GR5 | | 0.09 | 0.53 |
| 12 | 20 | SS38114 | SS 3/8" X 1-1/4" BOLT | 1 1/4 in | 0.06 | 1.19 |
| 13 | 12 | G38FW | 3/8" HDG USS FLATWASHER | | 0.01 | 0.14 |
| 14 | 6 | G38LW | 3/8" HDG LOCKWASHER | | 0.01 | 0.04 |
| 15 | 20 | SS38FW | 3/8" STAINLESS FLATWASHER | | 0.01 | 0.18 |
| 16 | 6 | G38NUT | 3/8" HDG HEAVY 2H HEX NUT | | 0.03 | 0.20 |
| 17 | 20 | RN38-34 | RETAINING NUT 3/8" X 3/4" | | 0.03 | 0.64 |
| | | | | | TOTAL WT. # | 88.54 |



| REV | DESCRIPTION OF REVISIONS | CPD | BY | DATE |
|------------------|---|-----|-----|-----------|
| A | PARTS LIST UPDATED WITH X-GCSA-36 & X-GCSA-36BP | | CEK | 8/30/2019 |
| REVISION HISTORY | | | | |

TOLERANCE NOTES

TOLERANCES ON DIMENSIONS, UNLESS OTHERWISE NOTED ARE:
 SAWED, SHEARED AND GAS CUT EDGES ($\pm 0.030"$)
 DRILLED AND GAS CUT HOLES ($\pm 0.030"$) - NO CONING OF HOLES
 LASER CUT EDGES AND HOLES ($\pm 0.010"$) - NO CONING OF HOLES
 BENDS AND ANGLES ARE $\pm 1/2$ DEGREE
 ALL OTHER MACHINING ($\pm 0.030"$)
 ALL OTHER ASSEMBLY ($\pm 0.060"$)

PROPRIETARY NOTE:
 THE DATA AND TECHNIQUES CONTAINED IN THIS DRAWING ARE PROPRIETARY INFORMATION OF VALMONT INDUSTRIES AND CONSIDERED A TRADE SECRET. ANY USE OR DISCLOSURE WITHOUT THE CONSENT OF VALMONT INDUSTRIES IS STRICTLY PROHIBITED.

| DESCRIPTION | | DRAWN BY | | ENG. APPROVAL | |
|--------------------|---------------|---------------|-----------|---------------|--|
| CONSEALED SIDE AMR | | CEK 5/31/2019 | | | |
| CPD NO. | DRAWING USAGE | CHECKED BY | DATE | | |
| 81 | 02 CUSTOMER | BMC | 8/30/2019 | | |

A valmont COMPANY

Locations:
 New York, NY
 Atlanta, GA
 Los Angeles, CA
 Plymouth, IN
 Salem, OR
 Dallas, TX
 Tampa, FL

Engineering Support Team:
 1-888-753-7446

| | | |
|----------|---------------------|--------|
| PART NO. | SMA-GIMBAL36 | 1 OF 1 |
| DWG. NO. | SMA-GIMBAL36 | |