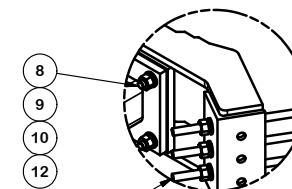
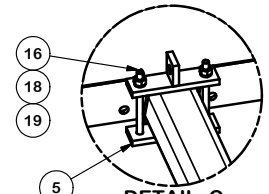


PARTS LIST						
ITEM	QTY	PART NO.	PART DESCRIPTION	LENGTH	UNIT WT.	NET WT.
1	3	X-LWRM	RING MOUNT WELDMENT		68.81	206.42
2	3	X-SNP-STL	SNB8 TELESCOPING ARM FOR GRATING		105.60	316.79
3	3	X-SNPC	CORNER GRATING WELDMENT		194.33	582.99
4	3	P3150	3-1/2" X 150" SCH 40 GALVANIZED PIPE	150.000 in	94.80	284.40
5	3	X-SNPP1G	CLAMP PLATE	7.250 in	2.03	6.10
7	9	G58R-48	5/8" x 48" THREADED ROD (HDG.)		0.40	3.59
7	9	G58R-24	5/8" x 24" THREADED ROD (HDG.)		0.40	3.59
8	12	A58234	5/8" x 2-3/4" HDG A325 HEX BOLT	2.75	0.36	4.27
9	30	A58FW	5/8" HDG A325 FLATWASHER		0.03	1.02
10	42	G58LW	5/8" HDG LOCKWASHER		0.03	1.10
11	18	A58NUT	5/8" HDG A325 HEX NUT		0.13	2.34
12	24	G58NUT	5/8" HDG HEAVY 2H HEX NUT		0.13	3.12
14	12	X-UB1358	1/2" X 3-5/8" X 5-1/2" X 3" U-BOLT (HDG.)		0.26	3.08
16	6	G12065	1/2" x 6-1/2" HDG HEX BOLT GR5 FULL THREAD	7-1/2	0.41	2.46
17	24	G12FW	1/2" HDG USS FLATWASHER		0.03	0.82
18	30	G12LW	1/2" HDG LOCKWASHER		0.01	0.42
19	30	G12NUT	1/2" HDG HEAVY 2H HEX NUT		0.07	2.15
20	3	X-SNPM	GRATING WALKWAY FOR 12' & 14' SNUB NOSE PLATFORM		82.72	248.15
21	24	G58FW	5/8" HDG USS FLATWASHER		0.07	1.69
22	12	G5802	5/8" x 2" HDG HEX BOLT GR5		0.27	3.24
					TOTAL WT. #	1733.18

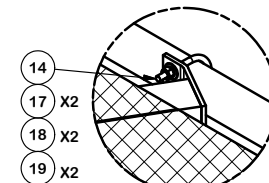


DETAIL A

- 8
- 9
- 10
- 12



DETAIL C



DETAIL B

TOLERANCE NOTES

TOLERANCES ON DIMENSIONS, UNLESS OTHERWISE NOTED ARE:
 SAWED, SHEARED AND GAS CUT EDGES ($\pm 0.030"$)
 DRILLED AND GAS CUT HOLES ($\pm 0.030"$) - NO CONING OF HOLES
 LASER CUT EDGES AND HOLES ($\pm 0.010"$) - NO CONING OF HOLES
 BENDS ARE $\pm 1/2$ DEGREE
 ALL OTHER MACHINING ($\pm 0.030"$)
 ALL OTHER ASSEMBLY ($\pm 0.060"$)

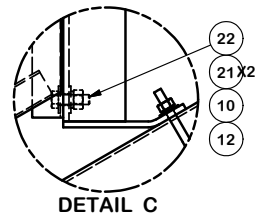
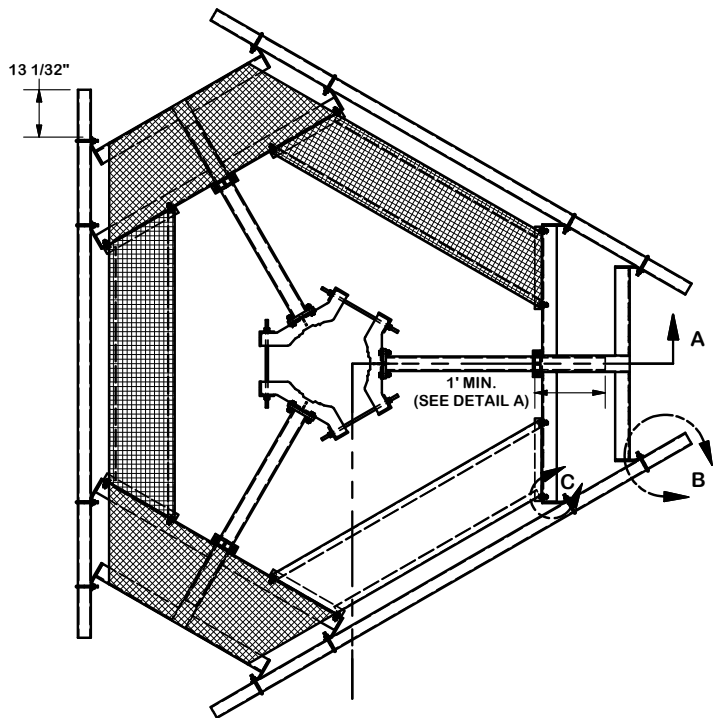
PROPRIETARY NOTE:
 THE DATA AND TECHNIQUES CONTAINED IN THIS DRAWING ARE PROPRIETARY INFORMATION OF VALMONT INDUSTRIES AND CONSIDERED A TRADE SECRET. ANY USE OR DISCLOSURE WITHOUT THE CONSENT OF VALMONT INDUSTRIES IS STRICTLY PROHIBITED.

DESCRIPTION
 12" SNUB NOSE PLATFORM
 WITH NO ANTENNA MOUNTING PIPES
 OR HARDWARE

SITE PRO 1
 Engineering Support Team:
 1-888-753-7446
 Locations:
 New York, NY
 Atlanta, GA
 Los Angeles, CA
 Plymouth, IN
 Salem, OR
 Dallas, TX

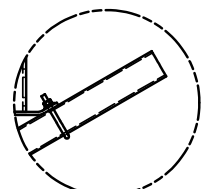
CPD NO.	DRAWN BY CEK 7/24/2015	ENG. APPROVAL
CLASS 81	SUB 02	DRAWING USAGE CUSTOMER
	CHECKED BY BMC 7/24/2015	

PART NO. SNP12-NP	DWG. NO. SNP12-NP
----------------------	----------------------

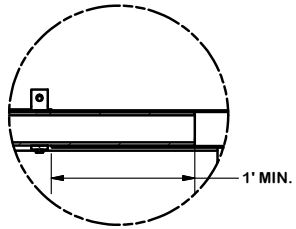


DETAIL C

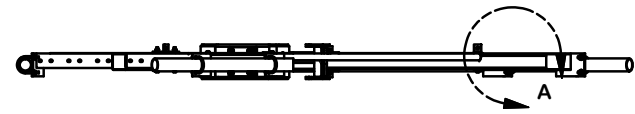
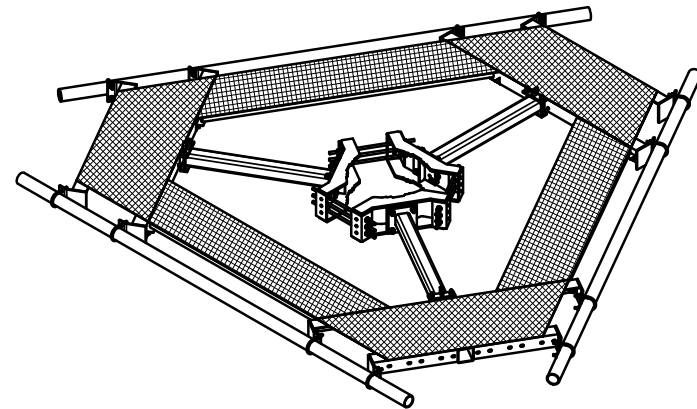
NOTE:
GRATING REMOVED
FOR CLARITY



DETAIL B



DETAIL A



SECTION A-A



TOLERANCE NOTES
 TOLERANCES ON DIMENSIONS, UNLESS OTHERWISE NOTED ARE:
 SAWED, SHEARED AND GAS CUT EDGES ($\pm 0.030"$)
 DRILLED AND GAS CUT HOLES ($\pm 0.030"$) - NO CONING OF HOLES
 LASER CUT EDGES AND HOLES ($\pm 0.010"$) - NO CONING OF HOLES
 BENDS ARE $\pm 1/2$ DEGREE
 ALL OTHER MACHINING ($\pm 0.030"$)
 ALL OTHER ASSEMBLY ($\pm 0.060"$)

PROPRIETARY NOTE:
 THE DATA AND TECHNIQUES CONTAINED IN THIS DRAWING ARE PROPRIETARY INFORMATION OF VALMONT INDUSTRIES AND CONSIDERED A TRADE SECRET. ANY USE OR DISCLOSURE WITHOUT THE CONSENT OF VALMONT INDUSTRIES IS STRICTLY PROHIBITED.

DESCRIPTION		12" SNUB NOSE PLATFORM WITH NO ANTENNA MOUNTING PIPES OR HARDWARE	
CPD NO.	DRAWN BY	ENG. APPROVAL	PART NO.
	CEK 7/24/2015		SNP12-NP
CLASS	SUB	DRAWING USAGE	CHECKED BY
81	02	CUSTOMER	BMC 7/24/2015
DWG. NO.		SNP12-NP	

	Engineering Support Team: 1-888-753-7446	Locations: New York, NY Atlanta, GA Los Angeles, CA Plymouth, IN Salem, OR Dallas, TX
	A valmont COMPANY	