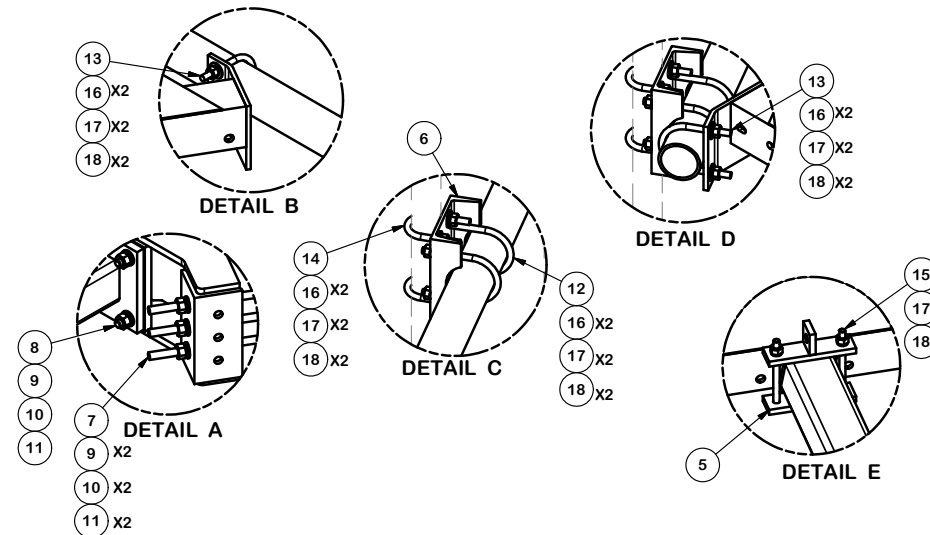


PARTS LIST						
ITEM	QTY	PART NO.	PART DESCRIPTION	LENGTH	UNIT WT.	NET WT.
1	3	X-LWRM	RING MOUNT WELDMENT			206.42
2	3	X-SNP-ST8	SNB8 TELESCOPING ARM FOR GRATING		68.81	181.16
3	3	X-SNPC	CORNER GRATING WELDMENT		194.33	582.99
4	3	P396	3" SCH. 40 PIPE (3.5" O.D. x 0.216" WALL) A500	96.000 in	60.75	182.25
5	3	X-SNPP1G	CLAMP PLATE	7.250 in	2.03	6.10
6	9	X-SP219	SMALL SUPPORT CROSS PLATE	8.250 in	8.61	77.50
7	9	G58R-48	5/8" x 48" THREADED ROD (HDG.)		0.55	4.94
7	9	G58R-24	5/8" x 24" THREADED ROD (HDG.)		0.55	4.94
8	12	A58234	5/8" x 2-3/4" HDG A325 HEX BOLT	2.75	0.36	4.27
9	30	A58FW	5/8" HDG A325 FLATWASHER		0.03	1.02
10	30	G58LW	5/8" HDG LOCKWASHER		0.03	0.78
11	30	G58NUT	5/8" HDG HEAVY 2H HEX NUT		0.13	3.90
12	18	X-UB1306	1/2" X 3-5/8" X 6" X 3" U-BOLT (HDG.)		0.73	13.17
13	12	X-UB1358	1/2" X 3-5/8" X 5-1/2" X 3" U-BOLT (HDG.)		0.73	8.78
14	18	X-UB1212	1/2" X 2-1/2" X 4-1/2" X 2" U-BOLT (HDG.)		0.73	13.17
15	6	G12065	1/2" x 6-1/2" HDG HEX BOLT GR5 FULL THREAD	7-1/2	0.41	2.46
16	96	G12FW	1/2" HDG USS FLATWASHER		0.03	3.27
17	102	G12LW	1/2" HDG LOCKWASHER		0.01	1.42
18	102	G12NUT	1/2" HDG HEAVY 2H HEX NUT		0.07	7.31
19	9	A	2" SCH. 40 PIPE (2.375" O.D. x 0.154" WALL) A500	B	C	D

2-3/8" O.D. VERTICAL MOUNTING PIPES					
ASSEMBLY NO.	PART NO. "A"	LENGTH "B"	UNIT WEIGHT "C"	NET WEIGHT "D"	TOTAL WEIGHT
SNP8-372	P272	6'-0"	23.07	207.63	1393.96
SNP8-384	P284	7'-0"	26.91	242.19	1428.52
SNP8-396	P296	8'-0"	30.76	276.84	1463.17
SNP8-3126	P2126	10'-6"	40.75	366.75	1584.91



**TOLERANCE NOTES**

TOLERANCES ON DIMENSIONS, UNLESS OTHERWISE NOTED ARE:  
 SAWED, SHEARED AND GAS CUT EDGES ( $\pm 0.030"$ )  
 DRILLED AND GAS CUT HOLES ( $\pm 0.030"$ ) - NO CONING OF HOLES  
 LASER CUT EDGES AND HOLES ( $\pm 0.010"$ ) - NO CONING OF HOLES  
 BENDS ARE  $\pm 1/2$  DEGREE  
 ALL OTHER MACHINING ( $\pm 0.030"$ )  
 ALL OTHER ASSEMBLY ( $\pm 0.060"$ )

PROPRIETARY NOTE:  
 THE DATA AND TECHNIQUES CONTAINED IN THIS DRAWING ARE PROPRIETARY INFORMATION OF VALMONT INDUSTRIES AND CONSIDERED A TRADE SECRET. ANY USE OR DISCLOSURE WITHOUT THE CONSENT OF VALMONT INDUSTRIES IS STRICTLY PROHIBITED.

DESCRIPTION  
**8' SNUB NOSE PLATFORM**

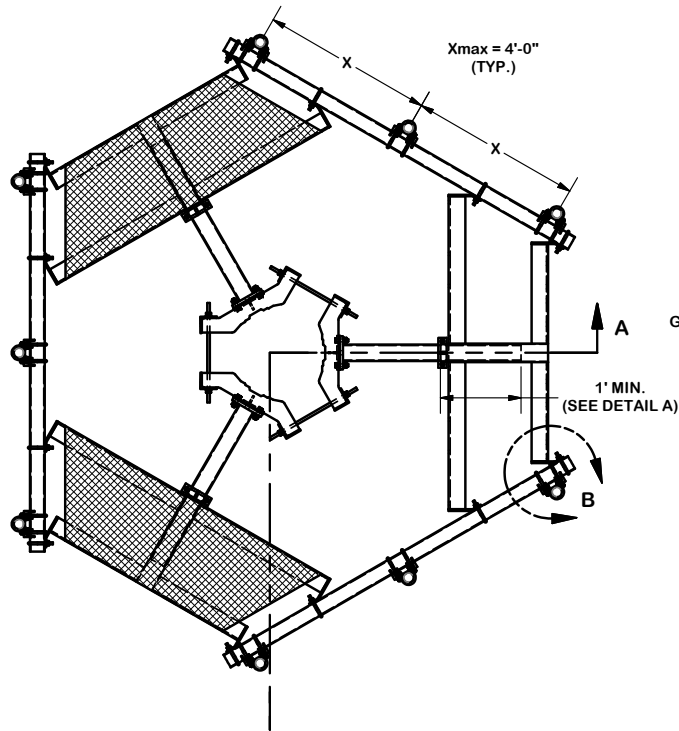
CPD NO.	DRAWN BY	ENG. APPROVAL
CLASS	CEK 11/19/2014	CHECKED BY
81	02	BMC 11/21/2014
DRAWING USAGE	CUSTOMER	

**SITE PRO 1**  
 Engineering Support Team:  
 1-888-753-7446

Locations:  
 New York, NY  
 Atlanta, GA  
 Los Angeles, CA  
 Plymouth, IN  
 Salem, OR  
 Dallas, TX

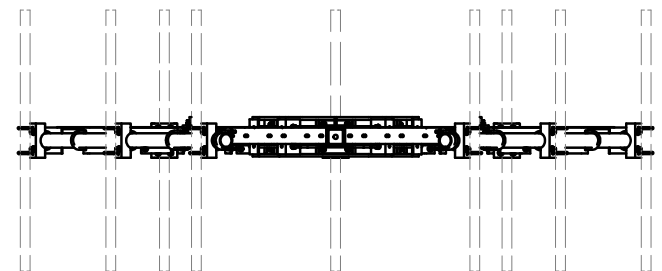
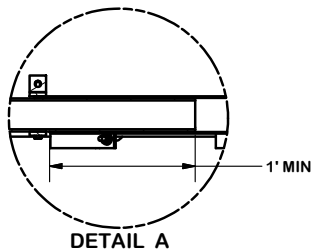
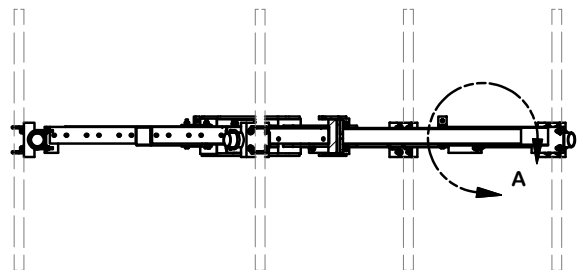
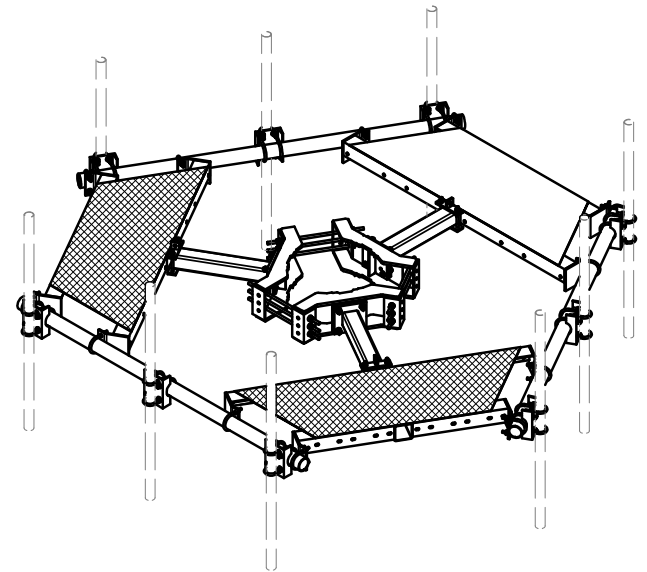
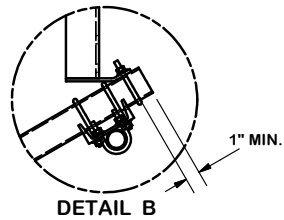
A valmont COMPANY

PART NO.	SEE ASSEMBLY NO.	PAGE
DWG. NO.	SNP8-3XX	1 OF 2



NOTE:  
GRATING REMOVED  
FOR CLARITY

1' MIN.  
(SEE DETAIL A)



SECTION A-A

**TOLERANCE NOTES**

TOLERANCES ON DIMENSIONS, UNLESS OTHERWISE NOTED ARE:  
 SAWED, SHEARED AND GAS CUT EDGES ( $\pm 0.030"$ )  
 DRILLED AND GAS CUT HOLES ( $\pm 0.030"$ ) - NO CONING OF HOLES  
 LASER CUT EDGES AND HOLES ( $\pm 0.010"$ ) - NO CONING OF HOLES  
 BENDS ARE  $\pm 1/2$  DEGREE  
 ALL OTHER MACHINING ( $\pm 0.030"$ )  
 ALL OTHER ASSEMBLY ( $\pm 0.060"$ )

PROPRIETARY NOTE:  
 THE DATA AND TECHNIQUES CONTAINED IN THIS DRAWING ARE PROPRIETARY INFORMATION OF VALMONT INDUSTRIES AND CONSIDERED A TRADE SECRET. ANY USE OR DISCLOSURE WITHOUT THE CONSENT OF VALMONT INDUSTRIES IS STRICTLY PROHIBITED.

DESCRIPTION  
**8' SNUB NOSE  
 PLATFORM**

CPD NO.	DRAWN BY CEK 11/19/2014	ENG. APPROVAL
CLASS 81	SUB 02	DRAWING USAGE CUSTOMER
	CHECKED BY BMC 11/21/2014	

**SITE PRO 1**  
 Engineering Support Team:  
 1-888-753-7446  
 Locations:  
 New York, NY  
 Atlanta, GA  
 Los Angeles, CA  
 Plymouth, IN  
 Salem, OR  
 Dallas, TX

PART NO.	<b>SEE ASSEMBLY NO.</b>	PAGE 2 OF 2
DWG. NO.	<b>SNP8-3XX</b>	