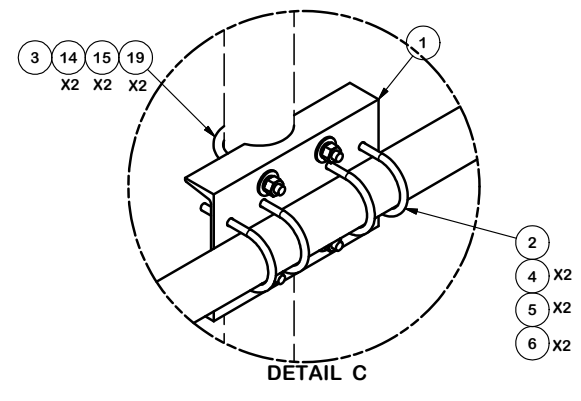
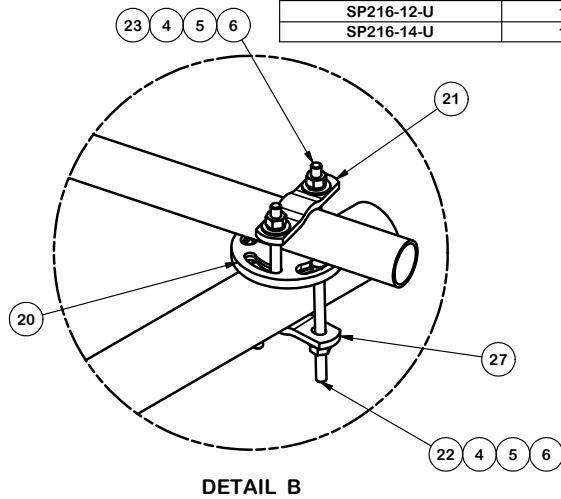
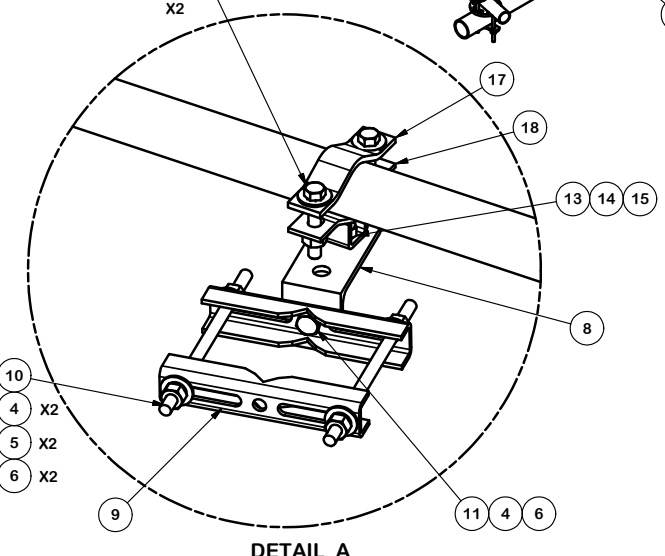


PARTS LIST						
ITEM	QTY	PART NO.	PART DESCRIPTION	LENGTH	UNIT WT.	NET WT.
1	1	X-SP216	LARGE SUPPORT CROSS PLATE		20.83	20.83
2	4	X-UB1306	1/2" X 3-5/8" X 6" X 3" U-BOLT (HDG.)		0.66	2.63
3	2	X-UB5458	5/8" X 4-5/8" X 7" X 3" U-BOLT (HDG.)		0.66	1.31
4	30	G12NUT	1/2" HDG HEAVY 2H HEX NUT		0.07	2.15
5	32	G12FW	1/2" HDG USS FLATWASHER		0.03	1.09
6	30	G12LW	1/2" HDG LOCKWASHER		0.01	0.42
7	"B"	"C"	3-1/2" OD PIPE (SEE VARIABLE PIPE LENGTH TABLE)	"D"	"E"	"F"
8	2	X-STA3	STIFF ARM ANGLE BRACKET	2-1/2	1.39	2.78
9	4	X-STU	STIFF ARM CHANNEL BRACKET		1.37	2.74
10	4	G12R-10	1/2" x 10" THREADED ROD (HDG.)		0.55	2.20
11	2	G12112	1/2" x 1-1/2" HDG HEX BOLT GR5	1 1/2	0.15	0.30
12	4	G1203	1/2" x 3" HDG HEX BOLT GR5 FULL THREAD	3	0.22	0.87
13	2	G58112	5/8" x 1-1/2" HDG BOLT	1-1/2	0.25	0.49
14	7	G58LW	5/8" HDG LOCKWASHER		0.03	0.18
15	6	G58NUT	5/8" HDG HEAVY 2H HEX NUT		0.13	0.78
16	2	P2150	2-3/8" OD X 150" SCH 40 GALVANIZED PIPE	150 in	48.06	48.06
17	2	ACP	4-1/16" CLAMP HALF, 1/4" THK.		0.65	0.65
18	2	SAM	STIFF ARM MOUNT CLAMP		0.77	0.77
19	4	G58FW	5/8" HDG USS FLATWASHER		0.07	0.28
20	2	X-127594	FLAT DISK CLAMP PLATE 4" CENTERS (GALVANIZED)		2.48	2.48
21	4	X-100064	CLAMP (S) (4" V-CLAMP) GALVANIZED		0.91	1.83
22	4	G12065	1/2" x 6-1/2" HDG HEX BOLT GR5 FULL THREAD	7-1/2	0.41	1.64
23	4	G1204	1/2" x 4" HDG HEX BOLT GR5 FULL THREAD	4	0.27	1.08

VARIABLE PIPE LENGTH						
ASSEMBLY "A"	QTY "B"	PART "C"	LENGTH "D"	UNIT WT. "E"	NET WT. "F"	TOTAL WEIGHT
SP216-12-U	1	P3150	150"	94.92	94.92	192.95
SP216-14-U	1	P3174	174"	110.11	110.11	208.14



**TOLERANCE NOTES**  
 TOLERANCES ON DIMENSIONS, UNLESS OTHERWISE NOTED ARE:  
 SAWED, SHEARED AND GAS CUT EDGES ( $\pm 0.030"$ )  
 DRILLED AND GAS CUT HOLES ( $\pm 0.030"$ ) - NO CONING OF HOLES  
 LASER CUT EDGES AND HOLES ( $\pm 0.010"$ ) - NO CONING OF HOLES  
 BENDS ARE  $\pm 1/2$  DEGREE  
 ALL OTHER MACHINING ( $\pm 0.030"$ )  
 ALL OTHER ASSEMBLY ( $\pm 0.060"$ )

PROPRIETARY NOTE:  
 THE DATA AND TECHNIQUES CONTAINED IN THIS DRAWING ARE PROPRIETARY INFORMATION OF VALMONT INDUSTRIES AND CONSIDERED A TRADE SECRET. ANY USE OR DISCLOSURE WITHOUT THE CONSENT OF VALMONT INDUSTRIES IS STRICTLY PROHIBITED.

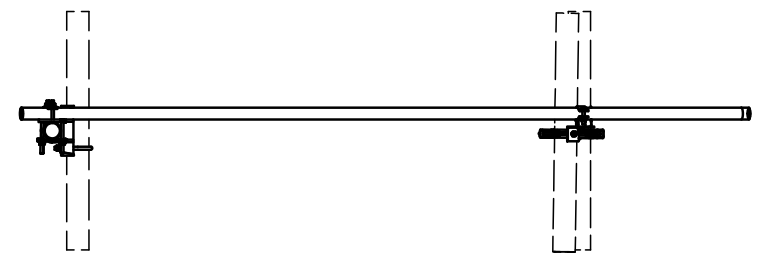
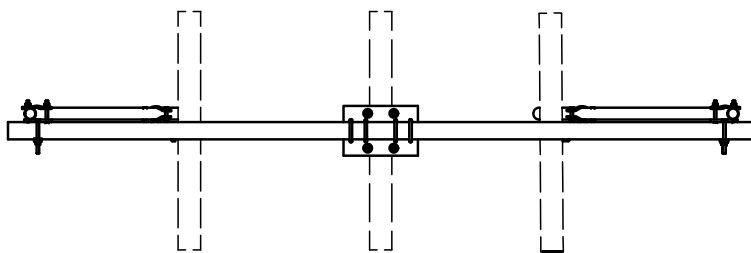
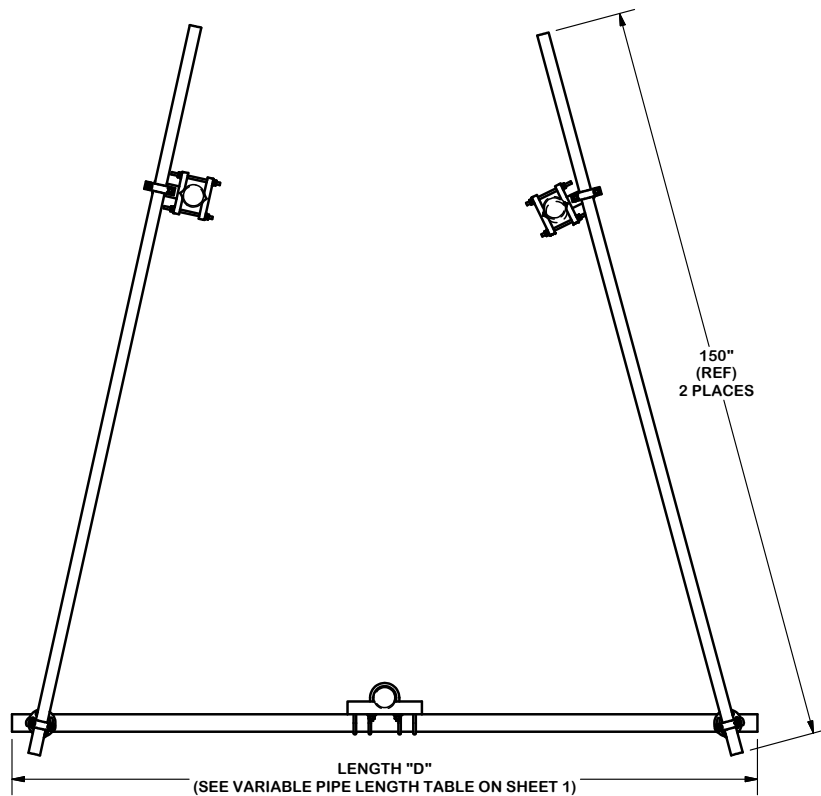
DESCRIPTION		SP216 CELLULAR PIPE FRAME WITH TWO STIFF ARMS	
CPD NO.	DRAWN BY	ENG. APPROVAL	
	KC8 8/14/2012		
CLASS	SUB	DRAWING USAGE	CHECKED BY
81	01	CUSTOMER	CEK 2/18/2013

Engineering Support Team:  
1-888-753-7446

A valmont COMPANY

Locations:  
New York, NY  
Atlanta, GA  
Los Angeles, CA  
Plymouth, IN  
Salem, OR  
Dallas, TX

PART NO.	<b>SEE ASSEMBLY "A"</b>	PAGE
DWG. NO.	<b>SP216-XX-U</b>	1 OF 2



**TOLERANCE NOTES**

TOLERANCES ON DIMENSIONS, UNLESS OTHERWISE NOTED ARE:  
 SAWED, SHEARED AND GAS CUT EDGES ( $\pm 0.030"$ )  
 DRILLED AND GAS CUT HOLES ( $\pm 0.030"$ ) - NO CONING OF HOLES  
 LASER CUT EDGES AND HOLES ( $\pm 0.010"$ ) - NO CONING OF HOLES  
 BENDS ARE  $\pm 1/2$  DEGREE  
 ALL OTHER MACHINING ( $\pm 0.030"$ )  
 ALL OTHER ASSEMBLY ( $\pm 0.060"$ )

PROPRIETARY NOTE:  
 THE DATA AND TECHNIQUES CONTAINED IN THIS DRAWING ARE PROPRIETARY INFORMATION OF VALMONT INDUSTRIES AND CONSIDERED A TRADE SECRET. ANY USE OR DISCLOSURE WITHOUT THE CONSENT OF VALMONT INDUSTRIES IS STRICTLY PROHIBITED.

DESCRIPTION

SP216 CELLULAR PIPE FRAME  
 WITH TWO STIFF ARMS

CPD NO.	DRAWN BY	ENG. APPROVAL
81	KC8 8/14/2012	
CLASS	DRAWING USAGE	CHECKED BY
81	CUSTOMER	CEK 2/18/2013



Engineering  
 Support Team:  
 1-888-753-7446

Locations:  
 New York, NY  
 Atlanta, GA  
 Los Angeles, CA  
 Plymouth, IN  
 Salem, OR  
 Dallas, TX

PART NO.	SEE ASSEMBLY "A"
DWG. NO.	SP216-XX-U