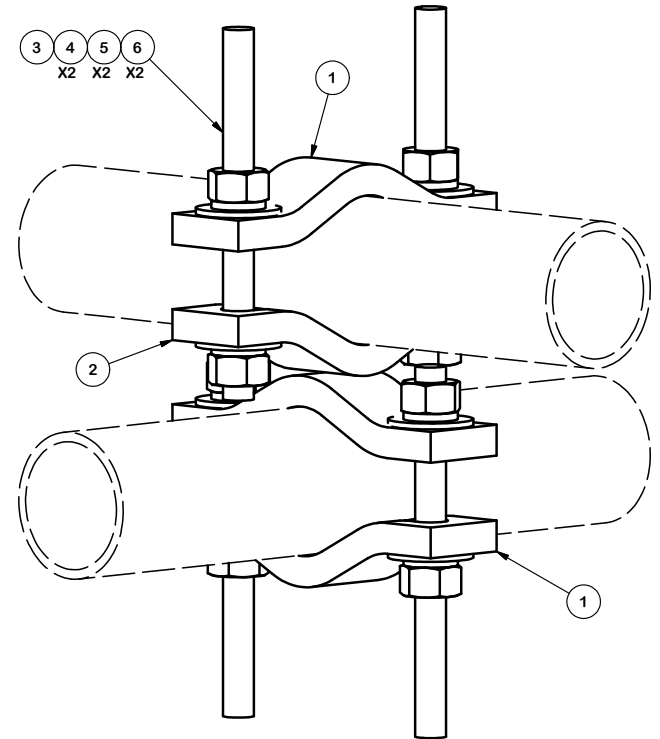
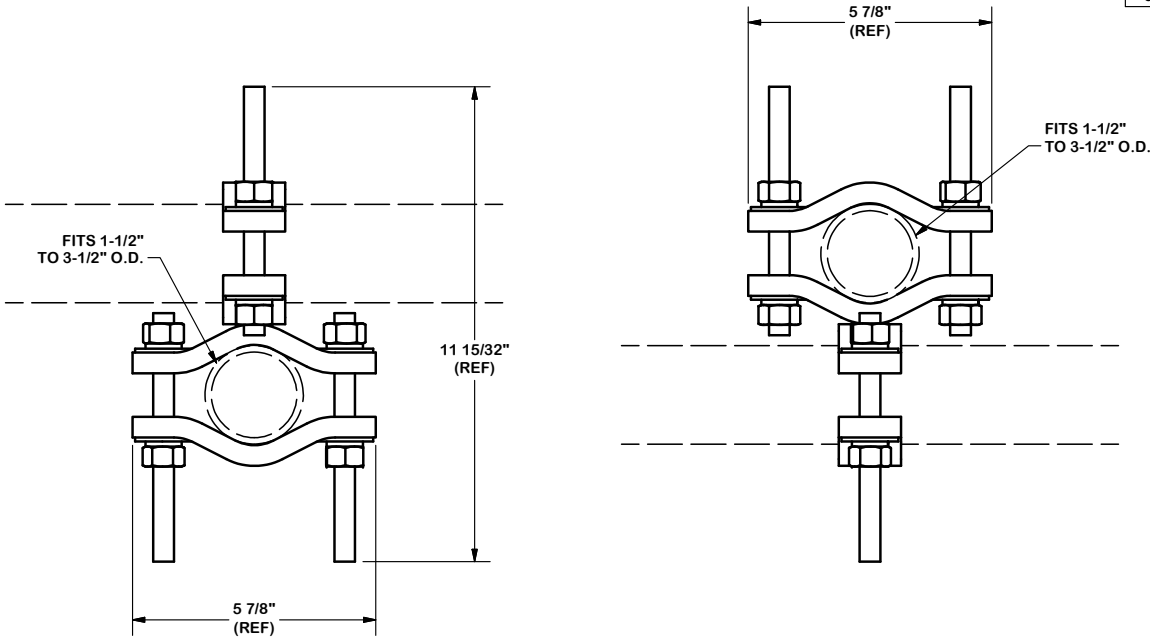


PARTS LIST						
ITEM	QTY	PART NO.	PART DESCRIPTION	LENGTH	UNIT WT.	NET WT.
1	2	SCP	CLAMP HALF, 5-7/8" LONG		1.25	2.50
2	1	SSC	CROSSOVER CLAMP WELDMENT		2.50	2.50
3	4	G12R-6	1/2" x 6" THREADED ROD (HDG.)	6"	3.23	12.91
4	8	G12NUT	1/2" HDG HEAVY 2H HEX NUT		0.07	0.57
5	8	G12LW	1/2" HDG LOCKWASHER		0.01	0.11
6	8	G12FW	1/2" HDG USS FLATWASHER		0.03	0.27
					TOTAL WT. #	7.05



TOLERANCE NOTES

TOLERANCES ON DIMENSIONS, UNLESS OTHERWISE NOTED ARE:
 SAWED, SHEARED AND GAS CUT EDGES ($\pm 0.030"$)
 DRILLED AND GAS CUT HOLES ($\pm 0.030"$) - NO CONING OF HOLES
 LASER CUT EDGES AND HOLES ($\pm 0.010"$) - NO CONING OF HOLES
 BENDS ARE $\pm 1/2$ DEGREE
 ALL OTHER MACHINING ($\pm 0.030"$)
 ALL OTHER ASSEMBLY ($\pm 0.060"$)

PROPRIETARY NOTE:
 THE DATA AND TECHNIQUES CONTAINED IN THIS DRAWING ARE PROPRIETARY INFORMATION OF VALMONT INDUSTRIES AND CONSIDERED A TRADE SECRET. ANY USE OR DISCLOSURE WITHOUT THE CONSENT OF VALMONT INDUSTRIES IS STRICTLY PROHIBITED.

DESCRIPTION
 CROSSOVER CLAMP SET
 1-1/2" TO 3-1/2" O.D.



Engineering Support Team:
 1-888-753-7446

Locations:
 New York, NY
 Atlanta, GA
 Los Angeles, CA
 Plymouth, IN
 Salem, OR
 Dallas, TX

REV	DESCRIPTION OF REVISIONS	CPD	BY	DATE
A	REDRAWN IN INV. UPDATED VIEWS & TABLE		KC8	8/22/2012

CPD NO.	DRAWN BY	ENG. APPROVAL
81	GLS 2/3/2009	CEK 2/16/2013

PART NO.	DWG. NO.
SSCK	SSCK