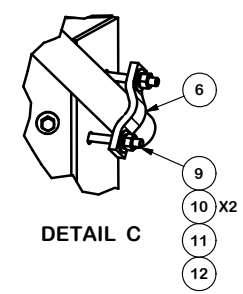
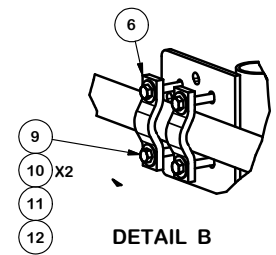
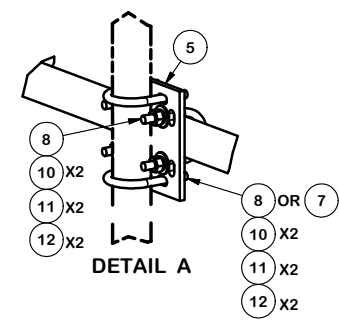


PARTS LIST						
ITEM	QTY	PART NO.	PART DESCRIPTION	LENGTH	UNIT WT.	NET WT.
1	2	X-TP50	TALL BASE WELDMENT FOR TP1 ONE-SECTOR TRIPOD		89.24	178.48
2	1	X-TP25	SHORT BASE WELDMENT FOR TP1 ONE-SECTOR TRIPOD		42.71	42.71
3	2	P2126	2-3/8" X 126" (2" SCH. 40) GALVANIZED PIPE	126 in	40.75	81.50
4	2	P2120	2-3/8" x 120" (2" SCH. 40) GALVANIZED PIPE	120 in	38.81	77.62
5	8	SCX2	CROSSOVER PLATE	7 in	4.80	38.37
6	14	SCP	CLAMP HALF, 1/2" x 5-3/4"		1.29	18.10
7	16	X-UB1300	1/2" X 3" X 5" X 2" U-BOLT (HDG.)		0.67	10.70
8	32	X-UB1212	1/2" X 2-1/2" X 4-1/2" X 2" U-BOLT (HDG.)		0.60	19.11
9	28	G1204	1/2" x 4" HDG HEX BOLT GR5 FULL THREAD	4 in	0.27	7.56
10	120	G12FW	1/2" HDG USS FLATWASHER	3/32 in	0.03	4.09
11	92	G12LW	1/2" HDG LOCKWASHER	1/8 in	0.01	1.28
12	92	G12NUT	1/2" HDG HEAVY 2H HEX NUT		0.07	6.59



**TOLERANCE NOTES**  
 TOLERANCES ON DIMENSIONS, UNLESS OTHERWISE NOTED ARE:  
 SAWED, SHEARED AND GAS CUT EDGES ( $\pm 0.030"$ )  
 DRILLED AND GAS CUT HOLES ( $\pm 0.030"$ ) - NO CONING OF HOLES  
 LASER CUT EDGES AND HOLES ( $\pm 0.010"$ ) - NO CONING OF HOLES  
 BENDS AND ANGLES ARE  $\pm 1/2$  DEGREE  
 ALL OTHER MACHINING ( $\pm 0.030"$ )  
 ALL OTHER ASSEMBLY ( $\pm 0.060"$ )

**PROPRIETARY NOTE:**  
 THE DATA AND TECHNIQUES CONTAINED IN THIS DRAWING ARE PROPRIETARY INFORMATION OF VALMONT INDUSTRIES AND CONSIDERED A TRADE SECRET. ANY USE OR DISCLOSURE WITHOUT THE CONSENT OF VALMONT INDUSTRIES IS STRICTLY PROHIBITED.

DESCRIPTION		PENETRATING ROOFTOP MOUNT WITH 10' 6" FACE	
CPD NO.	DRAWN BY	ENG. APPROVAL	
	CEK 8/12/2019		
CLASS	SUB	DRAWING USAGE	CHECKED BY
81	01	CUSTOMER	BMC 8/22/2019

 A valmont COMPANY	Locations: New York, NY Atlanta, GA Los Angeles, CA Plymouth, IN Salem, OR Dallas, TX Tampa, FL
	Engineering Support Team: 1-888-753-7446
PART NO.	TP1-10
DWG. NO.	TP1-10