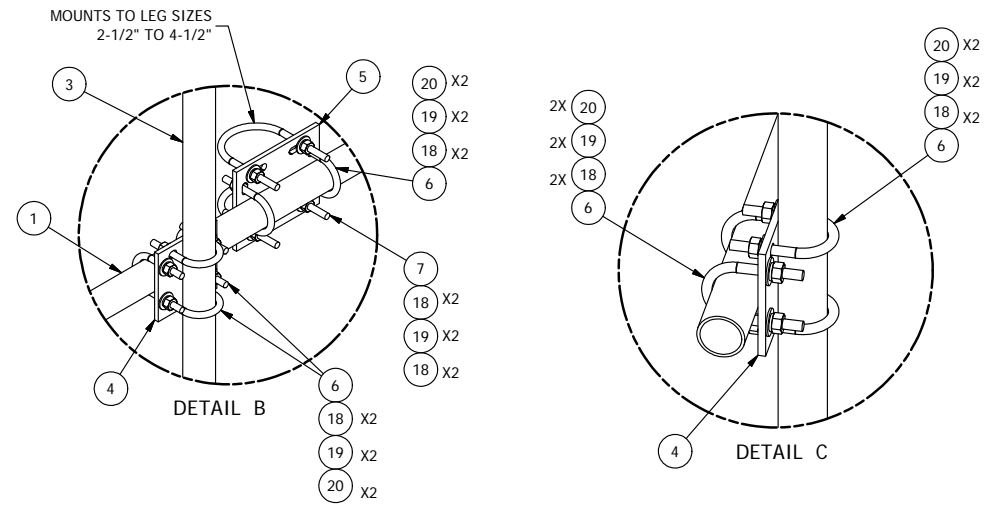


PARTS LIST						
ITEM	QTY	PART NO.	PART DESCRIPTION	LENGTH	UNIT WT.	NET WT.
1	2	P2126	2-3/8" OD X 126" SCH 40 GALVANIZED PIPE	126"	40.75	81.50
2	1	P2150	2-3/8" OD X 150" SCH 40 GALVANIZED PIPE	150.0000 in	45.77	45.77
3	3	A	2-3/8" ANTENNA MOUNTING PIPE	B	C	D
4	7	SCX1	CROSSOVER PLATE 2-3/8" X 2-3/8"		3.71	25.96
5	2	SCX4	CROSSOVER PLATE	8.500 in	6.02	12.04
6	32	X-UB1212	1/2" X 2-1/2" X 4-1/2" X 2" U-BOLT (HDG.)		0.26	8.22
7	4	X-UB1458	1/2" X 4-5/8" X 7" X 3" U-BOLT (HDG.)		0.26	1.03
7	4	X-UB1358	1/2" X 3-5/8" X 5-1/2" X 3" U-BOLT (HDG.)		0.26	1.03
8	1	X-STA3	STIFF ARM ANGLE BRACKET	2.500 in	1.39	1.39
9	2	X-STU	STIFF ARM CHANNEL BRACKET		1.37	2.74
10	2	G12R-10	1/2" x 10" THREADED ROD (HDG.)		0.40	0.80
11	1	G12112	1/2" x 1-1/2" HDG HEX BOLT GR5	1-1/2"	0.15	0.15
12	2	G1203	1/2" x 3" HDG HEX BOLT GR5 FULL THREAD	3"	0.22	0.43
13	1	G58112	5/8" x 1-1/2" HDG BOLT	1-1/2"	0.25	0.25
14	1	G58LW	5/8" HDG LOCKWASHER		0.03	0.03
15	1	G58NUT	5/8" HDG HEAVY 2H HEX NUT		0.13	0.13
16	1	ACP	4-1/16" CLAMP HALF, 1/4" THK.		0.65	0.65
17	1	SAM	STIFF ARM MOUNT CLAMP		0.77	0.77
18	89	G12FW	1/2" HDG USS FLATWASHER		0.03	3.03
19	87	G12LW	1/2" HDG LOCKWASHER		0.01	1.21
20	87	G12NUT	1/2" HDG HEAVY 2H HEX NUT		0.07	6.23

2-3/8" ANTENNA MOUNTING PIPES				
PART NO. "A"	LENGTH, B	UNIT WEIGHT, C	NET WEIGHT, D	TOTAL WEIGHT
TPF10372	72"	23.07	69.20	280.42
TPF10396	96"	30.76	92.27	302.66



TOLERANCE NOTES

**TOLERANCES ON DIMENSIONS, UNLESS OTHERWISE NOTED ARE:
 SAWED, SHEARED AND GAS CUT EDGES ($\pm 0.030"$)
 DRILLED AND GAS CUT HOLES ($\pm 0.030"$) - NO CONING OF HOLES
 LASER CUT EDGES AND HOLES ($\pm 0.010"$) - NO CONING OF HOLES
 BENDS ARE $\pm 1/2$ DEGREE
 ALL OTHER MACHINING ($\pm 0.030"$)
 ALL OTHER ASSEMBLY ($\pm 0.060"$)**

**PROPRIETARY NOTE:
 THE DATA AND TECHNIQUES CONTAINED IN THIS DRAWING ARE PROPRIETARY INFORMATION OF VALMONT INDUSTRIES AND CONSIDERED A TRADE SECRET. ANY USE OR DISCLOSURE WITHOUT THE CONSENT OF VALMONT INDUSTRIES IS STRICTLY PROHIBITED.**

DESCRIPTION
 10' 6" TOWER PIPE FRAME
 WITH THREE
 2-3/8" ANTENNA PIPES

CPD NO.	DRAWN BY	ENG. APPROVAL
CLASS	DRAWING USAGE	CHECKED BY
81	02	CUSTOMER
		BMC 3/7/2012

SITE PRO 1
 A valmont COMPANY
 Engineering Support Team:
 1-888-753-7446
 Locations:
 New York, NY
 Atlanta, GA
 Los Angeles, CA
 Plymouth, IN
 Salem, OR
 Dallas, TX

PART NO.	SEE PART NO. "A"	PAGE
DWG. NO.	TPF103XX	1 OF 1