

TRAP3: TrapBox™ Snap-In Box



Features:

- Attaches to angle adapters, tower standoffs, etc. with 3/8" hardware (not included)
- Accepts hose clamps or 1/2" banding to attach directly to round members
- Three 3/4" mounting holes; maximum load is six 1-5/8" cables
- Not for use with Universal Snap-In Hangers
- When used with 1-1/4" or 1-5/8" MonoBloc Stackable Snap-Ins the center hole cannot be used

Construction:

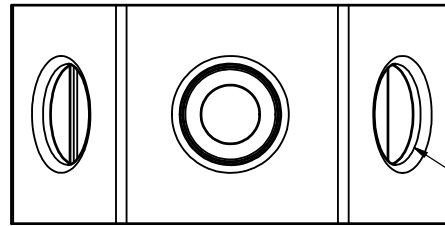
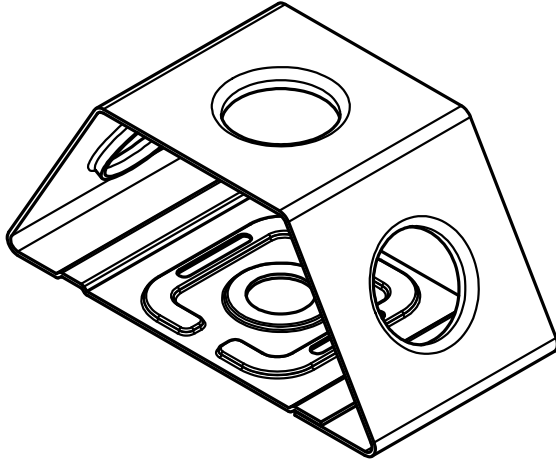
- Constructed from high grade 304 Stainless Steel for maximum corrosion protection

Related Products:

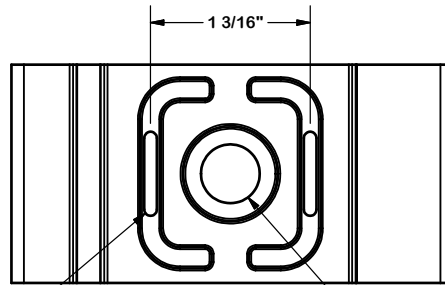
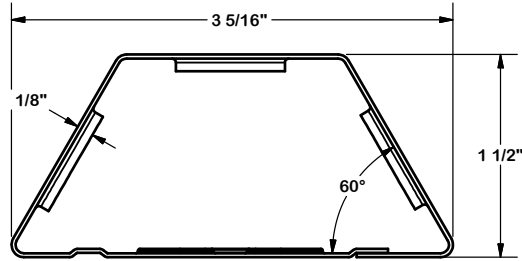
- Stackable Snap-In Hangers, MonoBloc Stackable Snap-In Hangers

Part #	Size	U of M	Weight
TRAP3	3-1/4" x 1-1/2" x 1-1/2"	10 pack	1.1 lb

TRAP3: TrapBox™



3/4" HOLE
TYP. 3 PLACES



1/8" X 5/8" SLOT
FOR 1/2" BANDING

7/16" DIA. HOLE
(BOTTOM ONLY)