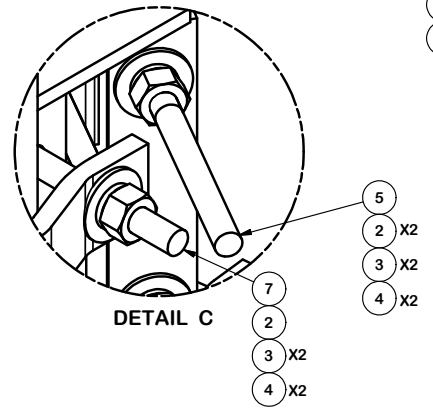
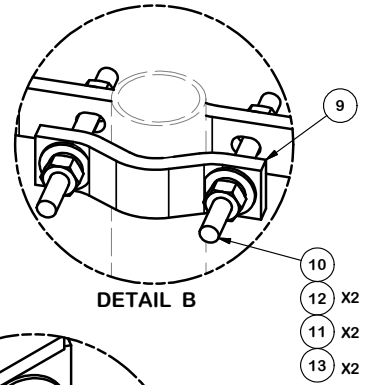
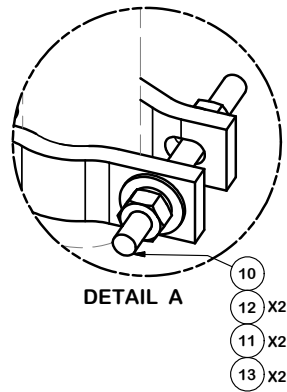


PARTS LIST						
ITEM	QTY	PART NO.	PART DESCRIPTION	LENGTH	UNIT WT.	NET WT.
1	3	X-UGLM	MINI RING MOUNT WELDMENT		21.67	65.00
2	24	G58FW	5/8" HDG USS FLATWASHER		0.07	1.69
3	36	G58LW	5/8" HDG LOCKWASHER		0.03	0.94
4	36	G58NUT	5/8" HDG HEAVY 2H HEX NUT		0.13	4.68
5	6	G58R-24	5/8" x 24" THREADED ROD (HDG.)		0.35	2.11
5	6	G58R-14	5/8" x 14" THREADED ROD (HDG.)		0.35	2.11
6	6	DCP	5-3/4" CLAMP HALF, 1/2" THK.		2.42	14.52
7	12	G58R-6	5/8" x 6" THREADED ROD (HDG.)		0.35	4.22
8	6	X-DAC	DOUBLE ANTENNA MOUNT		5.36	32.16
9	18	SCP	4-1/16" CLAMP HALF, 1/2" THK.	6 11/32 in	1.25	22.51
10	36	G12R-6	1/2" x 6" THREADED ROD (HDG.)		0.35	12.65
11	72	G12LW	1/2" HDG LOCKWASHER		0.01	1.00
12	72	G12FW	1/2" HDG USS FLATWASHER		0.03	2.45
13	72	G12NUT	1/2" HDG HEAVY 2H HEX NUT		0.07	5.16
					TOTAL WT. #	171.20



**TOLERANCE NOTES**  
 TOLERANCES ON DIMENSIONS, UNLESS OTHERWISE NOTED ARE:  
 SAWED, SHEARED AND GAS CUT EDGES ( $\pm 0.030"$ )  
 DRILLED AND GAS CUT HOLES ( $\pm 0.030"$ ) - NO CONING OF HOLES  
 LASER CUT EDGES AND HOLES ( $\pm 0.010"$ ) - NO CONING OF HOLES  
 BENDS ARE  $\pm 1/2$  DEGREE  
 ALL OTHER MACHINING ( $\pm 0.030"$ )  
 ALL OTHER ASSEMBLY ( $\pm 0.060"$ )

PROPRIETARY NOTE:  
 THE DATA AND TECHNIQUES CONTAINED IN THIS DRAWING ARE PROPRIETARY INFORMATION OF VALMONT INDUSTRIES AND CONSIDERED A TRADE SECRET. ANY USE OR DISCLOSURE WITHOUT THE CONSENT OF VALMONT INDUSTRIES IS STRICTLY PROHIBITED.

DESCRIPTION	
LIGHTWEIGHT RING MOUNT AND DOUBLE ANTENNA CLAMP	
CPD NO.	DRAWN BY CEK 2/1/2013
CLASS	ENG. APPROVAL
81	BMC 2/4/2013
SUB	CHECKED BY
02	CUSTOMER
DRAWING USAGE	
CUSTOMER	

 <b>A valmont COMPANY</b>	Locations: New York, NY Atlanta, GA Los Angeles, CA Plymouth, IN Salem, OR Dallas, TX
	Engineering Support Team: 1-888-753-7446
PART NO.	UGLM-DAC
DWG. NO.	UGLM-DAC