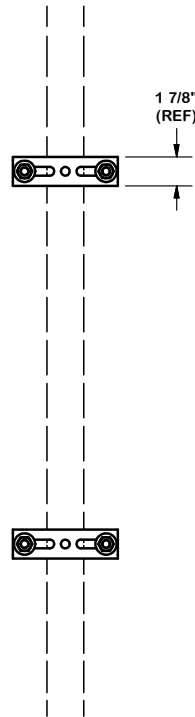
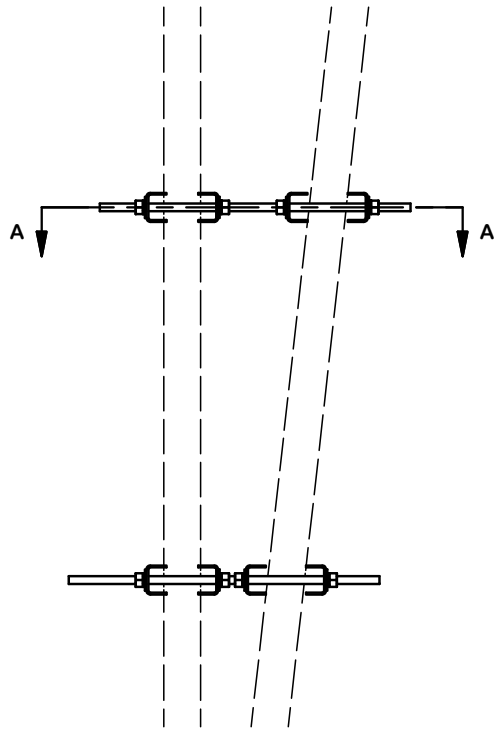
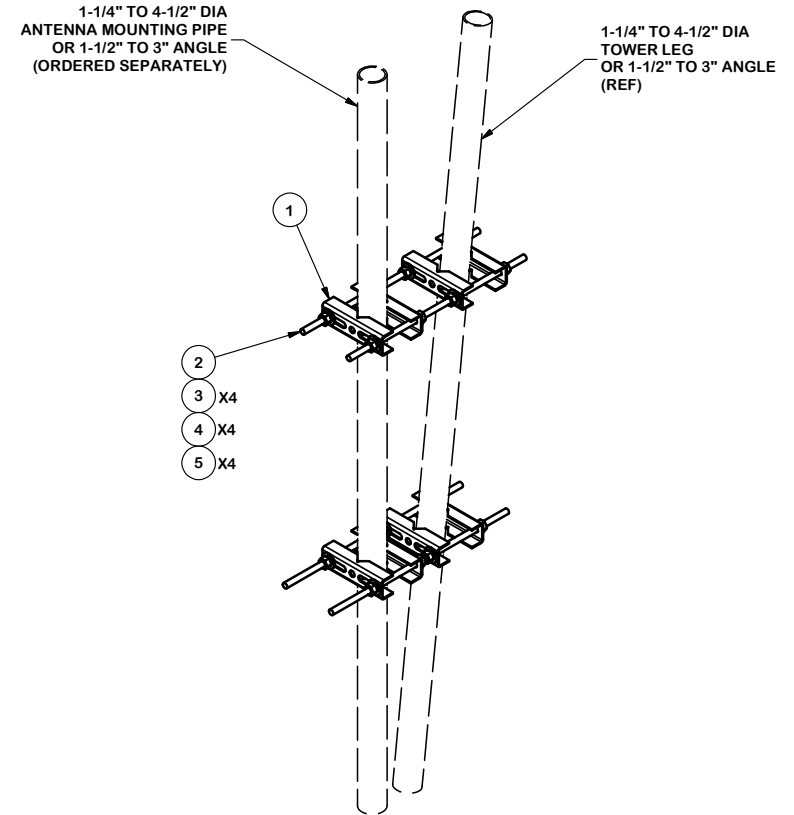


SECTION A-A



PARTS LIST						
ITEM	QTY	PART NO.	PART DESCRIPTION	LENGTH	UNIT WT.	NET WT.
1	8	X-UPC1	SMALL PIPE TO PIPE BRACKET		0.85	6.79
2	4	G12R-20	1/2" x 20" THREADED ROD (HDG.)	20 in	3.23	12.91
3	16	G12NUT	1/2" HDG HEAVY 2H HEX NUT		0.07	1.14
4	16	G12LW	1/2" HDG LOCKWASHER		0.01	0.22
5	16	G12FW	1/2" HDG USS FLATWASHER		0.03	0.54
TOTAL WT. #						13.45



TOLERANCE NOTES

TOLERANCES ON DIMENSIONS, UNLESS OTHERWISE NOTED ARE:
 SAWED, SHEARED AND GAS CUT EDGES ($\pm 0.030"$)
 DRILLED AND GAS CUT HOLES ($\pm 0.030"$) - NO CONING OF HOLES
 LASER CUT EDGES AND HOLES ($\pm 0.010"$) - NO CONING OF HOLES
 BENDS ARE $\pm 1/2$ DEGREE
 ALL OTHER MACHINING ($\pm 0.030"$)
 ALL OTHER ASSEMBLY ($\pm 0.060"$)

PROPRIETARY NOTE:
 THE DATA AND TECHNIQUES CONTAINED IN THIS DRAWING ARE PROPRIETARY INFORMATION OF VALMONT INDUSTRIES AND CONSIDERED A TRADE SECRET. ANY USE OR DISCLOSURE WITHOUT THE CONSENT OF VALMONT INDUSTRIES IS STRICTLY PROHIBITED.

DESCRIPTION
UNIVERSAL PIPE-TO-PIPE CLAMP SET FOR SMALL PIPES (1-1/4" TO 4-1/2")



Engineering Support Team:
 1-888-753-7446

Locations:
 New York, NY
 Atlanta, GA
 Los Angeles, CA
 Plymouth, IN
 Salem, OR
 Dallas, TX

A	REDRAWN IN INV. UPDATED VIEWS & TABLE	KC8	8/20/2012
REV	DESCRIPTION OF REVISIONS	CPD	BY DATE
REVISION HISTORY			

CPD NO. 4448	DRAWN BY CEK 3/13/2009	ENG. APPROVAL
CLASS 81	SUB 01	DRAWING USAGE CUSTOMER
CHECKED BY CEK 2/18/2013		

PART NO. UPC1	1 OF 1
DWG. NO. UPC1	