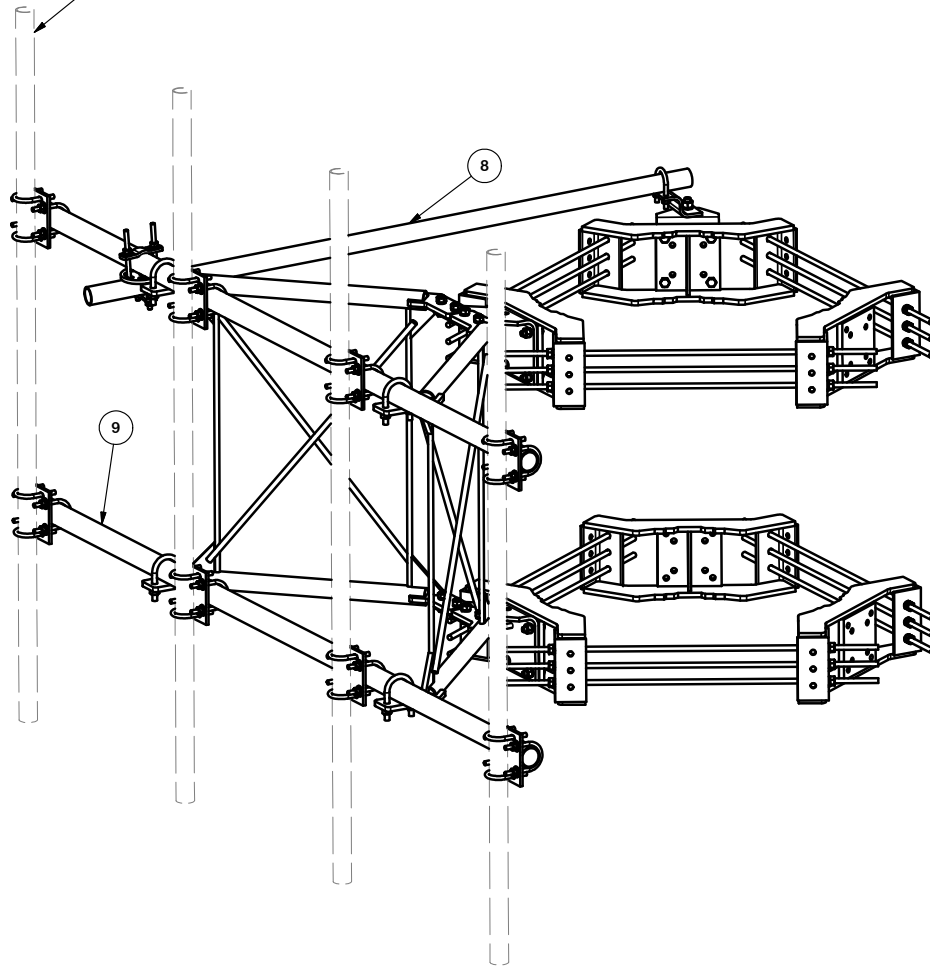


2-3/8" OR 2-7/8" ANTENNA MOUNTING PIPES  
(ORDERED SEPARATELY)



PARTS LIST

ITEM	QTY	PART NO.	PART DESCRIPTION	LENGTH	UNIT WT.	NET WT.
1	6	X-LWRM	RING MOUNT WELDMENT		68.81	412.85
2	2	X-RMBPTC	RING MOUNT BENT PLATE TOP CONNECTION	13 in	14.80	29.61
3	1	X-RMBPBC	RING MOUNT BENT PLATE BOTTOM CONNECTION	12 in	14.80	14.80
4	2	X-VFAPL3	VFA-HD PIVOT PLATE	24 in	9.69	19.38
5	2	X-VFAW	SUPPORT ARM		66.80	133.59
6	1	X-TBBB	TIE BACK BENT BRACKET	6 19/32 in	3.95	3.95
7	8	SCX2	CROSSOVER PLATE	7 in	4.80	38.37
8	1	P284	2-3/8" X 84" SCH 40 GALVANIZED PIPE	84 in	26.91	26.91
9	2	P30126	2-7/8" O.D. X 126" SCH. 40 PIPE	126 in	76.94	153.87
10	1	X-127594	FLAT DISK CLAMP PLATE 4" CENTERS (GALV.)		2.48	2.48
11	2	X-100064	CLAMP (4" V-CLAMP) GALVANIZED		0.91	1.83
12	2	A34212	3/4" x 2-1/2" UNC HEX BOLT (A325)	2 1/2 in	0.48	0.96
13	1	A34214	3/4"-10 X 2-1/4" A325 BOLT	2 1/4 in	0.47	0.47
14	3	G34LW	3/4" HDG LOCKWASHER		0.04	0.13
15	3	G34NUT	3/4" HDG HEAVY 2H HEX NUT		0.21	0.64
16	18	G58R-48	5/8" x 48" THREADED ROD (HDG.)	48 in	0.40	7.18
17	4	X-UB5300	5/8" X 3" X 5-1/4" X 2-1/2" U-BOLT (HDG.)		1.15	4.60
18	12	A582112	5/8" x 2-1/2" HDG A325 HEX BOLT	2 1/2 in	0.33	4.01
19	8	A582114	5/8" x 2-1/4" HDG A325 HEX BOLT	2 1/4 in	0.31	2.50
20	64	G58LW	5/8" HDG LOCKWASHER		0.03	1.67
21	64	G58NUT	5/8" HDG HEAVY 2H HEX NUT		0.13	8.31
22	32	X-UB1300	1/2" X 3" X 5" X 2" GALV U-BOLT		0.74	23.64
23	2	G12065	1/2" x 6-1/2" HDG HEX BOLT GR5 FULL THREAD	6 1/2 in	0.41	0.82
24	2	G1204	1/2" x 4" HDG HEX BOLT GR5 FULL THREAD	4 in	0.27	0.54
25	17	X-UB1212	1/2" X 2-1/2" X 4-1/2" X 2" U-BOLT (HDG.)		0.26	4.37
26	68	G12FW	1/2" HDG USS FLATWASHER	3/32 in	0.03	2.32
27	70	G12LW	1/2" HDG LOCKWASHER	1/8 in	0.01	0.97
28	70	G12NUT	1/2" HDG HEAVY 2H HEX NUT		0.07	5.01
					TOTAL WT. #	980.14

ANT 16002

TOLERANCE NOTES

TOLERANCES ON DIMENSIONS, UNLESS OTHERWISE NOTED ARE:  
 SAWED, SHEARED AND GAS CUT EDGES ( $\pm 0.030"$ )  
 DRILLED AND GAS CUT HOLES ( $\pm 0.030"$ ) - NO CONING OF HOLES  
 LASER CUT EDGES AND HOLES ( $\pm 0.010"$ ) - NO CONING OF HOLES  
 BENDS ARE  $\pm 1/2$  DEGREE  
 ALL OTHER MACHINING ( $\pm 0.030"$ )  
 ALL OTHER ASSEMBLY ( $\pm 0.060"$ )

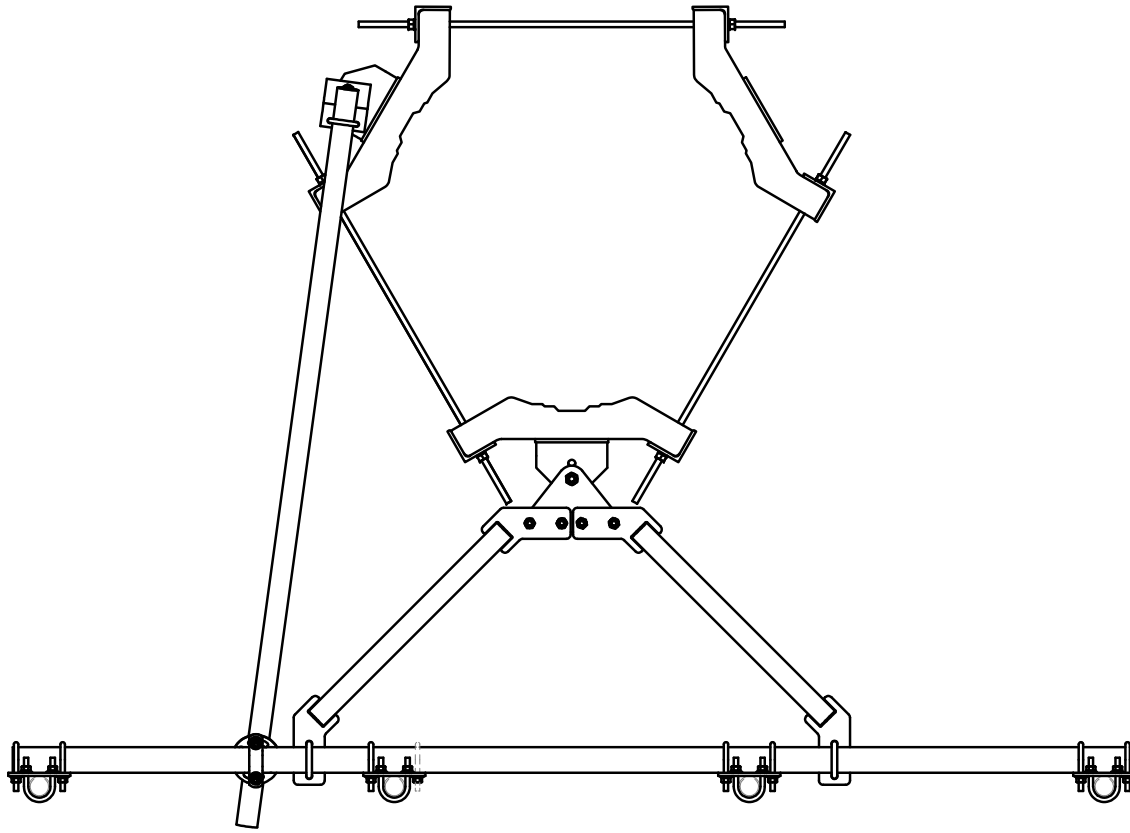
PROPRIETARY NOTE:  
 THE DATA AND TECHNIQUES CONTAINED IN THIS DRAWING ARE PROPRIETARY INFORMATION OF VALMONT INDUSTRIES AND CONSIDERED A TRADE SECRET. ANY USE OR DISCLOSURE WITHOUT THE CONSENT OF VALMONT INDUSTRIES IS STRICTLY PROHIBITED.

DESCRIPTION  
 ONE SECTOR HEAVY 10 FRAME  
 AND MONOPOLE ATTACHMENT HARDWARE  
 NO MOUNTING PIPES

**SITE PRO 1**  
 A valmont COMPANY  
 Engineering Support Team:  
 1-888-753-7446  
 Locations:  
 New York, NY  
 Atlanta, GA  
 Los Angeles, CA  
 Plymouth, IN  
 Salem, OR  
 Dallas, TX

CPD NO.	DRAWN BY	ENG. APPROVAL
	CEK 9/15/2016	
CLASS	DRAWING USAGE	CHECKED BY
81	CUSTOMER	BMC 10/17/2016

PART NO.	VFA10-HD1L4NP
DWG. NO.	VFA10-HD1L4NP



# ANT 16002

### TOLERANCE NOTES

**TOLERANCES ON DIMENSIONS, UNLESS OTHERWISE NOTED ARE:**  
**SAWED, SHEARED AND GAS CUT EDGES ( $\pm 0.030"$ )**  
**DRILLED AND GAS CUT HOLES ( $\pm 0.030"$ ) - NO CONING OF HOLES**  
**LASER CUT EDGES AND HOLES ( $\pm 0.010"$ ) - NO CONING OF HOLES**  
**BENDS ARE  $\pm 1/2$  DEGREE**  
**ALL OTHER MACHINING ( $\pm 0.030"$ )**  
**ALL OTHER ASSEMBLY ( $\pm 0.060"$ )**

PROPRIETARY NOTE:  
 THE DATA AND TECHNIQUES CONTAINED IN THIS DRAWING ARE PROPRIETARY INFORMATION OF VALMONT INDUSTRIES AND CONSIDERED A TRADE SECRET. ANY USE OR DISCLOSURE WITHOUT THE CONSENT OF VALMONT INDUSTRIES IS STRICTLY PROHIBITED.

DESCRIPTION  
**ONE SECTOR HEAVY 10 FRAME  
 AND MONOPOLE ATTACHMENT HARDWARE  
 NO MOUNTING PIPES**

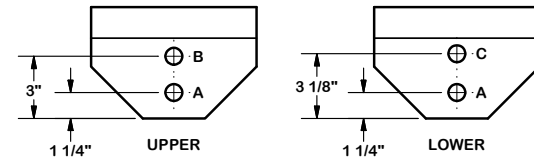
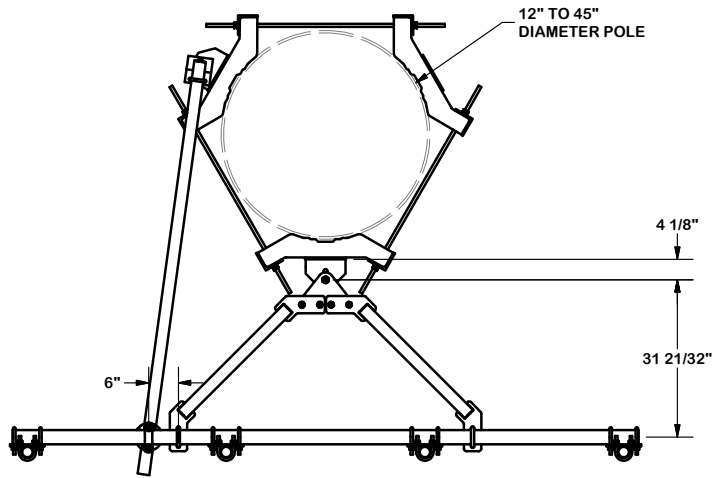
CPD NO.	DRAWN BY <b>CEK 9/15/2016</b>	ENG. APPROVAL
CLASS <b>81</b>	SUB <b>02</b>	DRAWING USAGE <b>CUSTOMER</b>
CHECKED BY <b>BMC 10/17/2016</b>		



Engineering  
 Support Team:  
 1-888-753-7446

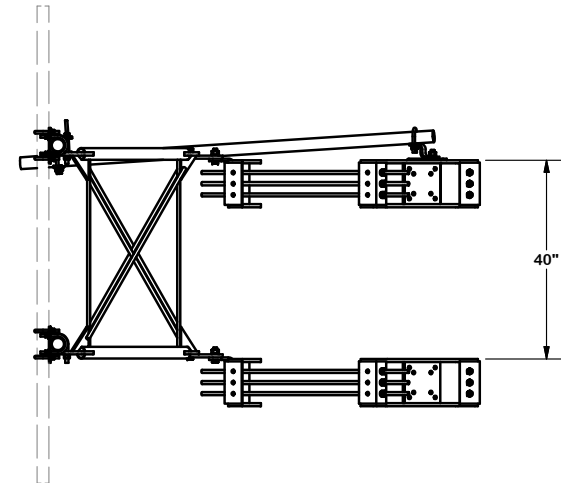
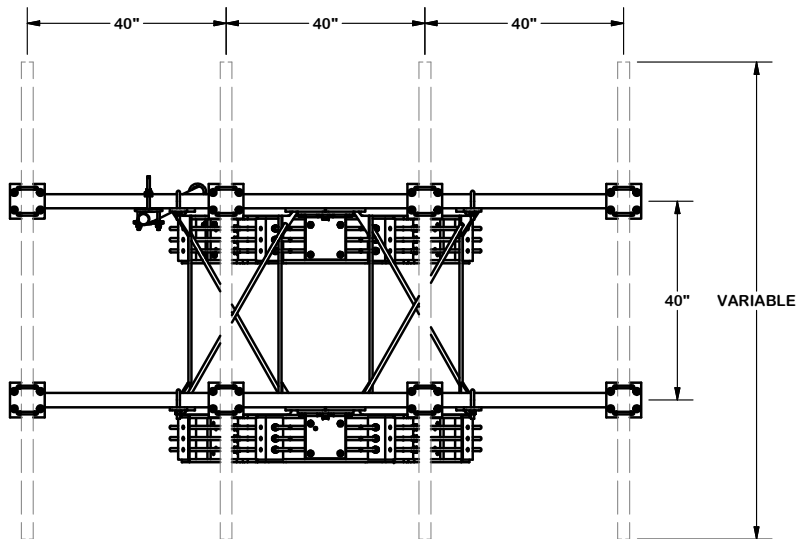
Locations:  
 New York, NY  
 Atlanta, GA  
 Los Angeles, CA  
 Plymouth, IN  
 Salem, OR  
 Dallas, TX

PART NO. <b>VFA10-HD1L4NP</b>	PAGE <b>2 OF 4</b>
DWG. NO. <b>VFA10-HD1L4NP</b>	



**NOTES:**

1. USE HOLE "A" IN UPPER AND LOWER BRACKETS FOR STRAIGHT LEGS.
2. USE HOLE "A" IN UPPER BRACKET AND HOLE "C" IN LOWER BRACKET FOR 3°.
3. USE HOLE "B" IN UPPER BRACKET AND HOLE "C" IN LOWER BRACKET FOR 0.2°.



**ANT 16002**

**TOLERANCE NOTES**

**TOLERANCES ON DIMENSIONS, UNLESS OTHERWISE NOTED ARE:  
 SAWED, SHEARED AND GAS CUT EDGES ( $\pm 0.030$ " )  
 DRILLED AND GAS CUT HOLES ( $\pm 0.030$ " ) - NO CONING OF HOLES  
 LASER CUT EDGES AND HOLES ( $\pm 0.010$ " ) - NO CONING OF HOLES  
 BENDS ARE  $\pm 1/2$  DEGREE  
 ALL OTHER MACHINING ( $\pm 0.030$ " )  
 ALL OTHER ASSEMBLY ( $\pm 0.060$ " )**

**PROPRIETARY NOTE:  
 THE DATA AND TECHNIQUES CONTAINED IN THIS DRAWING ARE PROPRIETARY INFORMATION OF VALMONT INDUSTRIES AND CONSIDERED A TRADE SECRET. ANY USE OR DISCLOSURE WITHOUT THE CONSENT OF VALMONT INDUSTRIES IS STRICTLY PROHIBITED.**

**DESCRIPTION**

**ONE SECTOR HEAVY 10 FRAME  
 AND MONOPOLE ATTACHMENT HARDWARE  
 NO MOUNTING PIPES**

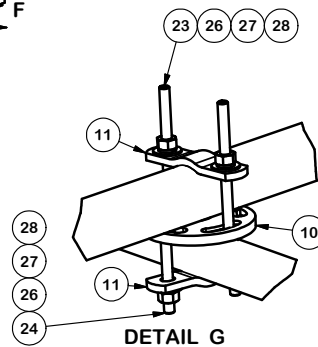
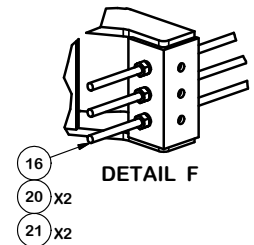
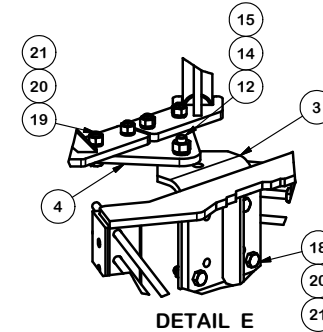
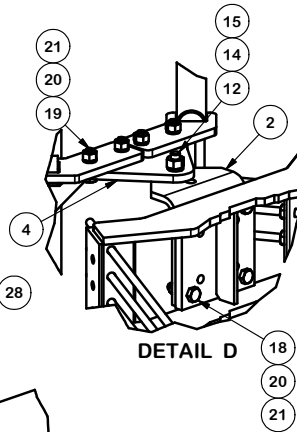
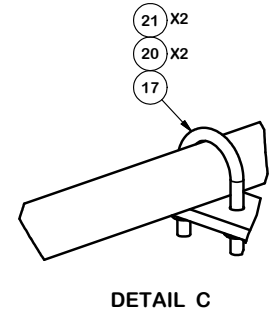
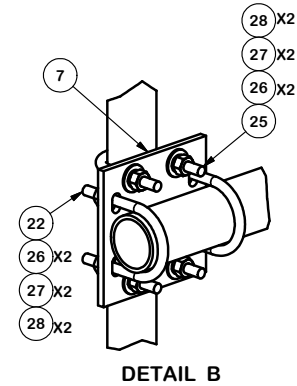
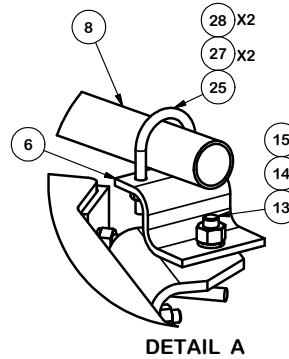
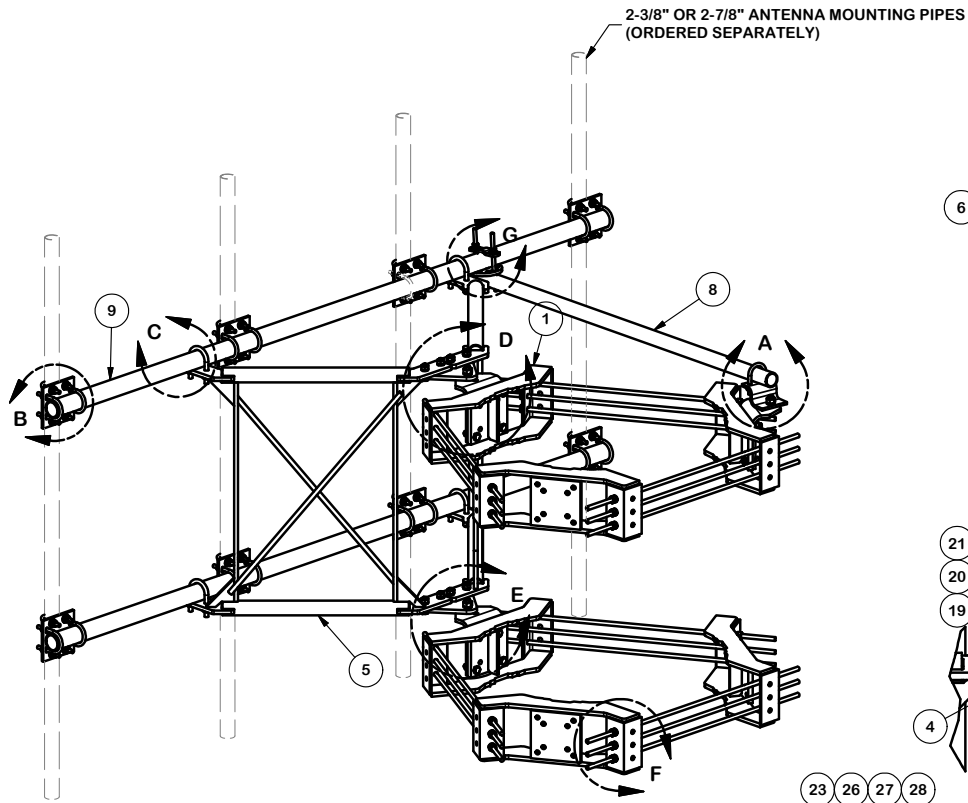
CPD NO.	DRAWN BY <b>CEK</b>	9/15/2016	ENG. APPROVAL
CLASS <b>81</b>	SUB <b>02</b>	DRAWING USAGE <b>CUSTOMER</b>	CHECKED BY <b>BMC</b>
			10/17/2016



Engineering Support Team:  
 1-888-753-7446

Locations:  
 New York, NY  
 Atlanta, GA  
 Los Angeles, CA  
 Plymouth, IN  
 Salem, OR  
 Dallas, TX

PART NO.	<b>VFA10-HD1L4NP</b>
DWG. NO.	<b>VFA10-HD1L4NP</b>



**TOLERANCE NOTES**

TOLERANCES ON DIMENSIONS, UNLESS OTHERWISE NOTED ARE:  
 SAWED, SHEARED AND GAS CUT EDGES ( $\pm 0.030"$ )  
 DRILLED AND GAS CUT HOLES ( $\pm 0.030"$ ) - NO CONING OF HOLES  
 LASER CUT EDGES AND HOLES ( $\pm 0.010"$ ) - NO CONING OF HOLES  
 BENDS ARE  $\pm 1/2$  DEGREE  
 ALL OTHER MACHINING ( $\pm 0.030"$ )  
 ALL OTHER ASSEMBLY ( $\pm 0.060"$ )

**PROPRIETARY NOTE:**  
 THE DATA AND TECHNIQUES CONTAINED IN THIS DRAWING ARE PROPRIETARY INFORMATION OF VALMONT INDUSTRIES AND CONSIDERED A TRADE SECRET. ANY USE OR DISCLOSURE WITHOUT THE CONSENT OF VALMONT INDUSTRIES IS STRICTLY PROHIBITED.

**DESCRIPTION**

ONE SECTOR HEAVY 10 FRAME  
 AND MONOPOLE ATTACHMENT HARDWARE  
 NO MOUNTING PIPES

CPD NO.	DRAWN BY CEK 9/15/2016	ENG. APPROVAL
CLASS 81	SUB 02	DRAWING USAGE CUSTOMER
	CHECKED BY BMC 10/17/2016	



Engineering  
 Support Team:  
 1-888-753-7446

Locations:  
 New York, NY  
 Atlanta, GA  
 Los Angeles, CA  
 Plymouth, IN  
 Salem, OR  
 Dallas, TX

PART NO.	VFA10-HD1L4NP
DWG. NO.	VFA10-HD1L4NP

**ANT 16002**