

PARTS LIST						
ITEM	QTY	PART NO.	PART DESCRIPTION	LENGTH	UNIT WT.	NET WT.
1	6	X-VFAW	SUPPORT ARM		71.41	428.44
2	6	P30126	2-7/8" O.D. X 126" SCH. 40 PIPE	126 in	64.63	387.76
3	3	X-MHTPHD	MULTI-HOLE TAPER PLATE WELDMENT		36.24	108.72
4	3	X-HDCAMTBW	CLAMP WELDMENT FOR BCAM-HD		33.86	101.57
5	6	X-LCBP4	BENT BACKING PLATE	13 in	19.00	114.02
6	3	X-HDCAMSS	ANGLE ADJUSTMENT WELDMENT FOR BCAM-HD		16.39	49.17
7	6	X-VFAPL4	VFA-HD PIVOT PLATE	12 in	15.88	95.30
8	3	X-HDCAMSP	POSITIONING PLATE WELDMENT FOR BCAM-HD		2.58	7.73
9	6	X-TBCA	TIE BACK CLIP ANGLE		2.01	12.03
10	3	P2126	2-3/8" X 126" (2" SCH. 40) GALVANIZED PIPE	126 in	40.75	122.26
11	6	X-SPTB	SLIDING PIPE TIE BACK PLATE	5 1/2 in	5.87	35.23
12	24	SCX2	CROSSOVER PLATE	7 in	4.80	115.11
13	6	MCP	CLAMP HALF 1/2" THICK, 11-5/8" LONG	12 1/16 in	3.59	21.56
14	12	DCP	1/2" THICK, 5-3/4" CENTER TO CENTER CLAMP HALF	8 1/8 in	2.36	28.34
15	12	A34212	3/4" x 2-1/2" UNC HEX BOLT (A325)	2 1/2 in	0.48	5.75
16	12	G34FW	3/4" HDG USS FLATWASHER		0.06	0.71
17	12	G34LW	3/4" HDG LOCKWASHER		0.04	0.51
18	12	G34NUT	3/4" HDG HEAVY 2H HEX NUT		0.21	2.55
19	24	G58R-18	5/8" x 18" THREADED ROD (HDG.)		1.57	37.63
20	6	G58R-12	5/8" x 12" THREADED ROD (HDG.)		1.05	6.27
21	12	G58R-8	5/8" x 8" THREADED ROD (HDG.)		0.70	8.36
22	12	X-UB5300	5/8" X 3" X 5-1/4" X 2-1/2" U-BOLT (HDG.)		1.15	13.79
23	12	X-UB5258	5/8" X 2-5/8" X 4-1/2" X 2" U-BOLT (HDG.)		1.00	12.00
24	6	G5807	5/8" x 7" HDG HEX BOLT GR5 FULL THREAD	7 in	0.70	4.23
25	3	G5806	5/8" x 6" HDG HEX BOLT GR5 FULL THREAD	6 in	0.62	1.85
26	12	G5804	5/8" x 4" HDG HEX BOLT GR5		0.44	5.33
27	24	A582114	5/8" x 2-1/4" HDG A325 HEX BOLT	2 1/4 in	0.31	7.50
28	6	G5802	5/8" x 2" HDG HEX BOLT GR5		0.27	1.62
29	45	G58FW	5/8" HDG USS FLATWASHER	1/8 in	0.07	3.17
30	156	G58LW	5/8" HDG LOCKWASHER		0.03	4.07
31	165	G58NUT	5/8" HDG HEAVY 2H HEX NUT		0.13	21.43
32	96	X-UB1300	1/2" X 3" X 5" X 2" GALV U-BOLT		0.74	70.91
33	48	X-UB1212	1/2" X 2-1/2" X 4-1/2" X 2" U-BOLT (HDG.)		0.60	28.67
34	192	G12FW	1/2" HDG USS FLATWASHER	3/32 in	0.03	6.54
35	192	G12LW	1/2" HDG LOCKWASHER	1/8 in	0.01	2.67
36	192	G12NUT	1/2" HDG HEAVY 2H HEX NUT		0.07	13.75
					TOTAL WT. #	1886.59


ANT 15999

REV	DESCRIPTION OF REVISIONS	CPD	BY	DATE
B	UPDATED BCAM VERSION 1 TO BCAM VERSION 2		CEK	8/8/2018
A	UPDATED TIE-BACK / SECTOR FRAME LEG CONNECTIONS		CEK	12/18/2017
REVISION HISTORY				

TOLERANCE NOTES
 TOLERANCES ON DIMENSIONS, UNLESS OTHERWISE NOTED ARE:
 SAWED, SHEARED AND GAS CUT EDGES ($\pm 0.030"$)
 DRILLED AND GAS CUT HOLES ($\pm 0.030"$) - NO CONING OF HOLES
 LASER CUT EDGES AND HOLES ($\pm 0.010"$) - NO CONING OF HOLES
 BENDS ARE $\pm 1/2$ DEGREE
 ALL OTHER MACHINING ($\pm 0.030"$)
 ALL OTHER ASSEMBLY ($\pm 0.060"$)

PROPRIETARY NOTE:
 THE DATA AND TECHNIQUES CONTAINED IN THIS DRAWING ARE PROPRIETARY INFORMATION OF VALMONT INDUSTRIES AND CONSIDERED A TRADE SECRET. ANY USE OR DISCLOSURE WITHOUT THE CONSENT OF VALMONT INDUSTRIES IS STRICTLY PROHIBITED.

DESCRIPTION		
THREE SECTOR HEAVY 10 FRAME AND SELF-SUPPORT / GUYED TOWER ATTACHMENT HDW, NO MOUNTING PIPES		
CPD NO.	DRAWN BY	ENG. APPROVAL
	CEK 9/20/2016	
CLASS	DRAWING USAGE	CHECKED BY
81	CUSTOMER	BMC 12/19/2017

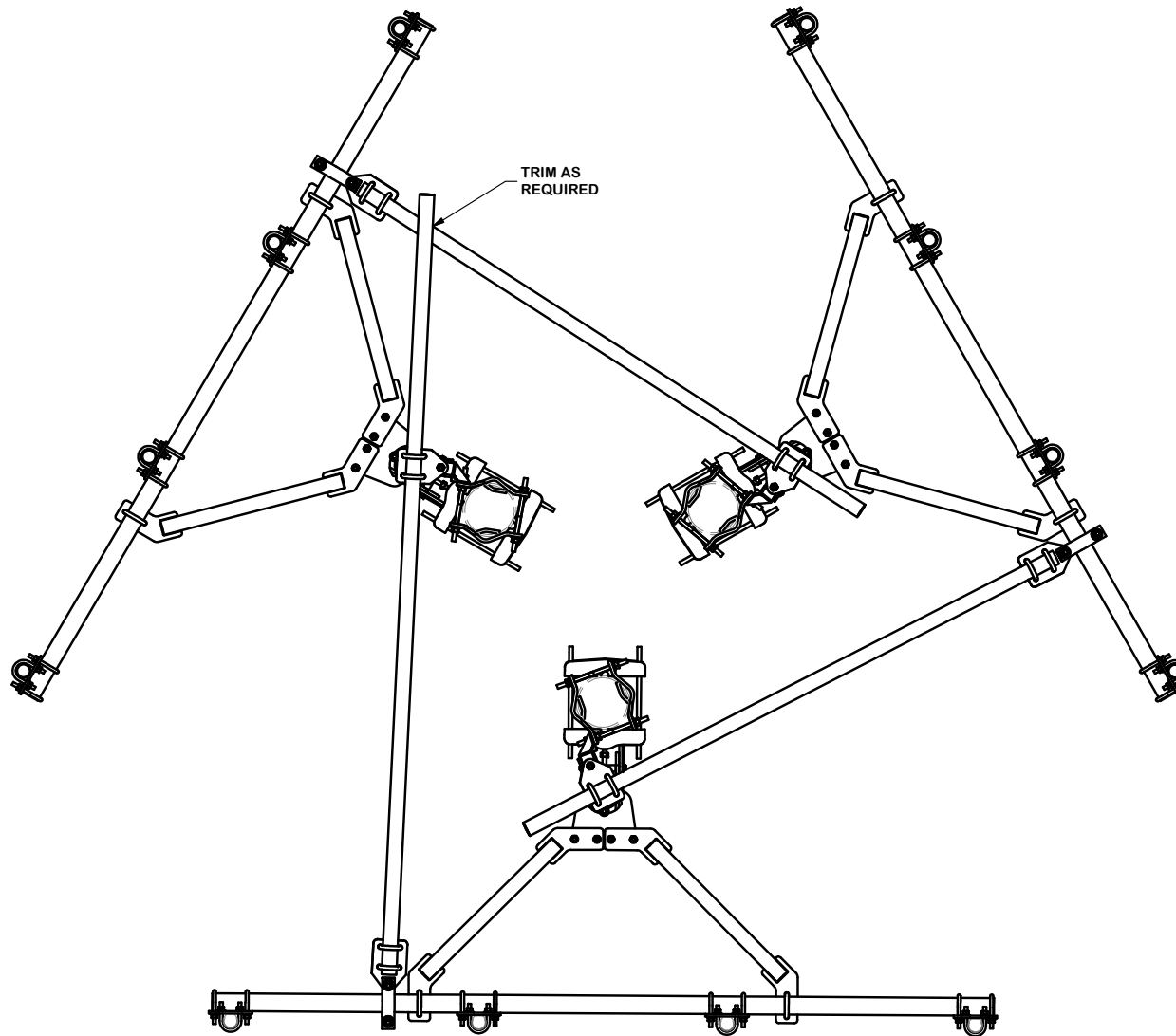


A valmont COMPANY

Locations:
 New York, NY
 Atlanta, GA
 Los Angeles, CA
 Plymouth, IN
 Salem, OR
 Dallas, TX

Engineering Support Team:
 1-888-753-7446

PART NO.	VFA10-HD3T4NP
DWG. NO.	VFA10-HD3T4NP



ANT 15999

REV	DESCRIPTION OF REVISIONS	CPD	BY	DATE
B	UPDATED BCAM VERSION 1 TO BCAM VERSION 2		CEK	8/8/2018
A	UPDATED TIE-BACK / SECTOR FRAME LEG CONNECTIONS		CEK	12/18/2017
REVISION HISTORY				

TOLERANCE NOTES

TOLERANCES ON DIMENSIONS, UNLESS OTHERWISE NOTED ARE:
 SAWED, SHEARED AND GAS CUT EDGES ($\pm 0.030"$)
 DRILLED AND GAS CUT HOLES ($\pm 0.030"$) - NO CONING OF HOLES
 LASER CUT EDGES AND HOLES ($\pm 0.010"$) - NO CONING OF HOLES
 BENDS ARE $\pm 1/2$ DEGREE
 ALL OTHER MACHINING ($\pm 0.030"$)
 ALL OTHER ASSEMBLY ($\pm 0.060"$)

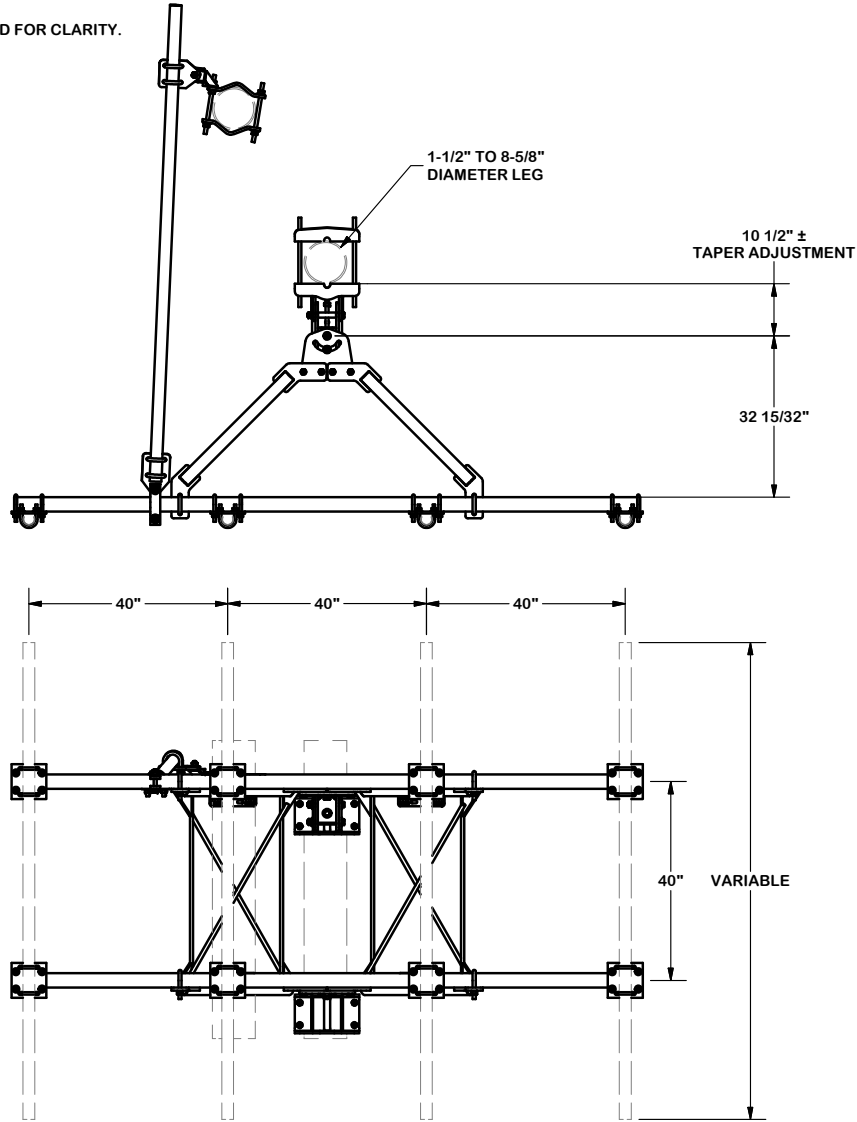
PROPRIETARY NOTE:
 THE DATA AND TECHNIQUES CONTAINED IN THIS DRAWING ARE PROPRIETARY INFORMATION OF VALMONT INDUSTRIES AND CONSIDERED A TRADE SECRET. ANY USE OR DISCLOSURE WITHOUT THE CONSENT OF VALMONT INDUSTRIES IS STRICTLY PROHIBITED.

DESCRIPTION
 THREE SECTOR HEAVY 10 FRAME AND
 SELF-SUPPORT / GUYED TOWER
 ATTACHMENT HDW, NO MOUNTING PIPES

CPD NO.	DRAWN BY	ENG. APPROVAL
	CEK 9/20/2016	
CLASS	SUB	DRAWING USAGE
81	02	CUSTOMER
	CHECKED BY	
	BMC 12/19/2017	

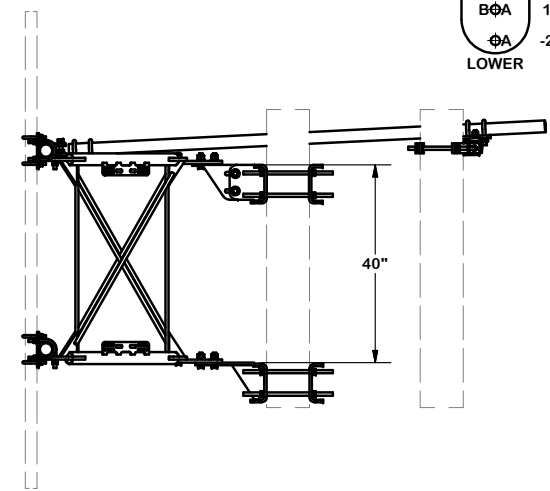
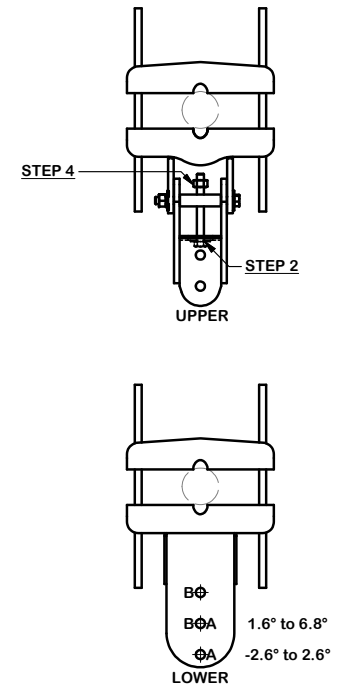
	Engineering Support Team: 1-888-753-7446	Locations: New York, NY Atlanta, GA Los Angeles, CA Plymouth, IN Salem, OR Dallas, TX	
	A valmont COMPANY		
CPD NO.	DRAWN BY	ENG. APPROVAL	PART NO.
	CEK 9/20/2016		VFA10-HD3T4NP
CLASS	SUB	DRAWING USAGE	DWG. NO.
81	02	CUSTOMER	VFA10-HD3T4NP
	CHECKED BY		
	BMC 12/19/2017		

NOTE:
OTHER SECTORS REMOVED FOR CLARITY.



ANGLE CALIBRATING PROCEDURE:

1. MEASURE TOWER TAPER AND PICK LOWER BRACKET HOLE:
 - HOLE A = -2.6° TO 2.6°
 - HOLE B = 1.6° TO 6.8°
2. USE CALIBRATING BOLT TO ADJUST FRAME TO DESIRED TAPER
3. TORQUE LOCKING BOLTS TO 100 ft.-lbs.
4. ADVANCE LOCKING NUT TO POSITIONING PLATE, THEN TIGHTEN.



ANT 15999

REV	DESCRIPTION OF REVISIONS	CPD	BY	DATE
B	UPDATED BCAM VERSION 1 TO BCAM VERSION 2		CEK	8/8/2018
A	UPDATED TIE-BACK / SECTOR FRAME LEG CONNECTIONS		CEK	12/18/2017
REVISION HISTORY				

TOLERANCE NOTES

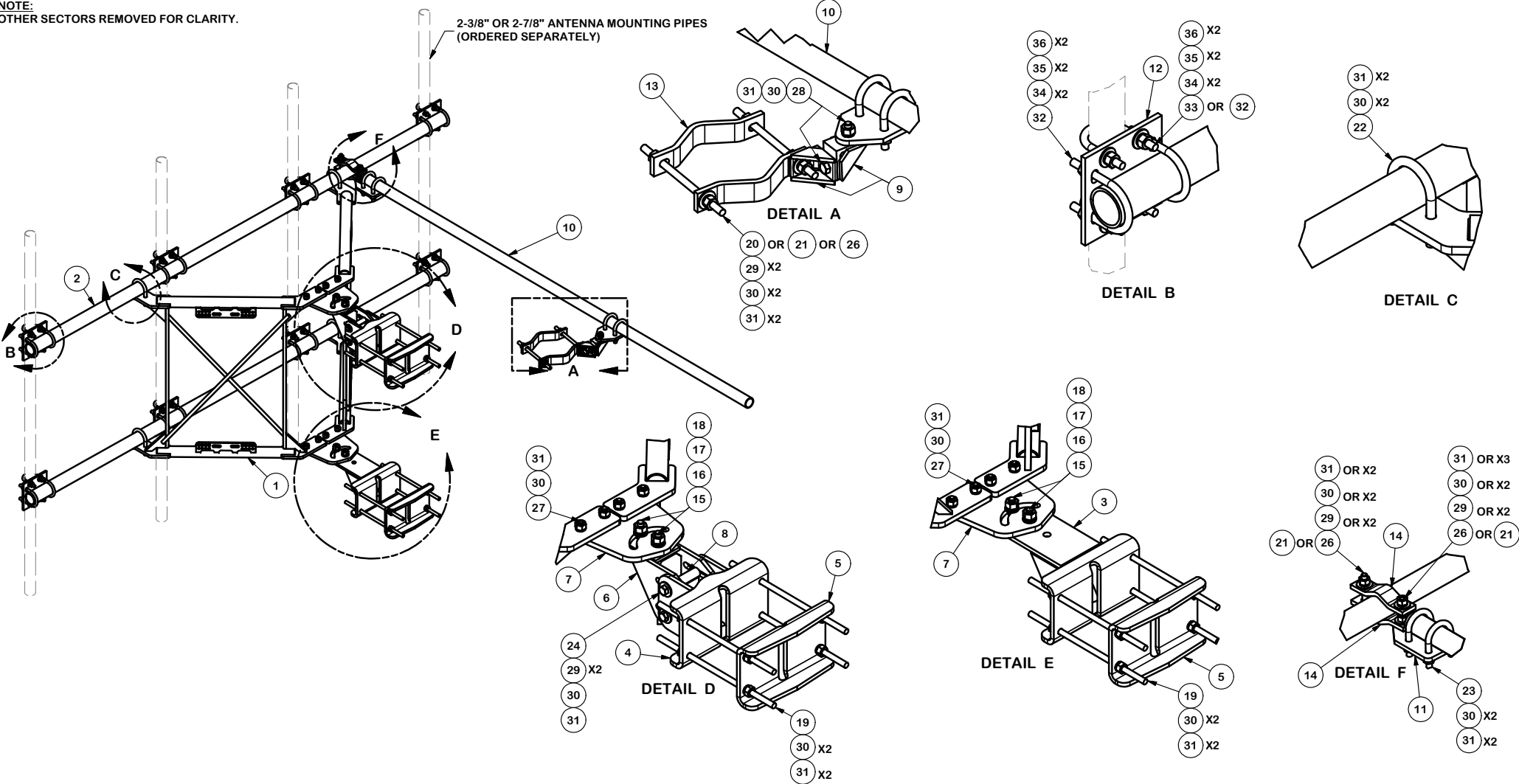
TOLERANCES ON DIMENSIONS, UNLESS OTHERWISE NOTED ARE:
 SAWED, SHEARED AND GAS CUT EDGES ($\pm 0.030"$)
 DRILLED AND GAS CUT HOLES ($\pm 0.030"$) - NO CONING OF HOLES
 LASER CUT EDGES AND HOLES ($\pm 0.010"$) - NO CONING OF HOLES
 BENDS ARE $\pm 1/2$ DEGREE
 ALL OTHER MACHINING ($\pm 0.030"$)
 ALL OTHER ASSEMBLY ($\pm 0.060"$)

PROPRIETARY NOTE:
THE DATA AND TECHNIQUES CONTAINED IN THIS DRAWING ARE PROPRIETARY INFORMATION OF VALMONT INDUSTRIES AND CONSIDERED A TRADE SECRET. ANY USE OR DISCLOSURE WITHOUT THE CONSENT OF VALMONT INDUSTRIES IS STRICTLY PROHIBITED.

DESCRIPTION		DRAWN BY		ENG. APPROVAL	
THREE SECTOR HEAVY 10 FRAME AND SELF-SUPPORT / GUYED TOWER ATTACHMENT HDW, NO MOUNTING PIPES		CEK 9/20/2016			
CPD NO.	DRAWING USAGE	CHECKED BY			
81 02	CUSTOMER	BMC 12/19/2017			

SITE PRO 1		Locations:	
A valmont COMPANY		New York, NY	
Engineering Support Team: 1-888-753-7446		Atlanta, GA	
		Los Angeles, CA	
		Plymouth, IN	
		Salem, OR	
		Dallas, TX	
PART NO.	VFA10-HD3T4NP		
DWG. NO.	VFA10-HD3T4NP		

NOTE:
OTHER SECTORS REMOVED FOR CLARITY.



ANT 15999

REV	DESCRIPTION OF REVISIONS	CPD	BY	DATE
B	UPDATED BCAM VERSION 1 TO BCAM VERSION 2		CEK	8/8/2018
A	UPDATED TIE-BACK / SECTOR FRAME LEG CONNECTIONS		CEK	12/18/2017
REVISION HISTORY				

TOLERANCE NOTES
TOLERANCES ON DIMENSIONS, UNLESS OTHERWISE NOTED ARE:
 SAWED, SHEARED AND GAS CUT EDGES ($\pm 0.030"$)
 DRILLED AND GAS CUT HOLES ($\pm 0.030"$) - NO CONING OF HOLES
 LASER CUT EDGES AND HOLES ($\pm 0.010"$) - NO CONING OF HOLES
 BENDS ARE $\pm 1/2$ DEGREE
 ALL OTHER MACHINING ($\pm 0.030"$)
 ALL OTHER ASSEMBLY ($\pm 0.060"$)

PROPRIETARY NOTE:
 THE DATA AND TECHNIQUES CONTAINED IN THIS DRAWING ARE PROPRIETARY INFORMATION OF VALMONT INDUSTRIES AND CONSIDERED A TRADE SECRET. ANY USE OR DISCLOSURE WITHOUT THE CONSENT OF VALMONT INDUSTRIES IS STRICTLY PROHIBITED.

DESCRIPTION		THREE SECTOR HEAVY 10 FRAME AND SELF-SUPPORT / GUYED TOWER ATTACHMENT HDW, NO MOUNTING PIPES	
CPD NO.	DRAWN BY	ENG. APPROVAL	
	CEK 9/20/2016		
CLASS	DRAWING USAGE	CHECKED BY	
81	02 CUSTOMER	BMC 12/19/2017	

 A valmont COMPANY	Locations: New York, NY Atlanta, GA Los Angeles, CA Plymouth, IN Salem, OR Dallas, TX		
	Engineering Support Team: 1-888-753-7446		
PART NO.	VFA10-HD3T4NP	PAGE	4 OF 4
DWG. NO.	VFA10-HD3T4NP		