

PARTS LIST						
ITEM	QTY	PART NO.	PART DESCRIPTION	LENGTH	UNIT WT.	NET WT.
1	2	X-VFASD	SUPPORT ARM FOR STANDARD DUTY V-FRAME ASSEMBLY		45.34	90.69
2	1	X-SDCAMDS	DIAGONAL SLOT WELDMENT FOR BCAM		13.57	13.57
3	1	X-MHTP	MULTI-HOLE TAPER PLATE WELDMENT		15.65	15.65
4	2	X-233792	PIVOT PLATE	11 1/16 in	9.09	18.18
5	2	X-LCBB	LEG CONNECTION BACKING BRACKET	12 in	9.41	18.82
6	1	X-SDCAMSS	STRAIGHT SLOT WELDMENT FOR BCAM		8.48	8.48
7	2	X-SPTB	SLIDING PIPE TIE BACK PLATE	5 1/2 in	5.87	11.74
8	1	X-SDCAMSP	POSITIONING PLATE WELDMENT FOR BCAM		1.43	1.43
9	2	X-TBCA	TIE BACK CLIP ANGLE		2.01	4.01
10	8	SCX1	CROSSOVER PLATE 2-3/8" X 2-3/8"	6 in	3.71	29.67
11	2	MCP	CLAMP HALF 1/2" THICK, 11-5/8" LONG	12 1/16 in	3.59	7.19
12	4	DCP	1/2" THICK, 5-3/4" CNTR TO CENTER CLAMP HALF	8 1/8 in	2.36	9.45
13	2	P2150	2-3/8" O.D. X 150" SCH 40 GALVANIZED PIPE	150 in	45.77	91.54
14	1	P2126	2-3/8" X 126" (2" SCH. 40) GALVANIZED PIPE	126 in	40.75	40.75
15	2	A34214	3/4"-10 X 2-1/4" A325 BOLT	2 1/4 in	0.47	0.95
16	2	G34LW	3/4" HDG LOCKWASHER		0.04	0.09
17	2	G34NUT	3/4" HDG HEAVY 2H HEX NUT		0.21	0.42
18	2	G58R-12	5/8" x 12" THREADED ROD (HDG.)		1.05	2.09
19	2	G58R-8	5/8" x 8" THREADED ROD (HDG.)		0.70	1.39
20	4	X-UB5258	5/8" X 2-5/8" X 4-1/2" X 2" U-BOLT (HDG.)		1.00	4.00
21	4	G5804	5/8" x 4" HDG HEX BOLT GR5		0.44	1.78
22	2	G5802	5/8" x 2" HDG HEX BOLT GR5		0.27	0.54
23	10	G58FW	5/8" HDG USS FLATWASHER	1/8 in	0.07	0.70
24	16	G58LW	5/8" HDG LOCKWASHER		0.03	0.42
25	18	G58NUT	5/8" HDG HEAVY 2H HEX NUT		0.13	2.34
26	8	G12R-15	1/2" x 15" GALV. THREADED ROD		0.84	6.69
27	36	X-UB1212	1/2" X 2-1/2" X 4-1/2" X 2" GALV. U-BOLT		0.66	23.63
28	2	G12065	1/2" x 6-1/2" HDG HEX BOLT GR5 FULL THREAD	6 1/2 in	0.41	0.82
29	1	G12045	1/2" x 4.5" HDG HEX BOLT GR5 FULL THREAD	4 1/2 in	0.30	0.30
30	8	G1202	1/2" x 2" HDG HEX BOLT GR5	2 in	0.18	1.41
31	85	G12FW	1/2" HDG USS FLATWASHER	3/32 in	0.03	2.90
32	98	G12LW	1/2" HDG LOCKWASHER	1/8 in	0.01	1.36
33	99	G12NUT	1/2" HDG HEAVY 2H HEX NUT		0.07	7.09
34	4	P2120	2-3/8" x 120" (2" SCH. 40) GALAVANIZED PIPE	120 in	36.61	146.46
					TOTAL WT. #	566.53

TOLERANCE NOTES

TOLERANCES ON DIMENSIONS, UNLESS OTHERWISE NOTED ARE:
 SAWED, SHEARED AND GAS CUT EDGES (± 0.030")
 DRILLED AND GAS CUT HOLES (± 0.030") - NO CONING OF HOLES
 LASER CUT EDGES AND HOLES (± 0.010") - NO CONING OF HOLES
 BENDS ARE ± 1/2 DEGREE
 ALL OTHER MACHINING (± 0.030")
 ALL OTHER ASSEMBLY (± 0.060")

PROPRIETARY NOTE:
 THE DATA AND TECHNIQUES CONTAINED IN THIS DRAWING ARE PROPRIETARY INFORMATION OF VALMONT INDUSTRIES AND CONSIDERED A TRADE SECRET. ANY USE OR DISCLOSURE WITHOUT THE CONSENT OF VALMONT INDUSTRIES IS STRICTLY PROHIBITED.

DESCRIPTION 12'-6" STANDARD DUTY V-FRAME ASSEMBLY W/ 1 STIFF ARMS & MOUNT PIPES

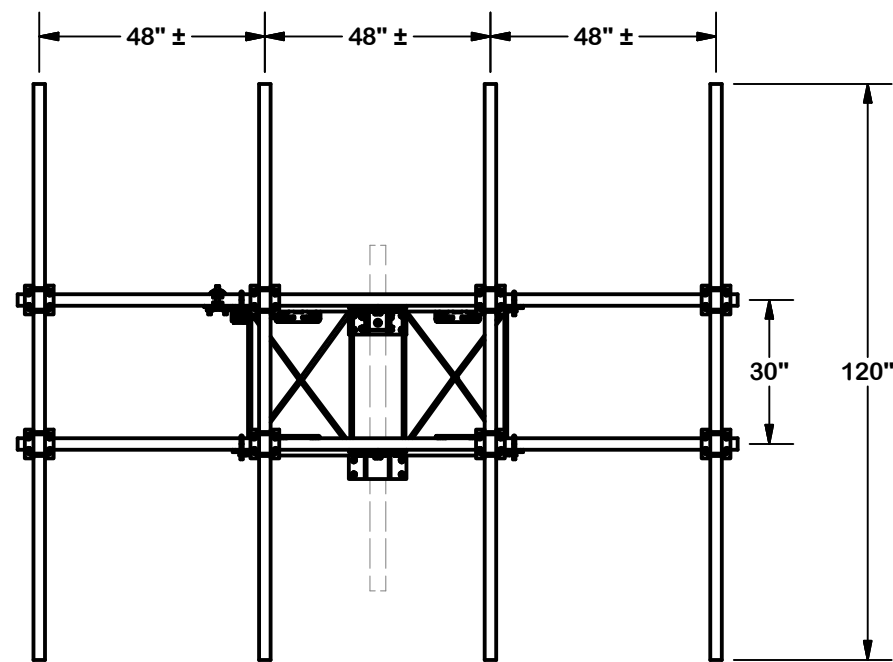
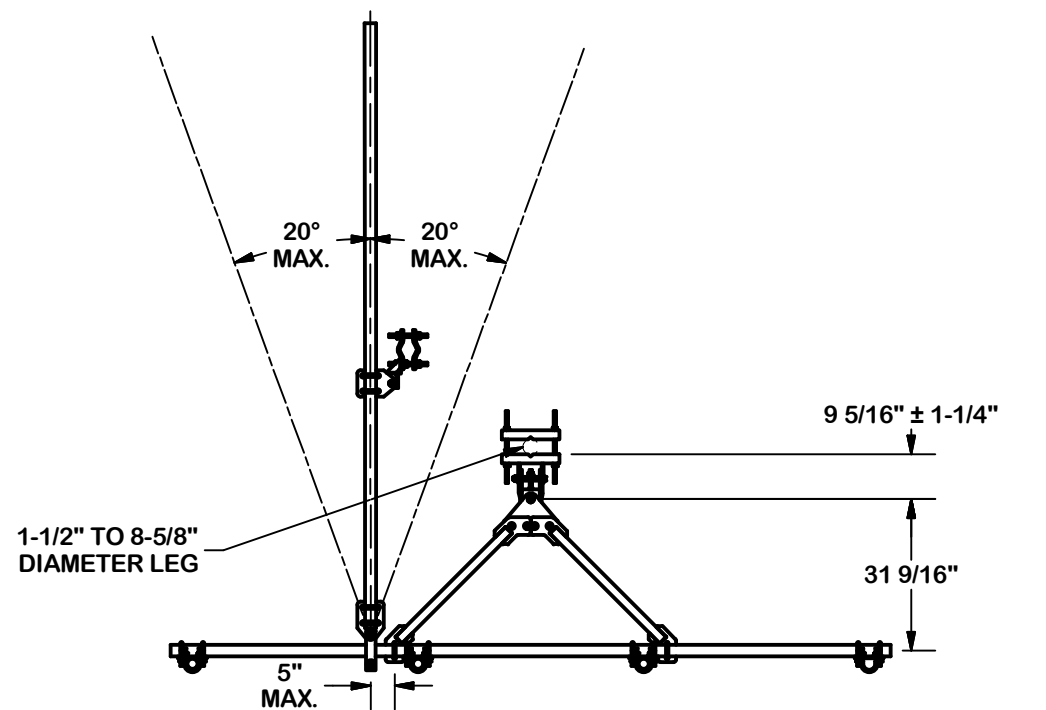
SITE PRO 1
 A valmont COMPANY
 Engineering Support Team: 1-888-753-7446
 Locations: New York, NY, Atlanta, GA, Los Angeles, CA, Plymouth, IN, Salem, OR, Dallas, TX

CPD NO. SP1 DRAWN BY CSL 6/22/2017 ENG. APPROVAL

PART NO. VFA12-H5-2120

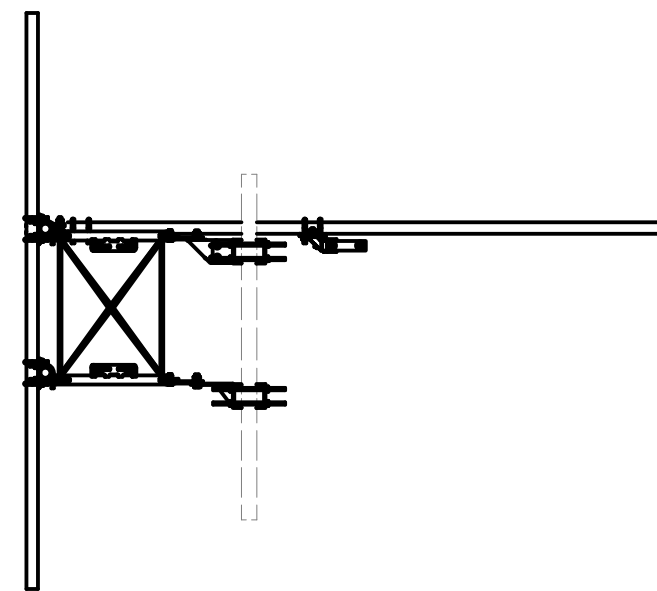
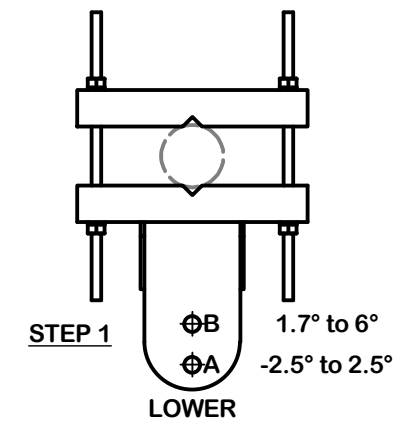
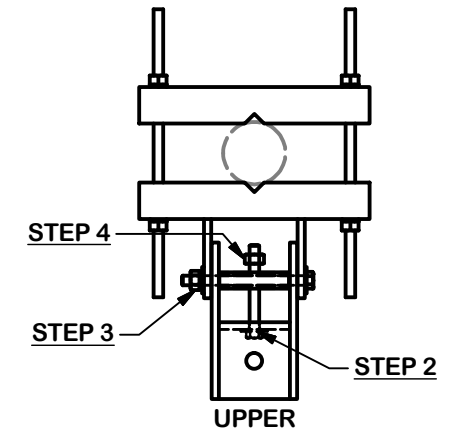
CLASS 87 SUB 02 DRAWING USAGE CUSTOMER CHECKED BY BMC 5/3/2018

DWG. NO. VFA12-H5-2120



ANGLE CALIBRATING PROCEDURE:

1. MEASURE TOWER TAPER AND PICK LOWER BRACKET HOLE:
 - HOLE A = -2.5° TO 2.5°
 - HOLE B = 1.7° TO 6°
2. USE CALIBRATING BOLT TO ADJUST FRAME TO DESIRED TAPER
3. TORQUE LOCKING BOLTS TO 75 ft.-lbs.
4. ADVANCE LOCKING NUT TO POSITIONING PLATE, THEN TIGHTEN.



TOLERANCE NOTES

TOLERANCES ON DIMENSIONS, UNLESS OTHERWISE NOTED ARE:
 SAWED, SHEARED AND GAS CUT EDGES ($\pm 0.030''$)
 DRILLED AND GAS CUT HOLES ($\pm 0.030''$) - NO CONING OF HOLES
 LASER CUT EDGES AND HOLES ($\pm 0.010''$) - NO CONING OF HOLES
 BENDS ARE $\pm 1/2$ DEGREE
 ALL OTHER MACHINING ($\pm 0.030''$)
 ALL OTHER ASSEMBLY ($\pm 0.060''$)

PROPRIETARY NOTE:
 THE DATA AND TECHNIQUES CONTAINED IN THIS DRAWING ARE PROPRIETARY INFORMATION OF VALMONT INDUSTRIES AND CONSIDERED A TRADE SECRET. ANY USE OR DISCLOSURE WITHOUT THE CONSENT OF VALMONT INDUSTRIES IS STRICTLY PROHIBITED.

DESCRIPTION 12'-6" STANDARD DUTY V-FRAME ASSEMBLY W/ 1 STIFF ARMS & MOUNT PIPES

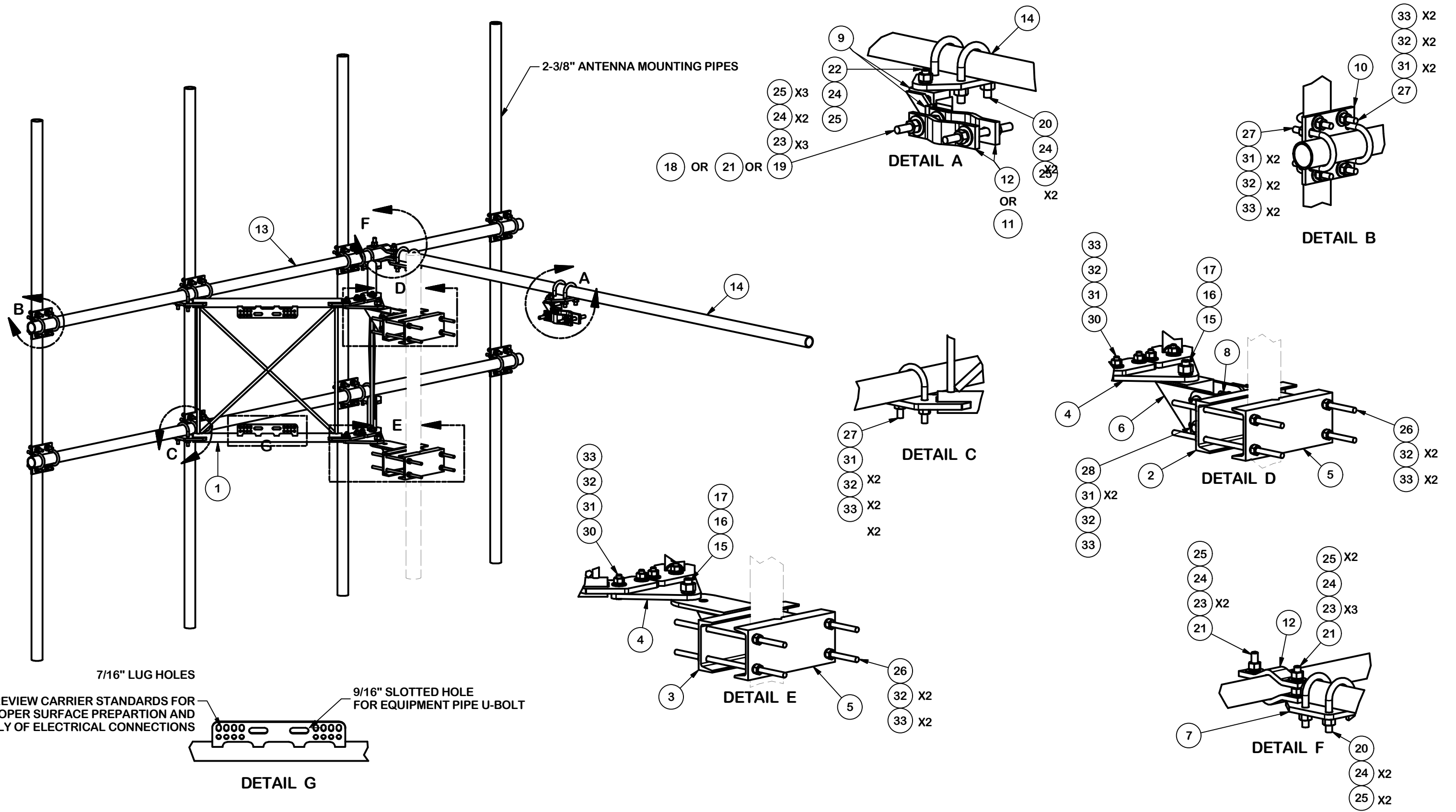
CPD NO. SP1	DRAWN BY CSL 6/22/2017	ENG. APPROVAL
CLASS 87	SUB 02	DRAWING USAGE CUSTOMER
CHECKED BY BMC 5/3/2018		

SITE PRO 1
 A valmont COMPANY

Engineering Support Team:
 1-888-753-7446

Locations:
 New York, NY
 Atlanta, GA
 Los Angeles, CA
 Plymouth, IN
 Salem, OR
 Dallas, TX

PART NO. VFA12-H5-2120	PAGE 2 OF 4
DWG. NO. VFA12-H5-2120	



TOLERANCE NOTES

TOLERANCES ON DIMENSIONS, UNLESS OTHERWISE NOTED ARE:
 SAWED, SHEARED AND GAS CUT EDGES ($\pm 0.030"$)
 DRILLED AND GAS CUT HOLES ($\pm 0.030"$) - NO CONING OF HOLES
 LASER CUT EDGES AND HOLES ($\pm 0.010"$) - NO CONING OF HOLES
 BENDS ARE $\pm 1/2$ DEGREE
 ALL OTHER MACHINING ($\pm 0.030"$)
 ALL OTHER ASSEMBLY ($\pm 0.060"$)

PROPRIETARY NOTE:
 THE DATA AND TECHNIQUES CONTAINED IN THIS DRAWING ARE PROPRIETARY INFORMATION OF VALMONT INDUSTRIES AND CONSIDERED A TRADE SECRET. ANY USE OR DISCLOSURE WITHOUT THE CONSENT OF VALMONT INDUSTRIES IS STRICTLY PROHIBITED.

DESCRIPTION 12'-6" STANDARD DUTY V-FRAME ASSEMBLY W/ 1 STIFF ARMS & MOUNT PIPES

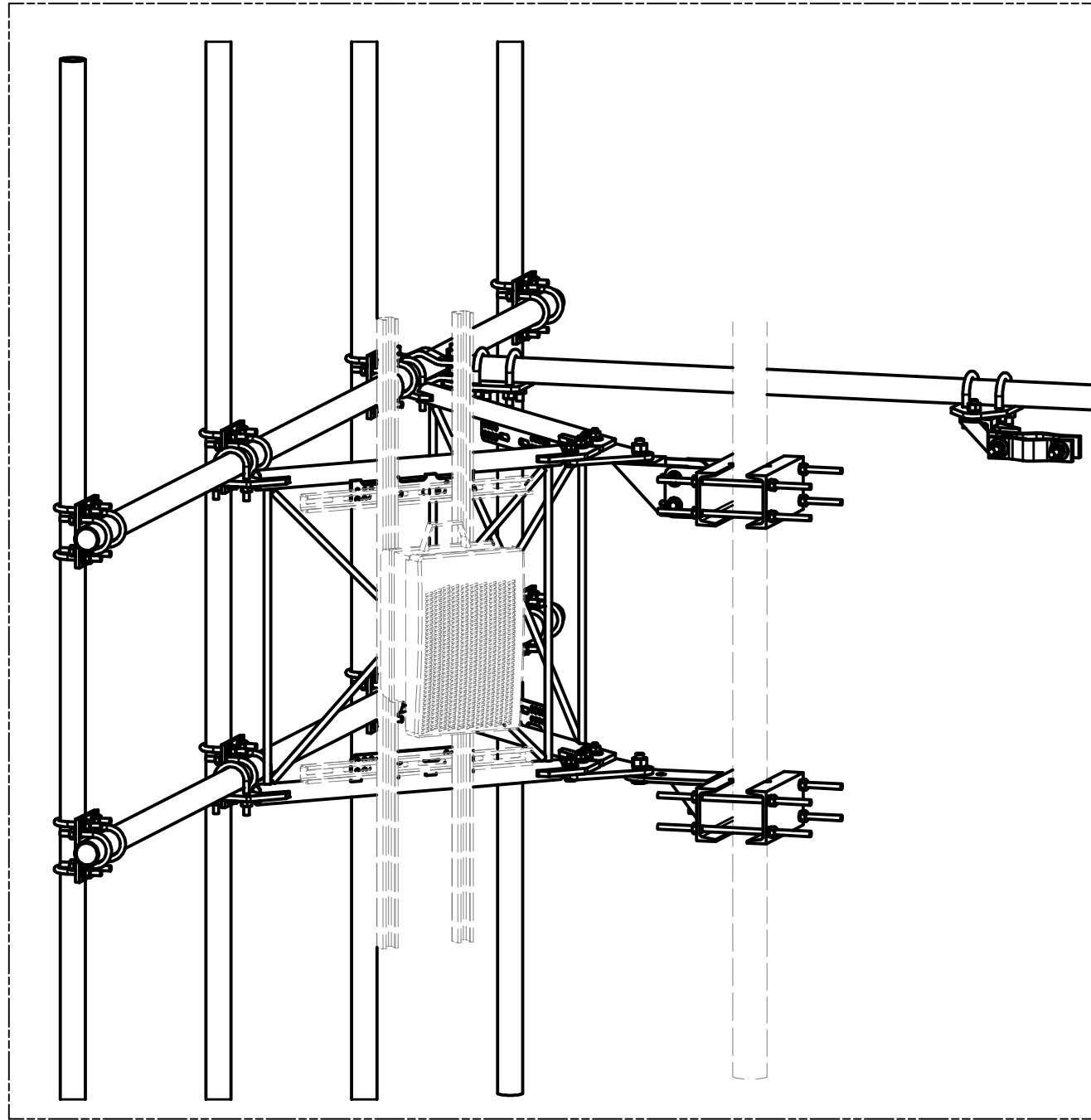
CPD NO. SP1	DRAWN BY CSL 6/22/2017	ENG. APPROVAL
CLASS 87	SUB 02	DRAWING USAGE CUSTOMER
CHECKED BY BMC 5/3/2018		

SITE PRO 1
 A valmont COMPANY

Engineering Support Team:
 1-888-753-7446

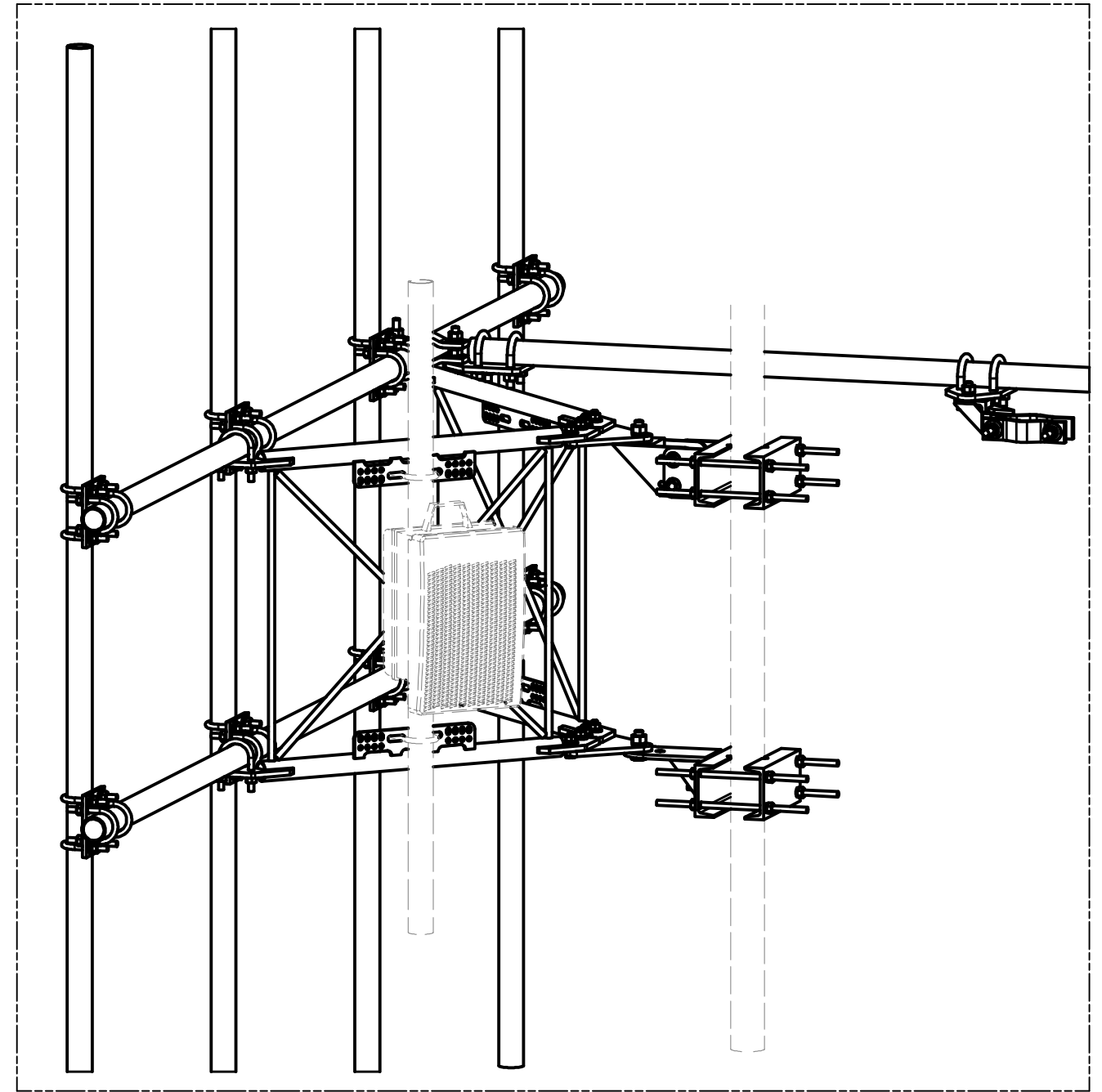
Locations:
 New York, NY
 Atlanta, GA
 Los Angeles, CA
 Plymouth, IN
 Salem, OR
 Dallas, TX

PART NO. VFA12-H5-2120	DWG. NO. VFA12-H5-2120



UNISTRUT AND HARDWARE
SOLD SEPARATELY.

REQUIRES 3/8" HARDWARE



EQUIPMENT PIPE AND HARDWARE
SOLD SEPARATELY.

REQUIRES 1/2" HARDWARE
AND 2-3/8" AND 4-1/2" O.D. PIPE

TOLERANCE NOTES

TOLERANCES ON DIMENSIONS, UNLESS OTHERWISE NOTED ARE:
 SAWED, SHEARED AND GAS CUT EDGES ($\pm 0.030"$)
 DRILLED AND GAS CUT HOLES ($\pm 0.030"$) - NO CONING OF HOLES
 LASER CUT EDGES AND HOLES ($\pm 0.010"$) - NO CONING OF HOLES
 BENDS ARE $\pm 1/2$ DEGREE
 ALL OTHER MACHINING ($\pm 0.030"$)
 ALL OTHER ASSEMBLY ($\pm 0.060"$)

PROPRIETARY NOTE:
 THE DATA AND TECHNIQUES CONTAINED IN THIS DRAWING ARE PROPRIETARY INFORMATION OF VALMONT INDUSTRIES AND CONSIDERED A TRADE SECRET. ANY USE OR DISCLOSURE WITHOUT THE CONSENT OF VALMONT INDUSTRIES IS STRICTLY PROHIBITED.

DESCRIPTION 12'-6" STANDARD DUTY
 V-FRAME ASSEMBLY
 W/ 1 STIFF ARMS &
 MOUNT PIPES

CPD NO. SP1	DRAWN BY CSL 6/22/2017	ENG. APPROVAL
CLASS 87	SUB 02	DRAWING USAGE CUSTOMER
	CHECKED BY BMC 5/3/2018	



Locations:
 New York, NY
 Atlanta, GA
 Los Angeles, CA
 Plymouth, IN
 Salem, OR
 Dallas, TX

Engineering
 Support Team:
 1-888-753-7446

PART NO. VFA12-H5-2120	PAGE 4 OF 4
DWG. NO. VFA12-H5-2120	