

PARTS LIST						
ITEM	QTY	PART NO.	PART DESCRIPTION	LENGTH	UNIT WT.	NET WT.
1	2	X-VFAW	SUPPORT ARM		71.41	142.81
2	2	X-HDPMW	HEAVY DUTY PIPE MOUNT WELDMENT		18.61	37.21
3	2	X-HDPMBP	HEAVY DUTY PIPE MOUNT BACKING PLATE	12 in	13.44	26.89
4	2	X-VFAPL3	VFA-HD PIVOT PLATE	24 in	9.69	19.38
5	1	X-LPB	LOWER PIVOT BRACKET		8.84	8.84
6	1	X-UPB	UPPER PIVOT BRACKET		8.84	8.84
7	4	X-SPTB	SLIDING PIPE TIE BACK PLATE	5 1/2 in	5.87	23.49
8	4	X-TBCA	TIE BACK CLIP ANGLE		2.01	8.02
9	8	SCX2	CROSSOVER PLATE	7 in	4.80	38.37
10	4	MCP	CLAMP HALF 1/2" THICK, 11-5/8" LONG	12 1/16 in	3.59	14.37
11	8	DCP	1/2" THICK, 5-3/4" CTR TO CENTER CLAMP HALF	8 1/8 in	2.42	19.36
13	2	P2126	2-3/8" X 126" (2" SCH. 40) GALVANIZED PIPE	126 in	40.75	81.50
12	2	P30174	2-7/8" O.D. x 174" SCH. 40 PIPE	174 in	84.20	168.39
14	6	A34212	3/4" x 2-1/2" UNC HEX BOLT (A325)	2 1/2 in	0.48	2.87
15	6	G34LW	3/4" HDG LOCKWASHER		0.04	0.26
16	6	G34NUT	3/4" HDG HEAVY 2H HEX NUT		0.21	1.27
19	8	G58R-18	5/8" x 18" THREADED ROD (HDG.)	18 in	0.40	3.19
20	4	G58R-12	5/8" x 12" THREADED ROD (HDG.)		1.05	4.18
21	8	G58R-8	5/8" x 8" THREADED ROD (HDG.)		0.70	5.58
17	4	X-UB5300	5/8" X 3" X 5-1/4" X 2-1/2" U-BOLT (HDG.)		1.15	4.60
18	8	X-UB5258	5/8" X 2-5/8" X 4-1/2" X 2" U-BOLT (HDG.)		1.00	8.00
23	8	A582114	5/8" x 2-1/4" HDG A325 HEX BOLT	2 1/4 in	0.31	2.50
22	8	G5804	5/8" x 4" HDG HEX BOLT GR5		0.44	3.55
24	4	G5802	5/8" x 2" HDG HEX BOLT GR5		0.27	1.08
25	20	G58FW	5/8" HDG USS FLATWASHER	1/8 in	0.07	1.41
26	66	G58LW	5/8" HDG LOCKWASHER		0.03	1.72
27	70	G58NUT	5/8" HDG HEAVY 2H HEX NUT		0.13	9.09
28	32	X-UB1300	1/2" X 3" X 5" X 2" GALV U-BOLT		0.74	23.64
29	16	X-UB1212	1/2" X 2-1/2" X 4-1/2" X 2" U-BOLT (HDG.)		0.63	10.00
30	64	G12FW	1/2" HDG USS FLATWASHER	3/32 in	0.03	2.18
31	64	G12LW	1/2" HDG LOCKWASHER	1/8 in	0.01	0.89
32	64	G12NUT	1/2" HDG HEAVY 2H HEX NUT		0.07	4.58
					TOTAL WT. #	700.78

TOLERANCE NOTES

TOLERANCES ON DIMENSIONS, UNLESS OTHERWISE NOTED ARE:
 SAWED, SHEARED AND GAS CUT EDGES ($\pm 0.030"$)
 DRILLED AND GAS CUT HOLES ($\pm 0.030"$) - NO CONING OF HOLES
 LASER CUT EDGES AND HOLES ($\pm 0.010"$) - NO CONING OF HOLES
 BENDS ARE $\pm 1/2$ DEGREE
 ALL OTHER MACHINING ($\pm 0.030"$)
 ALL OTHER ASSEMBLY ($\pm 0.060"$)

PROPRIETARY NOTE:
 THE DATA AND TECHNIQUES CONTAINED IN THIS DRAWING ARE PROPRIETARY INFORMATION OF VALMONT INDUSTRIES AND CONSIDERED A TRADE SECRET. ANY USE OR DISCLOSURE WITHOUT THE CONSENT OF VALMONT INDUSTRIES IS STRICTLY PROHIBITED.

DESCRIPTION
 14' 6" HEAVY DUTY
 V-FRAME ASSEMBLY
 WITH TWO STIFF ARMS



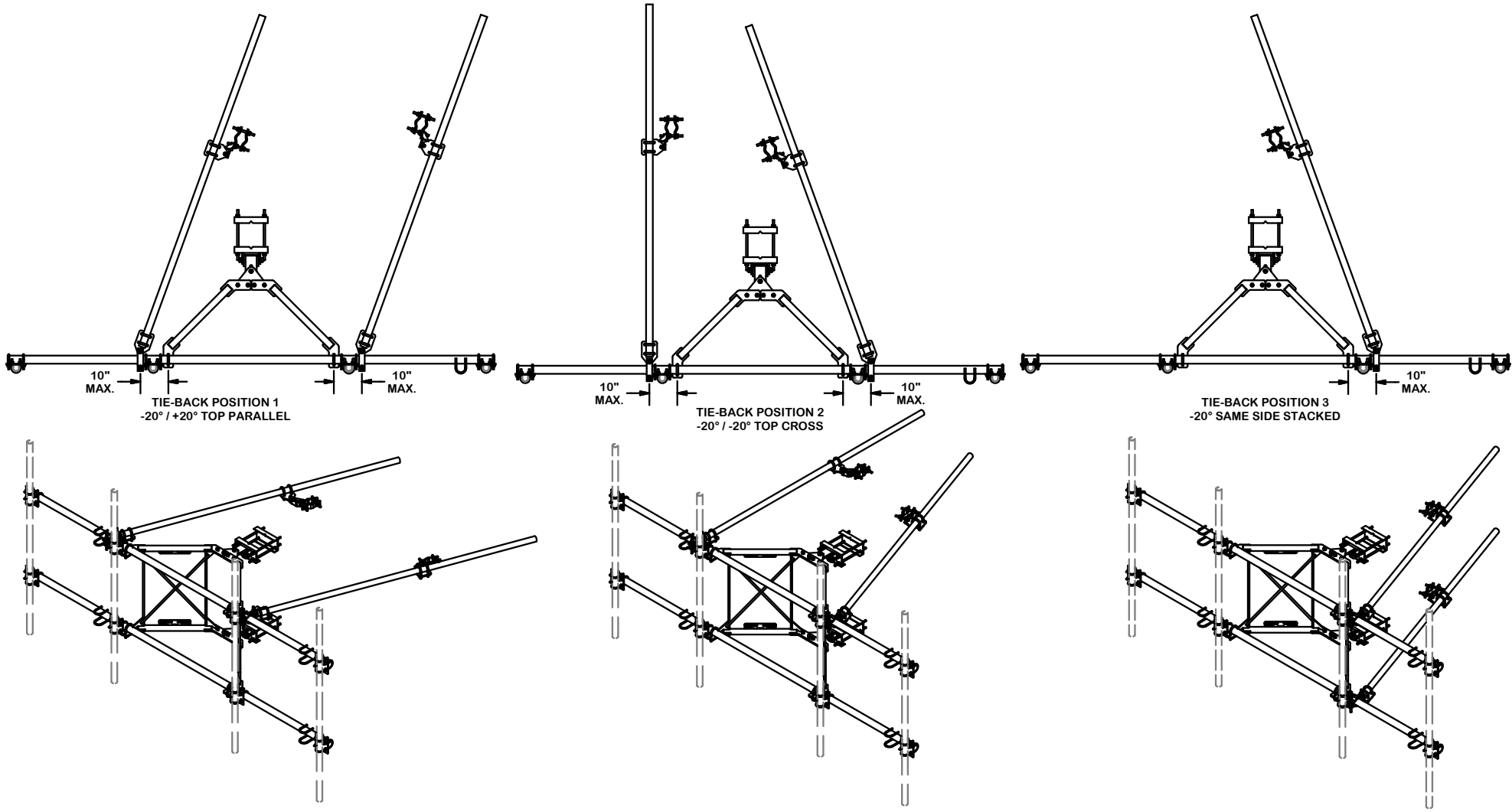
Locations:
 New York, NY
 Atlanta, GA
 Los Angeles, CA
 Plymouth, IN
 Salem, OR
 Dallas, TX
 Engineering Support Team:
 1-888-753-7446

REV	DESCRIPTION OF REVISIONS	CPD	BY	DATE
B	CHANGED TIE-BACK BACK CONNECTION		CEK	7/31/2017
A	CHANGED TIE-BACK FRONT CONNECTION		CEK	2/2/2017
REVISION HISTORY				

CPD NO.	DRAWN BY	ENG. APPROVAL
	CEK 1/25/2017	
CLASS	SUB	DRAWING USAGE
81	02	CUSTOMER
		CHECKED BY
		BMC 8/4/2017

PART NO.	VFA14-HD
DWG. NO.	VFA14-HD

TIE-BACK POSITIONS



REV	DESCRIPTION OF REVISIONS	CPD	BY	DATE
B	CHANGED TIE-BACK BACK CONNECTION		CEK	7/31/2017
A	CHANGED TIE-BACK FRONT CONNECTION		CEK	2/2/2017
REVISION HISTORY				

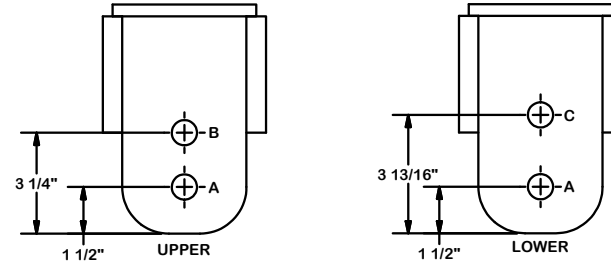
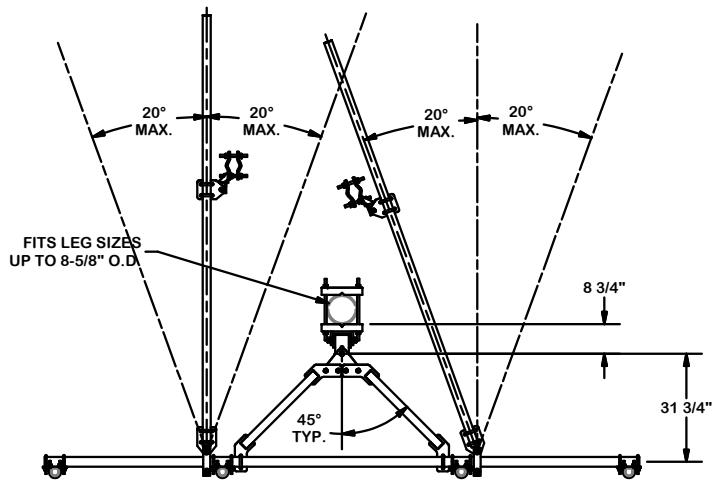
TOLERANCE NOTES

TOLERANCES ON DIMENSIONS, UNLESS OTHERWISE NOTED ARE:
 SAWED, SHEARED AND GAS CUT EDGES ($\pm 0.030"$)
 DRILLED AND GAS CUT HOLES ($\pm 0.030"$) - NO CONING OF HOLES
 LASER CUT EDGES AND HOLES ($\pm 0.010"$) - NO CONING OF HOLES
 BENDS ARE $\pm 1/2$ DEGREE
 ALL OTHER MACHINING ($\pm 0.030"$)
 ALL OTHER ASSEMBLY ($\pm 0.060"$)

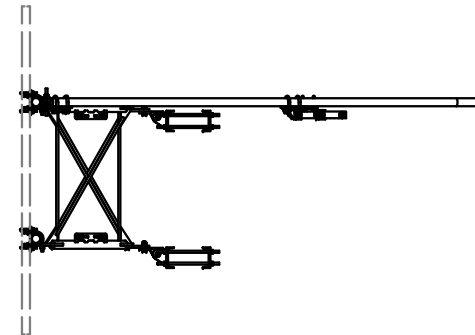
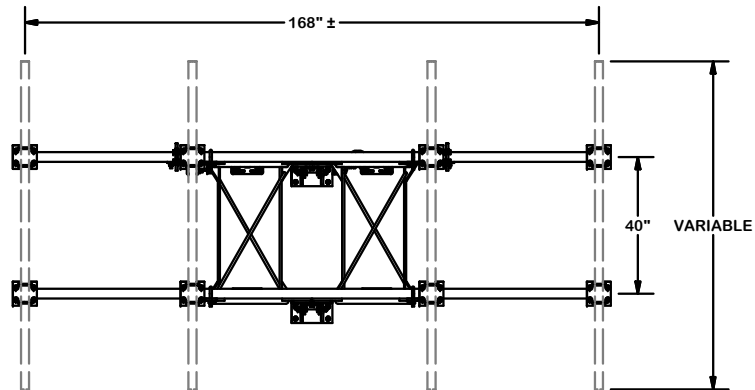
PROPRIETARY NOTE:
 THE DATA AND TECHNIQUES CONTAINED IN THIS DRAWING ARE PROPRIETARY INFORMATION OF VALMONT INDUSTRIES AND CONSIDERED A TRADE SECRET. ANY USE OR DISCLOSURE WITHOUT THE CONSENT OF VALMONT INDUSTRIES IS STRICTLY PROHIBITED.

DESCRIPTION		14' 6" HEAVY DUTY V-FRAME ASSEMBLY WITH TWO STIFF ARMS	
CPD NO.	DRAWN BY	ENG. APPROVAL	
	CEK 1/25/2017		
CLASS	SUB	DRAWING USAGE	CHECKED BY
81	02	CUSTOMER	BMC 8/4/2017

	Locations: New York, NY Atlanta, GA Los Angeles, CA Plymouth, IN Salem, OR Dallas, TX	Engineering Support Team: 1-888-753-7446
A valmont COMPANY		PART NO. VFA14-HD
		DWG. NO. VFA14-HD



- NOTES:**
1. USE HOLE "A" IN UPPER AND LOWER BRACKETS FOR STRAIGHT LEGS.
 2. USE HOLE "A" IN UPPER BRACKET AND HOLE "C" IN LOWER BRACKET FOR 2" IN 20' TAPER LEGS (3.309°)
 3. USE HOLE "B" IN UPPER BRACKET AND HOLE "C" IN LOWER BRACKET FOR 6" IN 20' TAPER LEGS. (0.827°)



REV	DESCRIPTION OF REVISIONS	CPD	BY	DATE
B	CHANGED TIE-BACK BACK CONNECTION		CEK	7/31/2017
A	CHANGED TIE-BACK FRONT CONNECTION		CEK	2/2/2017
REVISION HISTORY				

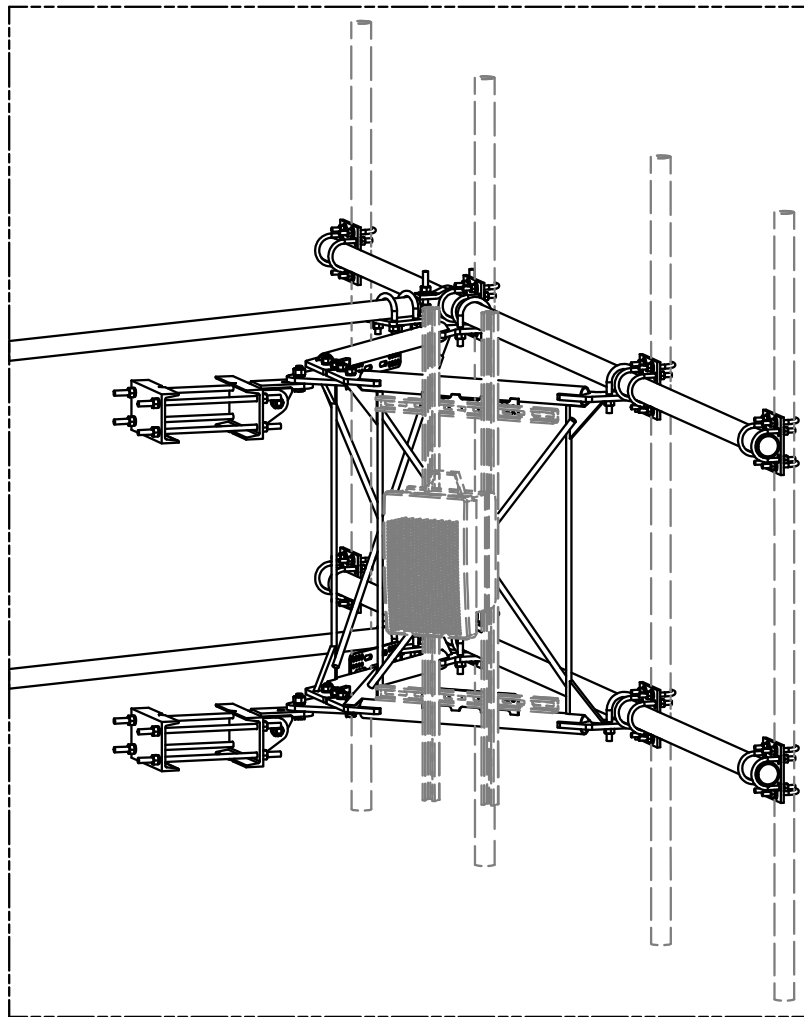
TOLERANCE NOTES

TOLERANCES ON DIMENSIONS, UNLESS OTHERWISE NOTED ARE:
 SAWED, SHEARED AND GAS CUT EDGES ($\pm 0.030"$)
 DRILLED AND GAS CUT HOLES ($\pm 0.030"$) - NO CONING OF HOLES
 LASER CUT EDGES AND HOLES ($\pm 0.010"$) - NO CONING OF HOLES
 BENDS ARE $\pm 1/2$ DEGREE
 ALL OTHER MACHINING ($\pm 0.030"$)
 ALL OTHER ASSEMBLY ($\pm 0.060"$)

PROPRIETARY NOTE:
 THE DATA AND TECHNIQUES CONTAINED IN THIS DRAWING ARE PROPRIETARY INFORMATION OF VALMONT INDUSTRIES AND CONSIDERED A TRADE SECRET. ANY USE OR DISCLOSURE WITHOUT THE CONSENT OF VALMONT INDUSTRIES IS STRICTLY PROHIBITED.

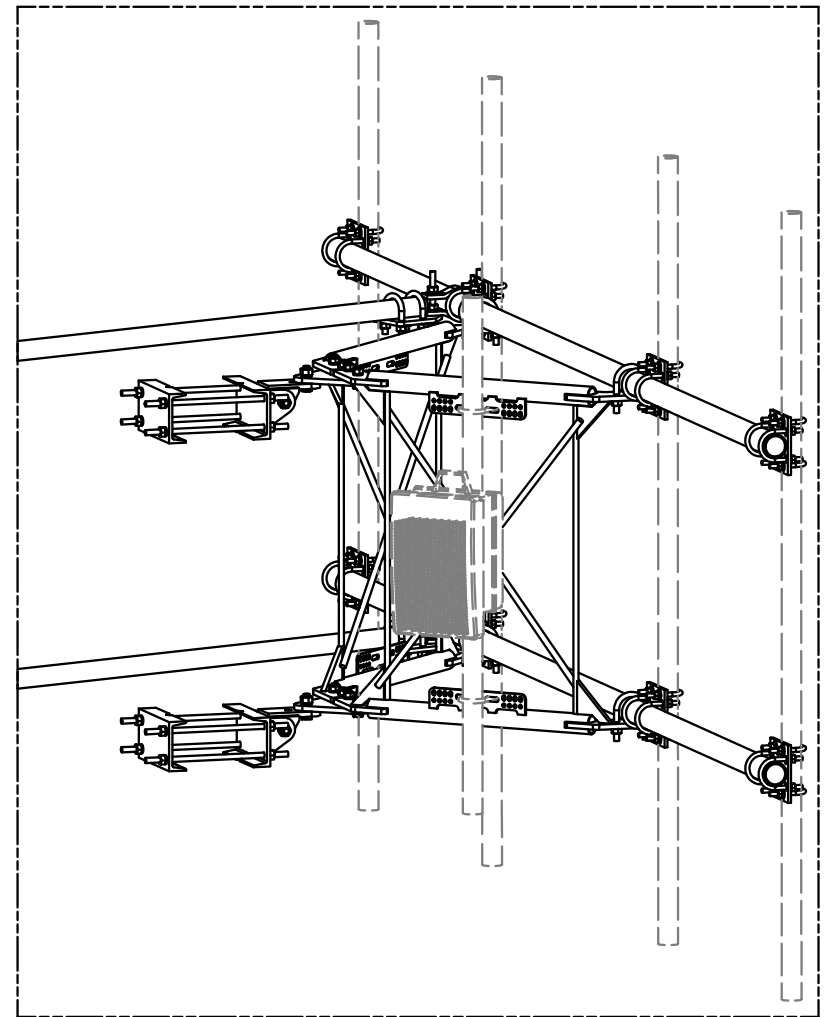
DESCRIPTION		DRAWING USAGE	
14' 6" HEAVY DUTY V-FRAME ASSEMBLY WITH TWO STIFF ARMS		CLASS	SUB
CPD NO.	DRAWN BY	81	02
	ENG. APPROVAL	DRAWING USAGE	
	CEK 1/25/2017	CUSTOMER	
	CHECKED BY	DRAWING USAGE	
	BMC 8/4/2017	CUSTOMER	

SITE PRO 1		Locations:	
Engineering Support Team: 1-888-753-7446		New York, NY Atlanta, GA Los Angeles, CA Plymouth, IN Salem, OR Dallas, TX	
A valmont COMPANY		PART NO.	VFA14-HD
		DWG. NO.	VFA14-HD



UNISTRUT AND HARDWARE
SOLD SEPARATELY.

REQUIRES 3/8" HARDWARE



EQUIPMENT PIPE AND HARDWARE
SOLD SEPARATELY.

REQUIRES 1/2" HARDWARE
AND 2-3/8" TO 4-1/2" O.D. PIPE

TOLERANCE NOTES

TOLERANCES ON DIMENSIONS, UNLESS OTHERWISE NOTED ARE:
 SAWED, SHEARED AND GAS CUT EDGES ($\pm 0.030"$)
 DRILLED AND GAS CUT HOLES ($\pm 0.030"$) - NO CONING OF HOLES
 LASER CUT EDGES AND HOLES ($\pm 0.010"$) - NO CONING OF HOLES
 BENDS ARE $\pm 1/2$ DEGREE
 ALL OTHER MACHINING ($\pm 0.030"$)
 ALL OTHER ASSEMBLY ($\pm 0.060"$)

PROPRIETARY NOTE:
 THE DATA AND TECHNIQUES CONTAINED IN THIS DRAWING ARE PROPRIETARY INFORMATION OF VALMONT
 INDUSTRIES AND CONSIDERED A TRADE SECRET. ANY USE OR DISCLOSURE WITHOUT THE CONSENT OF
 VALMONT INDUSTRIES IS STRICTLY PROHIBITED.

DESCRIPTION
 14' 6" HEAVY DUTY
 V-FRAME ASSEMBLY
 WITH TWO STIFF ARMS

SITE PRO 1
 A valmont COMPANY

Locations:
 New York, NY
 Atlanta, GA
 Los Angeles, CA
 Plymouth, IN
 Salem, OR
 Dallas, TX

Engineering
 Support Team:
 1-888-753-7446

REV	DESCRIPTION OF REVISIONS	CPD	BY	DATE
B	CHANGED TIE-BACK BACK CONNECTION		CEK	7/31/2017
A	CHANGED TIE-BACK FRONT CONNECTION		CEK	2/2/2017
REVISION HISTORY				

CPD NO.	DRAWN BY	ENG. APPROVAL
	CEK 1/25/2017	
CLASS	SUB	DRAWING USAGE
81	02	CUSTOMER
		CHECKED BY
		BMC 8/4/2017

PART NO.	DWG. NO.
VFA14-HD	VFA14-HD