

| PARTS LIST | | | | | | |
|------------|-----|-----------|--|------------|-------------|---------|
| ITEM | QTY | PART NO. | PART DESCRIPTION | LENGTH | UNIT WT. | NET WT. |
| 1 | 2 | X-VFASD | SUPPORT ARM FOR STANDARD DUTY V-FRAME ASSEMBLY | | 45.34 | 90.69 |
| 2 | 1 | X-SDTFLB | DIAGONAL SLOT WELDMENT FOR BCAM SD | | 15.08 | 15.08 |
| 3 | 1 | X-SDMHTP | MULTI-HOLE TAPER PLATE WELDMENT | | 16.63 | 16.63 |
| 4 | 2 | X-SDPP | PIVOT PLATE | 11 1/16 in | 9.09 | 18.18 |
| 5 | 2 | X-LCBP2 | BENT BACKING PLATE | 12 in | 8.86 | 17.73 |
| 6 | 1 | X-SDCAMSS | STRAIGHT SLOT WELDMENT FOR BCAM | | 8.48 | 8.48 |
| 7 | 2 | X-SPTB | SLIDING PIPE TIE BACK PLATE | 5 1/2 in | 5.87 | 11.74 |
| 8 | 1 | X-SDCAMSP | POSITIONING PLATE WELDMENT FOR BCAM | | 1.43 | 1.43 |
| 9 | 2 | X-TBCA | TIE BACK CLIP ANGLE | | 2.01 | 4.01 |
| 10 | 4 | SCX1 | CROSSOVER PLATE 2-3/8" X 2-3/8" | 6 in | 3.71 | 14.83 |
| 11 | 2 | MCP | CLAMP HALF 1/2" THICK, 11-5/8" LONG | 12 1/16 in | 3.59 | 7.19 |
| 12 | 4 | DCP | 1/2" THICK, 5-3/4" CNTER TO CENTER CLAMP HALF | 8 1/8 in | 2.36 | 9.45 |
| 13 | 2 | P284 | 2-3/8" X 84" SCH 40 GALVANIZED PIPE | 84 in | 26.91 | 53.82 |
| 14 | 1 | P2126 | 2-3/8" X 126" (2" SCH. 40) GALVANIZED PIPE | 126 in | 40.75 | 40.75 |
| 15 | 4 | A34214 | 3/4"-10 X 2-1/4" A325 BOLT | 2 1/4 in | 0.47 | 1.89 |
| 16 | 4 | G34FW | 3/4" HDG USS FLATWASHER | | 0.06 | 0.24 |
| 17 | 4 | G34LW | 3/4" HDG LOCKWASHER | | 0.04 | 0.17 |
| 18 | 4 | G34NUT | 3/4" HDG HEAVY 2H HEX NUT | | 0.21 | 0.85 |
| 19 | 2 | G58R-12 | 5/8" x 12" THREADED ROD (HDG.) | | 1.05 | 2.09 |
| 20 | 2 | G58R-8 | 5/8" x 8" THREADED ROD (HDG.) | | 0.70 | 1.39 |
| 21 | 4 | X-UB5258 | 5/8" X 2-5/8" X 4-1/2" X 2" U-BOLT (HDG.) | | 1.00 | 4.00 |
| 22 | 4 | G5804 | 5/8" x 4" HDG HEX BOLT GR5 | | 0.44 | 1.78 |
| 23 | 2 | G5802 | 5/8" x 2" HDG HEX BOLT GR5 | | 0.27 | 0.54 |
| 24 | 10 | G58FW | 5/8" HDG USS FLATWASHER | 1/8 in | 0.07 | 0.70 |
| 25 | 16 | G58LW | 5/8" HDG LOCKWASHER | | 0.03 | 0.42 |
| 26 | 18 | G58NUT | 5/8" HDG HEAVY 2H HEX NUT | | 0.13 | 2.34 |
| 27 | 8 | G12R-15 | 1/2" x 15" THREADED ROD (HDG.) | | 0.84 | 6.69 |
| 28 | 20 | X-UB1212 | 1/2" X 2-1/2" X 4-1/2" X 2" GALV. U-BOLT | | 0.66 | 13.25 |
| 29 | 2 | G12065 | 1/2" x 6-1/2" HDG HEX BOLT GR5 FULL THREAD | 5 1/2 in | 0.41 | 0.82 |
| 30 | 1 | G12045 | 1/2" x 4.5" HDG HEX BOLT GR5 FULL THREAD | 4 1/2 in | 0.30 | 0.30 |
| 31 | 8 | G1202 | 1/2" x 2" HDG HEX BOLT GR5 | 2 in | 0.18 | 1.41 |
| 32 | 53 | G12FW | 1/2" HDG USS FLATWASHER | 3/32 in | 0.03 | 1.81 |
| 33 | 66 | G12LW | 1/2" HDG LOCKWASHER | 1/8 in | 0.01 | 0.92 |
| 34 | 67 | G12NUT | 1/2" HDG HEAVY 2H HEX NUT | | 0.07 | 4.80 |
| | | | | | TOTAL WT. # | 347.01 |

TOLERANCE NOTES

TOLERANCES ON DIMENSIONS, UNLESS OTHERWISE NOTED ARE:
 SAWED, SHEARED AND GAS CUT EDGES ($\pm 0.030"$)
 DRILLED AND GAS CUT HOLES ($\pm 0.030"$) - NO CONING OF HOLES
 LASER CUT EDGES AND HOLES ($\pm 0.010"$) - NO CONING OF HOLES
 BENDS ARE $\pm 1/2$ DEGREE
 ALL OTHER MACHINING ($\pm 0.030"$)
 ALL OTHER ASSEMBLY ($\pm 0.060"$)

PROPRIETARY NOTE:
 THE DATA AND TECHNIQUES CONTAINED IN THIS DRAWING ARE PROPRIETARY INFORMATION OF VALMONT INDUSTRIES AND CONSIDERED A TRADE SECRET. ANY USE OR DISCLOSURE WITHOUT THE CONSENT OF VALMONT INDUSTRIES IS STRICTLY PROHIBITED.

DESCRIPTION
 6' STANDARD DUTY
 V-FRAME ASSEMBLY
 W/ 1 STIFF ARMS

SITE PRO 1
 Engineering Support Team:
 1-888-753-7446

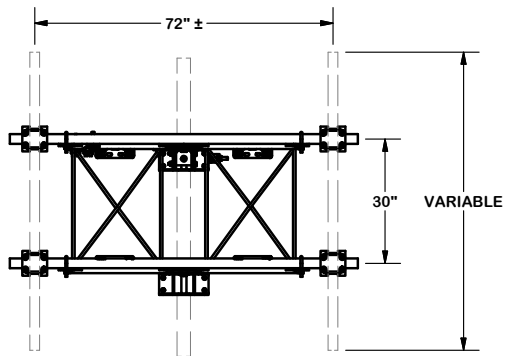
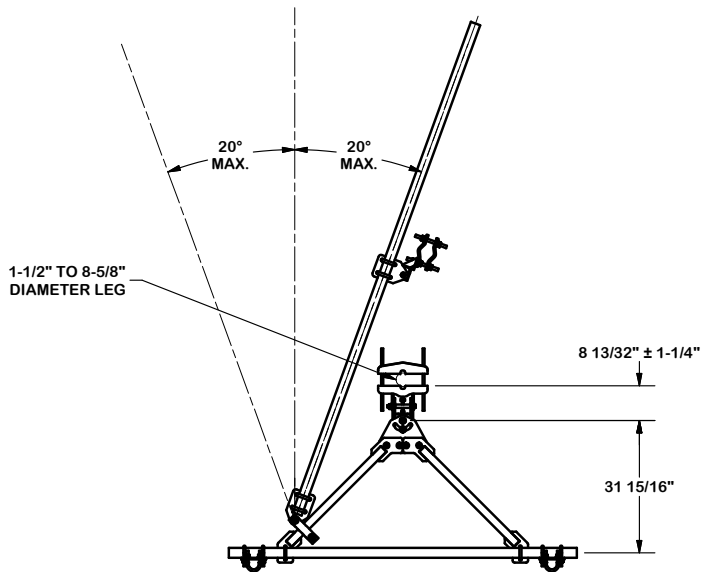
Locations:
 New York, NY
 Atlanta, GA
 Los Angeles, CA
 Plymouth, IN
 Salem, OR
 Dallas, TX

A valmont COMPANY

| REV | DESCRIPTION OF REVISIONS | CPD | BY | DATE |
|-----|--|-----|-----|-----------|
| A | UPDATED BCAM VERSION 1 TO BCAM VERSION 2 | | CEK | 8/17/2018 |

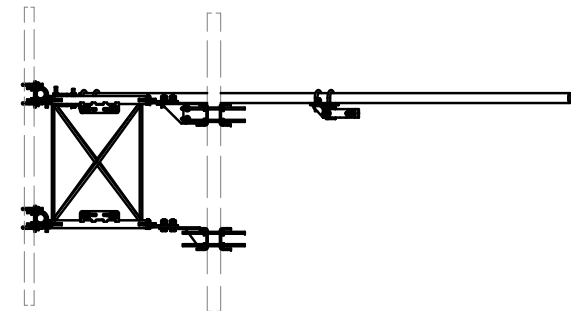
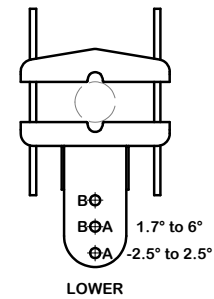
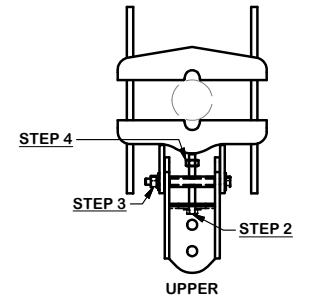
| CPD NO. | DRAWN BY | ENG. APPROVAL |
|------------|---------------|---------------|
| | CEK 6/20/2017 | |
| CLASS | SUB | DRAWING USAGE |
| 81 | 02 | CUSTOMER |
| CHECKED BY | DATE | |
| BMC | 7/13/2017 | |

| PART NO. | DWG. NO. |
|-----------|-----------|
| VFA6-SD-S | VFA6-SD-S |



ANGLE CALIBRATING PROCEDURE:

1. MEASURE TOWER TAPER AND PICK LOWER BRACKET HOLE:
 - HOLE A = -2.5° TO 2.5°
 - HOLE B = 1.7° TO 6°
2. USE CALIBRATING BOLT TO ADJUST FRAME TO DESIRED TAPER
3. TORQUE LOCKING BOLTS TO 50 ft.-lbs.
4. ADVANCE LOCKING NUT TO POSITIONING PLATE, THEN TIGHTEN.



TOLERANCE NOTES

TOLERANCES ON DIMENSIONS, UNLESS OTHERWISE NOTED ARE:
 SAWED, SHEARED AND GAS CUT EDGES (± 0.030 ")
 DRILLED AND GAS CUT HOLES (± 0.030 ") - NO CONING OF HOLES
 LASER CUT EDGES AND HOLES (± 0.010 ") - NO CONING OF HOLES
 BENDS ARE $\pm 1/2$ DEGREE
 ALL OTHER MACHINING (± 0.030 ")
 ALL OTHER ASSEMBLY (± 0.060 ")

PROPRIETARY NOTE:
 THE DATA AND TECHNIQUES CONTAINED IN THIS DRAWING ARE PROPRIETARY INFORMATION OF VALMONT INDUSTRIES AND CONSIDERED A TRADE SECRET. ANY USE OR DISCLOSURE WITHOUT THE CONSENT OF VALMONT INDUSTRIES IS STRICTLY PROHIBITED.

DESCRIPTION
 6' STANDARD DUTY
 V-FRAME ASSEMBLY
 W/ 1 STIFF ARMS

SITE PRO 1
 Engineering Support Team:
 1-888-753-7446

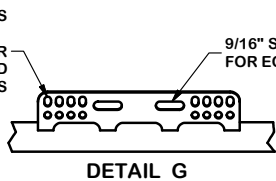
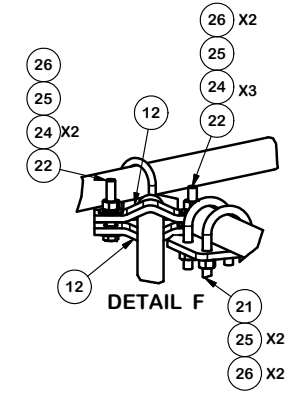
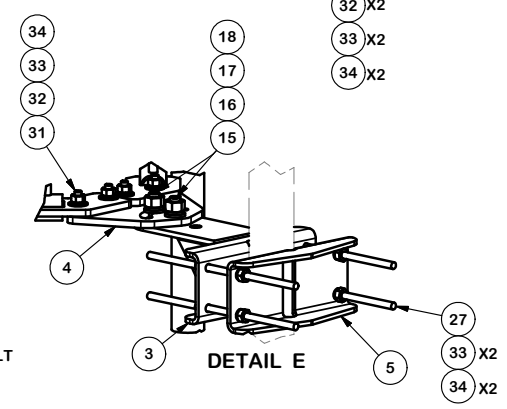
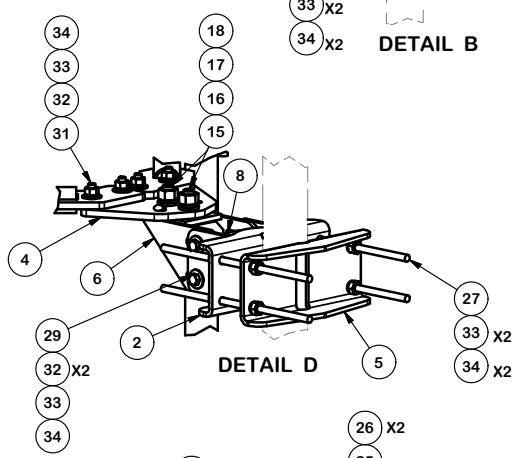
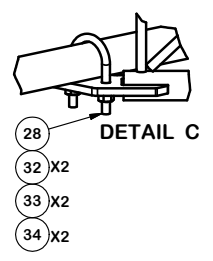
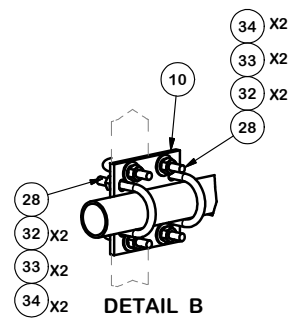
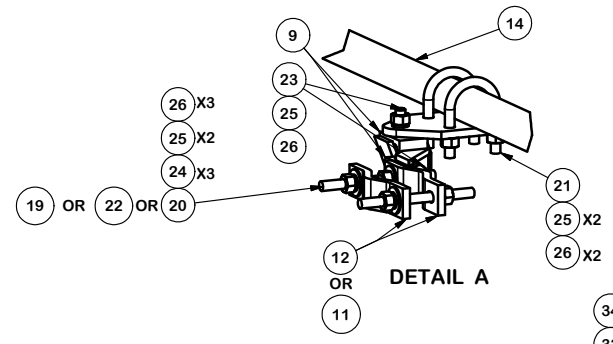
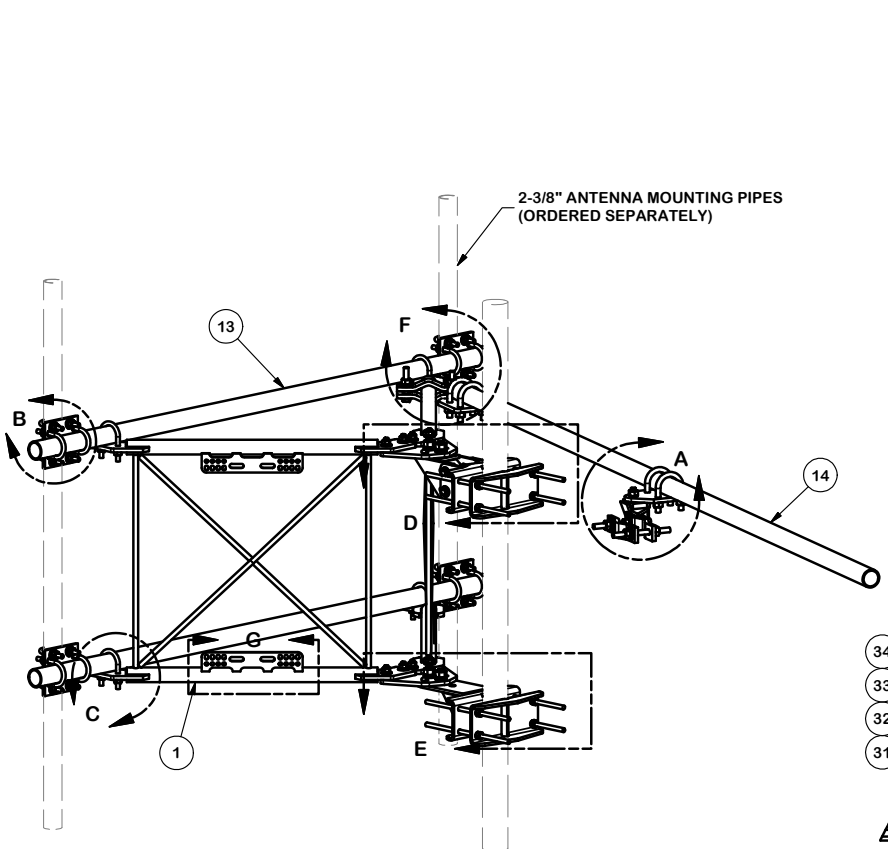
Locations:
 New York, NY
 Atlanta, GA
 Los Angeles, CA
 Plymouth, IN
 Salem, OR
 Dallas, TX

A valmont COMPANY

| REV | DESCRIPTION OF REVISIONS | CPD | BY | DATE |
|-----|--|-----|-----|-----------|
| A | UPDATED BCAM VERSION 1 TO BCAM VERSION 2 | | CEK | 8/17/2018 |

| CPD NO. | DRAWN BY | ENG. APPROVAL |
|---------|---------------|---------------|
| | CEK 6/20/2017 | |
| CLASS | SUB | DRAWING USAGE |
| 81 | 02 | CUSTOMER |

| PART NO. | DWG. NO. |
|-----------|-----------|
| VFA6-SD-S | VFA6-SD-S |



TOLERANCE NOTES

TOLERANCES ON DIMENSIONS, UNLESS OTHERWISE NOTED ARE:
 SAWED, SHEARED AND GAS CUT EDGES ($\pm 0.030"$)
 DRILLED AND GAS CUT HOLES ($\pm 0.030"$) - NO CONING OF HOLES
 LASER CUT EDGES AND HOLES ($\pm 0.010"$) - NO CONING OF HOLES
 BENDS ARE $\pm 1/2$ DEGREE
 ALL OTHER MACHINING ($\pm 0.030"$)
 ALL OTHER ASSEMBLY ($\pm 0.060"$)

PROPRIETARY NOTE:
 THE DATA AND TECHNIQUES CONTAINED IN THIS DRAWING ARE PROPRIETARY INFORMATION OF VALMONT INDUSTRIES AND CONSIDERED A TRADE SECRET. ANY USE OR DISCLOSURE WITHOUT THE CONSENT OF VALMONT INDUSTRIES IS STRICTLY PROHIBITED.

DESCRIPTION
 6' STANDARD DUTY
 V-FRAME ASSEMBLY
 W/ 1 STIFF ARMS

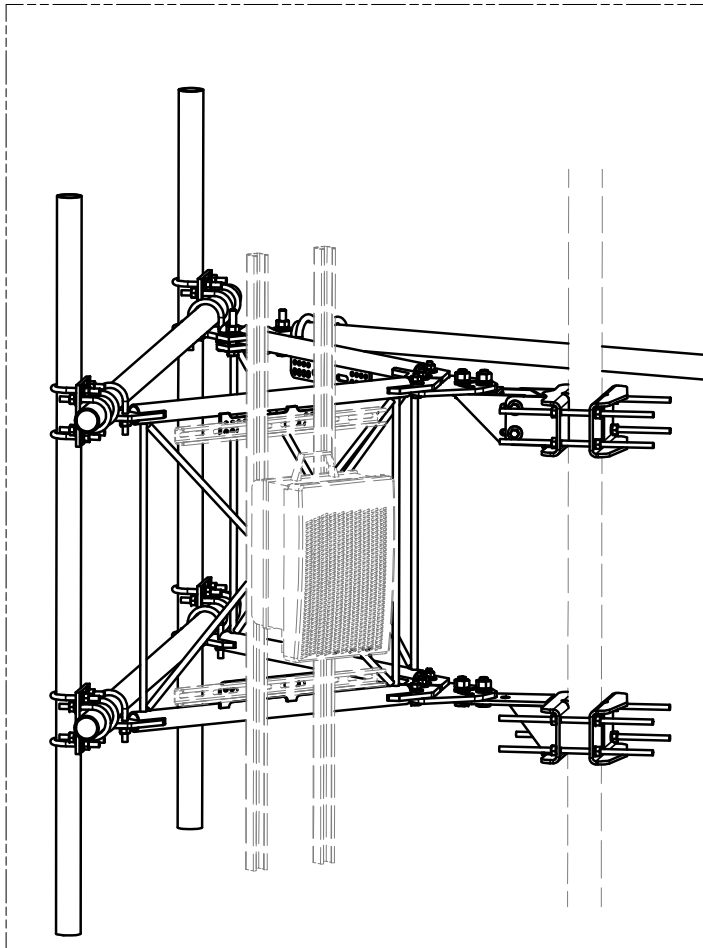
SITE PRO 1
 Engineering Support Team:
 1-888-753-7446

Locations:
 New York, NY
 Atlanta, GA
 Los Angeles, CA
 Plymouth, IN
 Salem, OR
 Dallas, TX

| | | | | |
|------------------|--|-----|-----|-----------|
| REV | DESCRIPTION OF REVISIONS | CPD | BY | DATE |
| A | UPDATED BCAM VERSION 1 TO BCAM VERSION 2 | | CEK | 8/17/2018 |
| REVISION HISTORY | | | | |

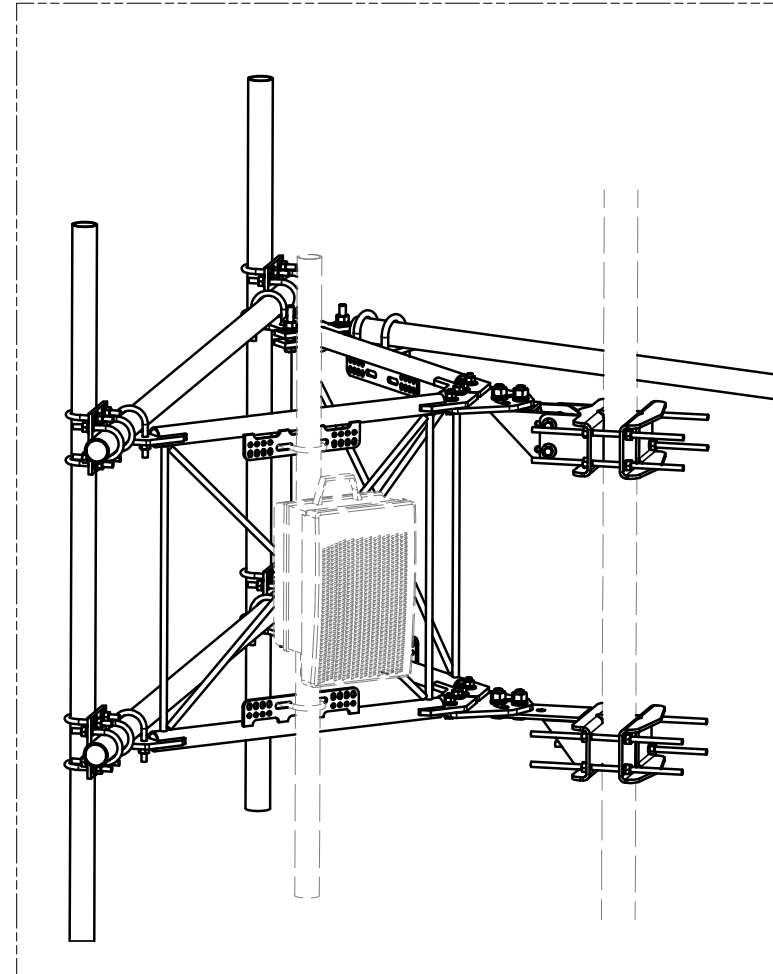
| | | |
|---------|---------------|---------------|
| CPD NO. | DRAWN BY | ENG. APPROVAL |
| | CEK 6/20/2017 | |
| CLASS | DRAWING USAGE | CHECKED BY |
| 81 | CUSTOMER | BMC 7/13/2017 |

| | |
|----------|-----------|
| PART NO. | VFA6-SD-S |
| DWG. NO. | VFA6-SD-S |



UNISTRUT AND HARDWARE
SOLD SEPARATELY.

REQUIRES 3/8" HARDWARE



EQUIPMENT PIPE AND HARDWARE
SOLD SEPARATELY.

REQUIRES 1/2" HARDWARE
AND 2-3/8" TO 4-1/2" O.D. PIPE

TOLERANCE NOTES

TOLERANCES ON DIMENSIONS, UNLESS OTHERWISE NOTED ARE:
 SAWED, SHEARED AND GAS CUT EDGES ($\pm 0.030"$)
 DRILLED AND GAS CUT HOLES ($\pm 0.030"$) - NO CONING OF HOLES
 LASER CUT EDGES AND HOLES ($\pm 0.010"$) - NO CONING OF HOLES
 BENDS ARE $\pm 1/2$ DEGREE
 ALL OTHER MACHINING ($\pm 0.030"$)
 ALL OTHER ASSEMBLY ($\pm 0.060"$)

PROPRIETARY NOTE:
 THE DATA AND TECHNIQUES CONTAINED IN THIS DRAWING ARE PROPRIETARY INFORMATION OF VALMONT
 INDUSTRIES AND CONSIDERED A TRADE SECRET. ANY USE OR DISCLOSURE WITHOUT THE CONSENT OF
 VALMONT INDUSTRIES IS STRICTLY PROHIBITED.

DESCRIPTION
 6' STANDARD DUTY
 V-FRAME ASSEMBLY
 W/ 1 STIFF ARMS

| | |
|---|---|
|  A valmont COMPANY | Locations: New York, NY Atlanta, GA Los Angeles, CA Plymouth, IN Salem, OR Dallas, TX |
| | Engineering Support Team: 1-888-753-7446 |

| REV | DESCRIPTION OF REVISIONS | CPD | BY | DATE |
|------------------|--|-----|-----|-----------|
| A | UPDATED BCAM VERSION 1 TO BCAM VERSION 2 | | CEK | 8/17/2018 |
| REVISION HISTORY | | | | |

| | | |
|---------|---------------|---------------|
| CPD NO. | DRAWN BY | ENG. APPROVAL |
| | CEK 6/20/2017 | |
| CLASS | DRAWING USAGE | CHECKED BY |
| 81 | CUSTOMER | BMC 7/13/2017 |

| | | |
|----------|-----------|--------|
| PART NO. | VFA6-SD-S | PAGE |
| DWG. NO. | VFA6-SD-S | 4 OF 4 |