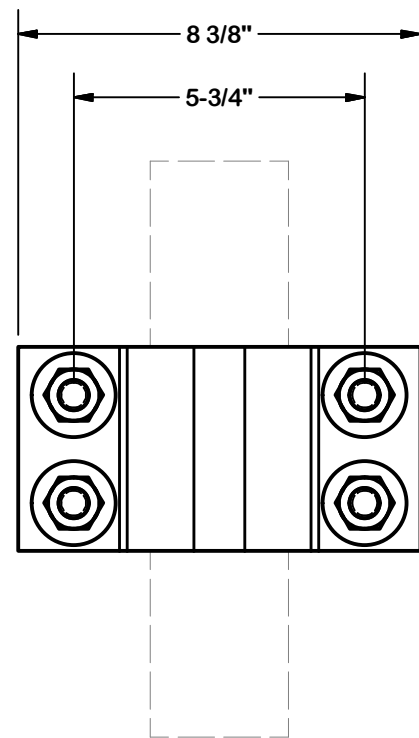
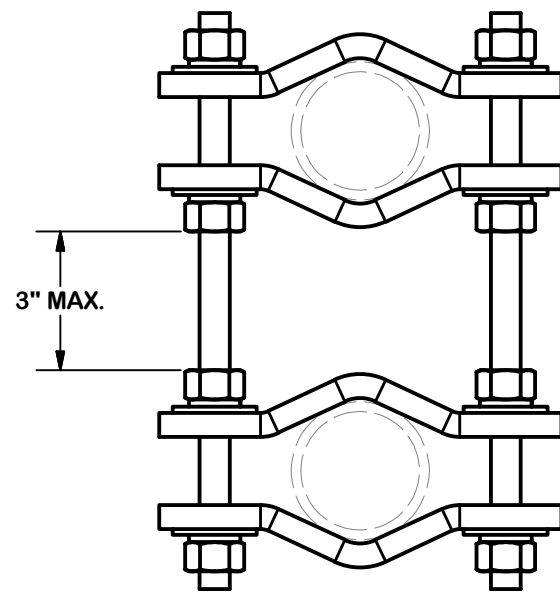
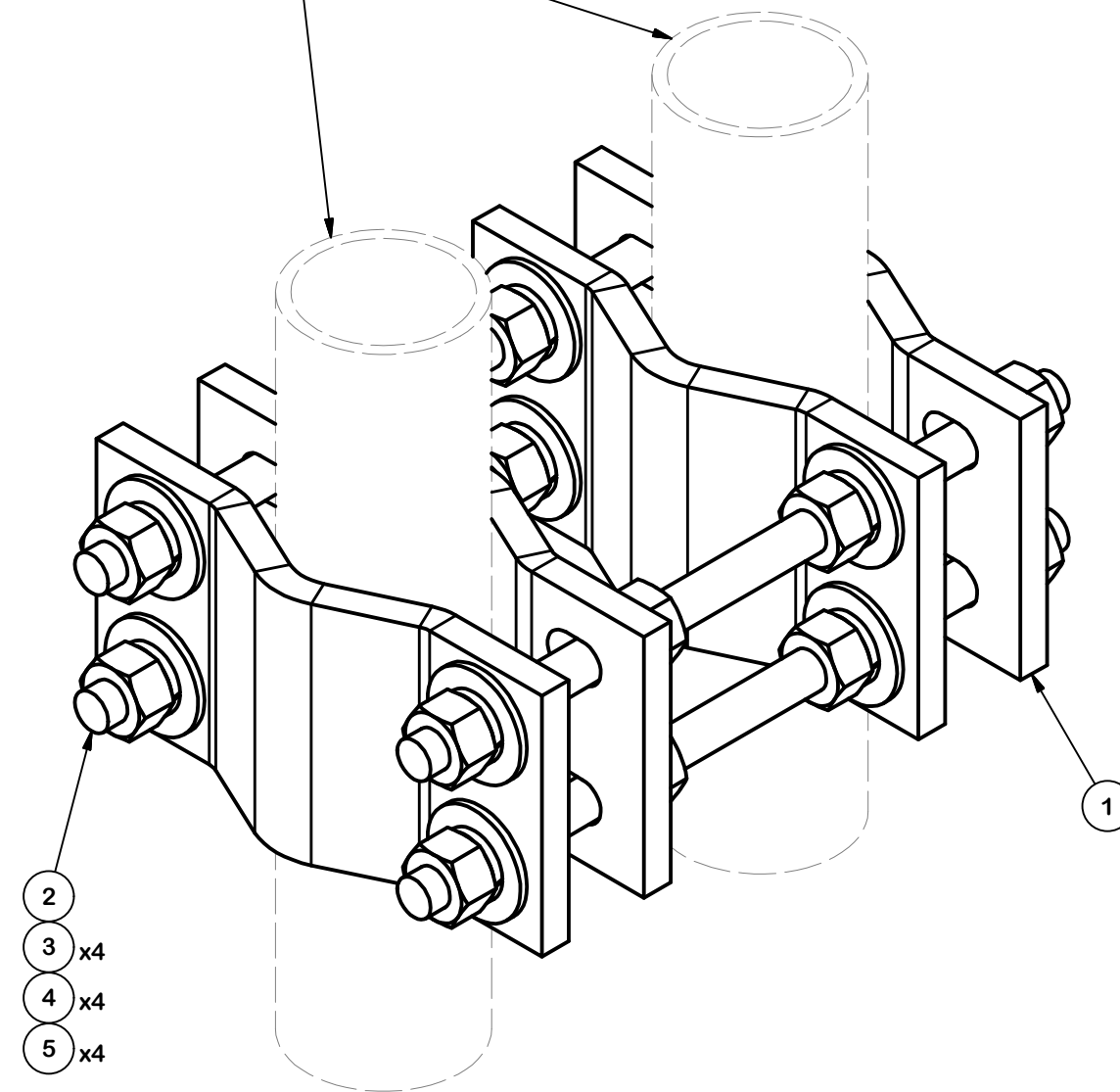


PARTS LIST						
ITEM	QTY	PART NO.	PART DESCRIPTION	LENGTH	UNIT WT.	NET WT.
1	4	V-CLAMP	1/2" MILL PLATE (A36/A709 GR. 36)	8 21/32 in	5.55	22.18
2	4	G58R-12	5/8" x 12" THREADED ROD (HDG.)		1.05	4.18
3	16	G58FW	5/8" HDG USS FLATWASHER		0.07	1.13
4	16	G58LW	5/8" HDG LOCKWASHER		0.03	0.42
5	16	G58NUT	5/8" HDG HEAVY 2H HEX NUT		0.13	2.08
					TOTAL WT. #	29.99



FITS 1-1/2" TO 3-1/2" OD PIPE
(ORDERED SEPARATELY)



Valmont Site Pro 1
Lori.Espinosa@valmont.com
(631) 715-3045
www.sitepro1.com

TOLERANCE NOTES

TOLERANCES ON DIMENSIONS, UNLESS OTHERWISE NOTED ARE:
 SAWED, SHEARED AND GAS CUT EDGES ($\pm 0.030"$)
 DRILLED AND GAS CUT HOLES ($\pm 0.030"$) - NO CONING OF HOLES
 LASER CUT EDGES AND HOLES ($\pm 0.010"$) - NO CONING OF HOLES
 BENDS ARE $\pm 1/2$ DEGREE
 ALL OTHER MACHINING ($\pm 0.030"$)
 ALL OTHER ASSEMBLY ($\pm 0.060"$)

PROPRIETARY NOTE:
 THE DATA AND TECHNIQUES CONTAINED IN THIS DRAWING ARE PROPRIETARY INFORMATION OF VALMONT INDUSTRIES AND CONSIDERED A TRADE SECRET. ANY USE OR DISCLOSURE WITHOUT THE CONSENT OF VALMONT INDUSTRIES IS STRICTLY PROHIBITED.

DESCRIPTION
PIPE TO PIPE CLAMPS

CPD NO.	DRAWN BY JFS 3/23/2020	ENG. APPROVAL 5/10/2020
CLASS 87	SUB 02	DRAWING USAGE SHOP
	CHECKED BY BMC 5/10/2020	

SITE PRO 1
 A valmont COMPANY

Engineering Support Team:
 1-888-753-7446

Locations:
 New York, NY
 Atlanta, GA
 Los Angeles, CA
 Plymouth, IN
 Salem, OR
 Dallas, TX

PART NO. VZWSMART-MSK3D	PAGE 1 OF 1
DWG. NO. VZWSMART-MSK3D	