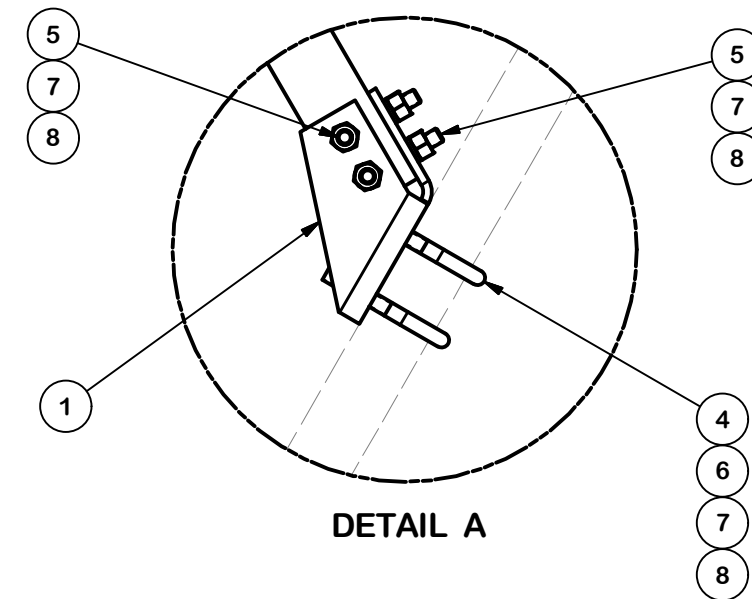
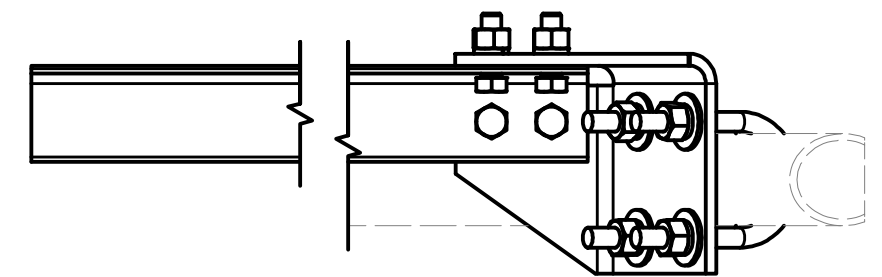


PARTS LIST						
ITEM	QTY	PART NO.	PART DESCRIPTION	LENGTH	UNIT WT.	NET WT.
1	3	CBP-L	CORNER BENT PLATE - LEFT	12 3/8 in	9.37	28.10
2	3	CBP-R	CORNER BENT PLATE - RIGHT	12 3/8 in	9.37	28.10
3	3	L3325-8	PLATFORM SUPPORT RAIL BRACE	96 in	41.74	125.23
4	12	X-UB5300	5/8" X 3" X 5-1/4" X 2-1/2" U-BOLT (HDG.)		1.15	13.79
5	24	A5802	5/8" x 2" HDG A325 HEX BOLT		0.27	6.52
6	24	G58FW	5/8" HDG USS FLATWASHER		0.07	1.69
7	48	G58LW	5/8" HDG LOCKWASHER		0.03	1.25
8	48	G58NUT	5/8" HDG HEAVY 2H HEX NUT		0.13	6.23
					TOTAL WT. #	210.92



DETAIL A



SECTION B-B

FIELD CUT AND DRILL TO FIT
AND THEN COLD GALVANIZE.

2-7/8" OD SUPPORT RAIL PIPE
(ORDERED SEPARATELY)

Valmont Site Pro 1
Lori.Espinosa@valmont.com
(631) 715-3045
www.sitepro1.com

TOLERANCE NOTES

TOLERANCES ON DIMENSIONS, UNLESS OTHERWISE NOTED ARE:
 SAWED, SHEARED AND GAS CUT EDGES ($\pm 0.030"$)
 DRILLED AND GAS CUT HOLES ($\pm 0.030"$) - NO CONING OF HOLES
 LASER CUT EDGES AND HOLES ($\pm 0.010"$) - NO CONING OF HOLES
 BENDS ARE $\pm 1/2$ DEGREE
 ALL OTHER MACHINING ($\pm 0.030"$)
 ALL OTHER ASSEMBLY ($\pm 0.060"$)

PROPRIETARY NOTE:
 THE DATA AND TECHNIQUES CONTAINED IN THIS DRAWING ARE PROPRIETARY INFORMATION OF VALMONT INDUSTRIES AND CONSIDERED A TRADE SECRET. ANY USE OR DISCLOSURE WITHOUT THE CONSENT OF VALMONT INDUSTRIES IS STRICTLY PROHIBITED.

DESCRIPTION
**PLATFORM SUPPORT RAIL BRACING
 (PIPE NOT INCLUDED)**

CPD NO.	DRAWN BY	ENG. APPROVAL
	JFS 3/18/2020	5/10/2020
CLASS	SUB	DRAWING USAGE
87	02	SHOP
	CHECKED BY	
	BMC 5/10/2020	

SITE PRO 1
 A valmont COMPANY

Engineering Support Team:
 1-888-753-7446

Locations:
 New York, NY
 Atlanta, GA
 Los Angeles, CA
 Plymouth, IN
 Salem, OR
 Dallas, TX

PART NO.	VZWSMART-PLK2
DWG. NO.	VZWSMART-PLK2