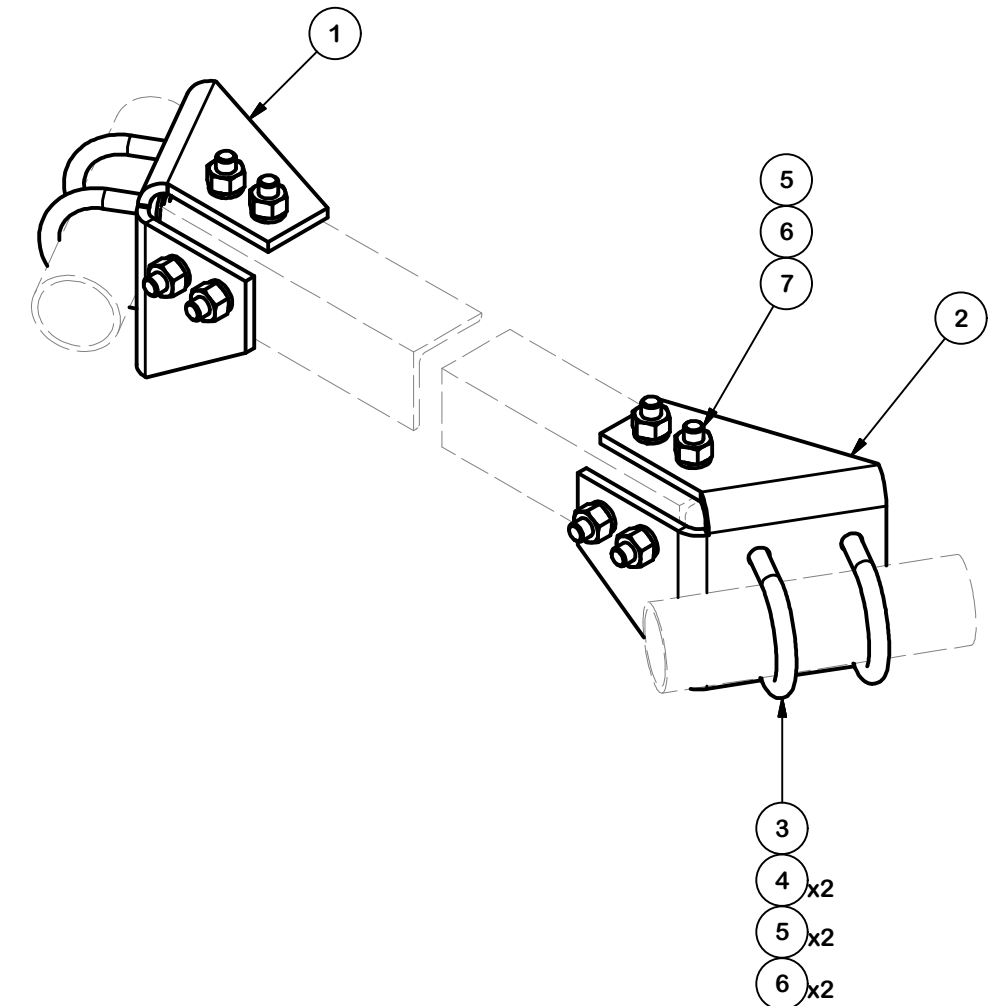
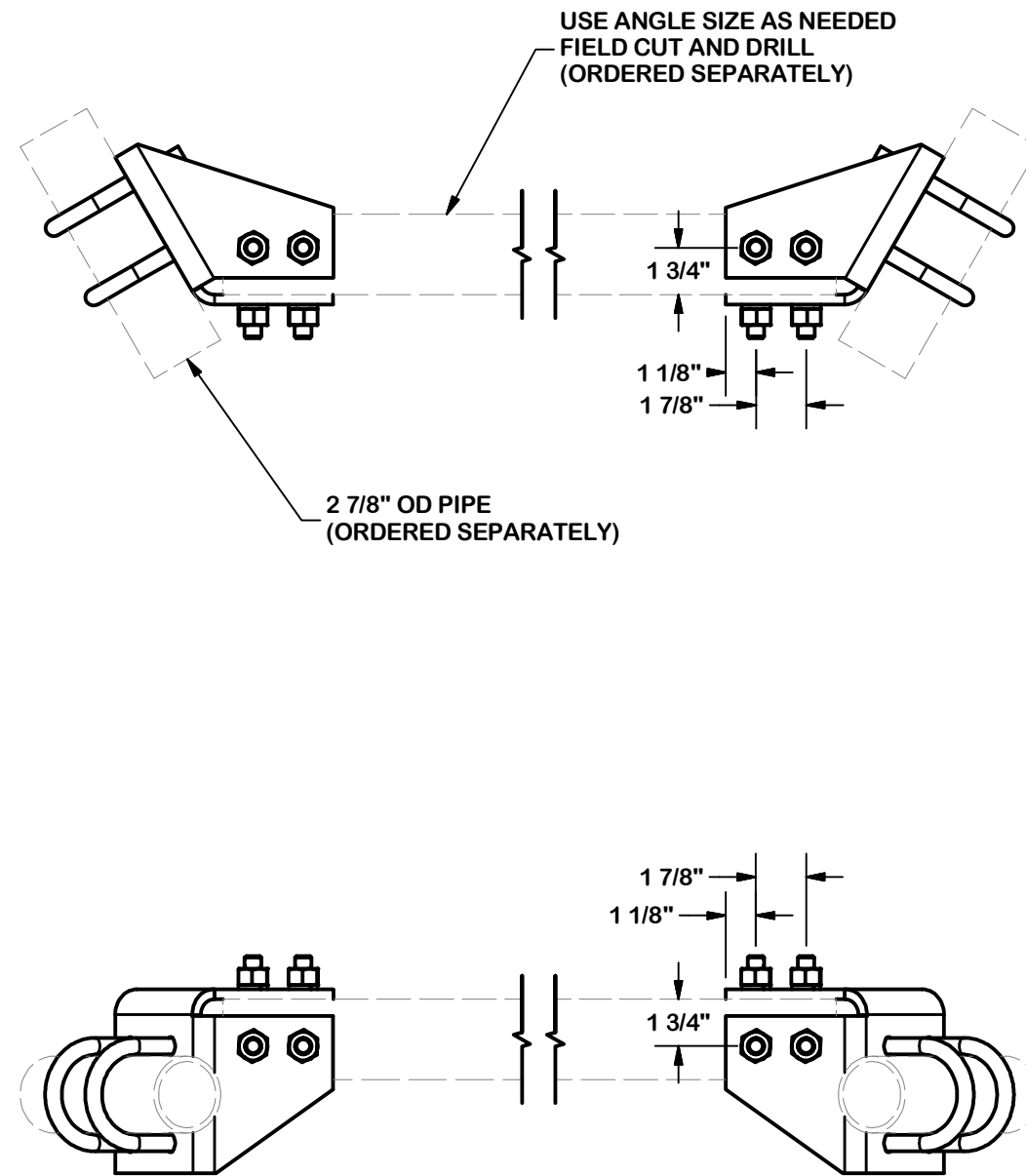


PARTS LIST						
ITEM	QTY	PART NO.	PART DESCRIPTION	LENGTH	UNIT WT.	NET WT.
1	1	CBP-L	CORNER BENT PLATE - LEFT	12 3/8 in	9.37	9.37
2	1	CBP-R	CORNER BENT PLATE - RIGHT	12 3/8 in	9.37	9.37
3	4	X-UB5300	5/8" X 3" X 5-1/4" X 2-1/2" U-BOLT (HDG.)		1.15	4.60
4	8	G58FW	5/8" HDG USS FLATWASHER		0.07	0.56
5	16	G58LW	5/8" HDG LOCKWASHER		0.03	0.42
6	16	G58NUT	5/8" HDG HEAVY 2H HEX NUT		0.13	2.08
7	8	A5802	5/8" x 2" HDG A325 HEX BOLT		0.27	2.17
					TOTAL WT. #	28.56



Valmont Site Pro 1
Lori.Espinosa@valmont.com
(631) 715-3045
www.sitepro1.com

TOLERANCE NOTES

TOLERANCES ON DIMENSIONS, UNLESS OTHERWISE NOTED ARE:
SAWED, SHEARED AND GAS CUT EDGES ($\pm 0.030"$)
DRILLED AND GAS CUT HOLES ($\pm 0.030"$) - NO CONING OF HOLES
LASER CUT EDGES AND HOLES ($\pm 0.010"$) - NO CONING OF HOLES
BENDS ARE $\pm 1/2$ DEGREE
ALL OTHER MACHINING ($\pm 0.030"$)
ALL OTHER ASSEMBLY ($\pm 0.060"$)

PROPRIETARY NOTE:
THE DATA AND TECHNIQUES CONTAINED IN THIS DRAWING ARE PROPRIETARY INFORMATION OF VALMONT INDUSTRIES AND CONSIDERED A TRADE SECRET. ANY USE OR DISCLOSURE WITHOUT THE CONSENT OF VALMONT INDUSTRIES IS STRICTLY PROHIBITED.

DESCRIPTION
SUPPORT RAIL CORNER BRACKETS
(ANGLE & PIPE NOT INCLUDED)

CPD NO.	DRAWN BY JFS 3/18/2020	ENG. APPROVAL 5/10/2020
CLASS 87	SUB 02	DRAWING USAGE SHOP
	CHECKED BY BMC 5/10/2020	



Locations:
New York, NY
Atlanta, GA
Los Angeles, CA
Plymouth, IN
Salem, OR
Dallas, TX

Engineering
Support Team:
1-888-753-7446

PART NO. VZWSMART-PLK3
DWG. NO. VZWSMART-PLK3