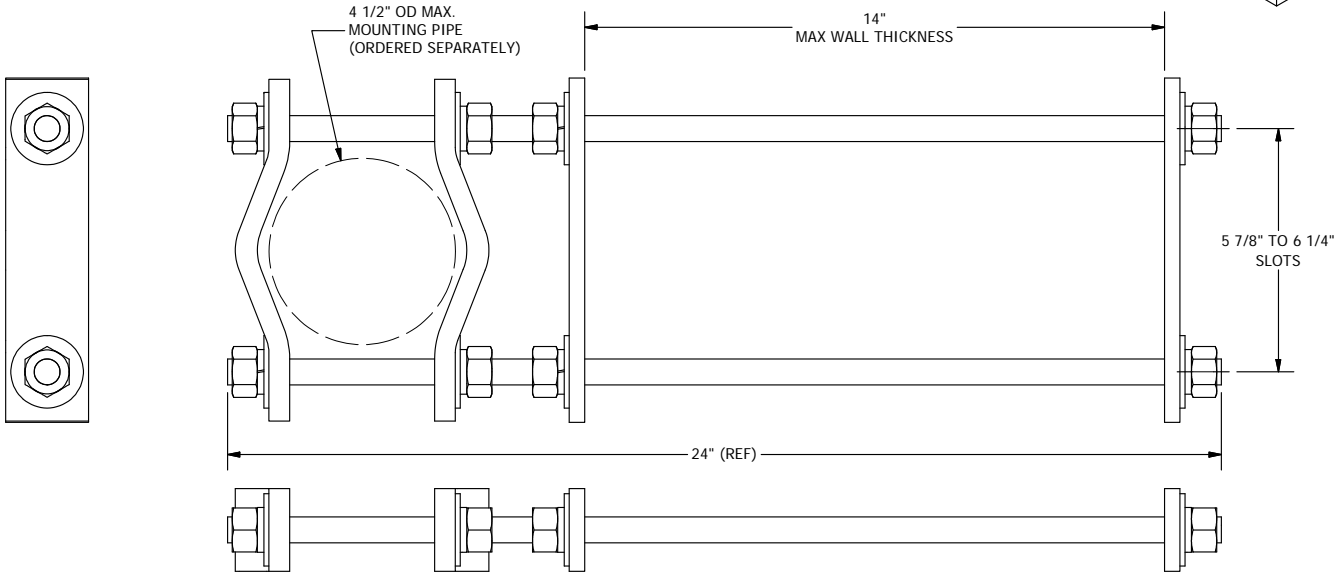
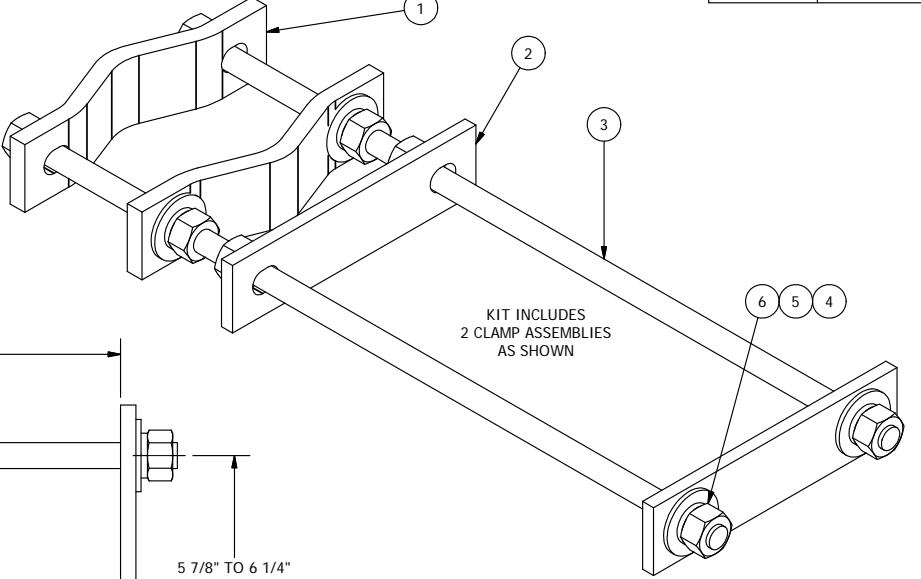


PARTS LIST						
ITEM	QTY	PART NO.	PART DESCRIPTION	LENGTH	UNIT WT.	NET WT.
1	4	DCP	CLAMP HALF		2.40	9.60
2	4	WM1665-P	PLATE	8 5/16 in	1.75	6.99
3	4	G58R-24	5/8" x 24" THREADED ROD (HDG.)	24 in	2.09	8.36
4	16	G58FW	5/8" HDG USS FLATWASHER		0.07	1.13
5	16	G58LW	5/8" HDG LOCKWASHER		0.03	0.42
6	16	G58NUT	5/8" HDG HEAVY 2H HEX NUT		0.13	2.08
TOTAL WT. #						28.58



**TOLERANCE NOTES**

**TOLERANCES ON DIMENSIONS, UNLESS OTHERWISE NOTED ARE:  
 SAWED, SHEARED AND GAS CUT EDGES ( $\pm 0.030$ " )  
 DRILLED AND GAS CUT HOLES ( $\pm 0.030$ " ) - NO CONING OF HOLES  
 LASER CUT EDGES AND HOLES ( $\pm 0.010$ " ) - NO CONING OF HOLES  
 BENDS ARE  $\pm 1/2$  DEGREE  
 ALL OTHER MACHINING ( $\pm 0.030$ " )  
 ALL OTHER ASSEMBLY ( $\pm 0.060$ " )**

PROPRIETARY NOTE:  
 THE DATA AND TECHNIQUES CONTAINED IN THIS DRAWING ARE PROPRIETARY INFORMATION OF VALMONT INDUSTRIES AND CONSIDERED A TRADE SECRET. ANY USE OR DISCLOSURE WITHOUT THE CONSENT OF VALMONT INDUSTRIES IS STRICTLY PROHIBITED.

DESCRIPTION  
**CLAMP SET WALL MOUNTS**

CPD NO.	DRAWN BY	ENG. APPROVAL
CLASS	DRAWING USAGE	CHECKED BY
81	01	CUSTOMER
		CEK 7/30/2012

**SITE PRO 1**  
 A valmont COMPANY  
 Locations:  
 New York, NY  
 Atlanta, GA  
 Los Angeles, CA  
 Plymouth, IN  
 Salem, OR  
 Dallas, TX  
 Engineering Support Team:  
 1-888-753-7446

PART NO.	<b>WM1665</b>
DWG. NO.	<b>WM1665</b>