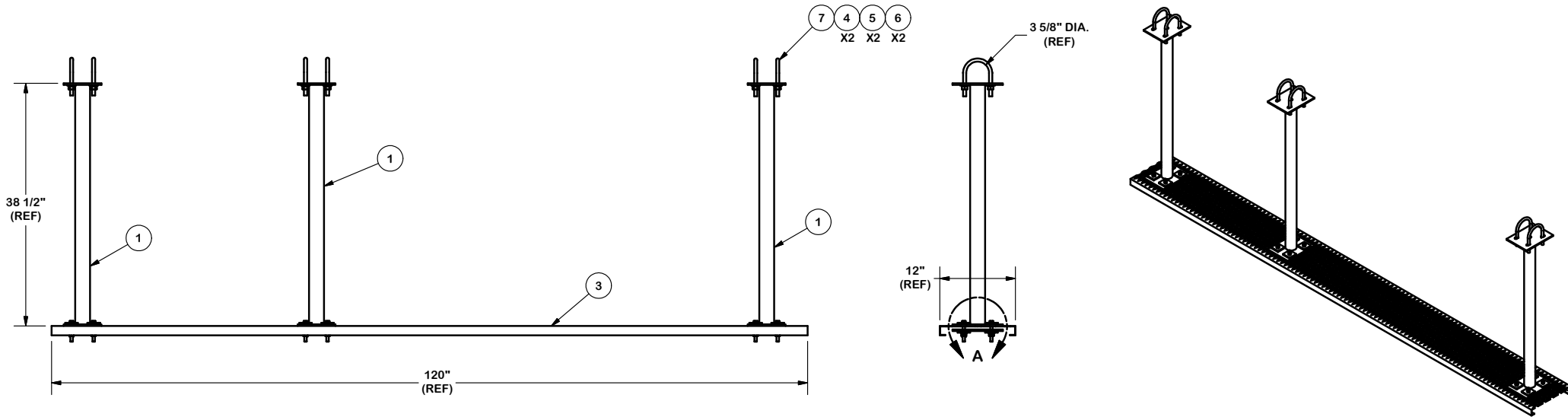


**DETAIL A**  
 3/8" X 3" BOLTS WITH BACKING PLATE  
 INSTALLED BENEATH GRIP STRUT  
 WITH SQUARE WASHERS ABOVE AND BELOW  
 THE BACKING PLATE AS SHOWN.

PARTS LIST						
ITEM	QTY	PART NO.	PART DESCRIPTION	LENGTH	UNIT WT.	NET WT.
1	3	WPBAR	HANGING BAR FOR WORK PLATFORMS		18.08	54.24
2	3	TPWP	TOP BOTTOM PLATE FOR WORK PLATFORM	8 in	3.24	9.72
3	1	GRS12-10	12" WIDE GRIP STRUT	120 in	24.40	24.40
4	12	G12NUT	1/2" HDG HEAVY 2H HEX NUT		0.07	0.86
5	12	G12LW	1/2" HDG LOCKWASHER		0.01	0.17
6	12	G12FW	1/2" HDG USS FLATWASHER		0.03	0.41
7	6	X-UB1358	1/2" X 3-5/8" X 5-1/2" X 3" U-BOLT (HDG.)		0.66	3.94
8	12	G3803	3/8" x 3" HDG HEX BOLT GR5	3 in	0.12	1.46
9	12	G38NUT	3/8" HDG HEAVY 2H HEX NUT		0.03	0.41
10	12	G38LW	3/8" HDG LOCKWASHER		0.01	0.08
11	12	G38FW	3/8" HDG USS FLATWASHER		0.01	0.14
12	24	SQW38	3/8" SQUARE WASHER (GALV.)	2 in	0.27	6.56
					<b>TOTAL WT. #</b>	<b>103.08</b>



FINISH:  
 HOT DIP GALVANIZED.

**TOLERANCE NOTES**

TOLERANCES ON DIMENSIONS, UNLESS OTHERWISE NOTED ARE:  
 SAWED, SHEARED AND GAS CUT EDGES ( $\pm 0.030"$ )  
 DRILLED AND GAS CUT HOLES ( $\pm 0.030"$ ) - NO CONING OF HOLES  
 LASER CUT EDGES AND HOLES ( $\pm 0.010"$ ) - NO CONING OF HOLES  
 BENDS ARE  $\pm 1/2$  DEGREE  
 ALL OTHER MACHINING ( $\pm 0.030"$ )  
 ALL OTHER ASSEMBLY ( $\pm 0.060"$ )

PROPRIETARY NOTE:  
 THE DATA AND TECHNIQUES CONTAINED IN THIS DRAWING ARE PROPRIETARY INFORMATION OF VALMONT INDUSTRIES AND CONSIDERED A TRADE SECRET. ANY USE OR DISCLOSURE WITHOUT THE CONSENT OF VALMONT INDUSTRIES IS STRICTLY PROHIBITED.

DESCRIPTION  
 10' WORK SUPPORT PLATFORM

CPD NO.	DRAWN BY	ENG. APPROVAL
CLASS	DRAWING USAGE	CHECKED BY
81	01	CUSTOMER
	8/8/2012	BMC 2/1/2013



Locations:  
 New York, NY  
 Atlanta, GA  
 Los Angeles, CA  
 Plymouth, IN  
 Salem, OR  
 Dallas, TX

Engineering  
 Support Team:  
 1-888-753-7446

PART NO.	WP197-10	PAGE
DWG. NO.	WP197-10	1 OF 1